

---

San Antonio College

---

# 1997-1998 FACTBOOK

---

Prepared by Institutional Research  
And Effectiveness

OCTOBER 1998

---

## SAC FACT BOOK CONTENTS

Introduction .....	v
Acknowledgements.....	vi
Contributions.....	vii
<b>COLLEGE PROFILE .....</b>	<b>1</b>
<b>OVERVIEW</b>	
History .....	2
Mission Statement.....	3
Outstanding Former Students .....	4
Certificate & Degree Programs by Degree Type.....	5
Accreditation and Associations.....	8
<b>ORGANIZATIONAL CHARTS</b>	
San Antonio College.....	9
Arts & Sciences; Occupational & Technical Education; Continuing Education & Workforce Development .....	10
Evening, Weekend & Distance Education; Student Services; Learning Resource Center.....	11
<b>DIVISIONS</b>	
Arts & Sciences .....	12
Occupational & Technical Education.....	12
Continuing Education and Workforce Development.....	12
Evening, Weekend & Distance Education.....	13
Student Services .....	13
Learning Resource Center .....	13
<b>INSTITUTIONAL RESOURCES</b>	
Instructional Innovation Center.....	14
Learning Resource Center .....	15
Student Learning Assistance Center.....	16
<b>TRANSFER</b>	
Tech Prep.....	18
Transfer Resource and Advisement Center .....	18
2 + 2 Agreements with Four-year Institutions .....	18
<b>STUDENT PROFILE .....</b>	<b>19</b>
<b>GENERAL INFORMATION</b>	
Gender, Ethnicity, Age, Major, Hours Enrolled Day vs. Evening.....	20
Top Ten:	
Academic Majors.....	21
Vocational Majors.....	21
Feeder High Schools .....	21
Zip Codes of Residence .....	22
Counties of Residence .....	22
States of Residence .....	22
Student Objective in Attending San Antonio College .....	23
Intended Duration of Enrollment.....	23
Previous College Experience .....	23
Student Employment Status.....	23
Financial Aid Awards.....	24

ACADEMIC ACHIEVEMENT

Grade Distribution, Fall 1997 ..... 25

Grade Distribution, Fall Semesters 1993-97 ..... 25

Fall to Fall Retention by Ethnicity, 1991-92 to 1996-97 ..... 26

Retention of First-Time, Full-Time Freshmen by Ethnicity, Fall 1996 ..... 26

Graduation Degrees & Certificates Awarded 1996-97 ..... 27

Graduation Degrees by Ethnicity 1996-97 ..... 27

Graduation Degrees & Certificates Awarded 1992-93 to 1996-97 ..... 27

TASP Results by Institution 1996-97 ..... 28

TASP Pass Rates by Ethnicity 1996-97 ..... 28

Comparison of ACT Norms By Subject 1996-97 ..... 28

Comparison of ACT Norms 1993-94 to 1997-98 ..... 29

ENROLLMENT TRENDS ..... 30

Credit Programs:

Fall Semesters 1988-1997 and Spring Semesters 1989-1998 ..... 31

Summer I & II Sessions 1989-1998 ..... 32

By Classification Fall Semesters 1993-1997 (Summary Statistics) ..... 33

By Gender ..... 34

By Ethnicity ..... 34

By Division ..... 35

Part-Time vs. Full-Time ..... 35

Day vs. Evening ..... 36

By Residency ..... 36

By Age ..... 37

First-Time Students ..... 37

Contact Hours, Fall & Spring 1993-94 to 1997-98 ..... 38

Contact Hours, Summer I & II 1994-98 ..... 38

Off-Campus Enrollment ..... 39

Developmental Education:

Enrollment Fall 1993-97 ..... 40

Trends in Developmental Reading ..... 41

Trends in Developmental English ..... 41

Trends in Developmental Math ..... 41

Continuing Education:

Highlights ..... 42

Contract Training ..... 43

Contracts ..... 44

Total Enrollment 1988-89 to 1997-98 ..... 45

Tuition/Fee Revenue 1988-89 to 1997-98 ..... 45

Reimbursable Headcount by Quarter 1993-97 ..... 46

Reimbursable Contact Hours by Quarter 1993-97 ..... 46

Reimbursable Classes by Quarter 1993-97 ..... 46

Student Satisfaction Survey ..... 47

**PERSONNEL PROFILE** ..... 49

**FACULTY**

        Faculty Profile (Gender, Ethnicity, Age, Highest Degree Earned), Fall 1997 ..... 50

        Full-Time Faculty, Fall 1997 ..... 51

        Faculty Rank, Fall 1997 ..... 51

**FULL-TIME EMPLOYEES**

        Full-Time Employee Profile, Fall 1997 ..... 52

        By Gender & Classification, Fall 1997 ..... 52

        By Ethnicity & Classification, Fall 1997 ..... 52

**FINANCIAL PROFILE** ..... 53

    Tuition and Fees 1997-98 ..... 54

    Revenues 1997-98 ..... 54

    Revenue Budget ..... 55

    Expenditure Budget ..... 55

## INTRODUCTION

The San Antonio College Fact Book provides general statistical information about the College which may be useful to those engaged in planning, preparing reports, writing grant proposals, or other endeavors within the College.

It is important for the reader to be aware that data presented in this publication may differ slightly from statistics found in other College and District reports. Such variances may result from differences in the source of information used, the date on which the report was generated, or the reporting period included in the report. For these reasons, the source of the information in each table and graph is cited. Trends should be tracked using identical sources each semester.

ACKNOWLEDGEMENTS

A special note of thanks is due John R. Deosdade, Instructor/Reference Librarian, San Antonio College, for his review and recommendations on the organization of this material and to the cited contributors for their valuable input and assistance. A special note of thanks is also due the staff at the Office of Institutional Research and Effectiveness and the Office of Academic Development for their assistance in formatting and proofing this document.

Emily Dibble, Ph.D., Manager  
Sonia V. Valdez, Statistical Research Specialist  
Institutional Research and Effectiveness  
San Antonio College  
1300 San Pedro Avenue  
San Antonio, Texas 78212  
(210) 733-2173

10/98

CONTRIBUTIONS

Dr. Vern Loland, President, San Antonio College  
Dr. Robert Zeigler, Executive Vice President, San Antonio College  
Adolph Lopez, Assistant to the President, Office of Business Services  
Dr. Margaret Hyde, Dean of Arts and Science  
Betty J. Larson, Dean of Occupational and Technical Education  
Ruben Torres, Dean of Continuing Education and Workforce Development  
Ruben Flores, Dean of Evening, Weekend and Distance Education  
Dean of Student Services  
Mary Ann DeArmond, Director of Academic Development Programs  
Dr. John Hammond, Director of Community and Public Relations  
Helen Torres, Director of Distance Education  
Dr. Charlotte Wolf, Director of Instructional Innovation Center  
Tomas Campos, Director of Student Financial Services  
Tim Rockey, Advisement/Recruitment Specialist, Continuing Education and Workforce Dev.  
Yolanda Cano, Associate Director of Residency and Reports  
Dave Elder, Coordinator of Student Learning Assistance Center  
Rosa Maria Gonzalez, Program Developer, Tittle III  
Della Savage, Records & Reports Technician  
Terri Smith, Records & Reports Technician  
Tillie A. Valdez, Graduation Specialist  
Espy Santos, Senior Secretary, Admissions and Records  
Sheila Fichtner, Website/Graphics Specialist, Audiovisual Center  
Diana Gomez, Media Technician III, Audiovisual Center  
Betty Munson, Programmer, ACCD Information Systems  
Thomas Currie, Production Control Analyst, ACCD Information Systems  
Carol Fuentes, Print Traffic Coordinator, ACCD Print Services  
Steve Castaneda, Program Director, Research, Community & Technical Colleges Division  
Texas Higher Education Coordinating Board  
Joe Vasquez, Institutional Research, Austin Community College

**CONTENTS – COLLEGE PROFILE**

OVERVIEW

- History ..... 2
- Mission Statement..... 3
- Outstanding Former Students ..... 4
- Certificate & Degree Programs by Degree Type ..... 5
- Accreditation and Associations..... 8

ORGANIZATIONAL CHARTS

- San Antonio College..... 9
- Arts & Sciences; Occupational & Technical Education; Continuing Education & Workforce Development ..... 10
- Evening, Weekend & Distance Education; Student Services; Learning Resource Center..... 11

DIVISIONS

- Arts & Sciences ..... 12
- Occupational & Technical Education..... 12
- Continuing Education and Workforce Development..... 12
- Evening, Weekend & Distance Education..... 13
- Student Services ..... 13
- Learning Resource Center ..... 13

INSTITUTIONAL RESOURCES

- Instructional Innovation Center..... 14
- Learning Resource Center ..... 15
- Student Learning Assistance Center..... 16

TRANSFER

- Tech Prep..... 18
- Transfer Resource and Advisement Center ..... 18
- 2 + 2 Agreements with Four-year Institutions ..... 18



## History

San Antonio College was established as University Junior College in September 1925, under the auspices of the University of Texas. The following year control of the college was transferred to the San Antonio Independent School District and the name was changed to San Antonio Junior College. Following passage of state legislation authorizing junior college districts, the San Antonio Union Junior College District was formed in 1945 and in 1946 assumed control of San Antonio Junior College and its sister college, St. Philip's Junior College. In 1948, San Antonio Junior College's name was changed to San Antonio College, and in 1951, the college was moved to its present location on San Pedro Avenue. Five hundred students were enrolled at that time. The Southern Association of Colleges and Schools granted accreditation to the college in 1955.

In the late 1960's, San Antonio College became a comprehensive community college by expanding offerings in occupational and technical courses and by assuming the San Antonio Independent School District's continuing education program. The name of the college district was changed to San Antonio Community College District in 1978; and in 1982 the district was renamed the Alamo Community College District.

In support of the mission of the Alamo Community College District, San Antonio College responds to its service area's diverse population by providing high quality general education, liberal arts and sciences, career education, continuing education and developmental education. The college has an average semester enrollment of 21,000 credit students and an average annual enrollment of 15,000 other-than-credit students. San Antonio College is the largest single-campus community college in Texas and one of the largest in the United States.

## Mission Statement

San Antonio College is a public community college which provides for and supports the educational and lifelong learning needs of a multicultural community. As a leader in education, San Antonio College is committed to excellence in helping students reach their full potential by developing their academic competencies, critical thinking skills, communication proficiency, civic responsibility and global awareness.

San Antonio College fulfills its mission by offering the following:

- ❖ Transfer education designed to provide students with the first two years of the bachelor's degree.
- ❖ General education courses in the liberal arts and sciences to support all college degree programs.
- ❖ Career preparation provided through a wide range of programs to prepare students for immediate employment.
- ❖ Developmental studies for students needing to bring their basic skills to a level appropriate for college work.
- ❖ Continuing education to offer a variety of training, licensure and professional programs.
- ❖ Academic support services that include a comprehensive learning resource center and basic skills activities that complement instruction.
- ❖ Student support services to provide assessment, advising, counseling, tutoring, financial assistance and social and cultural activities for all students, including those with special needs.
- ❖ Promotion of cross-cultural understanding and appreciation through instructional and social activities that contribute to cultural awareness and interaction.
- ❖ Involvement of business, industry, and professional groups in planning and revising educational programs to meet workforce needs.
- ❖ An environment conducive to learning through an attractive physical campus and wellness oriented programs and services.
- ❖ Continuous assessment of programs and services and the utilization of results for improvement.
- ❖ Operation of the college within available fiscal resources to provide accountability to taxpayers of the District.

## Outstanding Former Students

Congressman Henry B. Gonzalez.....	1982
Judge Blair Reeves.....	1983
Congressman Albert Bustamante.....	1984
Dr. William Kirby (Former Commissioner Of Education).....	1985
Capt. Larry Person (Navy Test Pilot, Former Blue Angels Commander).....	1986
Lisa Brown (Archaeologist).....	1987-88
Judge Edward Prado.....	1987-88
Dr. Jerome Weynand (Former Executive Director Baumberger Endowment Fund).....	1987-88
James R. Vasquez (Former Edgewood School District Superintendent).....	1988-89
Judge Sarah Garrahan.....	1988-89
Frank Gonzalez (Oceanographer).....	1989-90
Nancy Klepper (Educator).....	1989-90
Diane Gonzales (Journalist).....	1990-91
Bill Hayden (Founder/CEO Compuadd).....	1990-91
Jesse Trevino (Artist).....	1991-92
Patsy Torres (Entertainer).....	1992-93
Dr. Felix D. Almaraz (Columnist And Historian).....	1993-94
William Sinkin (Banker).....	1993-94
Dr. Judith Ann Loreda (Educator).....	1994-95
Steven C. Hilbig (Bexar County District Attorney).....	1994-95
Dr. Robert L. Jimenez (Psychiatrist).....	1995-96
Dr. Leo Sayavedra (Educator).....	1995-96
Francis R. Scobee (Challenger Astronaut).....	1995-96
Tino Duran (Publisher).....	1996-97
Al A. Philippus (San Antonio Chief Of Police).....	1996-97
Dr. Cynthia Gambell Broderick (Educator).....	1997-98
Dr. Jesse T. Zapata (Educator).....	1997-98

**Certificate and Degree Programs****ARTS & SCIENCE**

DEGREES:           ASSOCIATE IN ARTS  
                          ASSOCIATE IN SCIENCE

DISCIPLINES:      Biological Sciences  
                          Business Administration  
                          Chemistry  
                          Child Development  
                          Earth Sciences  
                          Economics  
                          English  
                          Foreign Language  
                          Government  
                          History  
                          Journalism  
                          Photography  
                          Math  
                          Computer Science  
                          Music  
                          Humanities  
                          Philosophy  
                          Kinesiology/Physical Education  
                          Physics  
                          Engineering  
                          Architecture  
                          Psychology  
                          Radio-Television-Film  
                          Reading  
                          Education  
                          Sociology  
                          Theatre  
                          Communications  
                          Visual Arts and Technology

## Certificate and Degree Programs

### OCCUPATIONAL TECHNICAL

DEPARTMENT	PROGRAM	AWARD
ALLIED HEALTH	Dental Assisting Technology	AAS, CERT
	Medical Assisting	AAS, CERT
	Medical Assisting Technology	AAS, CERT
	Medical Office Adm. Assistant	CERT
	Mortuary Science	AAS
CHILD DEVELOPMENT	Child Development	AAS, CERT
	Teacher Assistant	CERT
COMPUTER INFORMATION SYSTEMS TECHNOLOGY	Accounting Technology	AAS, CERT
	Computer Help Desk Specialist	AAS
	Computer Help Desk Technician	CERT
	Computer Information System	AAS
	Computer Programming	AAS
	Computer Programmer	CERT
	Court Reporting	CERT
	Court Reporting Computer-Aided Transcription	AAS
	Court Reporting – Rapid Text Entry	CERT
	Information Systems Support (Help Desk)	CERT
	Microcomputer/Data Entry Operers.	CERT
	Microcomputer Specialist	AAS
	Network Administrator	AAS
	Network Operator	CERT
	Office Assistant	CERT
	Office Sys. Specialist	AAS
	Office Systems Technician	CERT
Office System Technology	AAS, CERT	
Records Management	AAS, CERT	
ENGINEERING TECHNOLOGY	Civil Engineering	AAS
	Computer-Aided Drafting Operations	CERT
	Computer-Aided Drafting & Design	CERT
	Drafting	AAS
	Drafting-Engineering Technology	AAS
	Electronics	AAS, CEAASRT
	Electronic Technology	AAS, CERT
	Electronics Tech-Communications	AAS
	Electronics Tech-Computer	AAS
	Engineering Technology	AAS
Facilities Management	AAS	

DEPARTMENT	PROGRAM	AWARD
	Geographic Info Systems	CERT
	Safety Engineering Tech	AAS
	Surveying	AAS, CERT
INTERPRETER TRAINING/AMERICAN SIGN LANGUAGE	Interpreting for the Deaf	AAS
MANAGEMENT	Banking	AAS
	Financial Management	AAS, CERT
	Labor Studies	CERT
	Legal Assisting	AAS
	Management	AAS, CERT
	Operations Management	AAS, CERT
	Public Administration	AAS
	Real Estate Management	AAS, CERT
	Small Business	CERT
RADIO-TV-FILM		AAS
NURSING		AAS
PROTECTIVE SERVICES	Criminal Justice-Correctional Science	AAS, CERT
	Criminal Justice-Law Enforcement	AAS, CERT
	Fire Fighter (Basic)	CERT
	Fire Science	AAS
	Fire and Arson Investigation	AAS, CERT
	Fire Inspector	CERT
PSYCHOLOGY	Mental Health Technology	AAS, CERT
	Mental Health Technology-Substance Abuse	AAS
	Drug & Alcohol Couns. Cert. Prep.	CERT
VISUAL ARTS	Graphic Arts-Electronic Graphics Option	AAS
	Graphic Arts-Print Graphics Option	AAS

**Accreditation & Memberships**

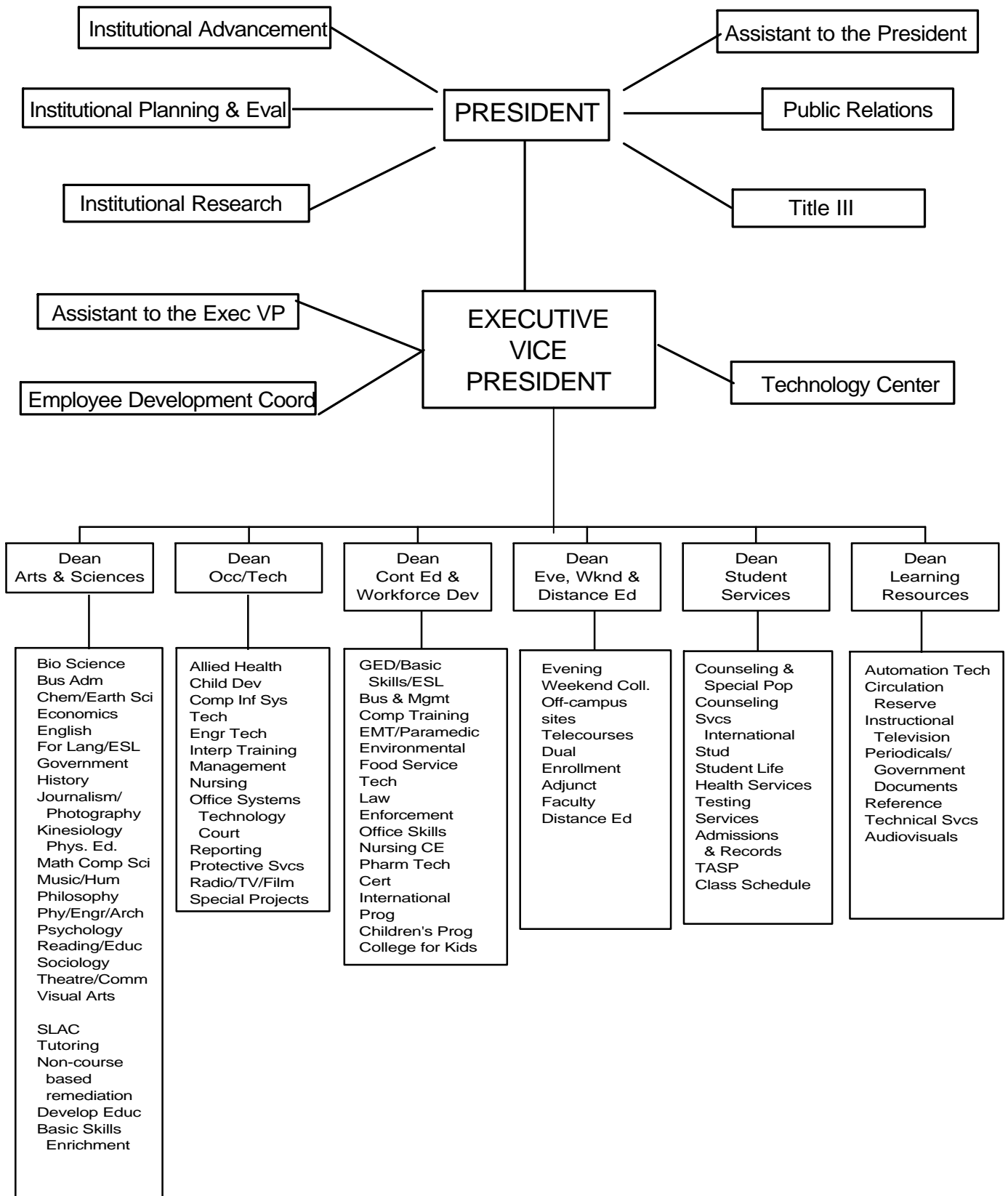
## Approved and Accredited by:

The Southern Association of Colleges and Schools  
The Association of Texas Colleges and Universities  
Texas Educational Theatre Association  
Texas Association of Music Schools  
National League for Nursing  
Board of Nurse Examiners for the State of Texas  
American Board of Funeral Service Education  
Community College Journalism Association  
Commission on The Accreditation for Allied Health Programs  
Commission on Dental Accreditation of the American Dental Association

## Member:

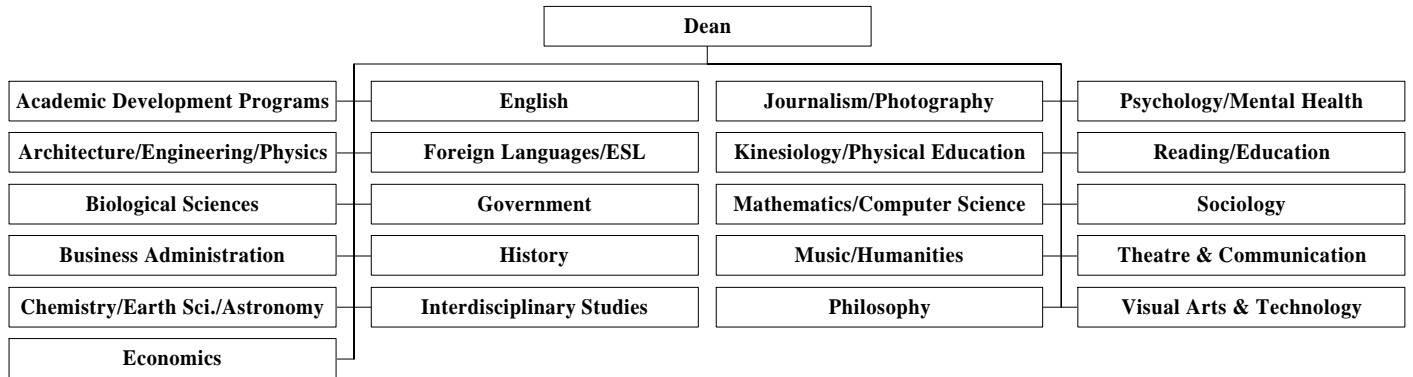
American Association of Community Colleges  
Southern Association of Junior Colleges  
Service Member Opportunity College

SAN ANTONIO COLLEGE 1997-98 ORGANIZATIONAL CHART

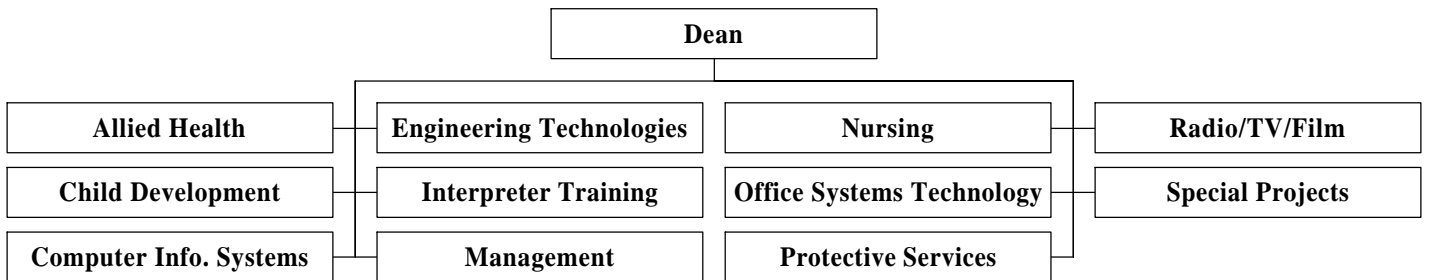




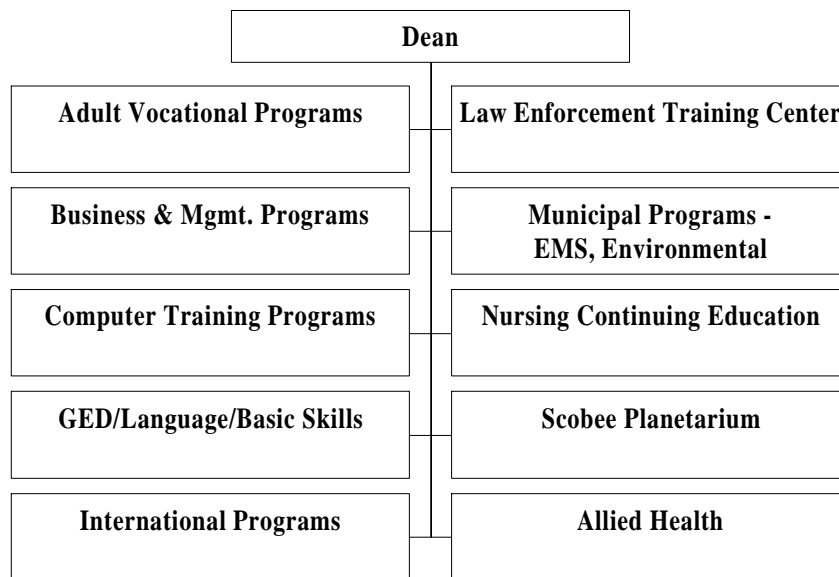
### ARTS & SCIENCES DIVISION



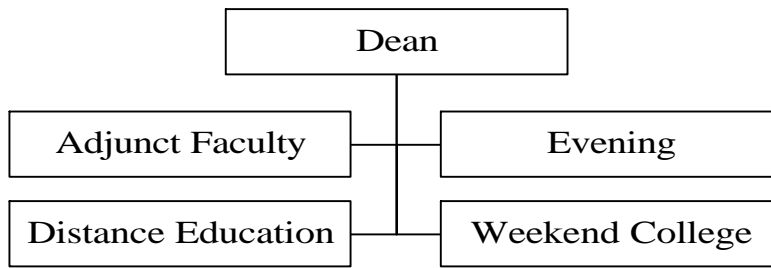
### OCCUPATIONAL & TECHNICAL EDUCATION



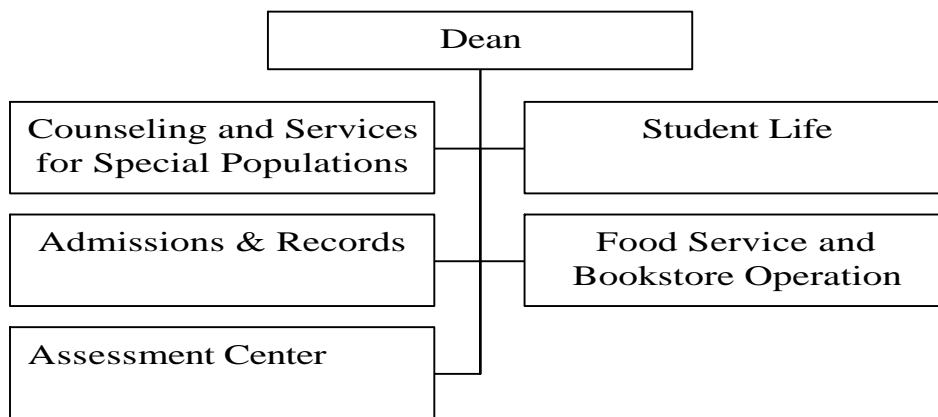
### CONTINUING EDUCATION AND WORKFORCE DEVELOPMENT



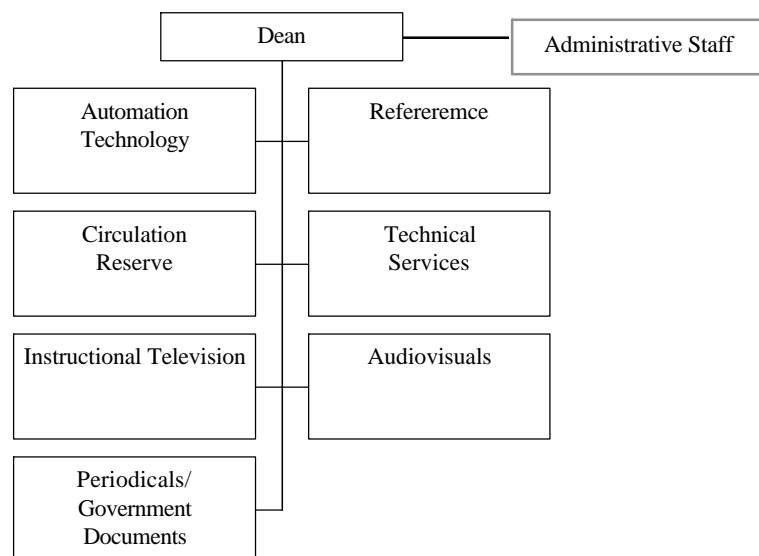
### EVENING, WEEKEND & DISTANCE EDUCATION



### STUDENT SERVICES



### LEARNING RESOURCE CENTER



## Divisions

### Arts and Sciences

San Antonio College offers a comprehensive Liberal Arts Curriculum designed to satisfy the requirements of the first two years of a baccalaureate degree. These general and transfer Arts and Science courses are offered by the following areas: Biological Sciences, Business Administration, Chemistry, Child Development, Earth Sciences, Economics, English, Foreign Language, Government, History, Journalism, Photography, Math, Computer Science, Music, Humanities, Philosophy, Physical Education, Physics, Engineering, Architecture, Psychology, Radio-Television-Film, Reading, Education, Sociology, Theatre, Communications, and Visual Arts and Technology.

### Occupational and Technical Education

Programs are provided for purposes of job or career entry; career development and change; industry/business start-up and development; transfer to four-year degree programs; and technical services to industry. All of the programs are linked with the employing community through active advisory committees, cooperative or part-time work experience, direct placement and career development activities, as well as the sharing of work-site laboratories and equipment.

San Antonio College offers local certificates, level one certificates, advanced certificates and Associate in Applied Science degrees in Accounting Technology, Banking, Court Reporting, Child Development, Child Care Administration, Computer-Aided Transcription, Computer Help Desk Specialist, Computer Programming, Criminal Justice, Electronics, Dental Assisting Technology, Drafting and Design Technology, Engineering Technology, Financial Management, Fire Science, Graphic Arts, Interpreting for the Deaf, Legal Assisting Technology, Labor Studies, Management, Medical Assisting Technology, Mental Health Technology, Microcomputer Data Entry, Microcomputer Specialist, Mortuary Science, Network Administrator, Nursing, Office Systems Specialist, Operations Management, Public Administration, Radio-Television-Film Technology, Real Estate Management, Records Management, Safety Engineering Technology, Teacher Assistant, Facilities Management, Geographic Information Systems and Surveying.

### Continuing Education and Workforce Development

Continuing Education provides nontraditional educational opportunities to meet the needs of students and employers in the San Antonio area.

Occupational and technical short courses are offered for business, industry, government and professional groups; seminars and workshops are developed to complement and supplement in-house training and staff development programs. These non-traditional courses are developed in collaboration with college faculty and community experts. Other-than-credit courses and activities are offered on campus and throughout the community with dates and times arranged for the convenience of the students. Continuing Education assists department and divisions by serving as an outreach mechanism for channeling interested students into appropriate credit programs within the college.

Certification programs are offered for managers, secretaries, law enforcement officers, private security guards, emergency medical technicians, firefighters, real estate agents, insurance agents, executive housekeepers and health care personnel. Community service programs include conversational languages, personal development and life skills courses, summer courses for children and planetarium programs for the general public. Parallel and integrated programs include classes in General Education Development (GED) and English as a Second Language skills.

The International Students Office (ISO) serves primarily as official liaison between San Antonio College and the U. S. Immigration and Naturalization Service (INS) for approximately 230 students from 50 countries in Central and South America, Europe, Africa, the Middle East, Asia and South East Asia. The ISO assists prospective international students with applications for admission, registration, medical insurance, etc. Enrolled students are helped to take advantage of INS benefits while maintaining their legal status from the point of College admission to the point of transfer to another institution or return to their home country. This unit is dedicated to helping our international students succeed while enrolled at San Antonio College. Every effort is made to ensure the students return home with memories of a pleasant American experience.

## Evening, Weekend and Distance Education

Evening course offerings include regular academic courses leading to college degrees and certificate programs, developmental education courses, and other courses planned to be of community service and vocational interest to adults. Courses are offered if there is sufficient demand. Late afternoon, evening, weekend classes and distance education classes (off-campus courses and telecourse/internet/interactive courses) are scheduled for the convenience of students.

### Distance Education

The Distance Education Office at San Antonio College provides information on course offerings, assessment and off-campus registration to students interested in taking college credit courses or developmental education courses off-campus. Distance Education offers SAC courses in area high schools, military bases, USAA, Citicorp, and the cities of Seguin, New Braunfels and Kerrville.

Dual Credit courses are courses where high school juniors and seniors earn high school and college credit. School districts enter into cooperative agreements with San Antonio College before dual credit classes are offered at a high school. Distance Education also provides course and schedule information on telecourses and Internet courses.

## Student Services

Student Support Services are provided by Admissions and Records, Counseling, Health Services, Student Activities, the Planetarium, Extramurals, Intramurals, Women's Center, Disabled Student Services, Veterans Affairs, Tutoring Services, Financial Aid, Special Services, Student Support Services Project, Job Placement and Follow-Up, Assessment Services, Foreign Student Services, Day Care Services and a Student Development Program. A comprehensive learning Resources Center enhances efforts to ensure quality instruction. A Wellness Program with emphasis on a lifestyle integrating body, mind, and spirit is available to balance the additional support services.

## Learning Resource Center

The Learning Resource Center is a vital technologically advanced center of learning and exploration for students, staff, faculty and the community. Supplementing the book collection of 200,000 titles are 60,000 federal documents, 1,000 current periodical subscriptions, 65,000 microforms, 5,000 pamphlets, and 3,500 videotapes.

Informational resources owned by the library are listed in an online catalog. Additional resources are accessible through the Internet/World Wide Web. Subject databases, such as Cumulative Index to Nursing (CINAHL), are featured on a Local Area Network (LAN).

## Institutional Resources

### Instructional Innovation Center

The Instructional Innovation Center provides faculty training and development opportunities for faculty who want to enhance their instruction with new or innovative teaching techniques and technology. The Center provides a place for faculty to work with state-of-the-art software. Assistance and training are available for innovations such as classroom presentations using computers and multimedia, computer-assisted instruction, infusion of the Internet and the World Wide Web into classroom assignments, video conferencing and other techniques to improve learning and instruction.

During the 1997-98 academic year, the Instructional Innovation Center served 3,861 individuals on a walk-in basis and conducted 361 classes for faculty and staff. The Technology Center provided technical assistance to 22 departments.

The following classes were available for individual and group training.

Multimedia and Presentation: Microsoft PowerPoint, Gold Disk Astound, Multimedia Tool Book

Design and Graphics: Aldus Photo Shop, Aldus PageMaker, Corel Draw, Photo Paint, Grypho Morph, Calendar Creator Plus

Miscellaneous Software: Microsoft Word, Microsoft Excel, Microsoft Access, WordPerfect, Lotus, Microsoft Works, Daytimer Organizer, Photo CDs & Clip Art

The following equipment is currently available for use in the Center.

Pentium Computers - 7  
 Macintosh 9500 - 1  
 Laser Printer  
 Color Ink Jet Printers  
 Image & Text Scanner  
 Laser Disk Player  
 CD-ROM Recorder  
 Motion Video Capture Card  
 Computer Microphones  
 LCD Projector  
 iomega Zip Drive  
 Digital Camera  
 VCR-TV & PC Connector  
 Color Laser Printer  
 Fileserver  
 CD-ROM Tower

Faculty terminals provide Internet, E-mail, Advantage Financial System and Student Information System access.

## Learning Resource Center

The Learning Resource Center is equipped with two state-of-the art classrooms where librarians teach students search strategies and techniques for finding relevant information using online databases or using traditional sources. An audiovisual center supports classroom instruction through its graphic, photographic and audio production facilities. The instructional television center provides a contemporary studio and the means to broadcast telecourses directly to students' homes.

**LEARNING RESOURCE CENTER SERVICES 1988-89 TO 1997-98**

CATEGORY/SERVICE	88-89	89-90	90-91	91-92	92-93	93-94	94-95	95-96	96-97	97-98
Collections – All items	376,176	380,421	371,084	365,550	361,186	366,946	316,468	375,394	247,448	250,004
Materials Processed (#)	---	---	---	8,538	9,651	13,683	11,265	15,977	12,641	6,118
LIBRARY ATTENDANCE										
User Headcount for 2 <sup>nd</sup> & 3 <sup>rd</sup> Floors Only	---	---	443,175	416,205	366,717	366,059	373,482	352,000	377,788	333,017
LIBRARY INSTRUCTION										
Group Instruction Sessions	303	304	333	347	377	434	478	503	549	548
Students Taught in GIS Sessions	8,863	10,129	9,345	9,429	10,514	11,873	12,180	12,272	12,324	11,371
Reference Questions	---	---	---	---	31,008	34,880	44,256	44,960	39,552	35,201
Directional Questions	---	---	---	---	23,264	19,840	23,856	23,584	22,176	19,950
BOOK COLLECTION										
Book Circulation	62,375	62,330	58,729	53,095	56,318	68,757	56,839	56,238	52,872	82,909
In-Library Use of Books	78,698	80,104	75,253	88,137	86,189	64,408	59,692	37,017	87,931	111,952
Interlibrary Loans	3,799	4,378	3,659	4,512	4,636	6,492	8,211	8,736	7,152	7,098
PERIODICALS COLLECTION										
Periodical Circulation	60,835	112,728	81,108	76,464	62,717	61,424	68,591	61,834	54,893	39,355
AUDIOVISUAL COLLECTION										
AV Equipment Circulation	9,306	12,733	13,758	17,518	19,120	22,144	14,081	13,950	10,453	8,507
In-Library/ACCD Use of AV materials & Equipment	---	---	---	---	18,350	26,263	19,799	33,070	32,958	23,326
INSTRUCTIONAL TELEVISION										
Studio, Campus & Remote Shoots (# Hours)	---	---	585	305	211	323	511	651	392	830
Telecourse Playback	---	---	---	---	---	---	1,885	2,135	2,069	1,461
Editing/Dubbing Sessions (# Hours)	---	---	85	117	196	177	194	305	190	3,342
Teleconference Program (# Hours)	---	---	42	74	146	149	77	103	109	59

SOURCE: Learning Resource Center

## Student Learning Assistance Center

The Student Learning Assistance Center (SLAC) supplements classroom instruction by offering learning strategies that enhance the success potential of traditional and non-traditional students in the college environment. The goal of the SLAC is to enable the Alamo Community College District (San Antonio College, St. Philip's College, Palo Alto College, and Northwest Vista College) students to be independent and resourceful learners by providing learning strategies appropriate to non-traditional students and students with diverse learning styles. SLAC develops independent learners by teaching students how to learn rather than merely giving them quick answers. The learning strategies offered through the SLAC include: Tutoring Services, Computer Services, Video Tapes Services and Study Skill Services.

The SLAC has several computer programs for student use such as Accounting, Electronic mail, Foreign Languages tutorial, Internet access, Microsoft Office and word processing. The computers are available on a first-come, first-serve basis. On occasion, a teacher will bring a class into the SLAC for a demonstration of a specific software package, which may require several computers to be reserved for the class period.

During the 1997-98 school year, the SLAC had 51,068 student visits to use the computer facilities. Software programs include MS Word, WordPerfect, accounting, spreadsheets, databases, internet, foreign languages, management, history, psychology, mathematics and chemistry. Over 230 class sessions were held in the SLAC during the year from Management, Business Administration, Legal Assisting, English, Public Administration, Chemistry and Computer Science.

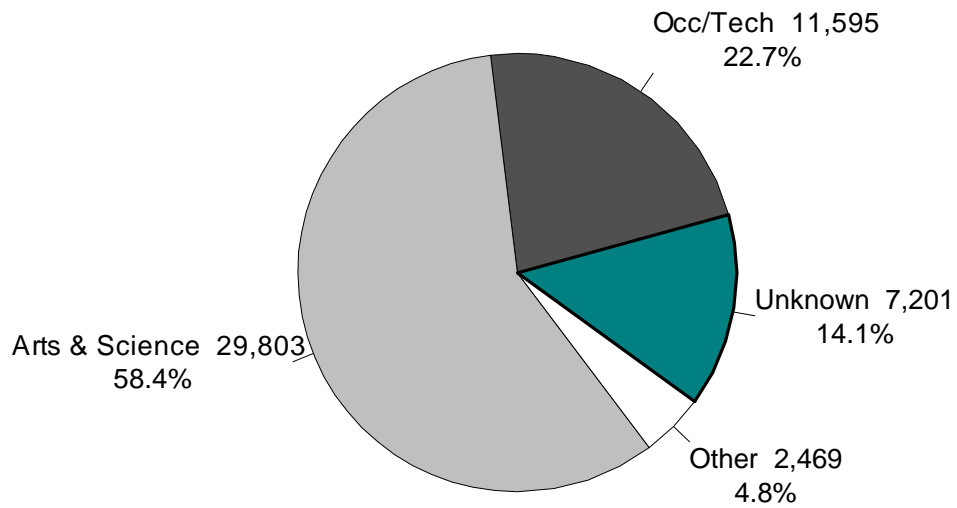
### STUDENT LEARNING ASSISTANCE CENTER VISIT SUMMARY

1997-98

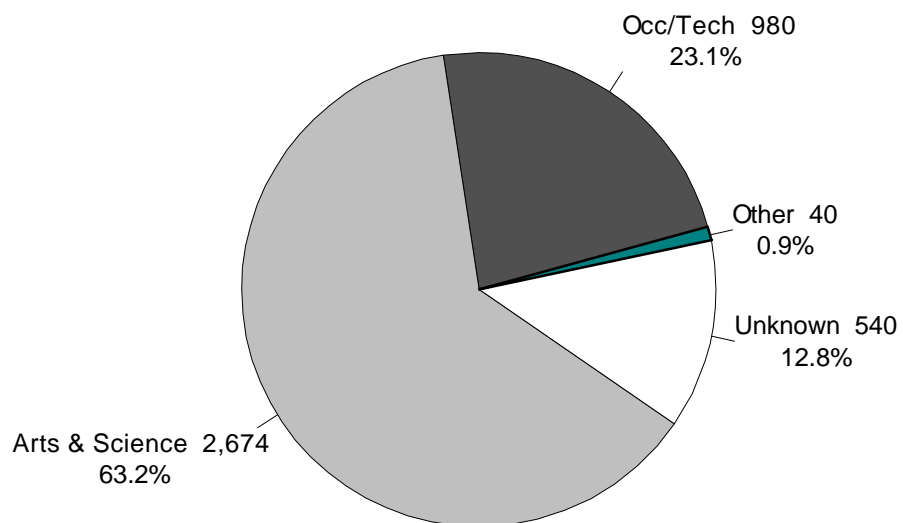
User	Computer		Tutoring		Lang. Lab	Workshops Seminars	Total All
	Usage		Visits				
Occupational & Technical Ed.	11,595	25%	980	25%			
Arts & Science	29,803	64%	2,674	69%			
Continuing Education	1,133	2%	4	0%			
Unknown	7,201	16%	540	14%			
Northwest Vista College	1	0%	0	0%			
Palo Alto College	8	0%	1	0%			
St. Philip's College	26	0%	3	0%			
Nicaragua Peace Scholarship Program	1,301	3%	32	1%			
<b>TOTAL SLAC VISITS</b>	<b>51,068</b>	<b>100%</b>	<b>4,234</b>	<b>100%</b>	<b>7,202</b>	<b>147</b>	<b>62,651</b>

SOURCE: Student Learning Assistance Center

**STUDENT LEARNING ASSISTANCE CENTER COMPUTER USAGE 1997-98**  
**(51,068 Total Visits)**



**STUDENT LEARNING ASSISTANCE CENTER TUTORING VISITS 1997-98**  
**(4,234 Total Visits)**



SOURCE: Student Learning Assistance Center



## Transfer

## Tech Prep

San Antonio College is engaged in major technical and professional career preparation by providing continuity of learning and quality educational opportunities for all students. The Tech Prep/Associate Degree program is a significant component of this concept providing educational and career preparation in technical fields to high school students who will be the workforce of the future.

The concept of Tech Prep involves a sequence of knowledge and skills acquisition beginning in elementary school, linked with a guided, integrated high school plan of academic and technical subjects which connects the student to the community college and the university. Articulation provides the avenue for high schools and community colleges to share a jointly developed competency-based, industry-validated curriculum without duplication or repetition. The Tech Prep curricula in high school and colleges represent a rigorous body of knowledge and skills that will prepare a better-educated worker with advanced skills and the ability to apply these skills as the world of technology changes.

In collaboration with local independent school districts, San Antonio College has developed Tech Prep Associate Degree programs in Child Development, Computer-Aided Drafting and Design, Criminal Justice/Law Enforcement, Electronics and Office Systems Technology. These programs have been presented for approval by the Texas Higher Education Coordinating Board.

## Transfer Resource and Advisement Center

In the Transfer Resource and Advisement Center, students may obtain 2 + 2 degree plans, admission and scholarship applications to four-year colleges/universities, information on transferring, as well as several computer programs including: Peterson's Financial Aid Program and World Wide Web resources that include Web U. S. universities by state; college and universities-Mexico; office of admission at Universities on the Web, minority scholarships and fellowships, and academic advising resources on the Internet. Use of computers is on an appointment basis. Visits to four-year colleges and universities are offered periodically to allow students to see first hand local and out-of-town college campuses. Admission representatives from various colleges and universities provide students with firsthand information about transferring. A schedule of these visits is maintained in the Transfer Center.

## 2 + 2 Agreements with Four-Year Institutions

Abilene Christian University  
 Angelo State University  
 Baylor University  
 Our Lady of the Lake University  
 Southwest Texas State University  
 St. Mary's University  
 Sul Ross State University  
 Texas A & M University – College Station  
 Texas A & M University – Corpus Christi  
 Texas A & M University – Kingsville  
 Texas Lutheran University  
 Texas State Technical College – Harlingen  
 Universidad de Guadalajara  
 University of Houston  
 University of Houston – Victoria  
 University of the Incarnate Word  
 University of Texas at San Antonio  
 University of Texas Health Science Center – San Antonio

## CONTENTS – STUDENT PROFILE

### GENERAL INFORMATION

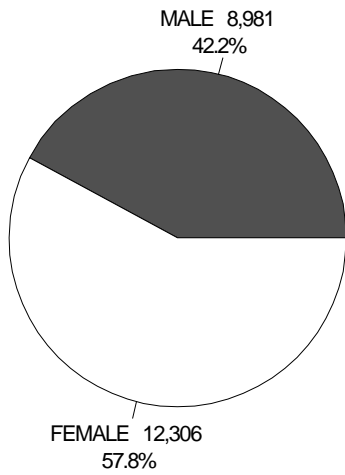
Gender, Ethnicity, Age, Major, Hours Enrolled Day vs. Evening .....	20
Top Ten:	
Academic Majors .....	21
Vocational Majors .....	21
Feeder High Schools .....	21
Zip Codes of Residence .....	22
Counties of Residence .....	22
States of Residence .....	22
Student Objective in Attending San Antonio College .....	23
Intended Duration of Enrollment.....	23
Previous College Experience .....	23
Student Employment Status.....	23
Financial Aid Awards.....	24

### ACADEMIC ACHIEVEMENT

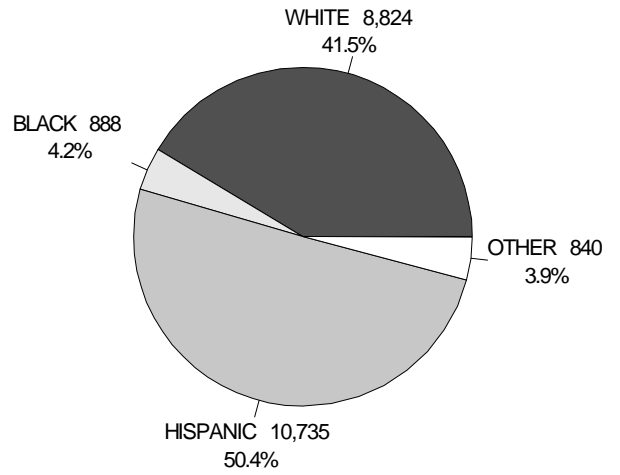
Grade Distribution, Fall 1997 .....	25
Grade Distribution, Fall Semesters 1993-97.....	25
Fall to Fall Retention by Ethnicity, 1991-92 to 1996-97 .....	26
Retention of First-Time, Full-Time Freshmen by Ethnicity, Fall 1996 .....	26
Graduation Degrees & Certificates Awarded 1996-97.....	27
Graduation Degrees by Ethnicity 1996-97 .....	27
Graduation Degrees & Certificates Awarded 1992-93 to 1996-97 .....	27
TASP Results by Institution 1996-97 .....	28
TASP Pass Rates by Ethnicity 1996-97 .....	28
Comparison of ACT Norms By Subject 1996-97 .....	28
Comparison of ACT Norms 1993-94 to 1997-98.....	29

**FALL 97**  
**21,287 STUDENTS**

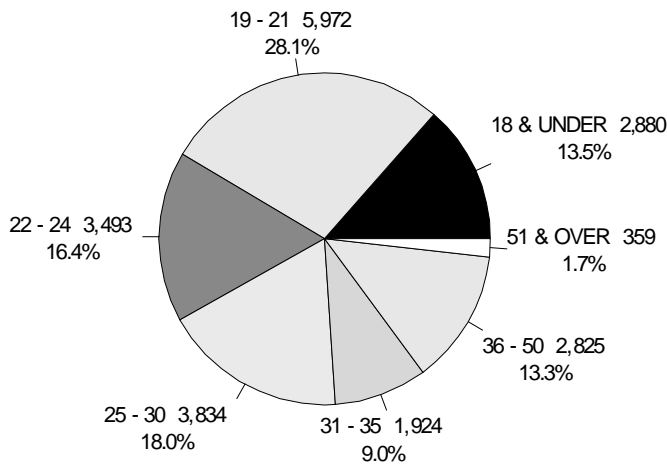
**GENDER**



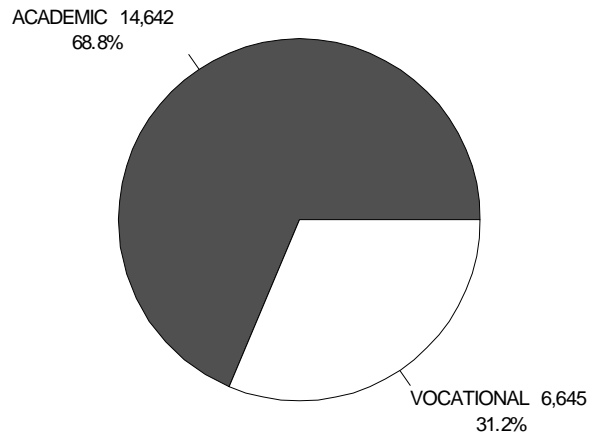
**ETHNICITY**



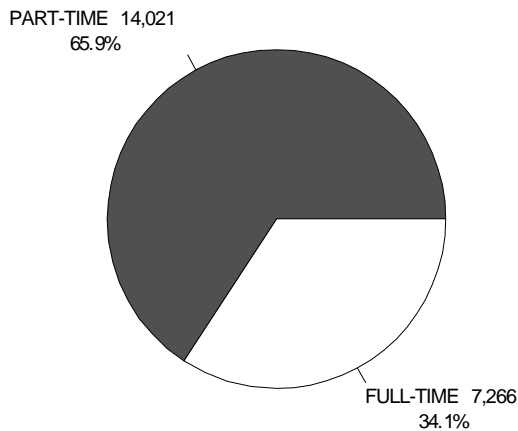
**AGE**



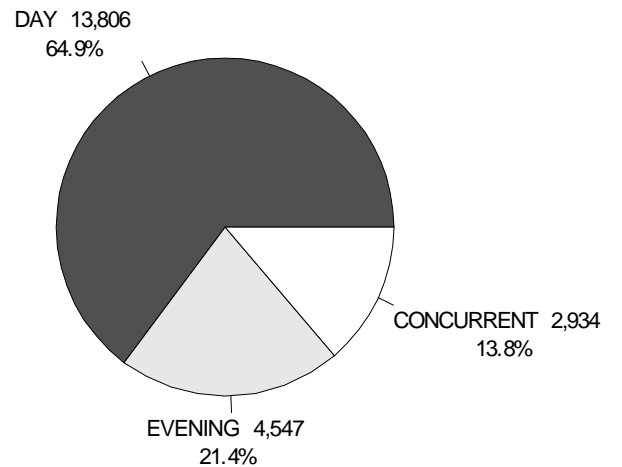
**MAJOR**



**HOURS ENROLLED**



**DAY VS. EVENING**



**FALL 97 - TOP TEN  
ACADEMIC MAJORS**

MAJORS	NUMBER
1. Liberal Arts	6970
2. Business Administration – Accounting	1280
3. Education	1044
4. Psychology	577
5. Biological Sciences	493
6. Nursing (4-Year Degree)	492
7. Computer Science	321
8. Engineering	281
9. Medicine	280
10. Art	216

SOURCE: RCA003, 8/26/98

**VOCATIONAL MAJORS**

MAJORS	NUMBER
1. Pre-Nursing	948
2. Nursing (RN)	447
3. Criminal Justice-Law Enforcement Option	419
4. Computer Programming	305
5. Radio-TV-Film Technology	279
6. Management	261
7. Legal Assisting	242
8. Accounting Technology	228
9. Network Administration	207
10. Electronic Graphic Arts	185

SOURCE: RCA003, 8/26/98

**FEEDER HIGH SCHOOLS (FTIC'S)**

HIGH SCHOOLS	NUMBER
1. Winston Churchill – Northside I.S.D	224
2. Douglas MacArthur – North East I.S.D.	202
3. James Madison – North East I.S.D.	195
4. Alamo Heights – Alamo Heights I.S.D.	178
5. Robert E. Lee – North East I.S.D.	149
6. Thomas Edison – North East I.S.D.	130
7. Tom Clark – Northside I.S.D.	117
8. Theodore Roosevelt – North East I.S.D.	105
9. John Marshall – Northside I.S.D.	102
10. Thomas Jefferson – San Antonio I.S.D.	100

SOURCE: RFA9781, 6/11/98

**FALL 97 - TOP TEN  
ZIP CODES**

ZIPCODES	NUMBER
1. 78250	1004
2. 78228	957
3. 78240	944
4. 78213	915
5. 78201	863
6. 78216	785
7. 78212	751
8. 78247	709
9. 78230	708
10. 78229	689

SOURCE: RFA9421, 8/26/98

**COUNTIES OF RESIDENCE**

COUNTIES	NUMBER
1. Bexar	19,659
2. Comal	574
3. Guadalupe	350
4. Kerr	175
5. Kendall	91
6. Medina	89
7. Wilson	81
8. Bandera	81
9. Atascosa	56
10. Frio	13

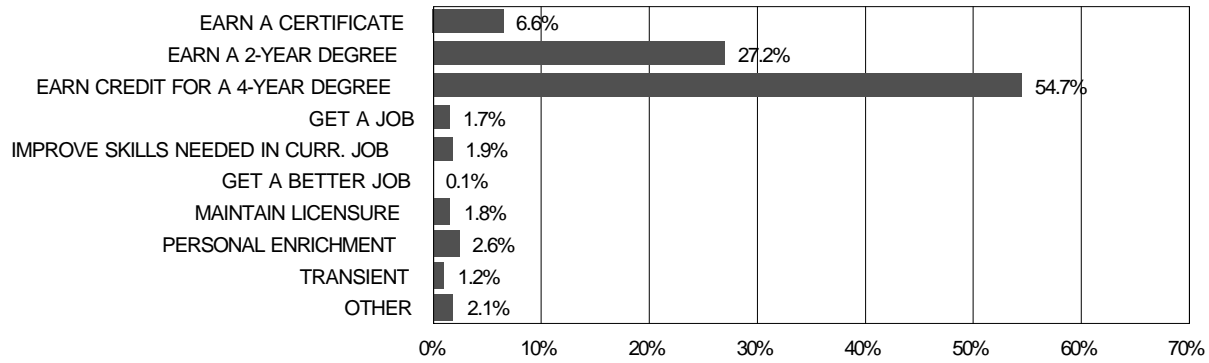
SOURCE: RCA003, 8/26/98

**STATES OF RESIDENCE**

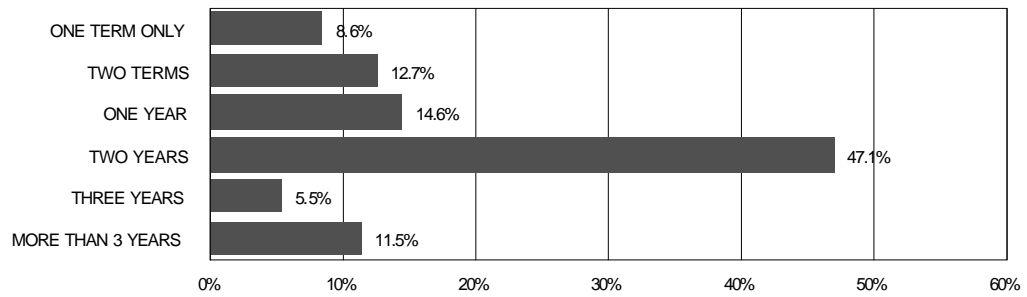
STATES	NUMBER
1. Texas	20,599
2. California	69
3. Missouri	52
4. Florida	51
5. Illinois	29
6. Pennsylvania	25
7. Michigan	20
8. Tennessee	16
9. New York	14
10. Louisiana	13

SOURCE: RCA003, 8/26/98

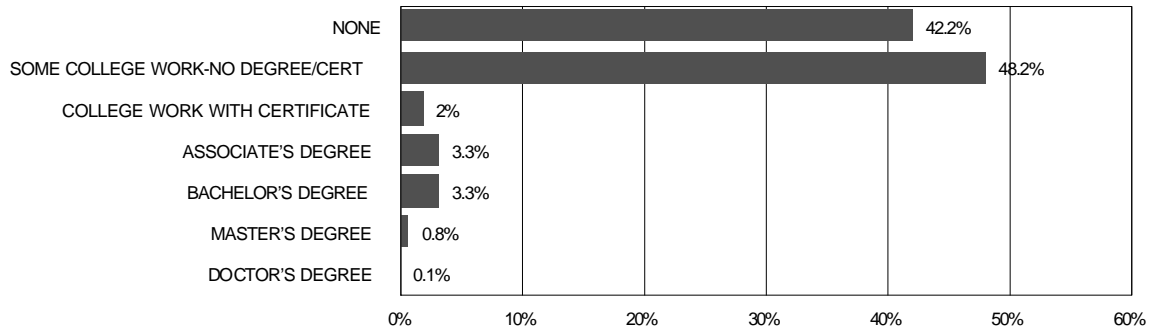
**STUDENT OBJECTIVE IN ATTENDING SAN ANTONIO COLLEGE**



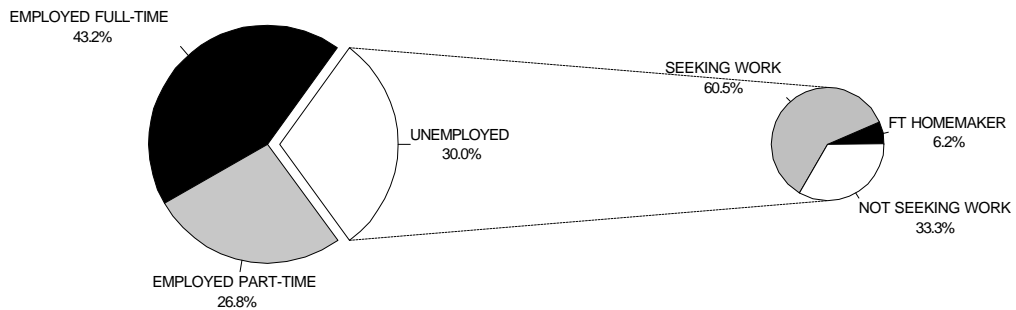
**INTENDED DURATION OF ENROLLMENT**



**PREVIOUS COLLEGE EXPERIENCE**



**STUDENT EMPLOYMENT STATUS**



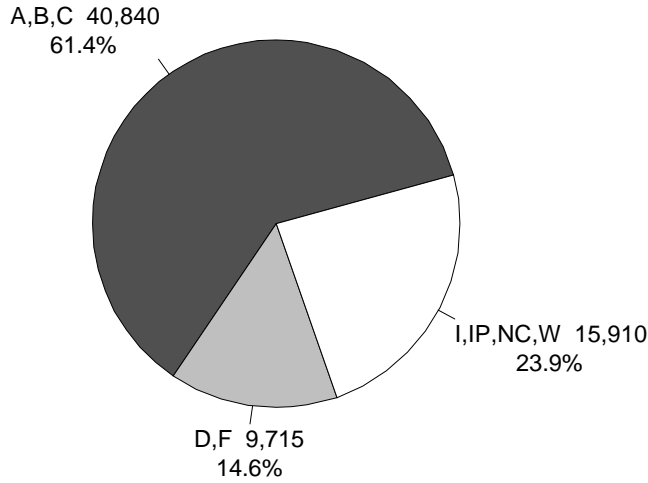
SOURCE: STUDENT TRACKING SURVEY (AFA940, 9/21/98) collected at time of Fall 1997 admission (16,383 total respondents)

**FINANCIAL AID AWARDS 1997-98**

<b>CATEGORY</b>	<b>AMOUNT</b>	<b># AWARDS</b>
Pell Grant	\$10,687,287	7,104
Stafford Loan	7,453,688	3,613
Federal Work Study	673,671	542
Supplemental Education Opportunity Grant (SEOG)	798,903	1,785
Scholarships	509,683	1,240
State Incentive Grant (SSIG)	255,698	477
Texas Work Study	23,897	15
Texas Public Education Grant (TPEG)	802,586	1,285
<b>TOTAL</b>	<b>\$21,205,413</b>	<b>16,061</b>

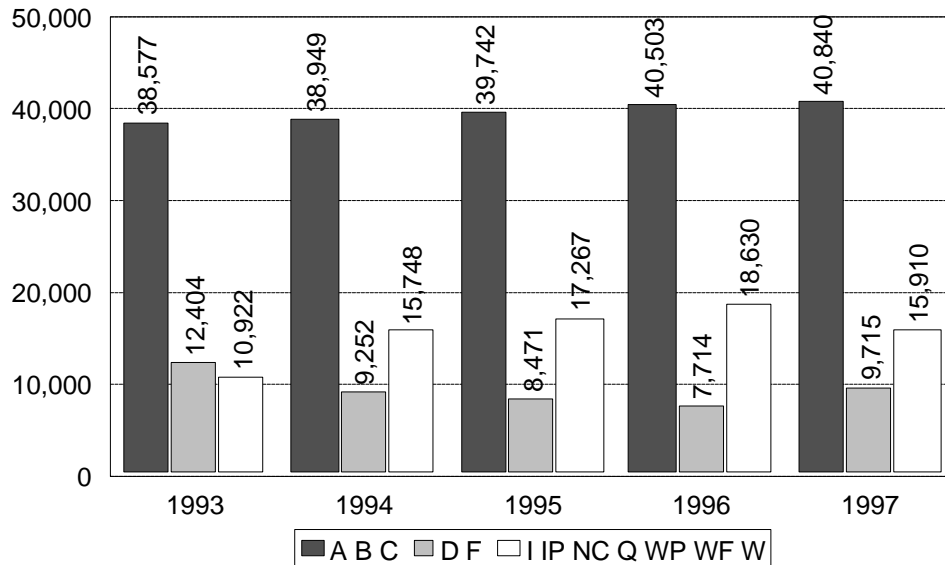
SOURCE: Student Financial Aid Office

**GRADE DISTRIBUTION – FALL 1997**



**GRADE DISTRIBUTION TRENDS – FALL 1993-97**

	A	B	C	Prod Rate	D	F	Comp Rate	I	IP	NC	WF	WP	W	Total
1993	12,527 20.2%	14,590 23.6%	11,460 18.5%	38,577 62.3%	4,164 6.7%	8,240 13.3%	50,981 82.4%	0 0.0%	0 0.0%	246 0.4%	1 0.0%	2 0.0%	10,673 17.2%	61,903 100.0%
1994	12,864 20.1%	15,274 23.9%	10,811 16.9%	38,949 60.9%	3,452 5.4%	5,800 9.1%	48,201 75.4%	0 0.0%	9 0.0%	282 0.4%			15,457 24.2%	63,949 100.0%
1995	13,552 20.7%	15,269 23.3%	10,921 16.7%	39,742 60.7%	3,448 5.3%	5,023 7.7%	48,213 73.6%	1,170 1.8%	199 0.3%	203 0.3%			15,695 24.0%	65,480 100.0%
1996	14,086 21.1%	15,366 23.0%	11,051 16.5%	40,503 60.6%	3,290 4.9%	4,424 6.6%	48,217 72.1%	1,112 1.7%	268 0.4%	238 0.4%			17,012 25.4%	66,847 100.0%
1997	14,406 21.7%	15,459 23.3%	10,975 16.5%	40,840 61.4%	3,422 5.1%	6,293 9.5%	50,555 76.1%	0 0.0%	191 0.3%	158 0.2%			15,561 23.4%	66,465 100.0%



SOURCE: RFA696



FALL TO FALL RETENTION BY ETHNICITY 1991-92 TO 1996-97

	91-92 %	92-93 %	93-94 %	94-95 %	95-96 %	96-97 %
<b>% who reenrolled at San Antonio College the next Fall</b>						
Anglo	41.8	40.3	41.2	41.6	40.9	40.0
Black	37.5	35.8	39.4	38.7	37.3	35.5
Hispanic	45.8	43.0	45.6	45.6	45.5	45.2
Asian	49.0	48.3	45.1	46.7	45.0	51.8
Native American/Alaskan	48.8	43.0	38.2	48.3	44.2	36.5
Alien	51.2	48.6	58.2	48.0	45.3	46.8
<b>Total</b>	<b>43.7</b>	<b>41.6</b>	<b>43.5</b>	<b>43.6</b>	<b>43.2</b>	<b>42.7</b>
<b>Texas</b>	<b>39.8</b>	<b>39.4</b>	<b>39.5</b>	<b>39.1</b>	<b>37.2</b>	<b>38.8</b>
<b>% not found in any state college the next Fall</b>						
Anglo	43.4	45.8	45.6	45.5	45.4	46.1
Black	51.3	54.2	50.7	52.5	53.7	53.7
Hispanic	44.4	48.5	44.7	45.4	45.2	45.1
Asian	36.9	39.4	39.8	41.1	41.3	35.3
Native American/Alaskan	43.9	48.8	51.3	38.2	42.1	52.9
Alien	42.7	46.4	33.5	41.2	44.2	48.3
<b>Total</b>	<b>44.1</b>	<b>47.4</b>	<b>45.2</b>	<b>45.6</b>	<b>45.5</b>	<b>45.7</b>
<b>Texas</b>	<b>47.0</b>	<b>47.5</b>	<b>47.1</b>	<b>47.6</b>	<b>47.2</b>	<b>47.3</b>

SOURCE: The Higher Education Coordinating Board Student Migration Report; transfer to private or out-of-state institutions not considered

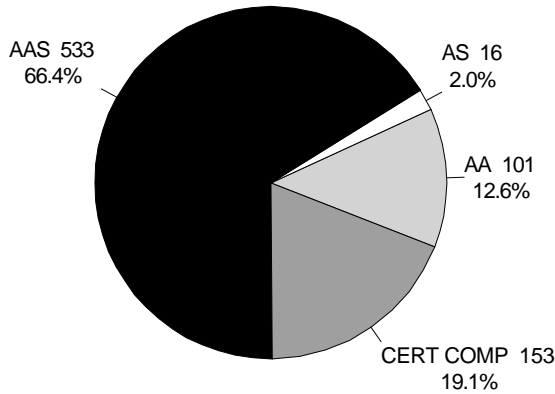
RETENTION OF FIRST-TIME FULL-TIME\* FRESHMEN BY ETHNICITY  
FALL 1996

	WHITE	BLACK	HISPANIC	ASIAN	NATIVE AM/ ALASKAN	INTERNATIONAL	TOTAL
<u>San Antonio College</u>							
Enrolled Fall 1995	584	64	952	35	6	23	1,664
Retained After One Year	340	25	561	22	4	11	963
Percent Retained	58.2%	39.1%	58.9%	62.9%	66.7%	47.8%	57.9%
<u>Total – Texas</u>							
Enrolled Fall 1995	24,123	4,077	11,773	1,086	225	618	41,902
Retained After One Year	12,379	1,725	6,522	659	114	298	21,697
Percent Retained	51.3%	42.3%	55.4%	60.7%	50.7%	48.2%	51.8%

SOURCE: Texas Higher Education Coordinating Board – 1997 Statistical Report

- A student who is enrolled in 12 or more semester credit hours at a community college or 8 or more semester credit hours at a technical college.

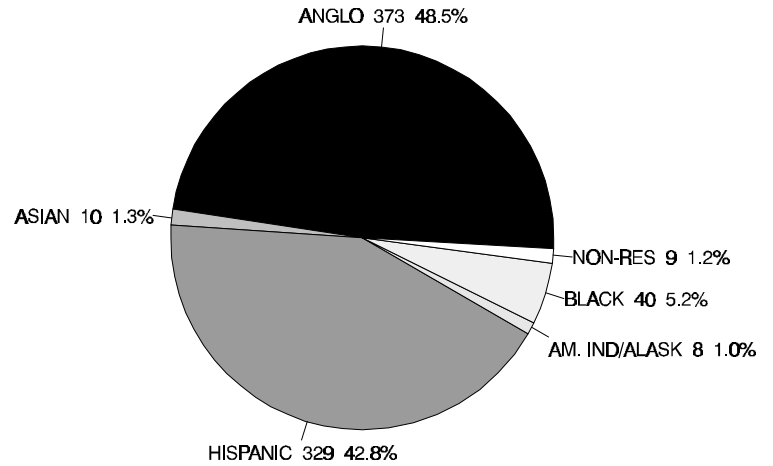
**1996-97 GRADUATION  
DEGREES & CERTIFICATES AWARDED**



TOTAL DEGREES: 803

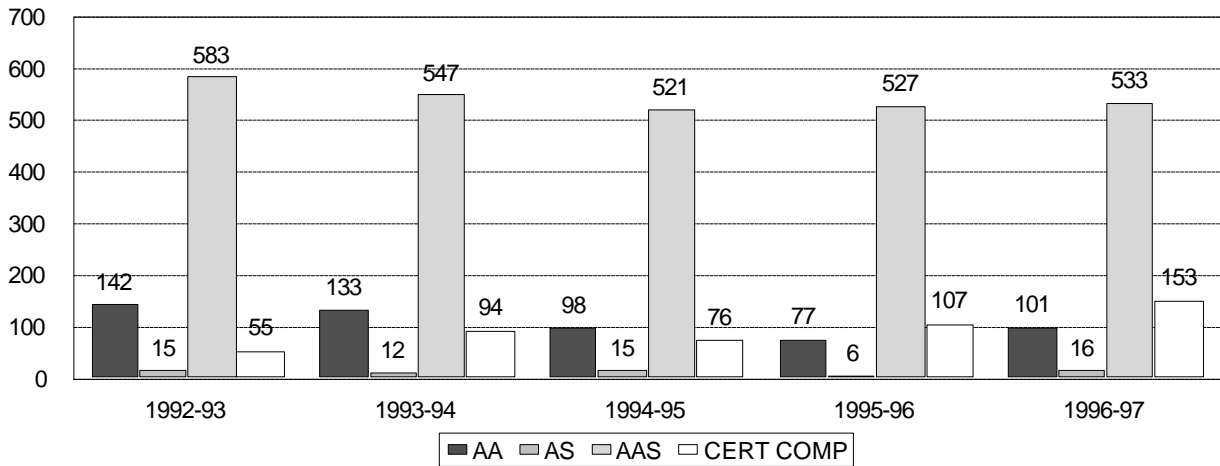
SOURCE: CBM009

**1996-97 GRADUATES  
BY ETHNICITY**



TOTAL GRADUATES: 769

**DEGREES AND CERTIFICATES AWARDED 1992-93 TO 1996-97**



DEGREE OR CERT.	92-93	93-94	94-95	95-96	96-97
AA	142 17.9%	133 16.9%	98 13.8%	77 10.7%	101 12.6%
AAS	583 73.3%	547 69.6%	521 73.4%	527 73.5%	533 66.4%
AS	15 1.9%	12 1.5%	15 2.1%	6 0.8%	16 2.0%
CERT COMP	55 6.9%	94 12.0%	76 10.7%	107 14.9%	153 19.1%
TOTAL	795	786	710	717	803

SOURCE: CBM009

**TASP RESULTS BY INSTITUTION 1996-97**

INSTITUTION	# EXAMINEES	% PASSED READING	% PASSED MATH	% PASSED WRITING	% PASSED ALL SECTIONS
San Antonio College	3,493	73.8	57.6	80.4	46.6
St. Philip's College	1,358	66.9	43.5	75.8	36.4
Palo Alto College	1,531	72.2	53.3	80.8	43.6
UT San Antonio	2,133	86.1	69.8	88.4	61.6
Southwest Texas State U.	2,128	90.6	73.9	93.0	67.9
Texas Two-Year	92,154	62.2	49.6	75.6	39.4
Texas Four-Year	43,255	78.1	63.0	84.0	54.1
Texas Total	135,409	67.2	53.9	78.3	44.1

SOURCE: Texas Higher Education Coordinating Board TASP Test Results Academic Year 96-97. Some students took the test on multiple occasions in the year.

**TASP PASS RATES BY ETHNICITY 1996-97**

INSTITUTION	ASIAN	BLACK	HISPANIC	WHITE	OTHER	TOTAL
San Antonio College	30.7	41.5	42.4	56.1	24.5	46.6
St. Philip's College	25.0	32.3	34.1	45.4	66.7	36.4
Palo Alto College	47.1	44.7	39.5	52.0	50.0	43.6
Texas Two-Year	27.2	24.7	31.8	49.5	32.1	39.4

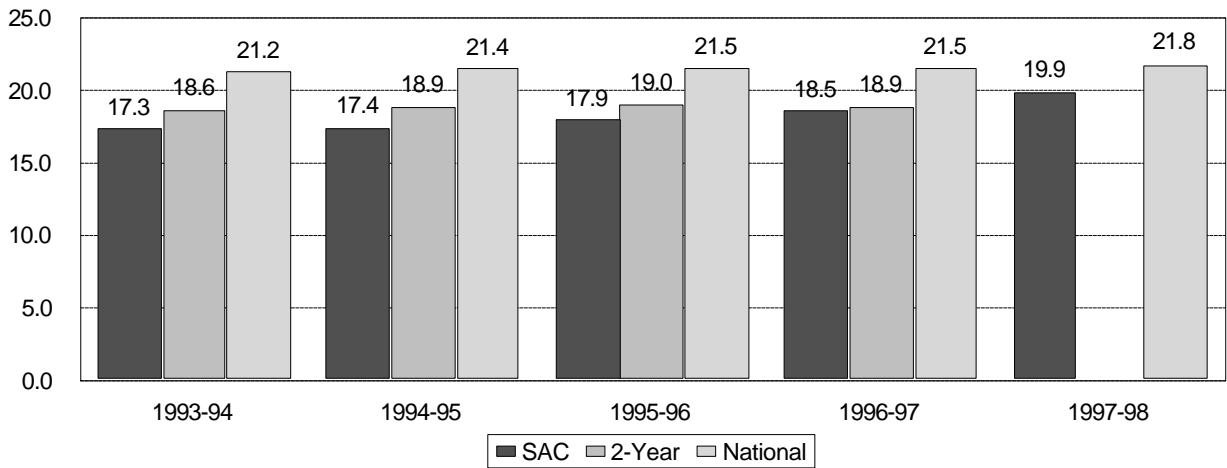
SOURCE: Texas Higher Education Coordinating Board TASP Test Results Academic Year 1996-97. Some students took the test on multiple occasions.

**COMPARISON OF ACT NORMS 1996-97**

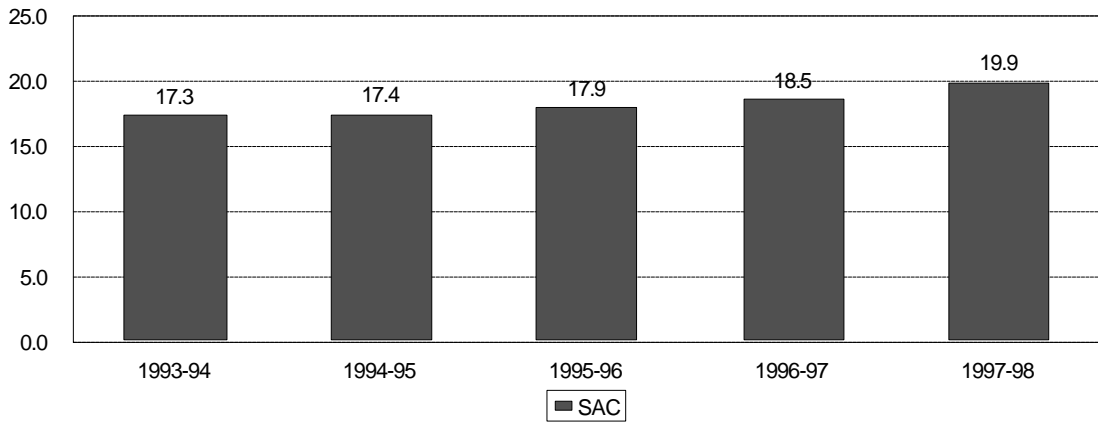
SUBTEST	SAC	2-YR INSTITUTIONS	NATIONAL
English	17.6	18.4	21.1
Math	18.3	18.2	20.7
Reading	18.8	19.3	22.0
Science	18.9	19.4	21.6
Composite	18.5	18.9	21.5
# Examinees	729	N/A	544,587

SOURCE: ACT Class Profile National Norms, 1996-97; ACT Class Profile San Antonio College 1996-97

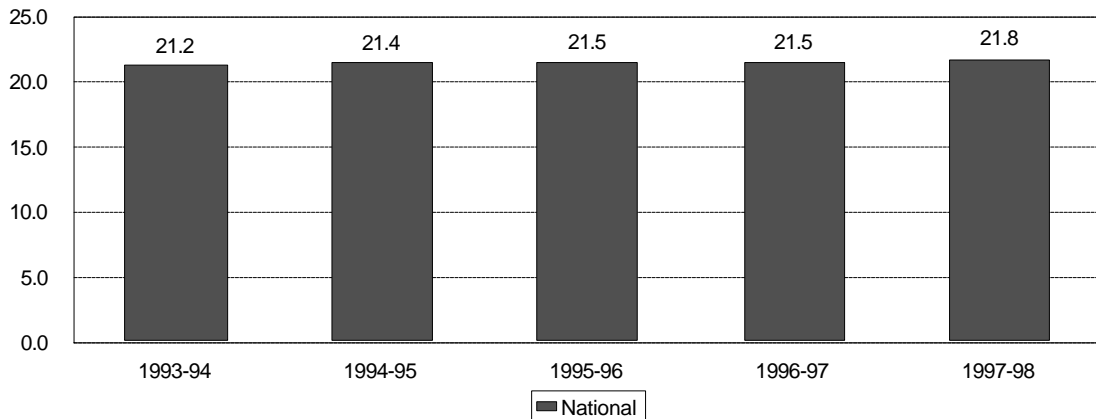
**COMPARISON OF ACT NORMS 1993-94 TO 1997-98**  
**San Antonio College, National, and 2-Year Institutions**



**SAN ANTONIO COLLEGE ACT COMPOSITE SCORES 1993-94 TO 1997-98**



**NATIONAL ACT COMPOSITE SCORES 1993-94 TO 1997-98**

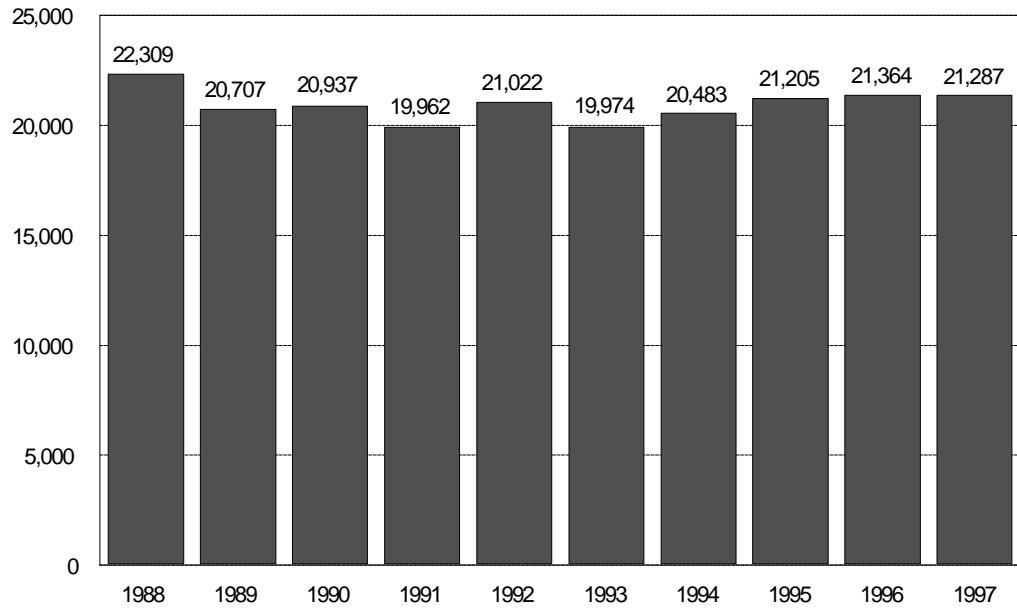


SOURCE: ACT Class Profile Reports, 1993-98  
 97-98 2-Year Institution scores not yet available

## CONTENTS – ENROLLMENT TRENDS

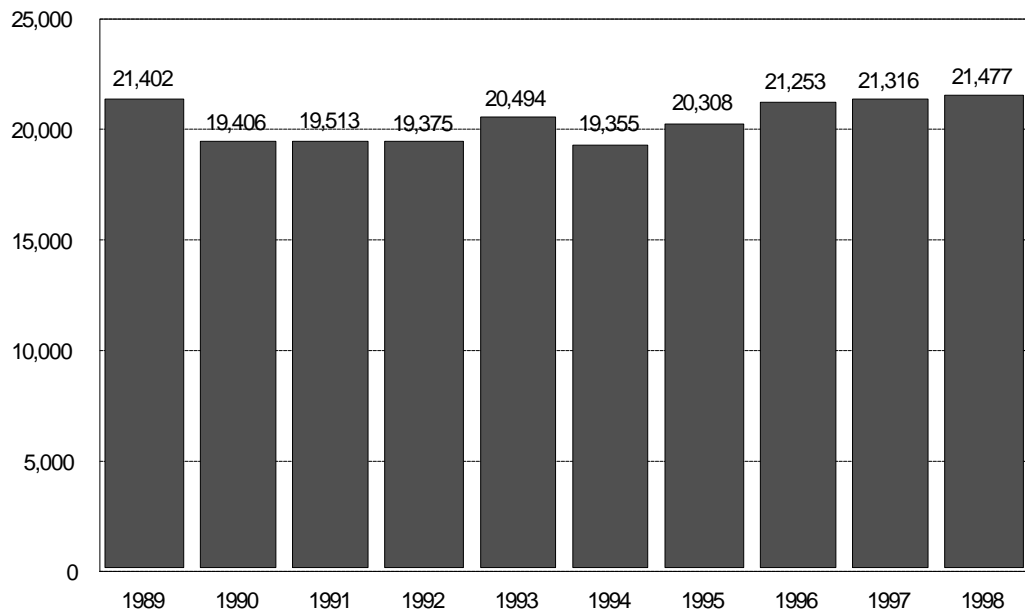
Credit Programs:	
Fall Semesters 1988-1997 and Spring Semesters 1989-1998.....	31
Summer I & II Sessions 1989-1998.....	32
By Classification Fall Semesters 1993-1997 (Summary Statistics).....	33
By Gender .....	34
By Ethnicity.....	34
By Division.....	35
Part-Time vs. Full-Time .....	35
Day vs. Evening.....	36
By Residency .....	36
By Age.....	37
First-Time Students .....	37
Contact Hours, Fall & Spring 1993-94 to 1997-98.....	38
Contact Hours, Summer I & II 1994-98.....	38
Off-Campus Enrollment.....	39
Developmental Education:	
Enrollment Fall 1993-97 .....	40
Trends in Developmental Reading .....	41
Trends in Developmental English.....	41
Trends in Developmental Math.....	41
Continuing Education:	
Highlights.....	42
Contract Training.....	43
Contracts .....	44
Total Enrollment 1988-89 to 1997-98 .....	45
Tuition/Fee Revenue 1988-89 to 1997-98.....	45
Reimbursable Headcount by Quarter 1993-97.....	46
Reimbursable Contact Hours by Quarter 1993-97 .....	46
Reimbursable Classes by Quarter 1993-97 .....	46
Student Satisfaction Survey .....	47

**ENROLLMENT FALL SEMESTERS 1988 – 1997**



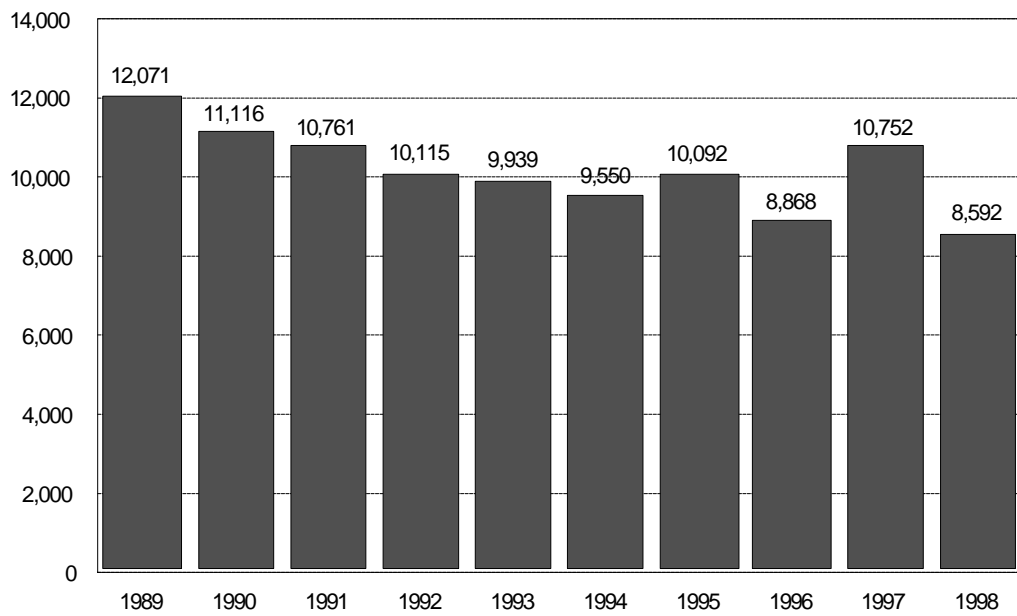
SOURCE: CBM001

**ENROLLMENT SPRING SEMESTERS 1989 – 1998**



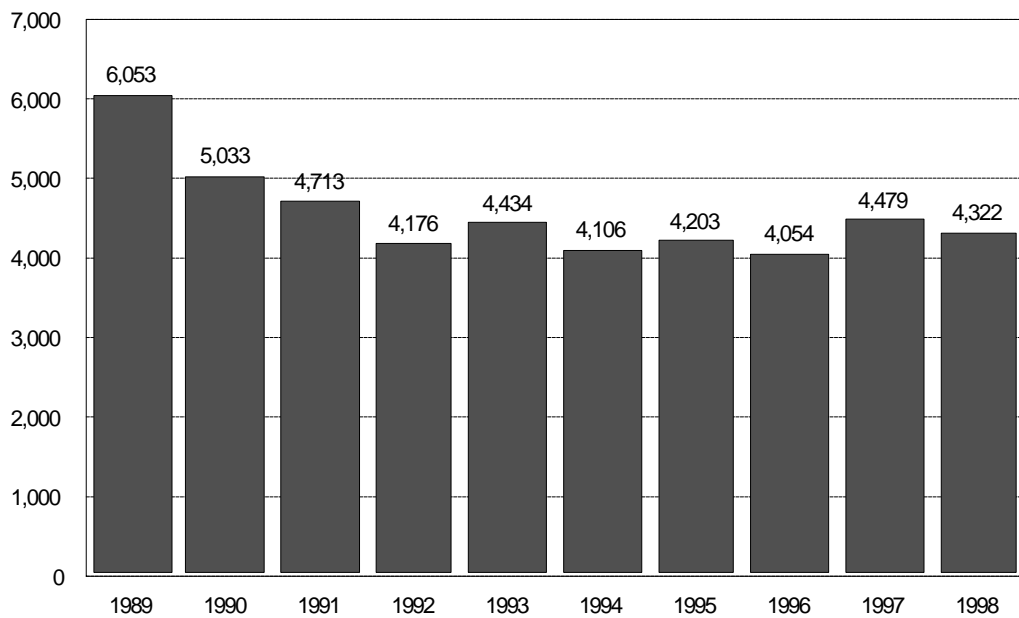
SOURCE: CBM001

**ENROLLMENT SUMMER SESSION I 1989 – 1998**



SOURCE: CBM001

**SUMMER SESSION II 1989 – 1998**



SOURCE: CBM001

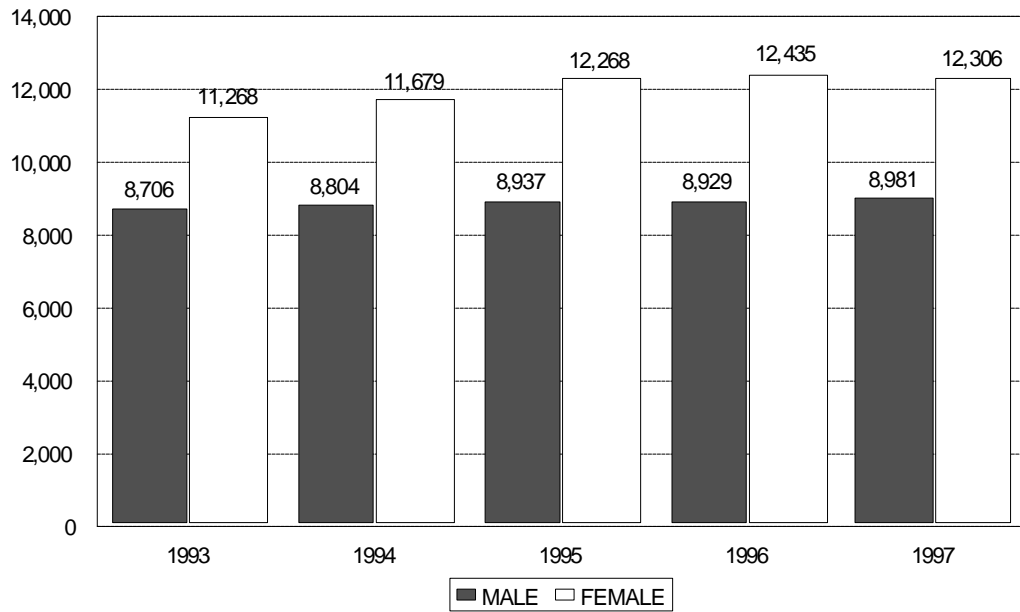
## ENROLLMENT TRENDS BY CLASSIFICATION – FALL 1993-1997

	1993	1994	1995	1996	1997
<b>GENDER</b>					
Female	11,268	11,679	12,268	12,435	12,306
Male	8,706	8,804	8,937	8,929	8,981
<b>ETHNICITY</b>					
White	8,721	8,476	8,676	8,837	8,824
Black	966	1,005	961	926	888
Hispanic	9,506	10,204	10,746	10,795	10,735
Other	781	798	822	806	840
<b>AGE</b>					
17 & under	169	67	118	591	1,128
18	1,641	1,178	1,289	1,687	1,752
19 - 21	5,472	5,973	6,159	6,204	5,972
22 - 24	3,627	3,868	3,803	3,507	3,493
25 - 30	3,769	3,958	4,116	3,885	3,834
31 - 35	2,208	2,206	2,219	2,136	1,924
36 - 50	2,835	2,968	3,138	3,010	2,825
51 - 64	239	289	342	329	341
65 & over	14	19	19	15	18
average age	27	26	27	26	26
<b>DIVISION</b>					
Arts & Sciences	13,818	14,147	14,615	14,832	14,642
Occ/Tech	6,156	6,336	6,590	6,532	6,645
<b>PART-TIME vs. FULL-TIME</b>					
Part-time	13,106	13,604	14,059	13,961	14,021
Full-time	6,911	6,922	7,144	7,394	7,266
<b>DAY vs. EVENING</b>					
Day	11,722	12,355	12,582	12,925	13,806
Evening	5,057	5,020	5,402	5,367	4,547
Concurrent	3,238	3,151	3,219	3,063	2,934
<b>RESIDENCY</b>					
Texas Counties	18,328	18,792	20,413	20,522	20,553
Other States	686	596	577	628	526
Foreign Countries	960	1,095	215	214	208
<b>TOTAL</b>	<b>19,974</b>	<b>20,483</b>	<b>21,205</b>	<b>21,364</b>	<b>21,287</b>

SOURCE: CBM001, 1/7/98; RCA003, 8/26/98

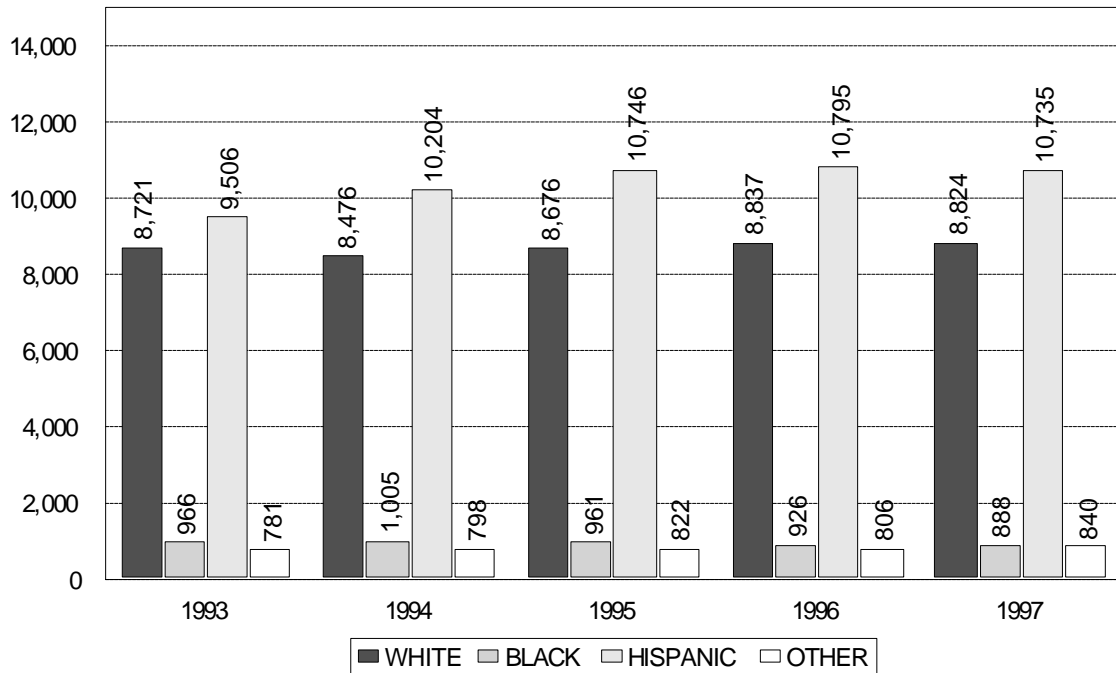


**GENDER FALL 1993 – 1997**



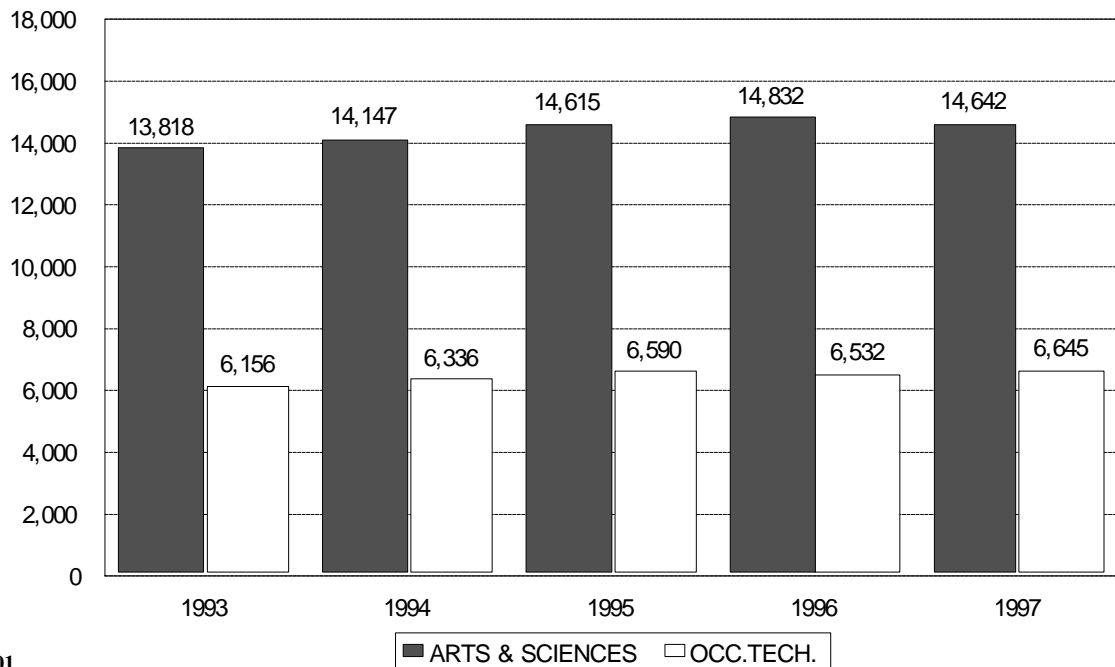
SOURCE: CBM001

**ETHNICITY FALL 1993 – 1997**



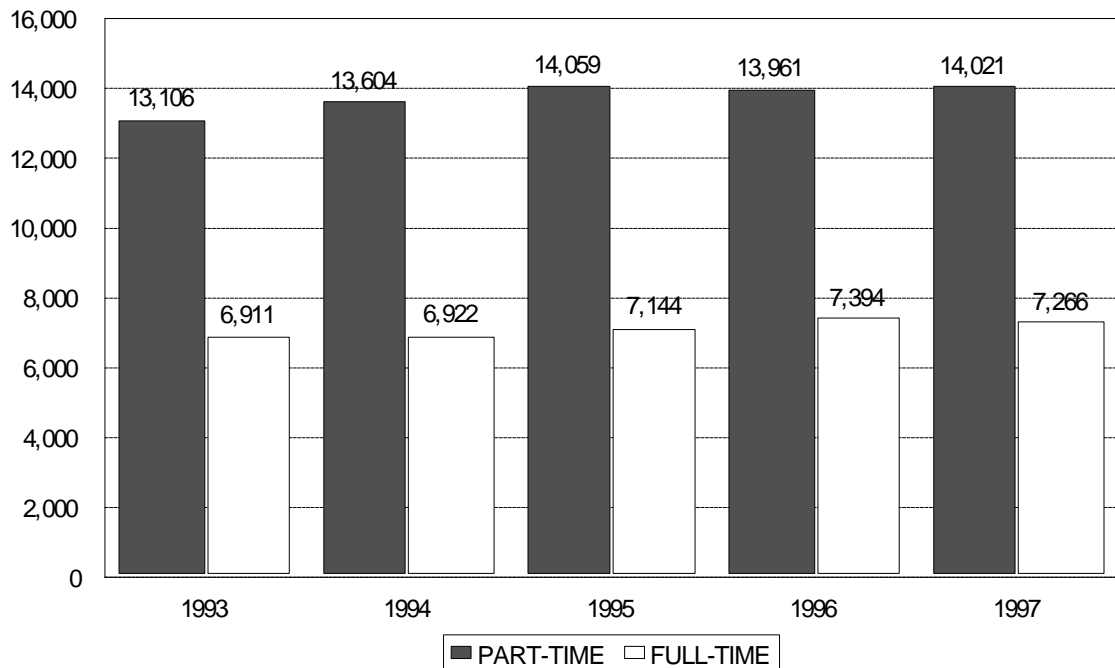
SOURCE: CBM001

**BY DIVISION FALL 1993-1997**



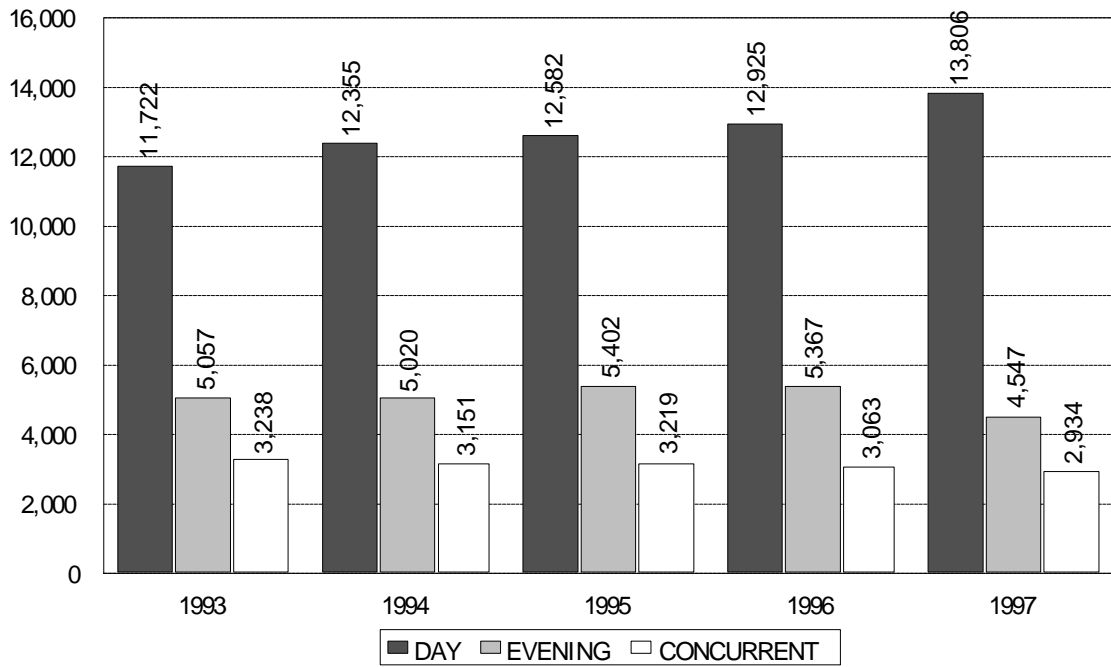
SOURCE: CBM001

**PART-TIME VS. FULL-TIME FALL 1993-1997**



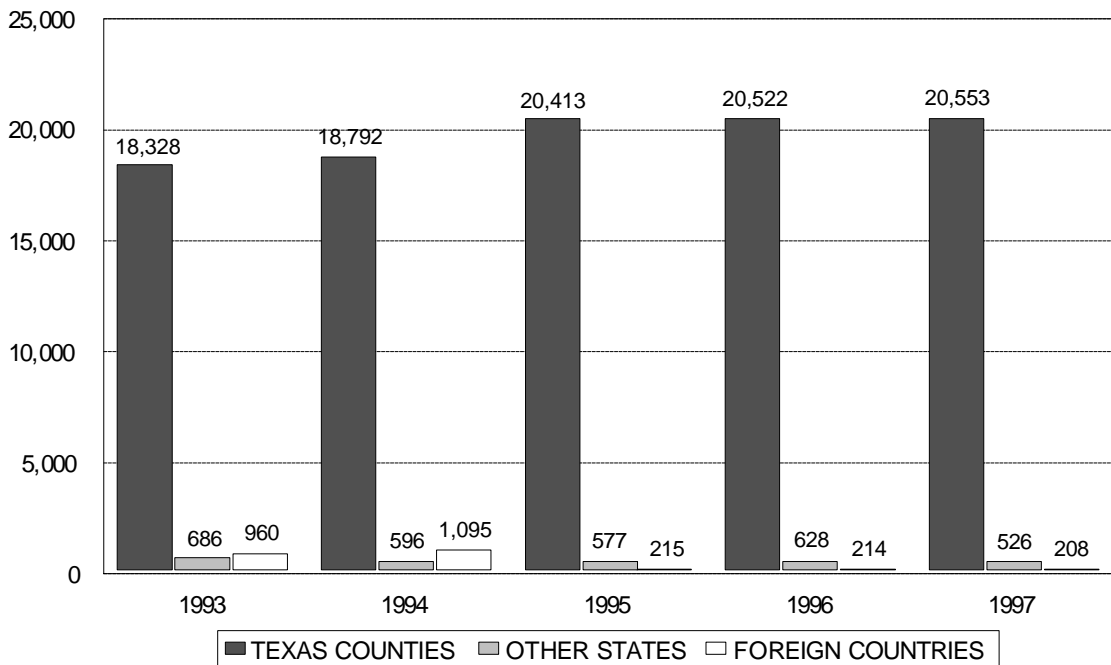
SOURCE: CBM01; RCA003

**DAY VS. EVENING FALL 1993 – 1997**



SOURCE: CBM001; RCA003

**RESIDENCY FALL 1993 - 1997**



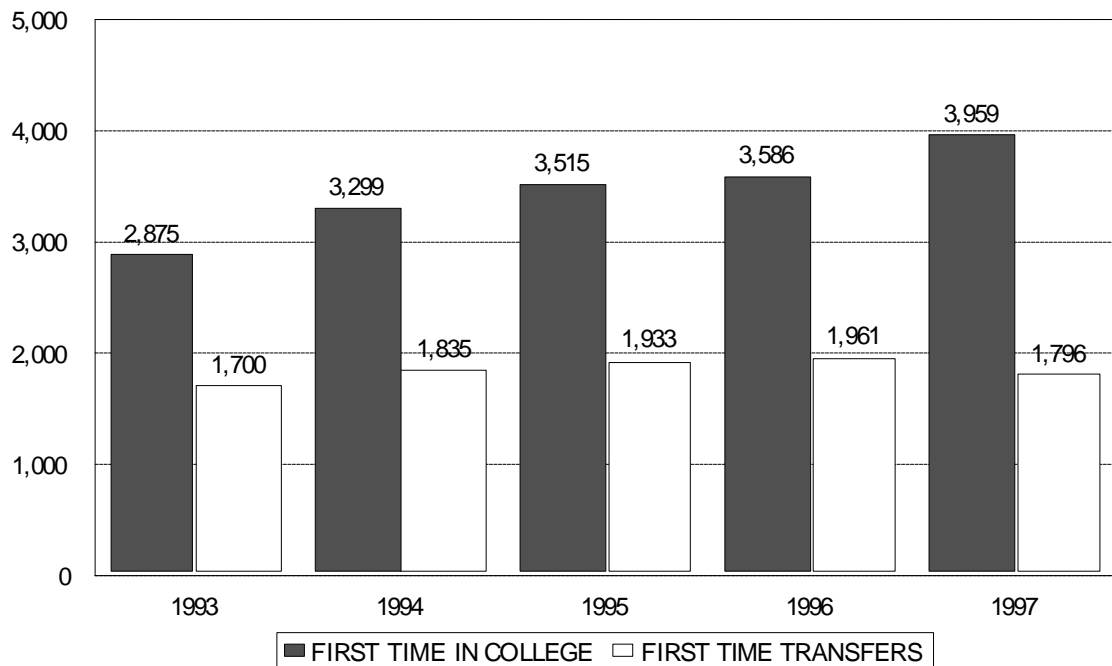
SOURCE: CBM001

**BY AGE FALL 1993 – 1997**

AGE	1993	1994	1995	1996	1997
17 & UNDER	169	67	118	591	1128
18	1,641	1,178	1,289	1,687	1,752
19 – 21	5,472	5,973	6,159	6,204	5,972
22 – 24	3,627	3,868	3,803	3,507	3,493
25 – 30	3,769	3,958	4,116	3,885	3,834
31 – 35	2,208	2,206	2,219	2,136	1,924
36 – 50	2,835	2,968	3,138	3,010	2,825
51 – 64	239	289	342	329	341
65 & OVER	14	308	19	15	18
AVG. AGE	26.5	26.4	26.9	26.3	26.0

SOURCE: CBM001, 1/7/98

**FIRST TIME STUDENTS FALL 1993 – 1997**



SOURCE: CBM001, 1/7/98

## CONTACT HOURS FALL &amp; SPRING SEMESTERS 1993-1998

SEMESTER	ACADEMIC	OCC/TECH	TOTAL
FALL 1993 SPRING 1994*	2,590,784 2,355,632	658,176 726,400	3,248,960 3,082,032
FALL 1994 SPRING 1995*	2,648,176 2,140,816	665,440 752,336	3,313,616 6,163,152
FALL 1995 SPRING 1996*	2,694,864 2,512,192	699,284 806,512	394,148 3,318,704
FALL 1996 SPRING 1997*	2,717,872 2,523,216	710,484 815,938	3,428,356 3,339,154
FALL 1997 SPRING 1998*	2,678,912 2,457,632	693,936 831,504	3,372,848 3,289,136

SOURCE: CBM001; \*includes Fall Flex II terms

## CONTACT HOURS SUMMERS I &amp; II 1994-1998

SEMESTER	ACADEMIC	OCC/TECH	TOTAL
SUM I 1994* SUM II 1994	610,928 304,128	206,960 25,696	817,888 329,824
SUM I 1995* SUM II 1995	645,456 300,016	199,968 27,240	845,424 327,456
SUM I 1996* SUM II 1996	662,528 296,496	241,984 34,464	904,512 330,960
SUM I 1997* SUM II 1997	664,672 315,024	249,646 38,636	914,318 353,660
SUM I 1998* SUM II 1998	647,248 313,216	242,128 30,950	889,376 344,166

SOURCE: CBM001; \*includes Spring Flex II terms

## OFF-CAMPUS ENROLLMENT 1994-95 TO 1997-98

OFF-CAMPUS SITES	F 94	S 95	F 95	S 96	F 96	S 97	F 97
Alamo Heights High School					130	134	143
Bandera High School							24
Brooks Air Force Base				10			
Center Point High School							13
Canyon High School				130	20	245	210
Citicorp/Groos Bank				94		84	88
Del Rio Fire Department	30	30					
Eagle Pass Fire Department	24	23		15			
Edgewood Ind. School District		35	63	49			
Edison High School					22	22	42
Fort Sam Houston	174	154	123	112		76	24
Fox Tech High School		27					
Harlandale High School					28	28	17
Harris Corporation		28					
Holmes High School				311		323	
Lackland Air Force Base	29	28	30	37		33	
Laughlin Air Force Base (Del Rio)				57			
MacArthur High School				110		116	102
Medina Valley High School		6					
New Braunfels High School		176	507		124	246	326
North East Ind. School District	78	51	149				453
Northside Ind. School District	175	289	328				61
Randolph Air Force Base	368	313	291	309		309	321
San Antonio Police Department	72	132					
Seguin High School			162	123		90	34
Smithson Valley High School		13		32			
Tivy High School/Off-campus Kerrville	130	96	302	186	149	302	283
USAA	78	205	250	170		211	85
UT Health Science Center		14					
Telecourses					1,282	1,486	1,349
Internet Courses					9	45	131
New Braunfels Administrative Bldg.				20	2	26	34
<b>TOTAL</b>	<b>1,158</b>	<b>1,620</b>	<b>2,205</b>	<b>1,765</b>	<b>1,766</b>	<b>3,776</b>	<b>3,740</b>

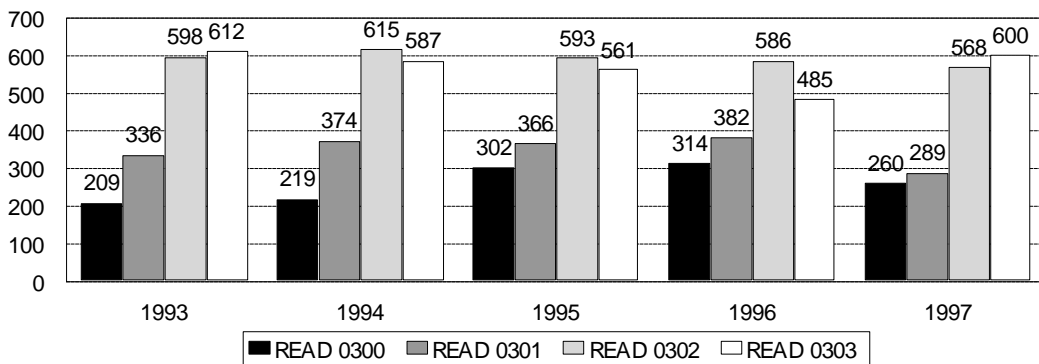
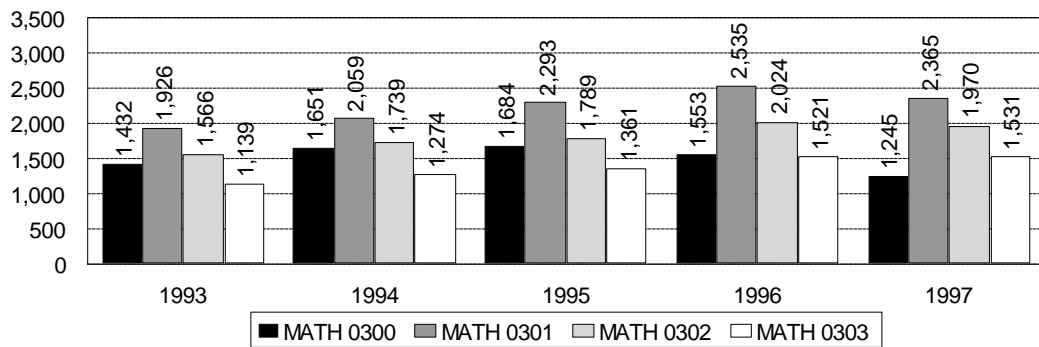
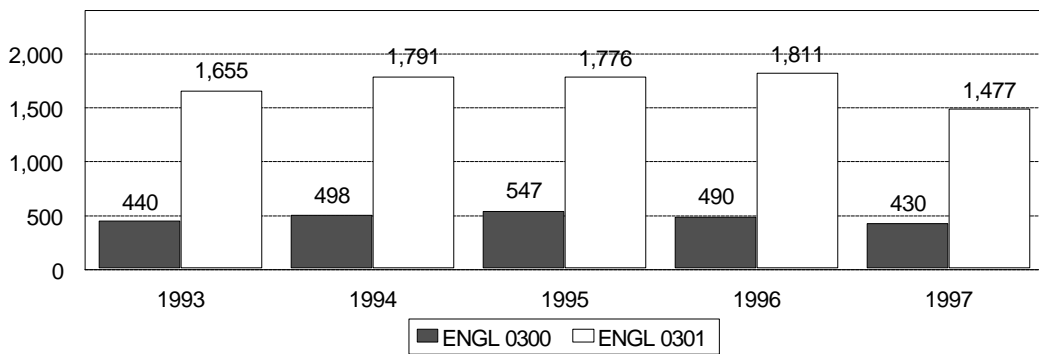
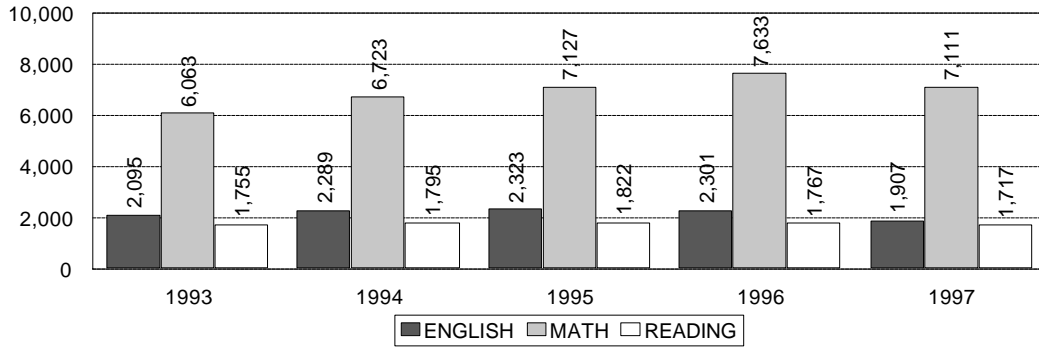
SOURCE: Evening, Weekend &amp; Distance Education Division

**DEVELOPMENTAL EDUCATION  
FALL SEMESTERS 1993-1997**

COURSE		1993	1994	1995	1996	1997
<b>ENGL 0300</b>	ENROLLMENT SECTIONS	440 21	498 23	547 25	490 23	430 19
<b>ENGL 0301</b>	ENROLLMENT SECTIONS	1,655 77	1,791 87	1,776 85	1,811 83	1,477 69
<b>TOTAL</b>	ENROLLMENT SECTIONS	2,095 98	2,289 110	2,323 110	2,301 106	1,907 88
<b>MATH 0300</b>	ENROLLMENT SECTIONS	1,432 47	1,651 54	1,684 65	1,553 62	1,245 50
<b>MATH 0301</b>	ENROLLMENT SECTIONS	1,926 64	2,059 68	2,293 88	2,535 96	2,365 93
<b>MATH 0302</b>	ENROLLMENT SECTIONS	1,566 53	1,739 57	1,789 64	2,024 77	1,970 76
<b>MATH 0303</b>	ENROLLMENT SECTIONS	1,139 39	1,274 44	1,361 48	1,521 57	1,531 57
<b>TOTAL</b>	ENROLLMENT SECTIONS	6,063 203	6,723 223	7,127 265	7,633 292	7,111 276
<b>READ 0300</b>	ENROLLMENT SECTIONS	209 11	219 12	302 16	314 18	260 14
<b>READ 0301</b>	ENROLLMENT SECTIONS	336 18	374 21	366 21	382 22	289 16
<b>READ 0302</b>	ENROLLMENT SECTIONS	598 27	615 28	593 28	586 29	568 26
<b>READ 0303</b>	ENROLLMENT SECTIONS	612 26	587 26	561 25	485 24	600 24
<b>TOTAL</b>	ENROLLMENT SECTIONS	1,755 82	1,795 87	1,822 90	1,767 93	1,717 80
<b>TOTAL</b>	ENROLLMENT SECTIONS	<b>9,913 383</b>	<b>10,807 420</b>	<b>11,272 465</b>	<b>11,701 491</b>	<b>10,735 444</b>

SOURCE: CBM004

### DEVELOPMENTAL EDUCATION FALL SEMESTERS 1993-1997



SOURCE: CBM004



## CONTINUING EDUCATION & WORKFORCE DEVELOPMENT 1997-98

### HIGHLIGHTS

- ❖ End of year productivity totals show the Division registered 17,862 students, reported 408,011 reimbursable contact hours, and generated \$942,688 in tuition and fees revenue, surpassing last year's total.
- ❖ The Division secured a \$289,000 grant from the Texas Skills Development Fund to help Bexar Electric Inc. recruit and train 40 educationally disadvantaged adults for permanent jobs as electrician helpers. The ultimate goal of this 18-month project is to help these trainees acquire their journeyman's license.
- ❖ On-line continuing education programs are now offered by the Division for students wishing to learn from their home or office. Specialized courses include: WEB Publishing, Microsoft Office Applications, PC Troubleshooting, Business, and Management.
- ❖ A partnership agreement between San Antonio College and New TEK, Ltd. was facilitated by Continuing Education. This agreement enabled SAC to serve as an approved training provider for their 3-D animation software and to acquire valuable software and equipment as a result of this partnership.
- ❖ The Division joined the North Chamber of Commerce and the San Antonio Manufacturers Association in forming the Quality Workforce Education Coalition. Intended to facilitate employee training for member employers, the initiative also resulted in the completion of a comprehensive needs assessment report which identified training priorities in the private sector.
- ❖ Basic skills (GED, Remediation, etc.) and language skills (ESL) programs served over 2,600 students. These efforts included the Intensive English Institute program which enrolled over 250 students representing over 14 countries including: Brazil, Cuba, Korea, China, Japan, Iran, Saudi Arabia, Turkey, Egypt, Bosnia, Czech Republic, Spain, and El Salvador.
- ❖ The Division secured funding from the US Information Agency to develop a business internship program for small business owners from the former Soviet Union. The program, consisting of two cycles, introduced free-market economy concepts and provided practical experiences to delegations from Ukraine and Russia.
- ❖ The College for Kids program, now in its 15<sup>th</sup> year, enrolled 528 students this summer.
- ❖ Scobee Planetarium staff is currently involved in a curriculum development project funded by NASA. In partnership with Our Lady of the Lake University, work continues on the development of training and learning models for the middle school space/geoscience disciplines and grade levels.
- ❖ Continuing Education continues to provide leadership in helping to organize College efforts to meet the job training needs of welfare recipients affected by the recent welfare reform measures. In working to establish the Adult Re-Entry Program and securing the cooperation of the Occupational, Technical Education Division and the Department of Services to Special Populations, the institution now has special programs, services, and non-traditional approaches to helping adults become self-sufficient and contributing members of society.
- ❖ In a continuing effort to understand its clientele, the Division established a formal survey approach to record students' first impressions of San Antonio College and Continuing Education in particular. Students were asked about their first contact with staff, the registration process, classroom location, instructional staff, and how the course was conducted. The overall impression registered was mostly positive; particular areas in need of improvement will be addressed during the 1998-99 school year.
- ❖ In support of institutional effectiveness measures, Continuing Education is in the process of surveying contract-training clients to ascertain their opinions of instruction delivered relative to logistics, quality of instruction and employee productivity.

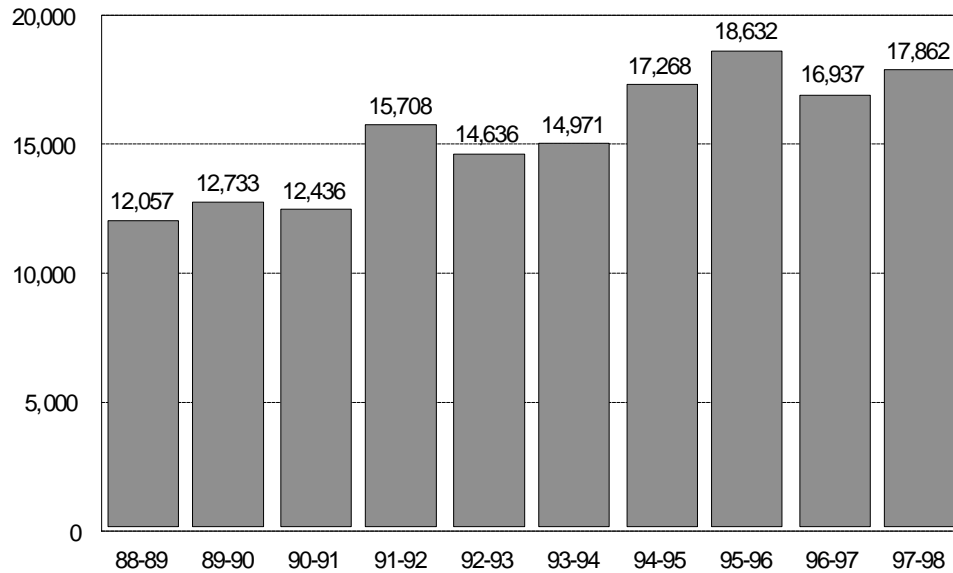
## CONTRACT TRAINING

- ❖ The Division's contract instruction service was retained by 47 employers during this school year and served over 2,200 employees.
- ❖ The College teleconferencing delivery system was utilized for employee training, as part of a State consortium of community colleges, serving PrimeCo, Inc., a national telecommunications company.
- ❖ A specialized nursing course on the Care and Management of Infectious Diseases was presented to nursing students from the Colegio Nacional de Educacion Profesional Tecnica, Mexico City.
- ❖ The Division's Law Enforcement Training Center delivered handgun qualification training to Bexar County Adult Probation Department. Adult Probation officers are now required to carry such protection by new State statutes.
- ❖ The current training contract with the Center for Health Care Services was renewed for the fifth consecutive year in the amount of \$48,000. This relationship enables Continuing Education to continue serving as the primary employee-training provider for this countywide system.
- ❖ Continuing Education was contracted by the Department of the Army, Ft. Sam Houston; to deliver advanced emergency medical technician training to civilian and military personnel. All program completers applied for the National EMT Registry Examination and attained professional certification.

**CONTRACT COMPANIES 1997-98**

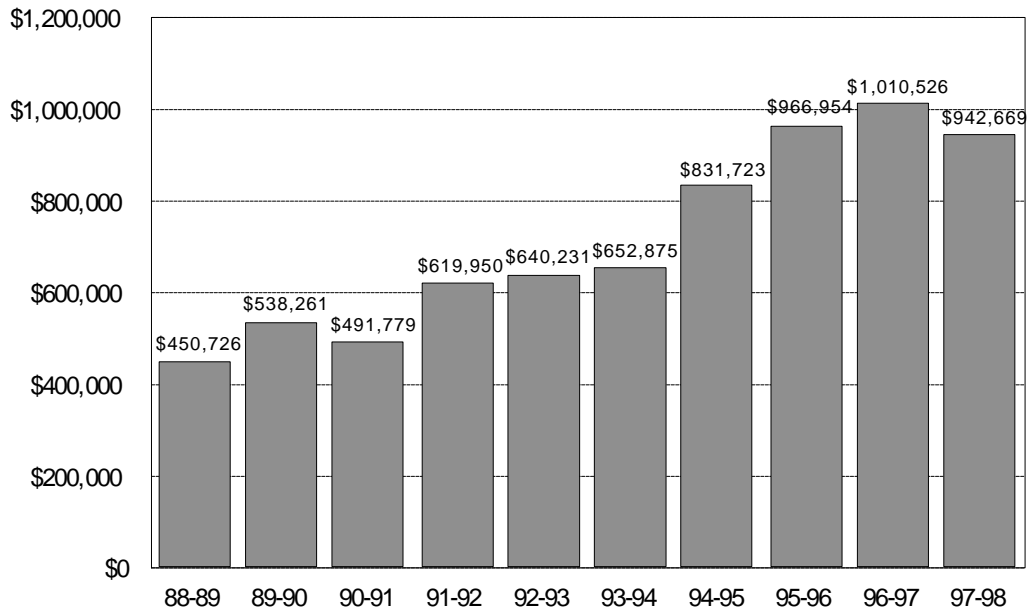
City Public Service  
Inner Health Group  
Ramex Construction Co., Inc.  
Bexar Library Assn.  
Kelly AFB (76th Civil Engineering Group/CEF)  
Seaworld of Texas  
KEI Consultants  
Budro's  
Kelly AFB (76th Medical Group-Bldg 1740)  
GESCO International, Inc.  
Myriad Pharmacy Services  
Pik Nik Foods  
Bexar County Adult Probation  
Northside I.S.D.  
Tobin Surveys, Inc.  
NEISD, Food Service  
St. Peter's - St. Joseph's  
Megamerica Mortgage  
Lackland AFB  
Embassy Suites Hotel - Airport  
Baptist Hospital System  
Bexar County Appraisal District  
Harris Corporation  
Catholic Campus Ministry  
Baptist Temple Day Care  
Ft. Sam Houston (S-4 232nd Medical Battalion)  
Aramark - CPS  
Butter Krust Bakery, Inc.  
LaPetite Academy  
Aramark - Trinity  
Morningside Ministries - The Meadows  
George Muery Services  
CORAL  
Omni Insurance Group  
Bexar County Personnel Office  
Creative Minds Unlimited  
Sonic Drive-Ins  
VIA Metropolitan Transit  
H.B. Zachry Co.  
Mission City Business & Professional Women's Assn.  
City of San Antonio (Jail)  
The Center for Health Care Services  
Wackenhut Corrections Corp.  
American Cancer Society  
City of Kerrville  
PaPa John's Pizza  
U.S. Army Medical Dept.Center  
Aramark - USAA  
Burnup & Sims  
Southwest Texas State University  
City of San Antonio (Human Resources)  
Frontier Enterprises  
Kelly AFB (DPCCT Civilian Training)  
Luby's Cafeterias, Inc.  
Cartotech, Inc.

**CONTINUING EDUCATION  
TOTAL ENROLLMENT 1988-89 TO 1997-98  
(reimbursable & nonreimbursable courses)**



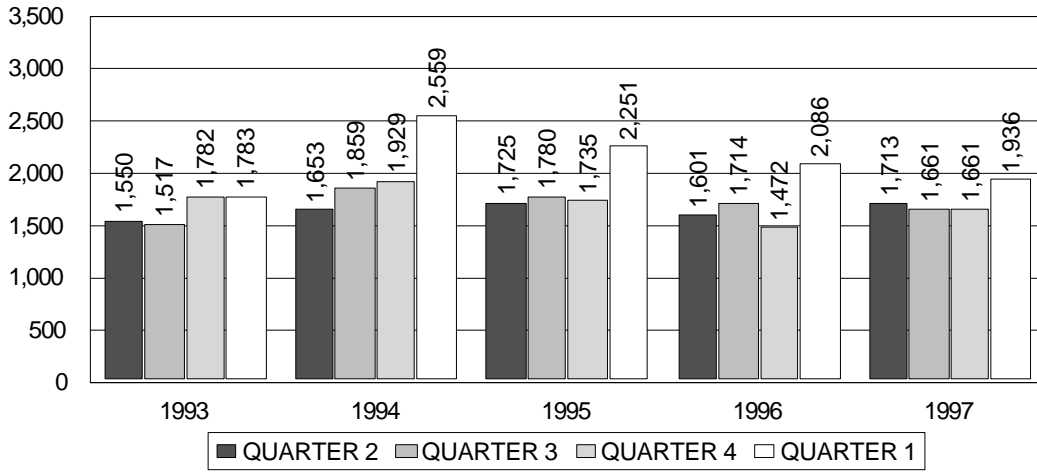
SOURCE: Division of Continuing and Workforce Development

**TUITION/FEE REVENUE 1988-89 TO 1997-98  
(reimbursable & nonreimbursable courses)**

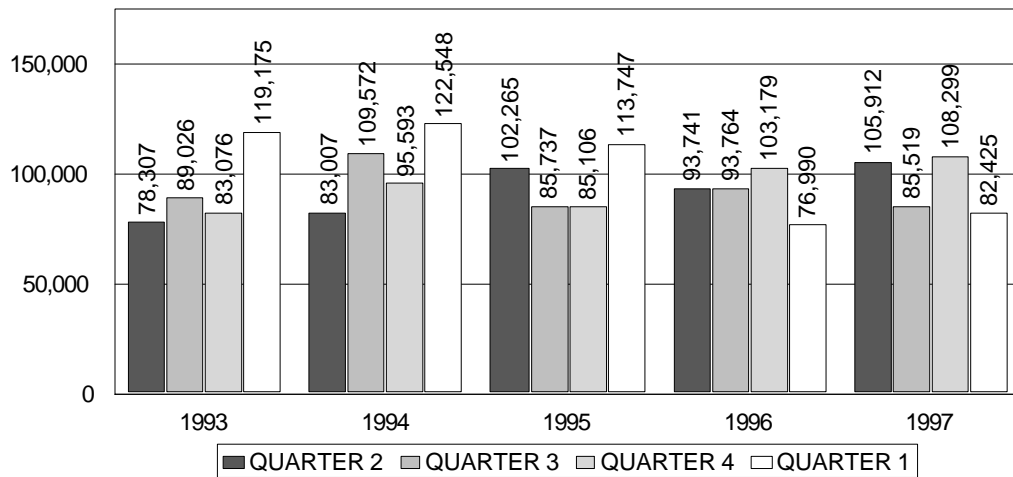


SOURCE: Division of Continuing Education & Workforce Development

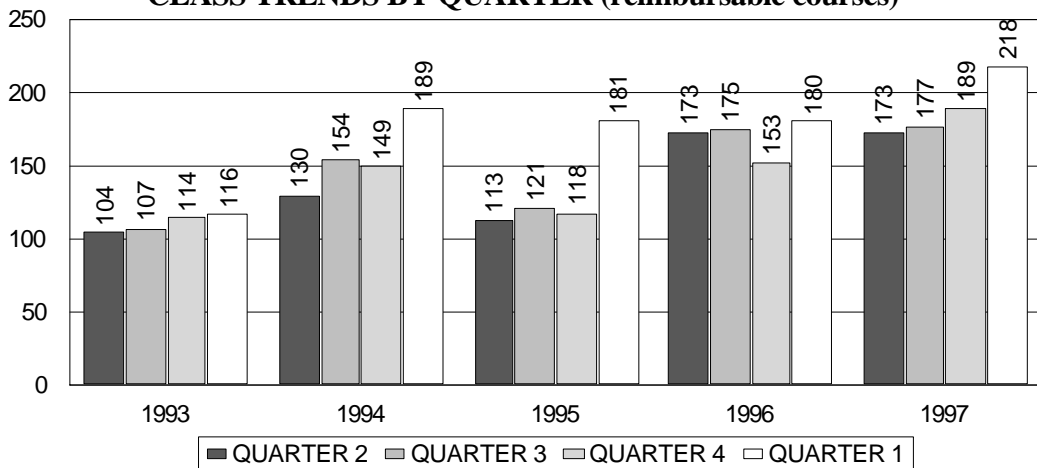
**CONTINUING EDUCATION 1993-97**  
**HEADCOUNT TRENDS BY QUARTER (reimbursable courses)**



**CONTACT HOUR TRENDS BY QUARTER (reimbursable courses)**



**CLASS TRENDS BY QUARTER (reimbursable courses)**



SOURCE: CBM00C

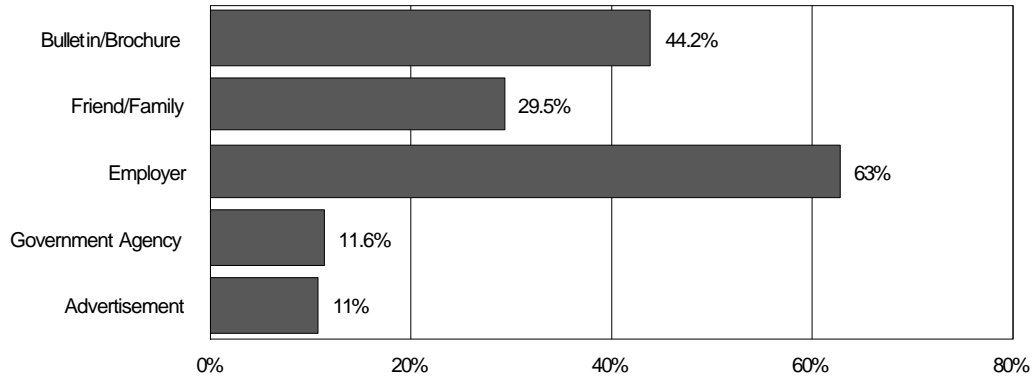
## CONTINUING EDUCATION STUDENT SATISFACTION SURVEY 1997-98

	EXCELLENT	GOOD	AVERAGE	POOR	N/A	TOTAL
<b>HOW WOULD YOU RATE THIS COURSE ON THE FOLLOWING ITEMS?</b>						
Meeting your expectations	3,500	1,922	382	76	8	5,888
	59%	33%	7%	1%	0%	
Meeting course objectives	3,285	1,916	371	46	14	5,632
	58%	34%	7%	1%	0%	
Method of course presentation	3,396	1,719	403	76	9	5,603
	61%	31%	7%	1%	0%	
Course Materials (Handouts, A-V, etc.)	2,929	1,847	562	117	77	5,532
	53%	33%	10%	2%	1%	
<b>HOW WOULD YOU RATE YOUR INSTRUCTOR(S) IN THE FOLLOWING AREAS?</b>						
Knowledge of subject	4,737	912	129	23	8	5,809
	82%	16%	2%	0%	0%	
Enthusiasm for topic/class	4,196	1,209	221	27	9	5,662
	74%	21%	4%	1%	0%	
Listed/Distributed Course objectives during first class meeting	3,642	1,534	284	27	106	5,593
	65%	27%	5%	1%	2%	
Interested in student progress	3,737	1,460	292	39	66	5,594
	67%	26%	5%	1%	1%	
Class met as scheduled, times, dates, and number of classes	4,131	1,148	192	29	46	5,546
	75%	21%	4%	1%	1%	
<b>HOW WOULD YOU RATE FOLLOWING SUPPORT SERVICES FOR THIS COURSE?</b>						
Registration process	1,794	2,089	715	157	768	5,523
	33%	38%	13%	3%	14%	
Counseling by CE staff members	955	1,315	672	121	2,112	5,175
	19%	25%	13%	2%	41%	
Financial Aid	822	863	443	108	2,761	4,997
	16%	17%	9%	2%	55%	
Classroom facilities (on campus)	1,534	1,917	821	172	837	5,281
	29%	36%	16%	3%	16%	
Parking	1,391	1,649	848	600	838	4,326
	26%	31%	16%	11%	16%	

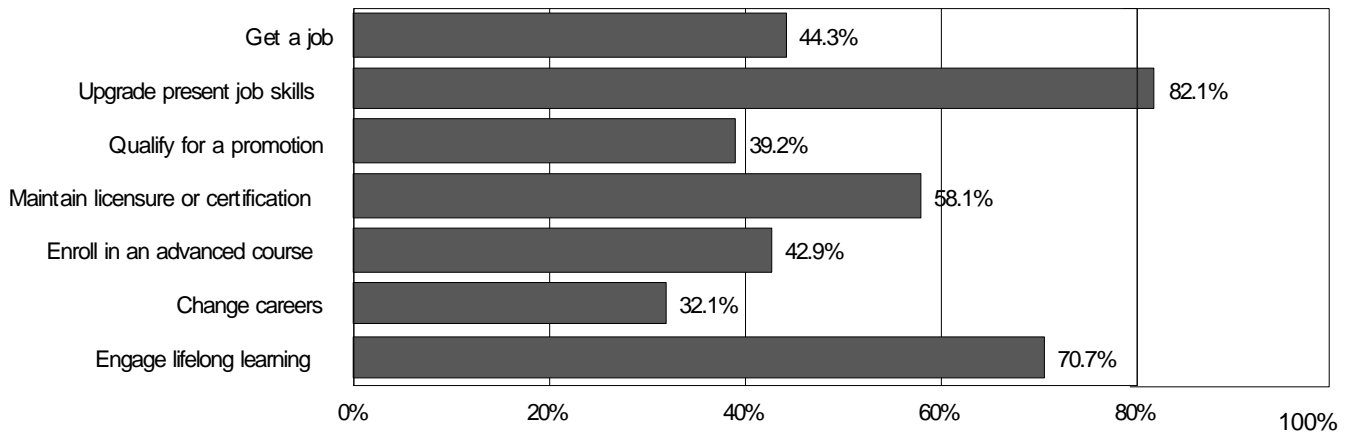
SOURCE: Continuing Education Student Survey, 1997-98

**CONTINUING EDUCATION STUDENT SURVEY 1997-98**  
 (Some students gave more than one response)

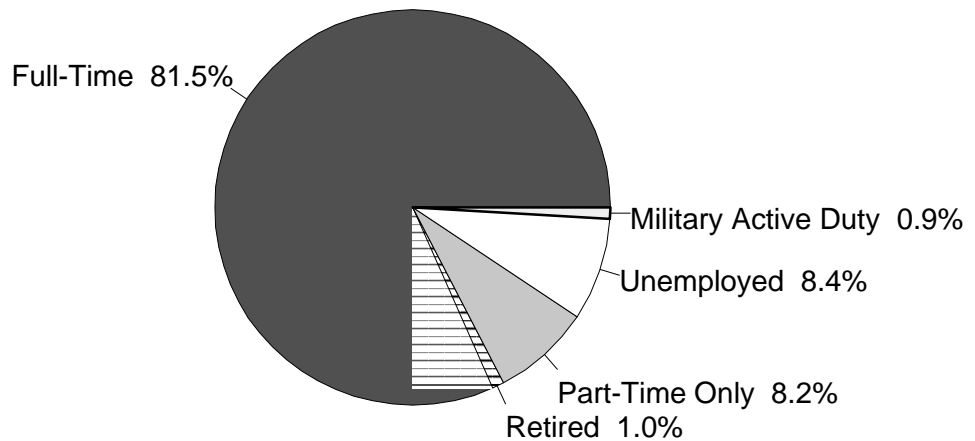
**HOW DID YOU FIND OUT ABOUT THIS COURSE?**



**DURING THIS COURSE, HAVE YOU GAINED THE SKILLS AND KNOWLEDGE TO:**



**WHAT IS YOUR CURRENT JOB STATUS?**



SOURCE: Continuing Education Student Survey, 1997-98

**CONTENTS – PERSONNEL PROFILE**

**FACULTY**

Faculty Profile (Gender, Ethnicity, Age, Highest Degree Earned), Fall 1997 ..... 50  
Full-Time Faculty, Fall 1997 ..... 51  
Faculty Rank, Fall 1997 ..... 51

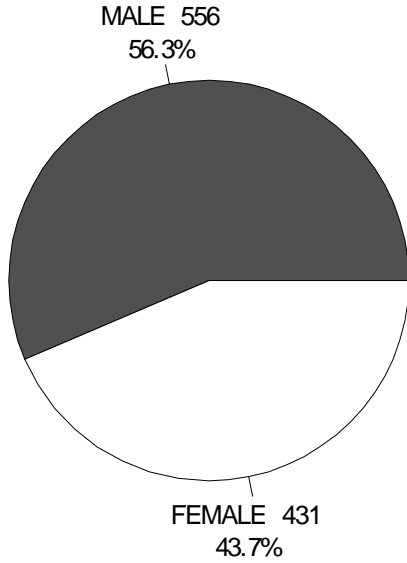
**FULL-TIME EMPLOYEES**

Full-Time Employee Profile, Fall 1997 ..... 52  
By Gender & Classification, Fall 1997 ..... 52  
By Ethnicity & Classification, Fall 1997 ..... 52

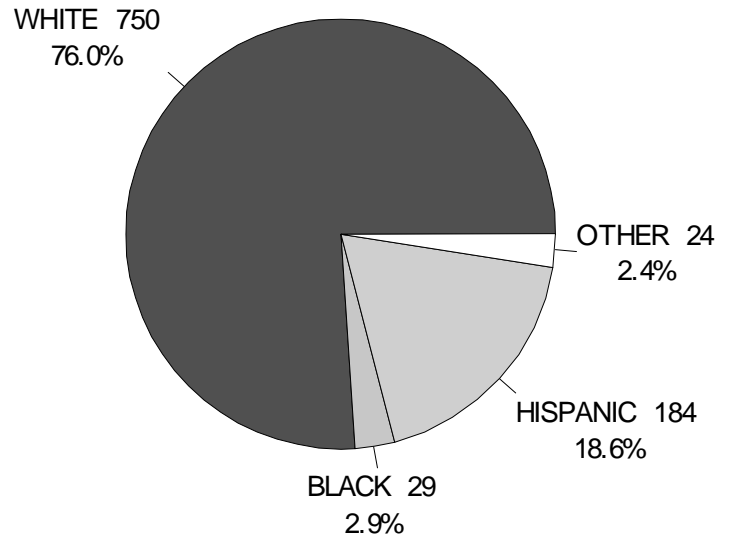


**FACULTY PROFILE – FALL 1997**  
**987 TOTAL FACULTY**

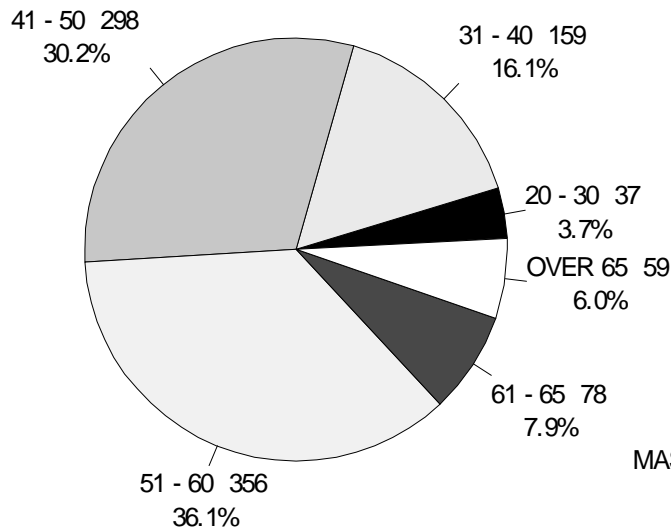
**GENDER**



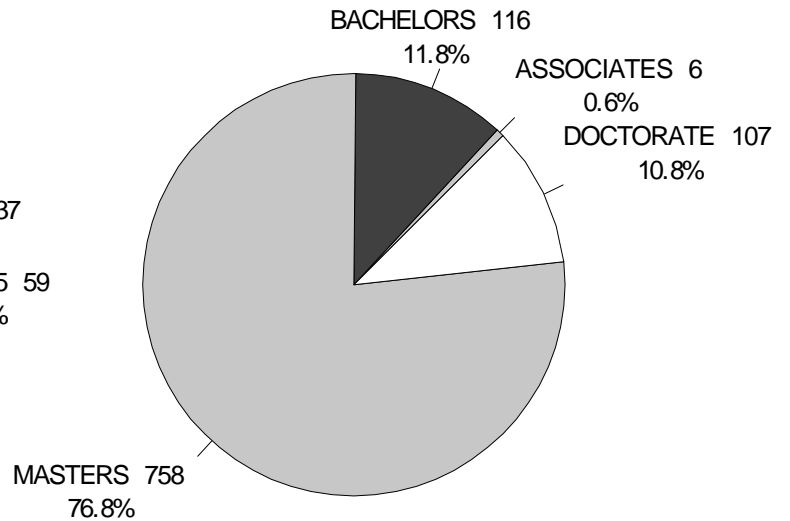
**ETHNICITY**



**AGE**



**HIGHEST DEGREE EARNED**



SOURCE: CBM008, 12/16/97

Includes both tenure-track and adjunct faculty

## FULL-TIME FACULTY – FALL 1997

	WHITE	BLACK	HISPANIC	OTHER	TOTAL
<b>FEMALE</b>	138 31.2%	10 2.3%	35 7.9%	3 0.7%	186 42.0%
<b>MALE</b>	201 45.4%	5 1.1%	44 9.9%	7 1.6%	257 58.0%
<b>TOTAL</b>	339 76.5%	15 3.4%	79 17.8%	10 2.3%	443 100%

SOURCE: IPEDS-S, 11/5/97

Note: Percents are percents of total

## FACULTY RANK – FALL 1997

RANK	NUMBER	PERCENT
<b>PROFESSOR</b>	142	14.4%
<b>ASSOCIATE PROFESSOR</b>	67	6.8%
<b>ASSISTANT PROFESSOR</b>	55	5.6%
<b>INSTRUCTOR</b>	109	11.0%
<b>ADJUNCT FACULTY</b>	614	62.2%
<b>TOTAL</b>	987	100.0%

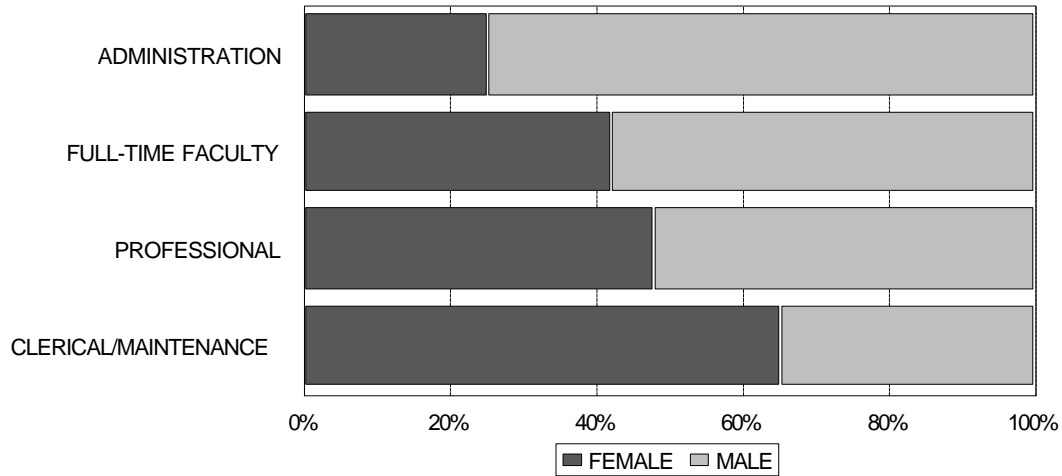
SOURCE: CBM008

Includes both tenure-track and adjunct faculty

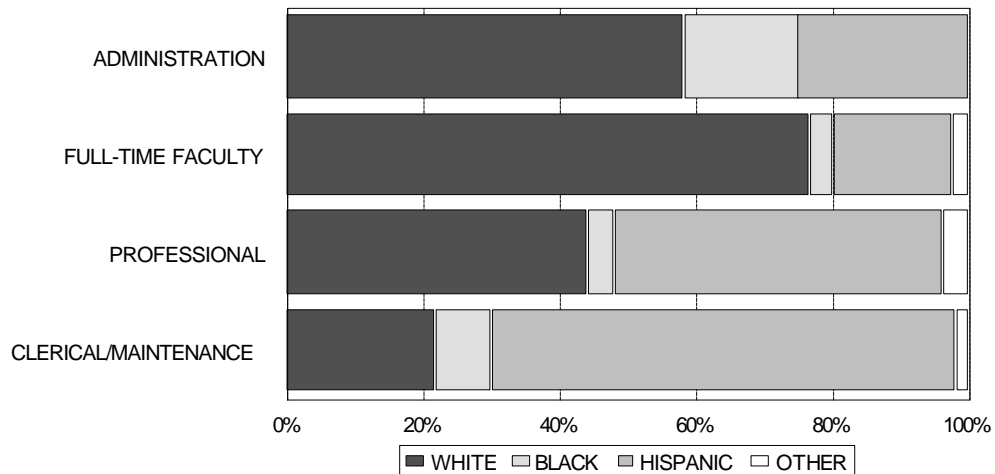
**FULL-TIME EMPLOYEE PROFILE – GENDER & ETHNICITY FALL 1997**

TYPE	WHITE	BLACK	HISPANIC	OTHER	FEMALE	MALE	TOTAL
<b>Administrators</b>	7 58.3%	2 16.7%	3 25.0%	0 0.0%	3 25.0%	9 75.0%	12 100%
<b>Tech/Clerical/ Maintenance</b>	55 21.6%	22 8.6%	173 67.8%	5 2.0%	167 65.5%	88 34.5%	255 100%
<b>Full-time Faculty</b>	339 76.5%	15 3.4%	79 17.8%	10 2.3%	186 42.0%	257 58.0%	443 100%
<b>Professional</b>	22 44.0%	2 4.0%	24 48.0%	2 4.0%	24 48.0%	26 52.0%	50 100%
<b>TOTAL</b>	423 55.7%	41 5.4%	279 36.7%	17 2.2%	380 50.0%	380 50.0%	760 100%

**EMPLOYMENT BY GENDER & CLASSIFICATION FALL 1997**



**EMPLOYMENT BY ETHNICITY & CLASSIFICATION FALL 1997**



SOURCE: IPEDS-S, 11/5/97

**CONTENTS – FINANCIAL PROFILE**

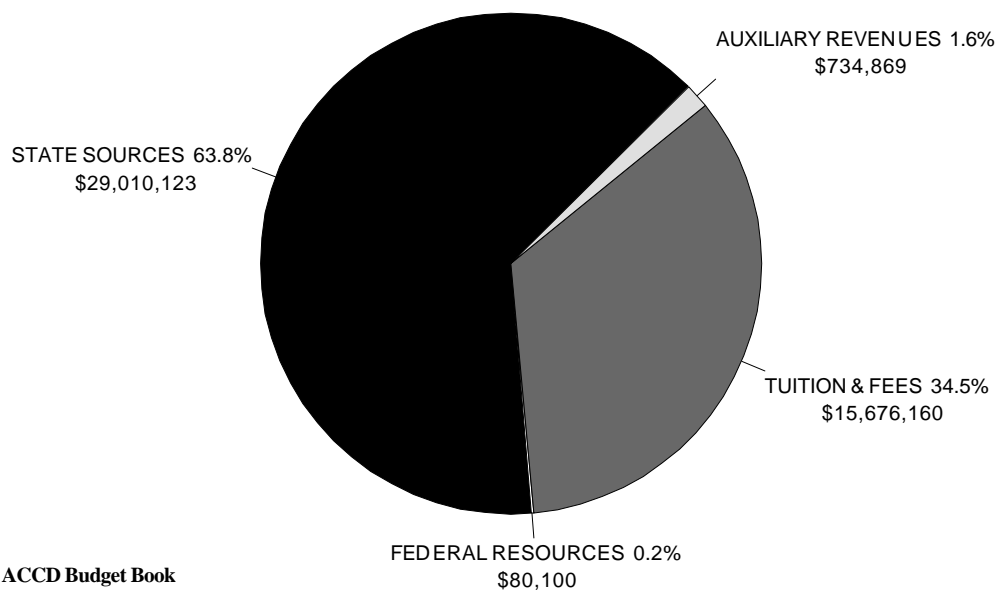
Tuition and Fees 1997-98 ..... 54  
Revenues 1997-98..... 54  
Revenue Budget ..... 55  
Expenditure Budget ..... 55

ACCD 1997-98 TUITION & FEES \*

SEMESTER HOURS TAKEN	TEXAS RESIDENTS				NON-TEXAS RESIDENT/INTERNAT'L STUDENTS	
	IN-DISTRICT		OUT-OF-DISTRICT		TUITION	GEN FEE
	TUITION	GEN FEE	TUITION	GEN FEE		
1 - 6	\$120	\$40	\$230	\$40	\$460	\$40
7	168	45	322	45	644	45
8	192	45	368	45	736	45
9	216	45	414	45	828	45
10	240	45	460	45	920	45
11	264	45	506	45	1012	45
12	288	45	552	45	1104	45
13	312	45	598	45	1196	45
14	336	45	644	45	1288	45
15	360	45	690	45	1380	45
16	384	45	736	45	1472	45
17	408	45	782	45	1564	45
18	432	45	828	45	1656	45
19	456	45	874	45	1748	45
20	480	45	920	45	1840	45
21	504	45	966	45	1932	45

\*As of Fall 1997 Semester

1997-98 SAN ANTONIO COLLEGE BASE REVENUES



SOURCE: 1997-98 ACCD Budget Book

## SUMMARY OF REVENUE FOR 1997-98

<b>SAN ANTONIO COLLEGE REVENUES</b>	
<b>State Sources</b>	<b>\$29,086,755</b>
<b>Federal Sources</b>	<b>\$80,100</b>
Tuition	\$13,126,854
Lab & Other Fees	2,557,525
Instructional Technology Fees	589,370
General Fees	1,804,061
<b>Total Tuition and Fees</b>	<b>\$18,077,810</b>
<b>Other Income</b>	<b>\$3,000</b>
<b>Total Educational &amp; General Revenue</b>	<b>\$47,247,665</b>
<b>Auxiliary Enterprises</b>	<b>\$893,369</b>
<b>GRAND TOTAL REVENUES</b>	<b>\$48,141,034</b>

SOURCE: 1997-98 ACCD Budget Book

## SUMMARY OF EXPENDITURES FOR 1997-98 BUDGET

<b>SAN ANTONIO COLLEGE EXPENDITURES</b>	
<b>EDUCATIONAL AND GENERAL:</b>	
Instruction	\$31,288,430
Public Service	124,626
Academic Support	3,931,201
Student Services	3,951,866
Institutional Support	8,260,757
Operation and Maintenance of Plant	4,556,506
Scholarships and Fellowships	736,371
Lapsed Salaries Adjustment	0
<b>Total Educational &amp; General Expenditures</b>	<b>\$52,849,757</b>
<b>Auxiliary Enterprise Expenditures</b>	<b>\$306,472</b>
<b>MANDATORY TRANSFERS FOR:</b>	
Texas Public Education Grants	726,633
Supplemental Education Opportunity Grants	195,160
<b>TOTAL UNRESTRICTED CURRENT FUNDS</b>	<b>\$54,078,022</b>
<b>TOTAL EXPENDITURES AND TRANSFERS</b>	<b>\$54,078,022</b>

SOURCE: 1997-98 ACCD Budget Book