

---

**San Antonio College**

---

# **2001-2002 FACT BOOK**

---

Prepared by Office of  
Institutional Effectiveness

SEPTEMBER 2002

---

*Original Cover Design by Rudy Lopez*

## SAC FACT BOOK CONTENTS

Introduction .....	v
--------------------	---

### COLLEGE PROFILE

#### OVERVIEW

History .....	2
Mission Statement.....	3
Outstanding Former Students .....	4
Certificate & Degree Programs.....	5
Accreditation and Affiliations.....	9

#### ORGANIZATIONAL CHARTS

San Antonio College .....	10
Arts & Sciences; Professional & Technical Education.....	11
Evening, Weekend & Distance Education; Learning Resource Center and Counseling; Continuing Education and Workforce Dev .....	12

#### DIVISIONS

Arts & Sciences .....	13
Professional & Technical Education.....	13
Continuing Education and Workforce Development.....	14
Evening, Weekend & Distance Education.....	14
Library (Learning Resource Center) and Counseling Center.....	15

#### INSTITUTIONAL RESOURCES

Instructional Technologies.....	17
Learning Resource Center.....	20
Student Learning Assistance Center .....	21

### STUDENT PROFILE

#### GENERAL INFORMATION

Gender, Ethnicity, Age, Major, Hours Enrolled, Day vs. Evening.....	23
Top Ten:	
Academic Majors .....	24
Vocational Majors.....	24
Feeder High Schools .....	24
Zip Codes of Residence .....	25
Counties of Residence.....	25
States of Residence .....	25
Student Objective in Attending San Antonio College .....	26
Intended Duration of Enrollment .....	26
Previous College Experience .....	26
Student Employment Status.....	26
Financial Aid and Scholarship Awards.....	27

#### ACADEMIC ACHIEVEMENT

Grade Distribution, Fall 2001 .....	28
Grade Distribution Trends, Fall Semesters 1997-2001.....	28
Fall to Fall Retention by Ethnicity, 1994-1995 to 1999-2000 .....	29

Retention of First-Time, Full-Time Freshmen by Ethnicity, Fall 2000 .....	29
Graduates by Degrees & Certificates Awarded, 2000-2001 .....	30
Graduates by Ethnicity, 2000-2001 .....	30
Graduates by Degrees & Certificates Awarded, 1996-1997 to 2000-2001 .....	30
Graduates by Ethnicity, 1996-1997 to 2000-2001 .....	30
TASP Results by Institution, 1999-2000 .....	31
TASP Pass Rates – Retake Attempts by Ethnicity, 1999-2000 .....	31
TASP Pass Rates – Retake Attempts by Section, 1998-1999 To 1999-2000 .....	31

**ENROLLMENT TRENDS**

Credit Programs:

Fall Semesters 1992-2001 and Spring Semesters 1993-2002 .....	33
Summer I Session 1993-2002 & Summer II Sessions 1992-2001 .....	34
By Classification Fall Semesters 1997-2001 (Summary Statistics) .....	35
Gender .....	36
Ethnicity.....	36
Division .....	37
Part-Time vs. Full-Time .....	37
Day vs. Evening.....	38
Residency.....	38
Age.....	39
First-Time Students.....	39
Contact Hours, Fall & Spring Semesters 1997-2002 .....	40
Contact Hours, Summers I & II 1997-2001 .....	40

Distance Education:

Highlights .....	41
Registrations, Fall Semesters 1997-2001 .....	42

Developmental Education:

Enrollment Fall Semesters 1997-2001 .....	44
Trends in Developmental English.....	45
Trends in Developmental Math .....	45
Trends in Developmental Reading.....	45

Continuing Education:

Highlights .....	46
Contracts.....	47
Contract Companies.....	47
Total Enrollment 1992-1993 to 2001-2002 .....	48
Tuition/Fee Revenue 1992-1993 to 2001-2002 .....	48
Unduplicated Number of Students Enrolled at Any Time During Academic Year by Type of Major	
1997-1998 to 1999-2000.....	48
Reimbursable Headcount by Quarter 1997-2001.....	49
Reimbursable Contact Hours by Quarter 1997-2001.....	49
Reimbursable Classes by Quarter 1997-2001 .....	49

<b>STATEWIDE TRENDS</b>	
A COMPARISON OF SAN ANTONIO COLLEGE & STATEWIDE ENROLLMENT TRENDS: TOTAL ENROLLMENT Unduplicated Number Of Students Enrolled At Any Time During Academic Year	
By Type of Major, 1997-1998 to 1999-2000	51
By Type Of Major, 1997-1998 to 1999-2000 (Bar Graph)	52
By Ethnicity and Gender, 1999-2000	53
Unduplicated Number of Credit Students by Number of Hours Enrolled, 1999-2000 (San Antonio College)	54
Enrollment by Special Populations, 1999-2000	55
FIRST-TIME IN COLLEGE ENROLLMENT	
First-Time-in-College Students by Special Populations, 1999-2000	55
First-Time-in-College Students Receiving Remediation, Fall 1999	
By Gender	56
By Ethnicity	56
By Full-Time/Part-Time Status	56
COHORT PROGRESSION ANALYSIS OF FTIC STUDENTS BY TYPE OF MAJOR	
Fall Semester, 1995	57
Fall Semester, 1996	57
Fall Semester, 1997	57
<b>PERSONNEL PROFILE</b>	
FACULTY	
Faculty Profile (Gender, Ethnicity, Age, Highest Degree Earned, Contact Hrs & Sections Taught), Fall 2001	59
Full-Time Faculty, Fall 2001	60
Faculty Rank, Fall 2001	60
FULL-TIME EMPLOYEES	
Full-Time Employee Profile, Fall 2001	61
By Gender & Classification, Fall 2001	61
By Ethnicity & Classification, Fall 2001	61
<b>FINANCIAL PROFILE</b>	
Tuition and Fees 2001-2002	63
Base Revenues 2001-2002	63
Summary of Revenue for 2001-2002	64
Summary of Expenditures for 2001-2002	64

## INTRODUCTION

The San Antonio College Fact Book provides general statistical information about the College which may be useful to those engaged in planning, preparing reports, writing grant proposals, or other endeavors within the College.

It is important for the reader to be aware that data presented in this publication may differ slightly from statistics found in other College and District reports. Such variances may result from differences in the source of information used, the date on which the report was generated, or the reporting period included in the report. For these reasons, the source of the information in each table and graph is cited. Trends should be tracked using identical sources each semester.

**CONTENTS – COLLEGE PROFILE**

OVERVIEW

History ..... 2

Mission Statement..... 3

Outstanding Former Students ..... 4

Certificate & Degree Programs..... 5

Accreditation and Affiliations..... 9

ORGANIZATIONAL CHARTS

San Antonio College ..... 10

Arts & Sciences; Professional & Technical Education..... 11

Evening, Weekend & Distance Education; Learning Resource Center and Counseling; Continuing Education & Workforce Dev ..... 12

DIVISIONS

Arts & Sciences ..... 13

Professional & Technical Education..... 13

Continuing Education and Workforce Development ..... 14

Evening, Weekend & Distance Education ..... 14

Library (Learning Resource Center) and Counseling Center..... 15

INSTITUTIONAL RESOURCES

Instructional Technologies..... 17

Learning Resource Center..... 20

Student Learning Assistance Center ..... 21

**HISTORY**

San Antonio College was established as University Junior College in September 1925, under the auspices of the University of Texas. The following year control of the college was transferred to the San Antonio Independent School District and the name was changed to San Antonio Junior College. Following passage of state legislation authorizing junior college districts, the San Antonio Union Junior College District was formed in 1945 and in 1946 assumed control of San Antonio Junior College and its sister college, St. Philip's Junior College. In 1948, San Antonio Junior College's name was changed to San Antonio College, and in 1951, the college was moved to its present location on San Pedro Avenue. Five hundred students were enrolled at that time. The Southern Association of Colleges and Schools granted accreditation to the college in 1955.

In the late 1960s San Antonio College became a comprehensive community college by expanding offerings in Professional and Technical courses and by assuming the San Antonio Independent School District's continuing education program. The name of the college district was changed to San Antonio Community College District in 1978 and in 1982 the district was renamed the Alamo Community College District.

In support of the mission of the Alamo Community College District, San Antonio College responds to Bexar County's diverse community by providing high quality general education, liberal arts and sciences, career education, continuing education and developmental education. The college has an average semester enrollment of 21,000 credit students and an average annual enrollment of 16,000 other-than-credit students. San Antonio College is the largest single-campus community college in Texas and one of the largest in the United States.

**MISSION STATEMENT**

**San Antonio College – responsive education through excellence, accessibility and diversity.** San Antonio College is a public community college, which provides for and supports the educational and lifelong learning needs of a multicultural community. As a leader in education, San Antonio College is committed to excellence in helping students reach their full potential by developing their academic competencies, critical thinking skills, communication proficiency, civic responsibility and global awareness.

San Antonio College fulfills its mission by offering the following:

- ❖ Transfer education designed to provide students with the first two years of the bachelor's degree.
- ❖ General education courses in the liberal arts and sciences to support all college degree programs.
- ❖ Career preparation provided through a wide range of programs to prepare students for immediate employment.
- ❖ Developmental studies for students needing to bring their basic skills to a level appropriate for college work.
- ❖ Continuing education to offer a variety of training, licensure and professional programs.
- ❖ Academic support services that include a comprehensive learning resource center and basic skills activities that complement instruction.
- ❖ Student support services to provide assessment, advising, counseling, tutoring, financial assistance, and social and cultural activities for all students, including those with special needs.
- ❖ Promotion of cross-cultural understanding and appreciation through instructional and social activities that contribute to cultural awareness and interaction.
- ❖ Involvement of business, industry and professional groups in planning and revising educational programs to meet workforce needs.
- ❖ An environment conducive to learning through an attractive physical campus and wellness-oriented programs and services.
- ❖ Continuous assessment of programs and services and the utilization of results for improvement.
- ❖ Operation of the college within available fiscal resources to provide accountability to taxpayers of the Alamo Community College District.



## OUTSTANDING FORMER STUDENTS

Henry B. Gonzalez (Congressman).....	1982-83
Blair Reeves (Judge).....	1983-84
Albert Bustamante (Congressman).....	1984-85
Dr. William Kirby (State Commissioner Of Education) .....	1985-86
Capt. Larry Pearson (Navy Test Pilot, Former Blue Angels Commander) .....	1986-87
Lisa Brown (Archaeologist) .....	1987-88
Edward Prado (Judge) .....	1987-88
Dr. Jerome Weynand (College President) .....	1987-88
James R. Vasquez (Public School Superintendent).....	1988-89
Sarah Garrahan (Judge).....	1988-89
Frank Gonzalez (Oceanographer).....	1989-90
Nancy Klepper (Public School Educator).....	1989-90
Diane Gonzales (Journalist).....	1990-91
Bill Hayden (Founder/CEO CompuAdd) .....	1990-91
Jesse Trevino (Artist) .....	1991-92
Patsy Torres (Entertainer).....	1992-93
Dr. Felix D. Almaraz (University Professor).....	1993-94
William Sinkin (Banker) .....	1993-94
Dr. Judith Ann Loreda (College Administrator) .....	1994-95
Steven C. Hilbig (Bexar County District Attorney) .....	1994-95
Dr. Robert L. Jimenez (Psychiatrist) .....	1995-96
Dr. Leo Sayavedra (University Administrator) .....	1995-96
Francis R. Scobee (Challenger Astronaut) .....	1995-96
Tino Duran (Publisher of <i>La Prensa</i> ) .....	1996-97
Al A. Philippus (San Antonio Chief Of Police).....	1996-97
Dr. Cynthia G. Broderick (Public School Educator) .....	1997-98
Dr. Jesse T. Zapata (University Administrator).....	1997-98
Marinella Garcia-Murillo (Community Relations Specialist) .....	1998-99
Dr. James V. McLean (Veterinarian) .....	1998-99
Dr. Martin Basaldua (Physician) .....	1999-00
Ciro D. Rodriguez (Congressman) .....	1999-00
Oscar G. Hernandez (Community Services Administrator) .....	2000-01
Dr. Rodolpho Sandoval (University Administrator).....	2000-01
Sara Kleban Radin (Judge) .....	2001-02

## CERTIFICATE AND DEGREE PROGRAMS

### ARTS & SCIENCES

AA DEGREES: ASSOCIATE IN ARTS IN AMERICAN SIGN LANGUAGE  
 ASSOCIATE IN ARTS IN ARCHITECTURE  
 ASSOCIATE IN ARTS IN ART  
 ASSOCIATE IN ARTS IN BUSINESS ADMINISTRATION  
 ASSOCIATE IN ARTS IN CHILD DEVELOPMENT  
 ASSOCIATE IN ARTS IN CRIMINAL JUSTICE  
 ASSOCIATE IN ARTS IN DRAMA  
 ASSOCIATE IN ARTS IN FINE ARTS  
 ASSOCIATE IN ARTS IN GEOGRAPHICAL INFORMATION SYSTEMS  
 ASSOCIATE IN ARTS IN JOURNALISM  
 ASSOCIATE IN ARTS IN LIBERAL ARTS  
 ASSOCIATE IN ARTS IN MUSIC  
 ASSOCIATE IN ARTS IN PHOTOGRAPHY  
 ASSOCIATE IN ARTS IN PSYCHOLOGY  
 ASSOCIATE IN ARTS IN SOCIAL SERVICES  
 ASSOCIATE IN ARTS IN SPEECH  
 ASSOCIATE IN ARTS IN TEACHER EDUCATION

AS DEGREES: ASSOCIATE IN SCIENCE  
 ASSOCIATE IN SCIENCE IN ENGINEERING

DISCIPLINES:

Accounting	German	Photography
Anthropology	Italian	Physical Education
Anatomy	Japanese	Political Science
Architecture	Latin	Physics
Art	Spanish	Psychology
Biological Sciences	Geography	Reading
Business	Geographic Information Systems	Social Work
Chemistry	Geology	Sociology
Communications	Health	Speech
Computer Science	History	Theatre
Earth Sciences	Humanities	Teaching Academy Preparation
Economics	Interdisciplinary Studies	Visual, Technical & Graphic Arts
Education	Journalism	
Engineering	Kinesiology	
English	Mathematics	
Fine Arts	Mental Health	
Foreign Languages	Music	
American Sign Language	Nutrition	
French	Philosophy	

## CERTIFICATE AND DEGREE PROGRAMS

### PROFESSIONAL & TECHNICAL

DEPARTMENT	PROGRAM	AWARD
ALLIED HEALTH TECHNOLOGIES	Dental Assisting Technology	AAS, CERT
	Medical Assisting Technology	AAS, CERT
	Medical Office Administrative Assistant	CERT
	Funeral Director	CERT
	Mortuary Science	AAS
CHILD DEVELOPMENT	Child Care Administration	CERT
	Child Development	AAS, CERT
	Child Development Associate	CERT
	Teacher Assistant I & II	CERT
COMPUTER INFORMATION SYSTEMS TECHNOLOGY	Computer Database Specialist	AAS, CERT
	Computer Database Technician	CERT
	Computer Network Administration	AAS
	Computer Network Technician	CERT
	Computer Programming	AAS, CERT
	Oracle	CERT
ADMINISTRATIVE COMPUTER TECHNOLOGY/ COURT REPORTING	Accounting Technology	AAS, CERT
	Administrative Assistant	AAS
	Administrative Systems Technician	CERT
	Benefits & Compensation Manager	CERT
	Business Communications	CERT
	Computer Assistant	CERT
	Computer-Aided Transcription	AAS
	Computer Help Desk Specialist	AAS, CERT
	Computer Help Desk Technician	CERT
	Computer Services Specialist	CERT
	Court Reporting	CERT
	Court Reporting – Rapid Text Entry	CERT
	Court Reporting – Transcriptionist/Scopist	CERT
	Employment Specialist	CERT
	Human Resources Assistant	CERT
	Legal Secretarial Assistant	CERT
	Medical Transcriptions Specialist	CERT
	Microcomputer/Data Entry Operations	CERT
	Real-Time Medical Reporting	CERT
	Records Management	AAS, CERT
Software Specialist	CERT	
Training Specialist	CERT	

<b>DEPARTMENT</b>	<b>PROGRAM</b>	<b>AWARD</b>
ENGINEERING TECHNOLOGY	Basic DC/AC	CERT
	Basic Electronics	CERT
	Basic Semiconductor	CERT
	Civil Engineering Tech. Specialist	AAS
	Communications Electronics	AAS
	Digital Fundamentals	CERT
	Electronics	CERT
	Engineering Technology Specialist	AAS
	Facility Engineering Tech I	CERT
	Facility Operation Tech I	CERT
	Geographic Info Systems	AAS/CERT
	Industrial Electronics	AAS, CERT
	Occupational Safety & Health Management	AAS, CERT
	Occupational Safety & Health Technician I & II	CERT
	Surveying Engineering	AAS/CERT
	Surveying Technician I & II	CERT
	Computer-Aided Drafting-Engineering Option	AAS
	Computer-Aided Drafting-General Option	AAS
	Computer-Aided Drafting Operations	CERT
	Computer Electronics Technology	AAS
	GRAPHIC ARTS	Interactive Graphics Option
Print Graphics Option		AAS
Sequential Graphics Option		AAS
INTERPRETER TRAINING/AMERICAN SIGN LANGUAGE	American Sign Language-Deaf Support Specialist Option	AAS
	Sign Language Interpreter Option	AAS
MENTAL HEALTH TECHNOLOGY	Drug & Alcohol Counselor	AAS, CERT
BUSINESS	Banking & Financial Services	AAS
	Business Law Paralegal	CERT
	Business Management	AAS, CERT
	Financial Management	AAS, CERT
	Financial Services Industry	CERT
	Human Resources Management	AAS, CERT
	International Business	AAS, CERT
	Labor Studies	CERT
	Legal Assisting	AAS
	Marketing	CERT
	Mortgage Banking	AAS, CERT
	Operations Management	CERT
	Personal Injury Paralegal	CERT
	Public Administration	AAS
	Real Estate Management	AAS, CERT
Small Business Management	CERT	

<b>DEPARTMENT</b>	<b>PROGRAM</b>	<b>AWARD</b>
RADIO-TV-FILM	Radio-Television-Film	AAS
NURSING	Nursing (Career Mobility-LVN to RN)	AAS
	Nursing (Generic Program)	AAS
PROTECTIVE SERVICES	Chemical Dependency Counseling	AAS
	Criminal Justice-Correctional Science	AAS
	Criminal Justice-Law Enforcement	AAS, CERT
	Emergency Medical Services	AAS
	EMT-Basic	CERT
	EMT-Intermediate	CERT
	EMT-Paramedic	CERT
	Fire Fighter (Basic)	CERT
	Fire and Arson Investigation	AAS, CERT
	Fire Inspector	CERT
Fire Science	AAS	

**ACCREDITATION & AFFILIATIONS**

San Antonio College is accredited by the Commission on Colleges of the Southern Association of Colleges and Schools to award associate degrees.

The Mortuary Science Program is accredited by the American Board of Funeral Service Education.

The Dental Assisting Program is accredited by the American Dental Association Commission on Dental Accreditation.

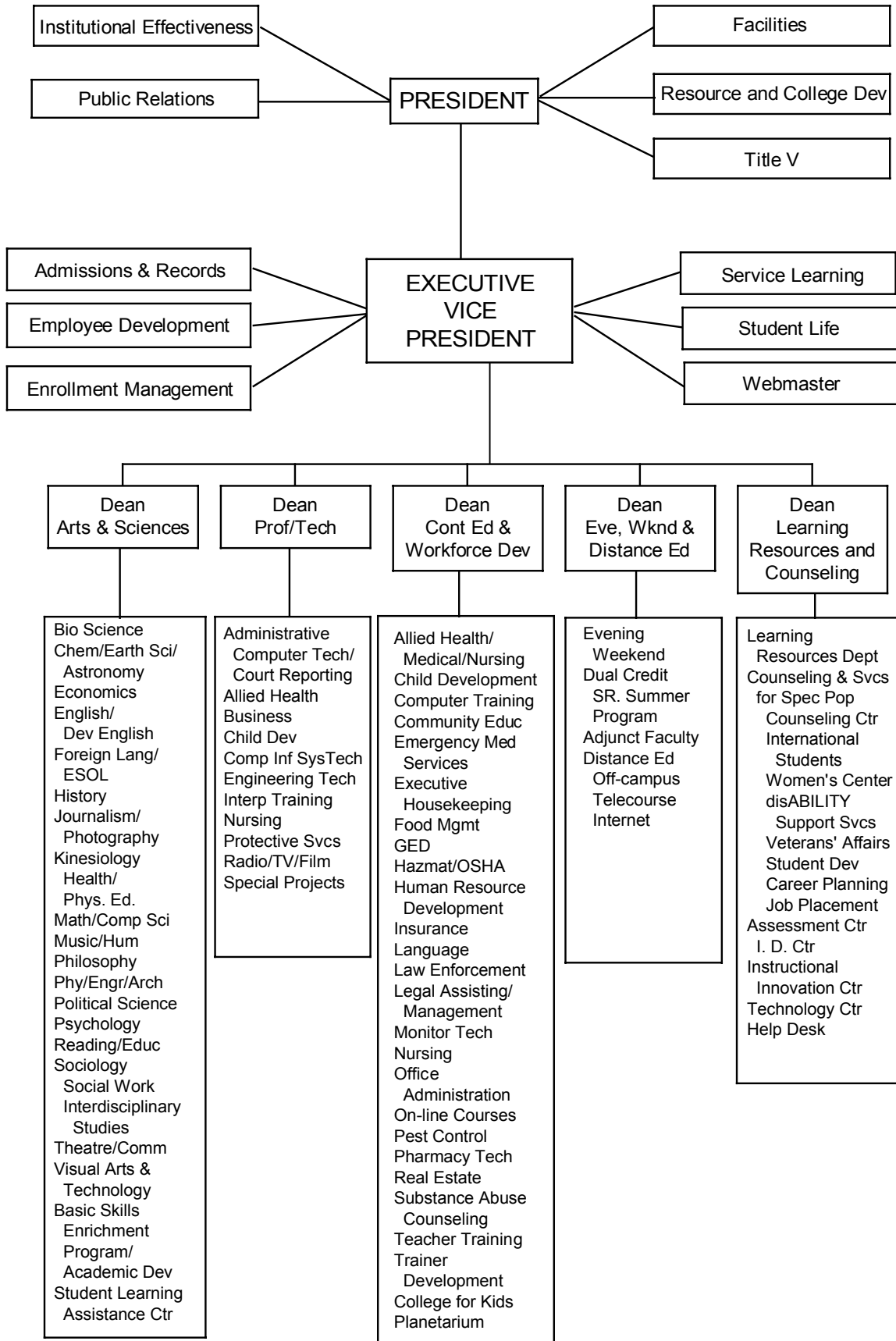
The Medical Assisting Program is accredited by the Commission on Accreditation of Allied Health Education Programs (CAAHEP), on recommendation of the Committee on Accreditation for Medical Assistant Education.

The Department of Nursing is accredited by the National League for Nursing Accrediting Commission.

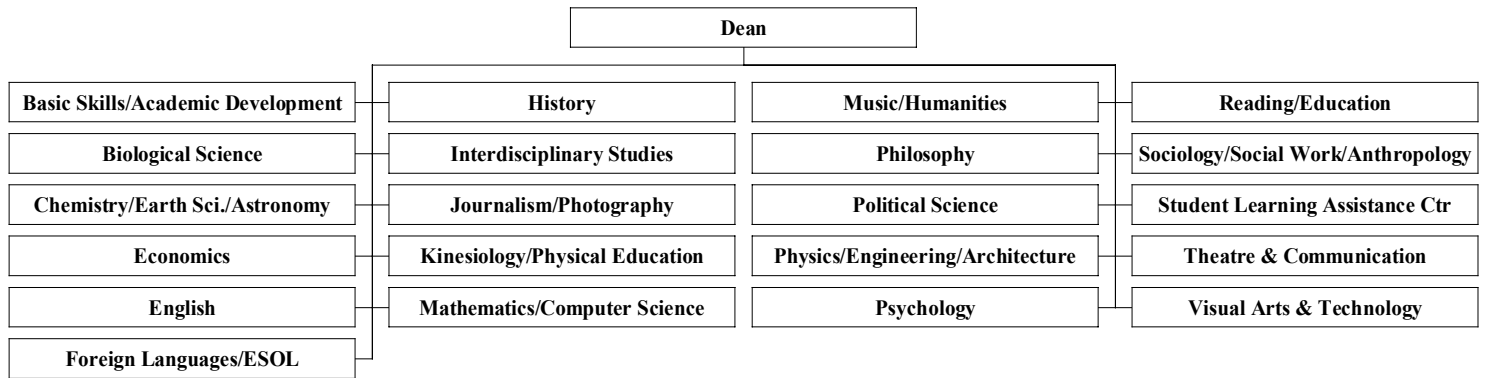
The Fire Science Program is accredited by the International Fire Service Accreditation Congress – 1998.

Students who wish to view the school's accreditation and licensing bodies documentation, may inquire at the reference desk of the Learning Resource Center in the Moody Learning Center.

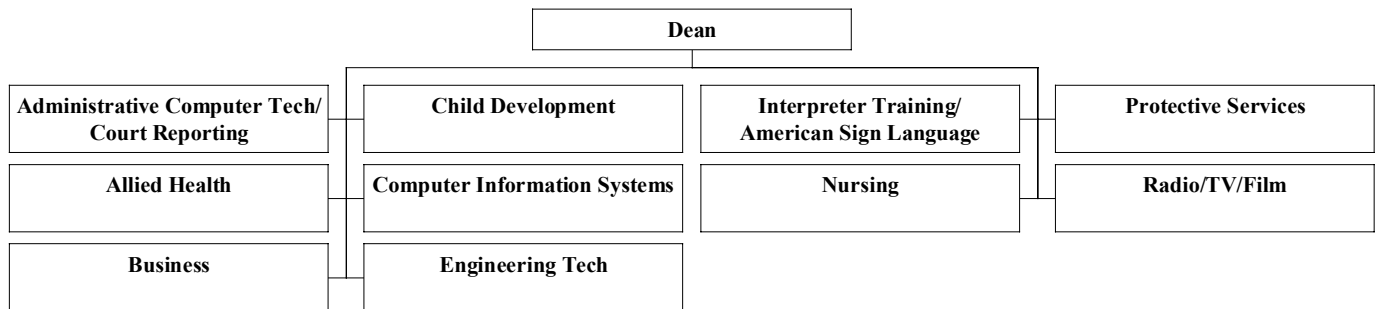
**SAN ANTONIO COLLEGE 2001-2002 ORGANIZATIONAL CHART**



## ARTS & SCIENCES

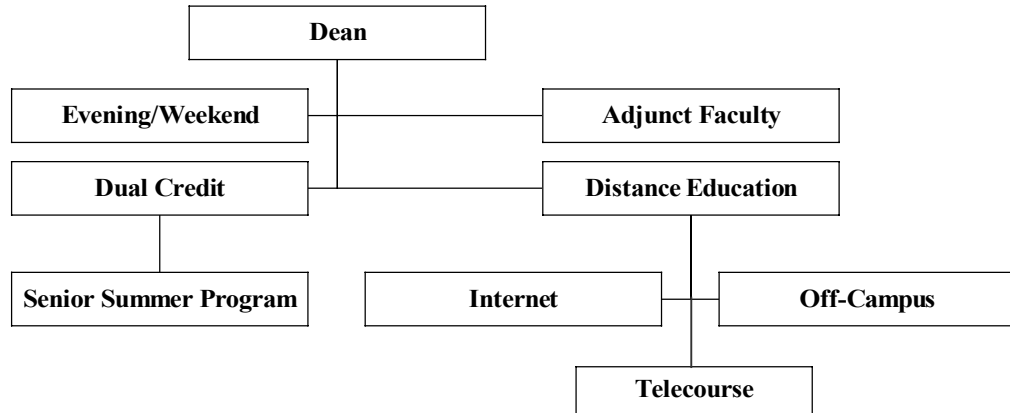


## PROFESSIONAL & TECHNICAL EDUCATION

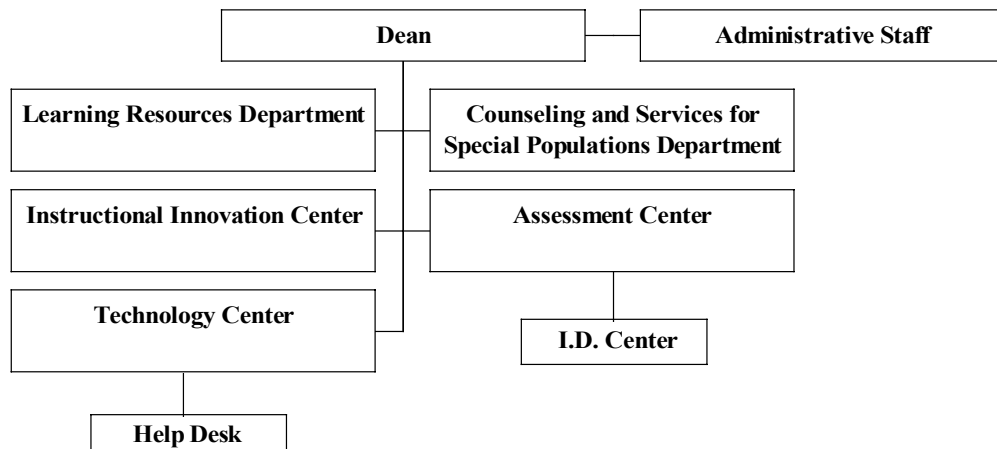




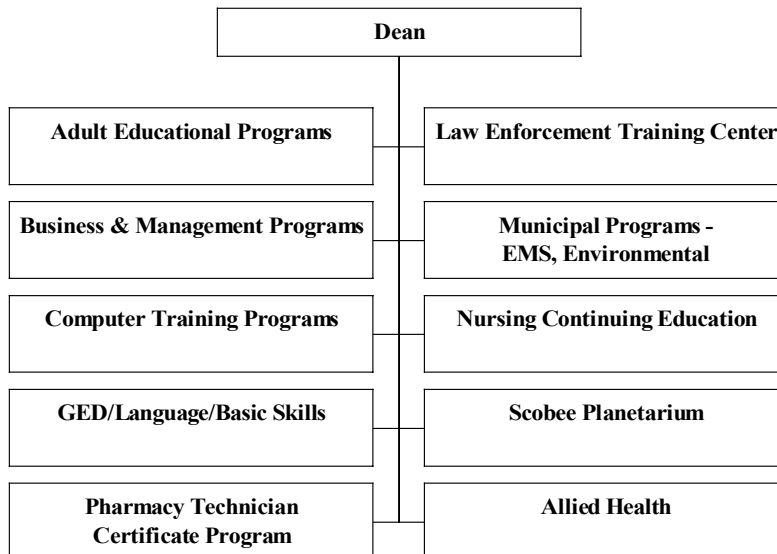
### EVENING, WEEKEND & DISTANCE EDUCATION



### LEARNING RESOURCE CENTER AND COUNSELING



### CONTINUING EDUCATION AND WORKFORCE DEVELOPMENT



## DIVISIONS

### Arts and Sciences

San Antonio College offers a comprehensive Liberal Arts Curriculum designed to satisfy the requirements of the first two years of a baccalaureate degree. These general and transfer Arts and Science courses are offered by the following areas:

Accounting	English	Nutrition
Anthropology	Fine Arts	Philosophy
Anatomy	Foreign Languages	Photography
Architecture	Geography	Physical Education
Art	Geographical Info Systems	Physics
Biological Sciences	Geology	Political Science
Business	Health	Psychology
Chemistry	History	Reading
Communications	Humanities	Social Work
Computer Science	Interdisciplinary Studies	Sociology
Earth Sciences	Journalism	Speech
Economics	Kinesiology	Teaching Academy Preparation
Education	Mathematics	Theatre
Engineering	Mental Health	Visual Arts & Technical Graphics

### Professional and Technical Education

Programs are provided for purposes of job or career entry, career development and change; industry/business start-up and development; transfer to four-year degree programs; and technical services to industry. All of the programs are linked with the employing community through active advisory committees, cooperative or part-time work experience, direct placement and career development activities, as well as the sharing of work-site laboratories and equipment. San Antonio College offers programs in:

Accounting Technology	Engineering Technology
Administrative Assistant	Financial Management
American Sign Lang/ Deaf Support Specialist	Fire and Arson Investigation
American Sign Lang/ Interpreter Option	Fire Science
Banking and Financial Services	Geographic Information Systems
Business Management	Graphic Arts
Child Development	International Business
Chemical Dependency Counseling	Labor Studies
Computer-Aided Drafting and Design Technology	Legal Assisting
Computer Database Specialist	Medical Assisting
Computer Network Administration	Microcomputer Data Entry
Computer Programming	Mortgage Banking
Court Reporting	Mortuary Science
Criminal Justice	Nursing
Dental Assisting	Occupational Safety and Health Technology
Drug/Alcohol Abuse Counseling	Public Administration
Electronics Technology	Radio-Television-Broadcasting
Emergency Medical Services	Real Estate Management
	Records Management
	Teacher Assistant

## Continuing Education and Workforce Development

Continuing Education provides nontraditional educational opportunities to meet the needs of students and employers in the San Antonio area. Professional and Technical short courses are offered for business, industry, political science and professional groups; seminars and workshops are developed to complement and supplement in-house training and staff development programs. These non-traditional courses are developed in collaboration with college faculty and community experts. Other-than-credit courses and activities are offered on campus and throughout the community with dates and times arranged for the convenience of the students. Continuing Education assists departments and divisions by serving as an outreach mechanism for channeling interested students into appropriate credit programs within the college.

Certification programs are offered for managers, secretaries, law enforcement officers, private security guards, emergency medical technicians, pharmacy technicians, real estate agents, insurance agents, executive housekeepers, pest control applicators, payroll professionals and health care personnel. Community service programs include conversational languages, personal development and life skills courses, summer courses for children and planetarium programs for the general public. Parallel and integrated programs include classes in General Education Development (GED) and English as a Second Language skill.

## Evening, Weekend and Distance Education

Evening course offerings include regular academic courses leading to college degrees and certificate programs, developmental education courses, and other courses planned to be of community service and vocational interest to adults. Courses are offered if there is sufficient demand. Late afternoon, evening, weekend and distance education classes (off-campus courses and telecourse/Internet/interactive courses) are scheduled for the convenience of students. Dual Credit courses are also offered to students from 12 school districts; and, a "Senior Summer Program" is scheduled specifically for graduating seniors for several of the "Educational Partnership" schools.

### Distance Education

The Distance Education Center at San Antonio College provides innovative instructional delivery methods affording students access to college through flexible scheduling. Within the framework of the college mission and goals, Distance Education works with all academic departments, the local business community, and the cities of Seguin, New Braunfels and Kerrville to develop educational responses to newly identified needs.

Traditional courses, as well as telecourses (courses broadcast by television) and Internet courses, are available to students in and out of Bexar County. These innovative instructional delivery methods are used to respond to the non-traditional educational needs within our community. Distance Education offers courses at area high schools, military bases, Citicorp, and the cities of Seguin, New Braunfels and Kerrville. *Internet courses are available to all local students as well as out-of-state and out-of-the country students.*

Distance learners can access the following online student services: online counseling, online tutoring, online library services, an online self-evaluation to determine if Internet instruction is appropriate for them, and 24/7 technical support.

A new *Internet Skills Center*, funded by the Department of Education is also available to all SAC students to facilitate Internet learning. All San Antonio College students can access three instructional modules, at no cost to obtain skills in: 1) basic computer skills; 2) web-based research skills; and 3) Internet course readiness skills to successfully complete Internet courses.

## **Library (Learning Resource Center) and Counseling Center**

The Library, located in the Moody Learning Center, is a vital technologically advanced center of learning and exploration for students, staff, faculty and the community. Supplementing the book, microfilm and government document collection of approximately 200,000 titles are 3,500 current periodical subscriptions and more than 7,000 videotapes, computer files, and sound recordings.

Informational resources owned by the Library, as well as by the other ACCD college libraries, are listed in the online catalog. The catalog is accessible from the Library's homepage [<http://www.accd.edu/sac/lrc/>], as are additional resources; these include the World Wide Web and numerous databases and indexes, many of which provide the full text to magazine, journal and newspaper articles. The Library provides the use of more than fifty public computer stations where users may access these resources. SAC students, staff, and faculty may also access all web-based databases and indexes off campus through the Library's proxy server.

Also available through the Library's homepage are electronic forms that allow users to request Interlibrary Loan Materials and seek reference assistance through the "Ask a librarian" service. Remote access to the catalog, web-based databases and indexes, Interlibrary Loan, and on-line reference assistance enhances learning opportunities for all Library users, and is vital for Distance Education students.

The Library is equipped with two state-of-the-art electronic classrooms where librarians teach students search strategies and techniques for finding relevant information using print materials, the online catalog and databases, and the World Wide Web. The Audiovisual Center supports classroom instruction and campus activities through its equipment circulation, graphic and photographic services, and AV repair. The Student Multimedia Lab provides students with a facility for class-related design and production needs. The Educational Multimedia Center provides a contemporary studio, classroom video recordings, teleconferencing services, an editing station, and the means to broadcast telecourses directly to students' homes.

Through individual and group instruction, Librarians strive to reduce "library anxiety," increase student opportunities for academic success, and ensure that each student becomes an independent and life-long library learner.

## **Counseling Center**

### **Tech Prep**

San Antonio College is engaged in major technical and professional career preparation by providing continuity of learning and quality educational opportunities for all students. The Tech Prep/Associate Degree program is a significant component of this concept providing educational and career preparation in technical fields to high school students who will be the workforce of the future.

The concept of Tech Prep involves a sequence of knowledge and skills acquisition beginning in elementary school, linked with a guided, integrated high school plan of academic and technical subjects, which connects the student to the community college and the university. Articulation provides the avenue for high schools and community colleges to share a jointly developed competency-based, industry-validated curriculum without duplication or repetition. The Tech Prep curricula in high schools and colleges represent a rigorous body of knowledge and skills that will prepare a better-educated worker with advanced skills and the ability to apply these skills as the world of technology changes.

In collaboration with regional independent school districts, San Antonio College has developed Tech Prep Associate Degree programs in Child Development, Computer-Aided Drafting and Design, Criminal Justice/Law Enforcement, and Electronics. A new Memorandum of Understanding between the U.S. Navy and San Antonio College has been signed allowing high school students to earn articulated credit toward an associate degree in nuclear electronics, advanced electronics and computers.

## Transfer Center

In the Transfer Center, students may obtain degree plans, transfer guides for specific majors, and information about local Joint Admissions Agreements. Educational directories, university catalogs and World Wide Web resources are available for student use. Admissions applications and scholarship information are also available. Additionally, the center arranges student appointments for various university admissions representatives. The biannual Transfer Fair provides an opportunity for SAC students to meet with representatives of universities.

### **2+2 Degree Plans, Articulation Agreements and Joint Admission Agreements: Transferring to Four-Year Institutions**

San Antonio College operates in full compliance with the guidelines and policies set forth by the Texas Higher Education Coordinating Board. The Texas legislature has mandated that all Texas post-secondary institutions develop a core curriculum in accordance with the guidelines established and approved by the Coordinating Board and that all Texas public four-year institutions must accept the entire core curriculums of any public post-secondary institution as meeting the core curriculum of their institution. San Antonio College's core curriculum will meet the core curriculum of any Texas public university.

However, it benefits the four-year degree-seeking student to consult the Transfer Center concerning 2+2 degree plans or transfer guides, Joint Admission Agreements and Articulation agreements. Each institution can be unique in discipline requirements and specific in admission requirements. Without a determined degree plan that is compatible with the transfer institution a student may waste time, money and semester hours on courses not applicable to their major field of study. Counselors will clarify policy requirements, academic expectations and institutional characteristics.

2+2 Degree Plans are contractual educational terms that will be honored by a particular transfer institution contingent on academic standards, admission requirements and student performance.

Articulation Agreements are defined and signed agreements between San Antonio College and various institutions concerning the transfer of students. Each agreement is tailored to the academic criteria of the transfer institution.

Joint Admission Agreements are another form of articulation in which students sign an agreement at a designated university, which allows them to actively be a part of the university's community while attending San Antonio College. Upon completing, the prescribed degree plan and meeting the articulated requirements, they transfer. Courses are determined by the transfer institution.

**INSTITUTIONAL RESOURCES****Instructional Technologies**

The **Department of Instructional Technologies** was established to coordinate instructional technology initiatives at San Antonio College. The Department provides an official location to centralize information related to campus instructional technologies, faculty and staff training for all academic and administrative units, and Internet course development. It coordinates San Antonio College instructional technology activities with other organizations in the Alamo Community College District and the Virtual College of Texas. The Department of Instructional Technologies serves the college in the following areas:

**Instructional Technology Center**

The **Instructional Technology Center** was originally established as the Instructional Innovation Center under a Title III Grant and continues to provide training and assistance for faculty who want to enhance their instruction with new or innovative teaching techniques and technology. The Center provides a place for faculty to work with state-of-the-art equipment and software as well as obtain assistance and training with innovations such as, classroom presentations using computers and multimedia, computer-assisted instruction, infusion of the Internet and the World Wide Web into classroom assignments, video conferencing, and other techniques to improve learning and instruction. A certification program is provided for instructors who develop courses to be taught fully over the Internet.

The following equipment is available for faculty and staff use in the Instructional Innovation Center: Pentium PC and Macintosh computers with access to the Internet, E-mail, Advantage Financial Systems, and Student Information Systems. Additional equipment includes color laser and ink jet printers, image and text scanners, graphics tablets, camcorders, CD-ROM and DVD players and recorders, motion video capture card, VCR-TV microphones, LCD projectors, zip and super disk drives, digital cameras, Web cameras, film scanner, music keyboard, and videoconferencing equipment.

**Technology Training Program**

The **Technology Training Program** is provided for the faculty, staff, and administrators of San Antonio College. This program was designed to assist with the achievement of certain college goals and to increase efficiency and effectiveness through the infusion of technology into the college classroom and office settings. This free training is provided by way of monthly scheduled classes and on a walk-in basis.

**Multimedia and Presentations:**

Microsoft PowerPoint, Macromedia Authorware, Macromedia Director, Macromedia Flash, Adobe Premier Video Capture and Editing, Digital Media techniques, and Rolling Multimedia Unit training for Users and Site Administrators.

**Design and Graphics:**

Adobe PhotoShop, Adobe PageMaker, Adobe Illustrator, PaintShop Pro, Macromedia Flash, OmniForm with optical character recognition (OCR), and scanning images and text.

**General Computer Operations and Applications:**

Corel WordPerfect, Microsoft Excel, Microsoft Word, Microsoft Access, Microsoft Outlook, Microsoft Windows, Basic Computer Operations, and Computer File Management and Organization.

Internet and World Wide Web Design:

Netscape Communicator Composer, Macromedia Dreamweaver, DiDa Pro, Microsoft FrontPage, Gif Animator, Eudora E-mail, Preparing Graphics for the Web, Electronic Communications, HTML coding and Editing, Instant Web Page Design, Organizing Web Bookmarks, On-line Research Techniques, and Streaming Motion Video for the Web.

Teaching Strategies and Research:

Classroom Research Design, Critical Thinking, Exploring Daedalus, Introduction to Teaching on the Internet, Teaching Skills for the Internet, Systems Issues Related to Teaching on the Internet, and Legal Issues Related to Teaching on the Internet.

Video Training Series:

How to Handle Difficult People, How to Supervise People, Critical Thinking, Exceptional Customer Service, and Teaching Strategies.

Interactive Videoconferencing Training:

Training is provided to faculty on skills needed to teach by way of two-way interactive videoconferencing, or as it is sometimes called, interactive television. When using this medium, students and the instructor at the local site are able to see, hear, and speak with students at the distant sites. The instructor is able to transmit presentations, hard copy documents, and motion video to the students at both locations. The training sessions for faculty include hands-on training with the videoconferencing equipment.

**Internet Course Certification Program**

At the request of the San Antonio College President and Deans, a certification program was developed to ensure skill attainment of faculty developing Internet courses and a consistent high quality of course materials. Each month courses are offered toward the completion of these certifications.

**There are three levels of Internet Course training:****Level I - Internet Course Administrator's Certificate:**

Individuals completing this training may supervise but may not teach or develop Internet courses. These requirements are intended to assist chairpersons and administrators in the evaluation of future Internet course development and the selection of Internet course instructors.

**Level II - Internet Course Instructor Certification**

Individuals completing this training may teach existing Internet courses but may not develop Internet courses. To receive the Internet Course Instructor's Certification, faculty must attend an eighteen hour course of study and modify an existing Internet course to include their personal information and requirements.

**Level III - Internet Course Developer's Certification:**

Faculty completing all requirements may develop and teach new Internet-based courses. To receive certification, faculty must attend a twenty-four hour course of study and develop Web pages that represent all components of an Internet course. Certification will be awarded on completion of the training and final review of the Internet course materials by the Director of Instructional Technologies, Internet Course Coordinator, Director of Distance Education, and a committee of faculty from the developer's department and veteran Internet faculty.

The Internet Course Developer's Certification entitles the recipient to 2.4 CEUs (Continuing Education Units) awarded by the San Antonio College Continuing Education Department.

## **Web Developer's Certification Program**

These certifications were designed to provide training for individuals who must design Web pages for themselves or their departments but do not plan to teach on the Internet. There are currently two levels of certification for Web Developers.

### **Level I – Web Developer Certification:**

Training for this certification is comprised of fourteen hours of basic Web development and site management training. Recipients of this certification must develop a Website, which incorporates all elements of the training. The Website will be reviewed by the San Antonio College Webmaster, Director of Instructional Technologies, and Multimedia Specialists.

### **Level II – Web Developer Certification:**

This certification is designed to prepare an individual to develop sophisticated Websites. A prerequisite for this certification is the completion of Level I Web Developer Certification. An additional eighteen hours of advanced Web development training are required, and the recipients of this certification must incorporate all elements of the additional training into their Website. The enhanced Website will be reviewed by the San Antonio College Webmaster, Director of Instructional Technologies, and Multimedia Specialists.

## **Technology Center**

The **Technology Center** provides planning, coordination, installation, and maintenance of campus technology and it provides technical support to all academic and administrative units. The Technology Center provides recommendations for purchasing, equipment setup, installation of hardware and software, implementation of off-campus connectivity, and assists other departments with planning. The Technology Center also supervises the training of new and current technical personnel on the San Antonio College Campus.

### **Help Desk**

The San Antonio College **Help Desk** functions in connection with the Technology Center in order to provide immediate telephone assistance and trouble shooting for faculty, staff, and students. The Help Desk also develops and provides tutorials to assist the Internet Students.

### **Data Management Team**

The **Data Management Team**, functioning as part of the Technology Center at San Antonio College provides custom in-house application development. The Data Management Team recommends and produces new solutions as requested by departments, modification and support of existing applications, and incorporates information from legacy systems into meaningful and useful information for department use.



## LEARNING RESOURCE CENTER SERVICES 1996-1997 TO 2000-2001

CATEGORY/SERVICE	96-97	97-98	98-99	99-00	00-01
Collections – All items	247,448	250,004	254,160	200,985	176,419
Materials Processed (#)	12,641	6,118	6,279	13,904	12,781
<b>LIBRARY ATTENDANCE</b>					
User Headcount for 2 <sup>nd</sup> , 3 <sup>rd</sup> & 4 <sup>th</sup> Floors Only	377,788	333,017	1,122,051	157,093	345,366
<b>LIBRARY INSTRUCTION</b>					
Group Instruction Sessions	549	580	575	604	557
Students Taught in GIS Sessions	12,324	11,371	11,906	13,178	11,415
Reference Questions	39,552	35,201	38,310	31,840	---
Directional Questions	22,176	19,950	22,112	14,816	---
<b>BOOK COLLECTION</b>					
Book Circulation	52,872	82,909	157,202	1,595,326	19,897
In-Library Use of Books	87,931	111,952	366,820	484,042	57,759
Interlibrary Loans	7,152	7,098	6,396	4,654	1,186
<b>PERIODICALS COLLECTION</b>					
Periodical Circulation	54,893	39,355	34,747	35,568	89,246
<b>AUDIOVISUAL COLLECTION</b>					
AV Equipment Circulation	10,453	8,507	7,304	7,444	7,431
In-Library/ACCD Use of AV materials & Equipment	32,958	23,326	14,574	20,265	1,483
<b>INSTRUCTIONAL TELEVISION</b>					
Studio, Campus & Remote Shoots (# Hours)	392	830	497	380	296
Telecourse Playback	2,069	1,461	2,049	2,446	1,973
Editing/Dubbing Sessions (# Hours)	190	3,342	663	2,362	523
Teleconference Program (# Hours)	109	59	106	75	70

**SOURCE:** Learning Resource Center

## Student Learning Assistance Center

The Student Learning Assistance Center (SLAC) supplements classroom instruction by offering learning strategies that enhance the success potential of traditional students in the college environment. The goal of the SLAC is to enable the Alamo Community College District college students to be independent and resourceful learners by providing learning strategies appropriate to non-traditional students and students with diverse learning styles. SLAC develops independent learners by teaching students how to learn rather than merely giving them quick answers. The learning strategies offered through the SLAC include: Tutoring Services, Computer Services, and Study Skill Services.

The SLAC has several computer programs for student use such as accounting, electronic mail, Foreign Languages tutorial, internet access, Microsoft Office and word processing. The computers are available on a first-come, first-serve basis. On occasion, a teacher will bring a class into the SLAC for a demonstration of a specific software package, which may require several computers to be reserved for the class period.

During the 2001-2002 school year, the SLAC had 89,912 student visits to use computer facilities. Software programs include MS Word, WordPerfect, accounting, spreadsheets, databases, Internet, foreign languages, management, history, psychology, mathematics and chemistry. Over 290 class sessions were held in the SLAC during the year from the faculty of Management, Business Administration, History, Political Science, Legal Assisting, English, Public Administration, Chemistry, Computer Science, Foreign Languages, ESOL, Nursing, Continuing Education and Distance Education.

### SLAC SPECIALIZED VISIT SUMMARY 2001-2002

Division	Computer		Tutoring		Lang. Lab	Workshops Seminars	Total
	Visits		Visits				
Arts & Science	62,357	69.4%	2,532	71.1%			
Occupational Technical	18,362	20.4%	772	21.7%			
TBA	1,202	1.3%	76	2.1%			
Unknown	7,991	8.9%	181	5.1%			
<b>TOTALS</b>	89,912	100%	3,561	100%	4,795	11	98,279

## CONTENTS – STUDENT PROFILE

### GENERAL INFORMATION

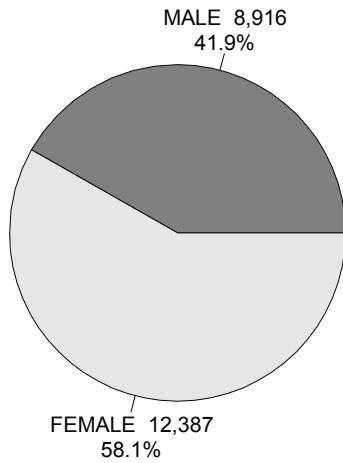
Gender, Ethnicity, Age, Major, Hours Enrolled, Day vs. Evening .....	23
Top Ten:	
Academic Majors .....	24
Vocational Majors.....	24
Feeder High Schools .....	24
Zip Codes of Residence .....	25
Counties of Residence.....	25
States of Residence .....	25
Student Objective in Attending San Antonio College .....	26
Intended Duration of Enrollment .....	26
Previous College Experience .....	26
Student Employment Status .....	26
Financial Aid and Scholarship Awards.....	27

### ACADEMIC ACHIEVEMENT

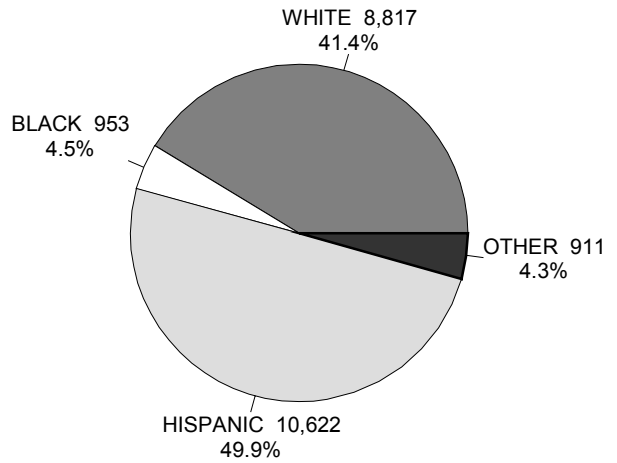
Grade Distribution, Fall 2001 .....	28
Grade Distribution Trends, Fall Semesters 1997-2001 .....	28
Fall to Fall Retention by Ethnicity, 1994-1995 to 1999-2000 .....	29
Retention of First-Time, Full-Time Freshmen by Ethnicity, Fall 2000 .....	29
Graduates by Degrees & Certificates Awarded, 2000-2001 .....	30
Graduates by Ethnicity, 2000-2001 .....	30
Graduates by Degrees & Certificates Awarded, 1996-1997 to 2000-2001 .....	30
Graduates by Ethnicity, 1996-1997 to 2000-2001 .....	30
TASP Results by Institution, 1999-2000 .....	31
TASP Pass Rates – Retake Attempts by Ethnicity, 1999-2000 .....	31
TASP Pass Rates – Retake Attempts by Section, 1998-1999 to 1999-2000 .....	31

**FALL 2001  
21,303 STUDENTS**

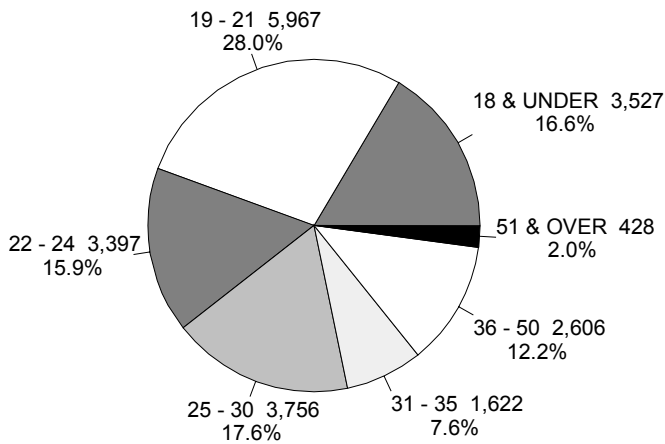
**GENDER**



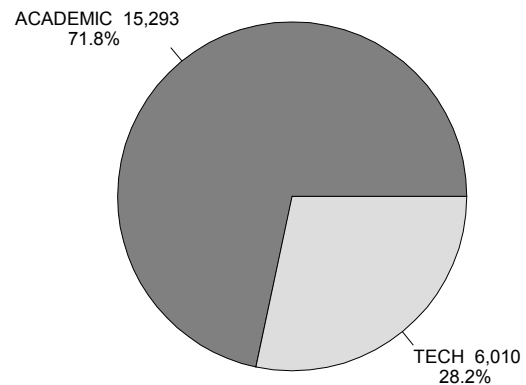
**ETHNICITY**



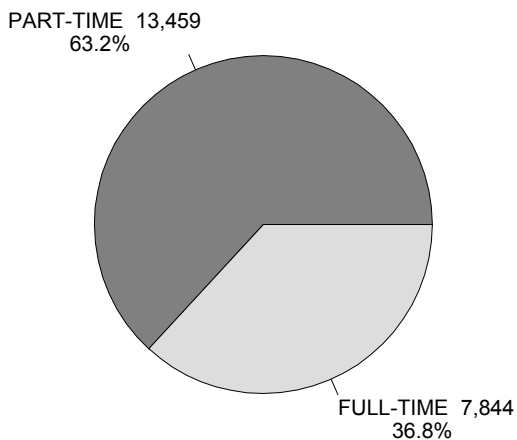
**AGE**



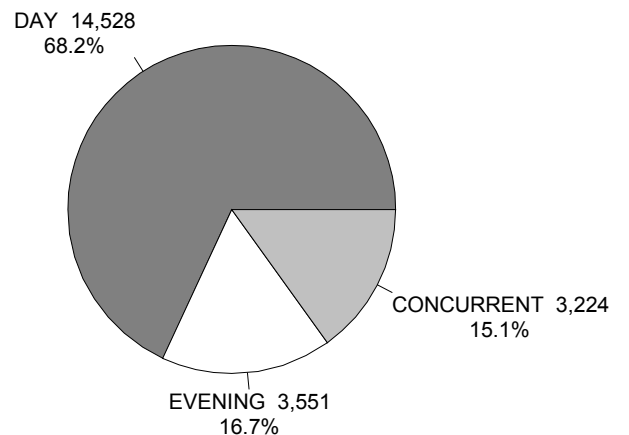
**MAJOR**



**HOURS ENROLLED**



**DAY VS. EVENING**



SOURCE: CBM001; RCA003

**FALL 2001 - TOP TEN  
ACADEMIC MAJORS**

MAJORS	NUMBER
1. Liberal Arts	7,377
2. Business Administration – Accounting	1,297
3. Education	969
4. Psychology	574
5. Biological Sciences	548
6. Nursing (4-Year Degree)	430
7. Computer Science	415
8. Medicine	331
9. Architecture	302
10. Art	286

SOURCE: RCA003, 11/05/01

**VOCATIONAL MAJORS**

MAJORS	NUMBER
1. Pre-Nursing	805
2. Nursing (RN)	487
3. Computer Programming	469
4. Child Development	358
5. Computer Network Administration	342
6. Criminal Justice-Law Enforcement Option	218
7. Electronic Graphic Arts	204
8. Radio-TV-Film Technology	201
9. Interpreting For The Deaf	141
10. Management	124

SOURCE: RCA003, 11/05/01

**FEEDER HIGH SCHOOLS (FTIC'S)**

HIGH SCHOOLS	NUMBER
1. Ronald Reagan High School – North East I.S.D.	257
2. Douglas MacArthur – North East I.S.D.	211
3. Winston Churchill – North East I.S.D.	206
4. James Madison – North East I.S.D.	194
5. Alamo Heights – Alamo Heights I.S.D.	173
6. Robert E. Lee – North East I.S.D.	165
7. Judson High School – Judson I.S.D.	107
8. Theodore Roosevelt High School – North East I.S.D.	101
9. Tom Clark – Northside I.S.D.	85
10. Thomas A. Edison High School – San Antonio I.S.D.	81

SOURCE: RFA978, 01/18/02

**FALL 2001 - TOP TEN  
ZIP CODES OF RESIDENCE**

ZIPCODES	NUMBER
1. 78240	924
2. 78213	891
3. 78247	883
4. 78216	878
5. 78228	865
6. 78201	800
7. 78232	753
8. 78230	706
9. 78212	646
10. 78229	639

SOURCE: RFA942, 01/17/02

**COUNTIES OF RESIDENCE**

COUNTIES	NUMBER
1. Bexar	19,647
2. Comal	670
3. Guadalupe	509
4. Kerr	217
5. Kendall	141
6. Cameron	105
7. Wilson	97
8. Bandera	92
9. Medina	88
10. Atascosa	61

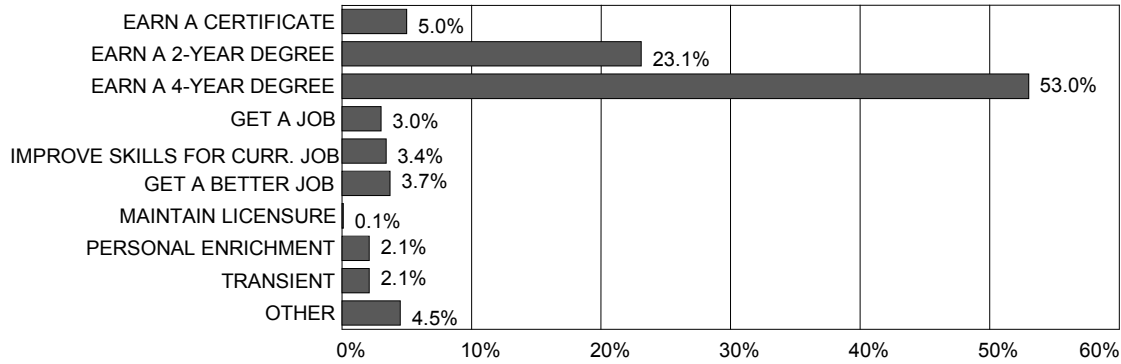
SOURCE: RCA003, 11/05/01

**STATES OF RESIDENCE**

STATES	NUMBER
1. Texas	20,810
2. Missouri	116
3. California	86
4. Florida	53
5. New York	28
6. Illinois	27
7. Louisiana	26
8. Arizona	20
9. Ohio	19
10. South Carolina & Washington	17

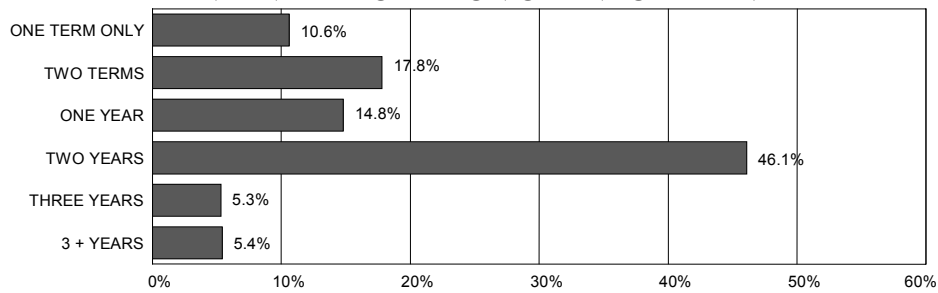
SOURCE: RCA003, 11/05/01

**FALL 2001**  
**STUDENT OBJECTIVE IN ATTENDING SAN ANTONIO COLLEGE**



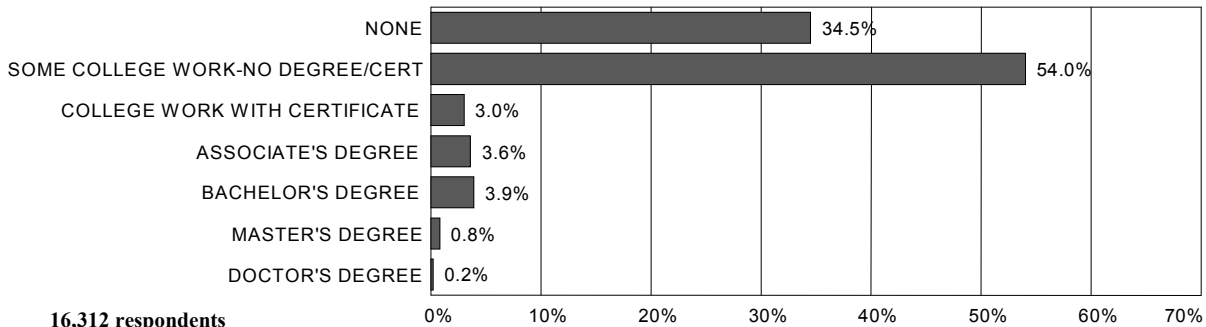
15,244 respondents

**INTENDED DURATION OF ENROLLMENT**



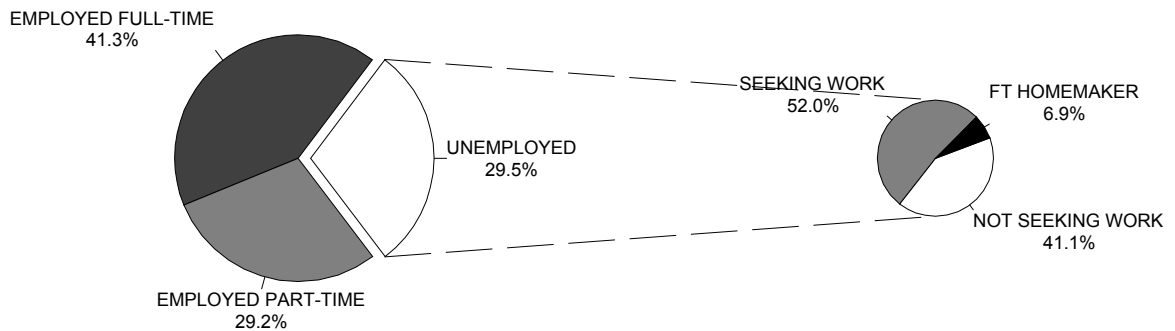
15,943 respondents

**PREVIOUS COLLEGE EXPERIENCE**



16,312 respondents

**STUDENT EMPLOYMENT STATUS**



SOURCE: STUDENT TRACKING SURVEY (AFA020, 01/17/02); 21,857 potential respondents

**FINANCIAL AID AWARDS 2001-2002**

CATEGORY	AMOUNT	# AWARDS
Pell Grant	\$15,234,584	7,263
Stafford Loan	8,063,255	3,837
Federal Work Study (State-CWS)	718,566	504
Supplemental Education Opportunity Grant (SEOG)	862,500	1,597
Scholarships	911,142	1,595
State Incentive Grant (SSIG)	45,852	92
Other State Grants	1,071,346	1,237
Texas Public Education Grant (TPEG)	755,607	1,049
<b>TOTAL</b>	<b>27,662,852</b>	<b>17,174</b>

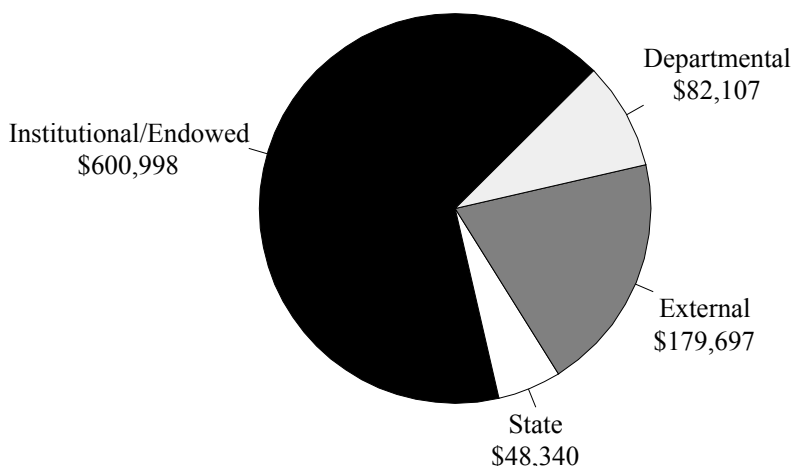
SOURCE: Student Financial Aid Office

**SCHOLARSHIPS AWARDED 2001-2002**

Institutional/Endowed	\$ 600,998
Departmental	82,107
State	48,340
External	179,697

**Total Awarded \$ 911,142**

Total number of scholarships awarded:  
**1,595**



Scholarships are available from a variety of sources both private and public. Listed below are types of scholarships available through San Antonio College.

**Endowed scholarships-** awarded by ACCD. Contributions made to ACCD scholarship foundation by private donors. Applications available at Student Financial Services.

**Institutional scholarships-** awarded by Student Financial Services. Applications available at Student Financial Services Office.

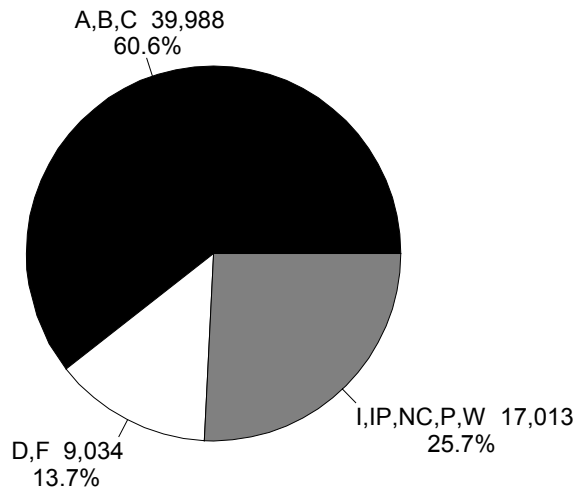
**Departmental scholarships-** awarded by departments. Private gifts donated to departments from various organizations. Awards usually based on major, GPA, community work. For additional information/ applications, contact departments.

**State scholarships-**Texas Tuition Assistance Grant, Early High School Graduates, Good Neighbor, and Professional Nursing available through the Texas Higher Education Coordinating Board. Awarded by Student Financial Services.

**External scholarships-** awarded by a variety of off-campus businesses/organizations for students attending San Antonio College.

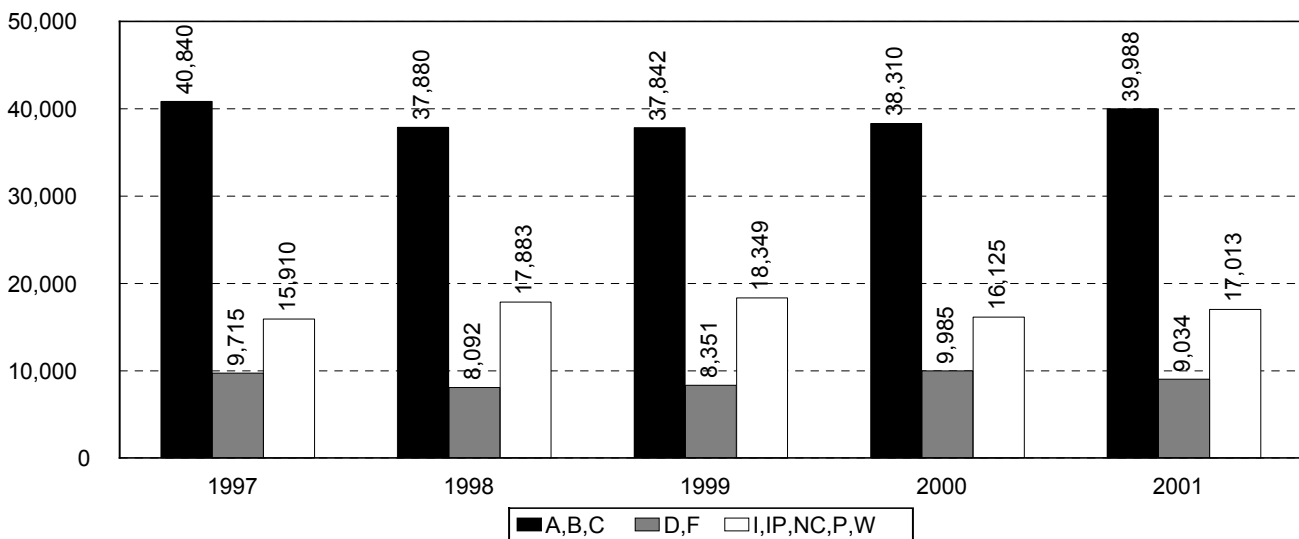


**GRADE DISTRIBUTION – FALL 2001**



**GRADE DISTRIBUTION TRENDS – FALL 1997-2001**

	A	B	C	Productive Rate	D	F	Completion Rate	I	IP	NC	P	W	Total
<b>1997</b>	14,406 21.7%	15,459 23.3%	10,975 16.5%	40,840 61.4%	3,422 5.1%	6,293 9.5%	50,555 76.1%	0 0.0%	191 0.3%	158 0.2%	0 0.0%	15,561 23.4%	66,465 100.0%
<b>1998</b>	12,926 20.2%	14,515 22.7%	10,439 16.3%	37,880 59.3%	3,323 5.2%	4,769 7.5%	45,972 72.0%	820 1.3%	204 0.3%	203 0.3%	0 0.0%	16,656 26.1%	63,855 100.0%
<b>1999</b>	13,608 21.1%	14,263 22.1%	9,971 15.5%	37,842 58.6%	3,337 5.2%	5,014 7.8%	46,193 71.6%	913 1.4%	292 0.5%	206 0.3%	0 0.0%	16,938 26.2%	64,542 100.0%
<b>2000</b>	14,155 22.0%	13,964 21.7%	10,191 15.8%	38,310 59.5%	3,329 5.2%	6,656 10.3%	48,295 75.0%	0 0.0%	249 0.4%	3 0.0%	20 0.0%	15,853 24.6%	64,420 100.0%
<b>2001</b>	14,483 21.9%	14,842 22.5%	10,663 16.1%	39,988 60.5%	3,339 5.1%	5,695 8.6%	49,022 74.2%	1,127 1.7%	272 0.4%	16 0.0%	10 0.0%	15,588 23.6%	66,035 100.0%



SOURCE: RFA696, 01/17/02

## FALL TO FALL RETENTION BY ETHNICITY 1994-1995 TO 1999-2000

	94-95 %	95-96 %	96-97 %	97-98 %	98-99 %	99-00 %
<b>% of SAC students who reenrolled at San Antonio College the next Fall (Non-graduates)</b>						
Anglo	41.6	40.9	40.0	39.1	40.4	39.5
Black	38.7	37.3	35.5	36.8	42.3	39.1
Hispanic	45.6	45.5	45.2	43.1	44.9	44.3
Asian	46.7	45.0	51.8	43.8	47.5	49.0
Native American/Alaskan	48.3	44.2	36.5	38.6	44.3	40.6
Non-Resident Alien	48.0	45.3	46.8	51.0	50.6	52.4
<b>Total</b>	<b>43.6</b>	<b>43.2</b>	<b>42.7</b>	<b>41.3</b>	<b>43.1</b>	<b>42.4</b>
<b>Texas</b>	<b>39.1</b>	<b>37.2</b>	<b>38.8</b>	<b>38.8</b>	<b>41.7</b>	<b>41.2</b>
<b>% of SAC students not found in any state college the next Fall (Non-graduates)</b>						
Anglo	45.5	45.4	46.1	45.0	44.7	44.6
Black	52.5	53.7	53.7	51.9	47.3	49.7
Hispanic	45.4	45.2	45.1	46.5	44.7	45.4
Asian	41.1	41.3	35.3	38.6	38.0	36.1
Native American/Alaskan	38.2	42.1	52.9	44.6	38.6	46.4
Non-Resident Alien	41.2	44.2	48.3	37.4	34.5	38.0
<b>Total</b>	<b>45.6</b>	<b>45.5</b>	<b>45.7</b>	<b>45.8</b>	<b>44.5</b>	<b>44.9</b>
<b>Texas</b>	<b>47.6</b>	<b>47.2</b>	<b>47.3</b>	<b>46.9</b>	<b>43.9</b>	<b>44.2</b>

SOURCE: Texas Higher Education Coordinating Board Student Migration Report; transfer to private or out-of-state institutions not considered

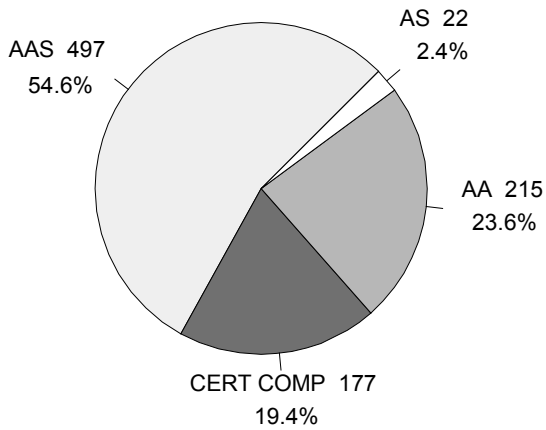
**RETENTION OF FIRST-TIME FULL-TIME\* FRESHMEN BY ETHNICITY  
FALL 2000**

	WHITE	BLACK	HISPANIC	ASIAN	NATIVE AM./ ALASKAN	INTERNATIONAL	TOTAL
<b>San Antonio College</b>							
Enrolled Fall 1999	649	48	890	43	1	39	1,670
Retained After One Year	329	21	454	26	0	21	851
Percent Retained	50.7%	43.8%	51.0%	60.5%	0.0%	53.8%	51.0%
<b>Total – Texas</b>							
Enrolled Fall 1999	26,991	5,336	13,026	1,274	217	1,046	48,040
Retained After One Year	13,607	2,443	7,317	817	91	550	24,908
Percent Retained	50.4%	45.8%	56.2%	64.1%	41.9%	52.6%	51.8%

SOURCE: Texas Higher Education Coordinating Board – 2001 Statistical Report

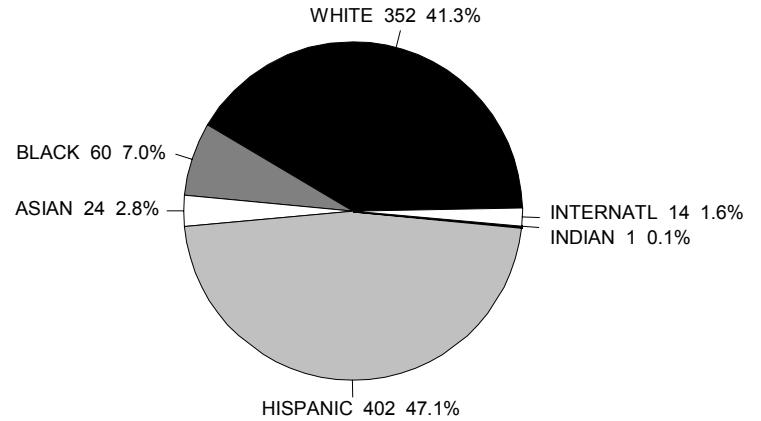
\* A student who is enrolled in 12 or more semester credit hours at a community college or 8 or more semester credit hours at a technical college.

**2000-2001 GRADUATES BY DEGREES & CERTIFICATES AWARDED**



**TOTAL DEGREES: 911**

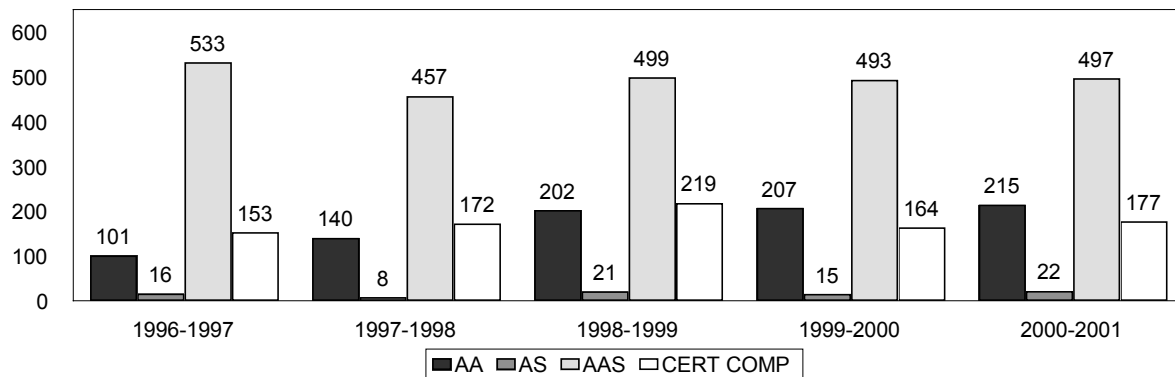
**2000-2001 GRADUATES BY ETHNICITY**



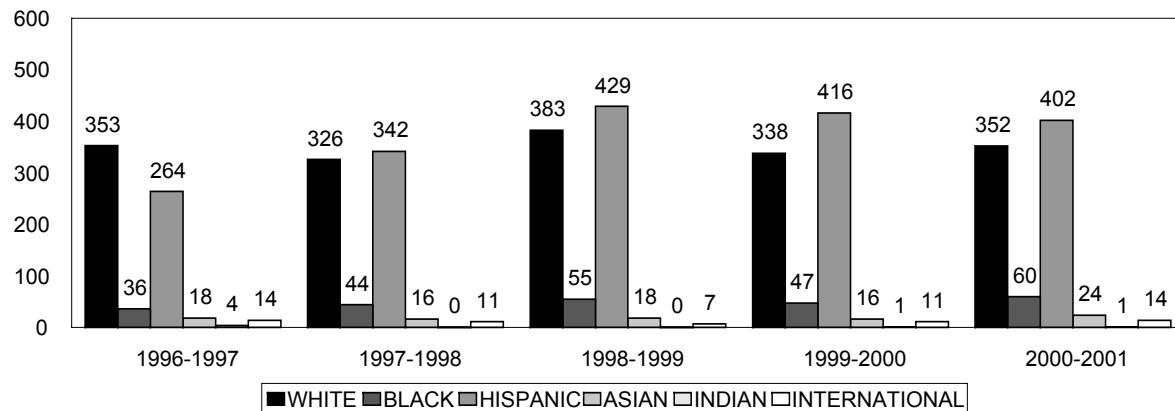
**TOTAL GRADUATES: 853**

SOURCE: CBM009, 11/19/01

**DEGREES AND CERTIFICATES AWARDED 1996-1997 TO 2000-2001**



**GRADUATES BY ETHNICITY 1996-1997 TO 2000-2001**



SOURCE: CBM009, 11/19/01

## TASP RESULTS BY INSTITUTION 1999-2000

INSTITUTION	# OF EXAMINEES THAT TOOK ALL 3 PARTS	% PASSED READING	% PASSED MATH	% PASSED WRITING	% PASSED ALL SECTIONS
San Antonio College	1,121	71.9	57.9	70.8	52.1
St. Philip's College	470	66.7	48.9	65.9	43.0
Palo Alto College	445	64.3	45.6	63.3	42.0
Northwest Vista College	159	71.0	65.4	70.4	57.2
UT San Antonio	61	59.5	69.2	36.7	34.4
Southwest Texas	405	82.5	74.0	79.1	74.1
Texas Two-Year	31,278	52.7	39.8	46.5	35.0
Texas Four-Year	11,751	68.0	59.6	64.9	55.7
Texas Total	43,029	56.4	44.9	51.1	40.7

SOURCE: Texas Higher Education Coordinating Board TASP Test Results Academic Year 1999-2000.

## \* TASP PASS RATES – RETAKE ATTEMPTS BY ETHNICITY 1999-2000

INSTITUTION	ASIAN	BLACK	HISPANIC	WHITE	OTHER	TOTAL
San Antonio College	47.4	43.8	45.0	65.3	46.5	52.1
St. Philip's College	11.1	30.4	39.8	62.3	100.0	43.0
Palo Alto College	42.9	50.0	38.0	56.8	0.0	42.0
Northwest Vista College	83.3	72.7	55.2	54.3	0.0	57.2
Texas Two-Year	28.8	22.5	29.5	43.4	30.9	35.0

SOURCE: Texas Higher Education Coordinating Board TASP Test Results Academic Year 1999-2000.

\* TASP passing rates represent a duplicate headcount of students who re-took the TASP one or more times during the year and passed one or more sections. This table does not include students who passed TASP completely on the first attempt.

## TASP PASS RATES – RETAKE ATTEMPTS BY SECTION 1998-1999 TO 1999-2000

Section	1998-1999		1999-2000	
	All Community and Technical Colleges	SAC	All Community and Technical Colleges	SAC
All Parts	34.9%	43.8%	35.0%	52.1%
Math	41.0%	51.9%	39.8%	57.9%
Reading	51.0%	76.3%	52.7%	71.9%
Writing	54.6%	75.2%	46.5%	70.8%

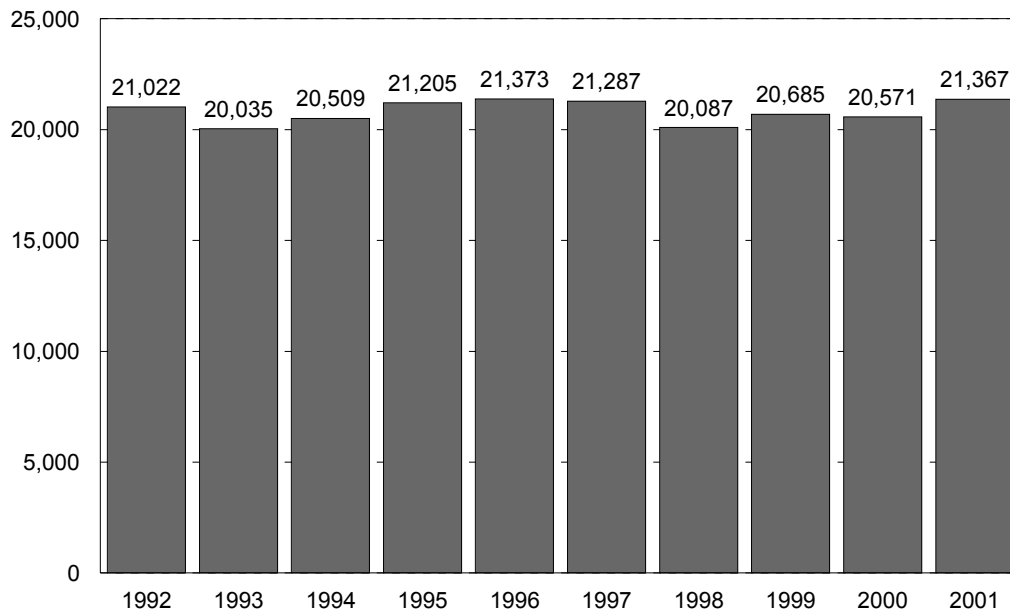
SOURCE: Texas Higher Education Coordinating Board TASP Results Academic Year 1998-1999; 1999-2000.

NOTE: TASP Test Summary for Academic Year 2000-2001 was not available in time for publication.

## CONTENTS – ENROLLMENT TRENDS

Credit Programs:	
Fall Semesters 1992-2001 and Spring Semesters 1993-2002 .....	33
Summer I Session 1993-2002 & Summer II Sessions 1992-2001 .....	34
By Classification Fall Semesters 1997-2001 (Summary Statistics) .....	35
By Gender .....	36
By Ethnicity .....	36
By Division .....	37
Part-Time vs. Full-Time .....	37
Day vs. Evening .....	38
By Residency .....	38
By Age .....	39
First-Time Students .....	39
Contact Hours, Fall & Spring Semesters 1997-2002 .....	40
Contact Hours, Summers I & II 1997-2001 .....	40
Distance Education:	
Highlights .....	41
Registrations, Fall Semesters 1997-2001 .....	42
Developmental Education:	
Enrollment Fall Semesters 1997-2001 .....	44
Trends in Developmental English .....	45
Trends in Developmental Math .....	45
Trends in Developmental Reading .....	45
Continuing Education:	
Highlights .....	46
Contracts .....	47
Contract Companies .....	47
Total Enrollment 1992-1993 to 2001-2002 .....	48
Tuition/Fee Revenue 1992-1993 to 2001-2002 .....	48
Unduplicated Number of Students Enrolled at Any Time During Academic Year by Type of Major 1997-1998 to 1999-2000 .....	48
Reimbursable Headcount by Quarter 1997-2001 .....	49
Reimbursable Contact Hours by Quarter 1997-2001 .....	49
Reimbursable Classes by Quarter 1997-2001 .....	49

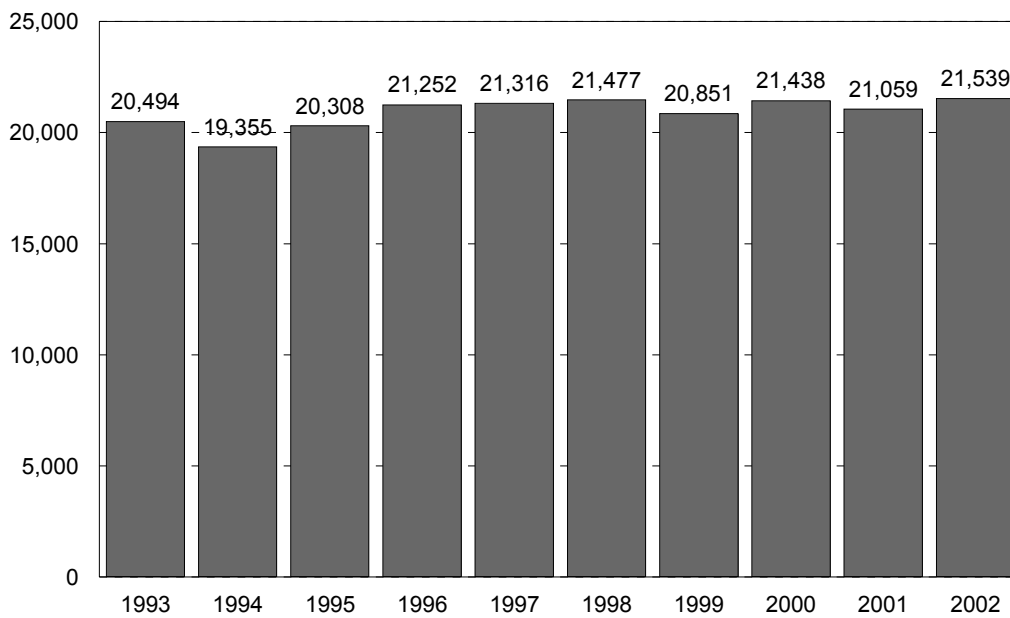
**ENROLLMENT FALL SEMESTERS 1992-2001**



SOURCE: CBM001

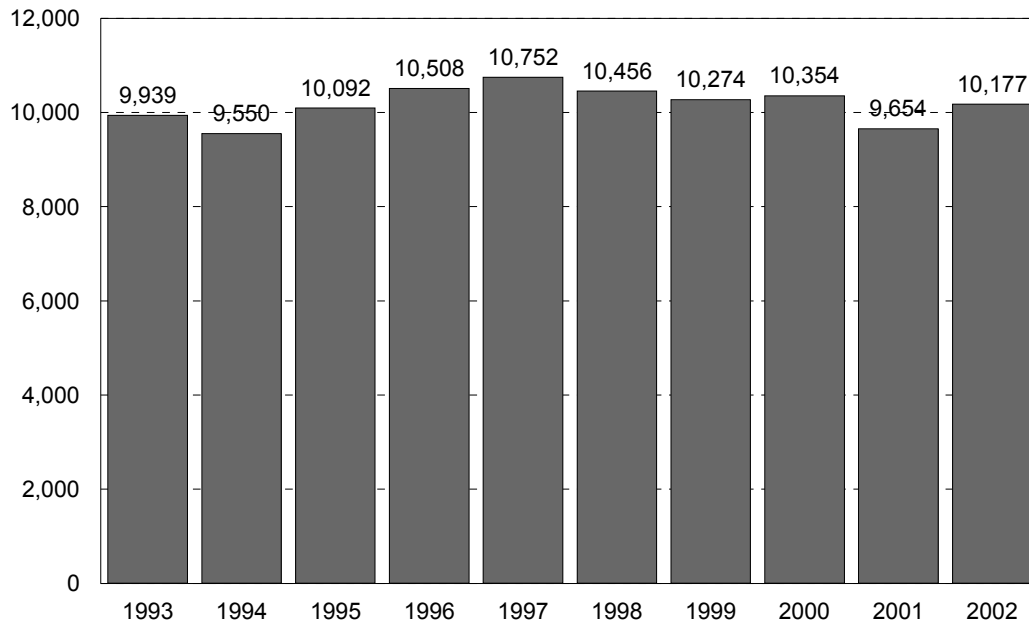
---

**ENROLLMENT SPRING SEMESTERS 1993-2002**



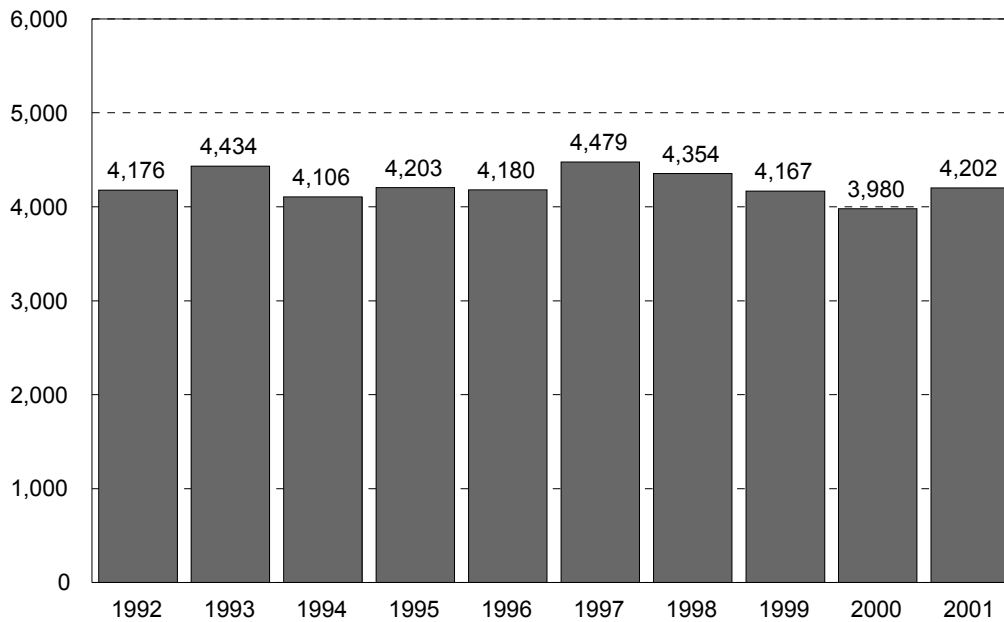
SOURCE: CBM001

**ENROLLMENT SUMMER SESSION I 1993-2002**



SOURCE: CBM001

**ENROLLMENT SUMMER SESSION II 1992-2001**



SOURCE: CBM001

Note: Summer II 2002 certified data not available in time for publication.

## ENROLLMENT TRENDS BY CLASSIFICATION – FALL 1997-2001

	1997	1998	1999	2000	2001
<b>GENDER</b>					
Female	12,306	11,497	11,997	11,946	12,387
Male	8,981	8,571	8,617	8,544	8,916
<b>ETHNICITY</b>					
White	8,824	8,175	8,292	8,097	8,817
Black	888	882	928	906	953
Hispanic	10,735	10,195	10,523	10,548	10,622
Other	840	816	871	939	911
<b>AGE</b>					
17 & under	1,128	824	1,148	1,220	1,579
18	1,752	1,743	1,908	1,753	1,948
19 - 21	5,972	5,657	5,756	5,967	5,967
22 - 24	3,493	3,260	3,307	3,259	3,397
25 - 30	3,834	3,726	3,720	3,642	3,756
31 - 35	1,924	1,706	1,604	1,571	1,622
36 - 50	2,825	2,821	2,815	2,655	2,606
51 - 64	341	316	348	401	405
65 & over	18	15	8	22	23
Average age	26.0	26.1	25.9	25.8	25.5
<b>DIVISION</b>					
Arts & Sciences	14,642	13,621	13,946	14,373	15,293
Occ/Tech	6,645	6,447	6,668	6,117	6,010
<b>PART-TIME vs. FULL-TIME</b>					
Part-time	14,021	12,727	13,035	13,120	13,459
Full-time	7,266	7,341	7,579	7,370	7,844
<b>DAY vs. EVENING</b>					
Day	13,806	13,219	13,581	13,540	14,528
Evening	4,547	3,943	3,945	3,636	3,551
Concurrent	2,934	2,906	3,088	3,314	3,224
<b>RESIDENCY</b>					
Texas Counties	20,553	19,253	19,699	19,540	20,356
Other States	526	569	630	635	667
Foreign Countries	208	246	285	315	280
<b>TOTAL</b>	<b>21,287</b>	<b>* 20,068</b>	<b>* 20,614</b>	<b>* 20,490</b>	<b>* 21,303</b>

SOURCE: CBM001; RCA003

\* Total does not include flexible entry students for whom no demographic data are available.

Total Fall 97 enrollment is 21,287

Total Fall 98 enrollment is 20,087

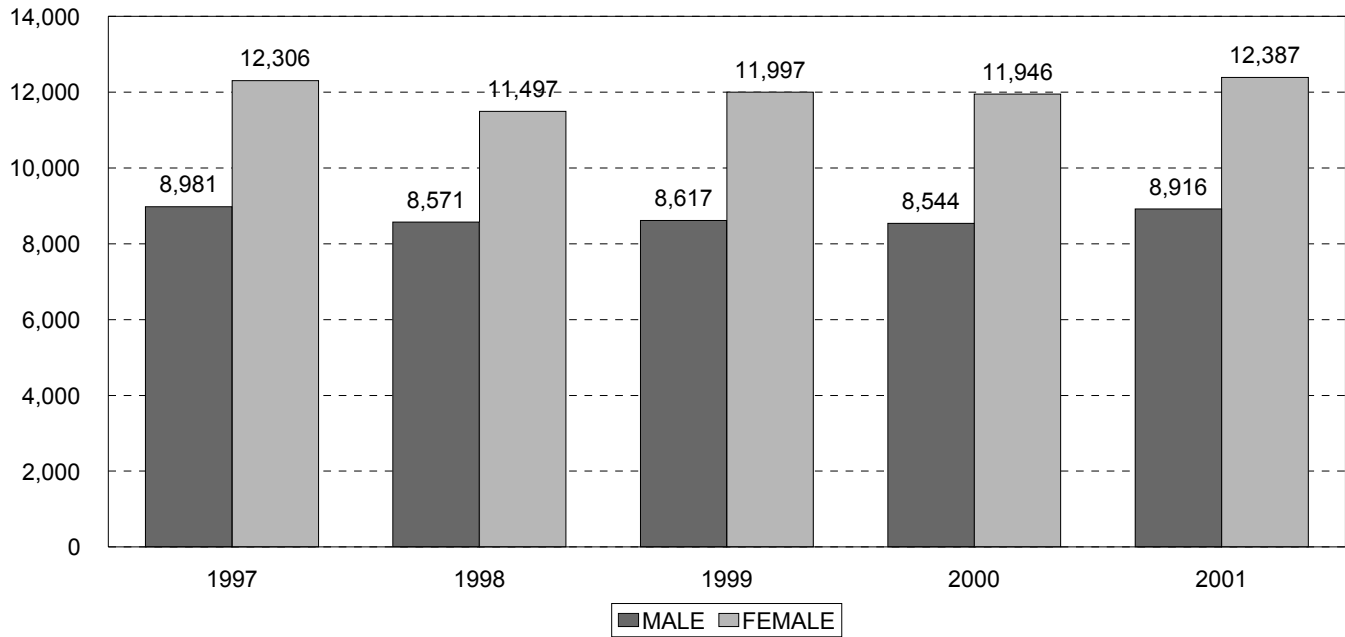
Total Fall 99 enrollment is 20,685

Total Fall 00 enrollment is 20,571

Total Fall 01 enrollment is 21,367

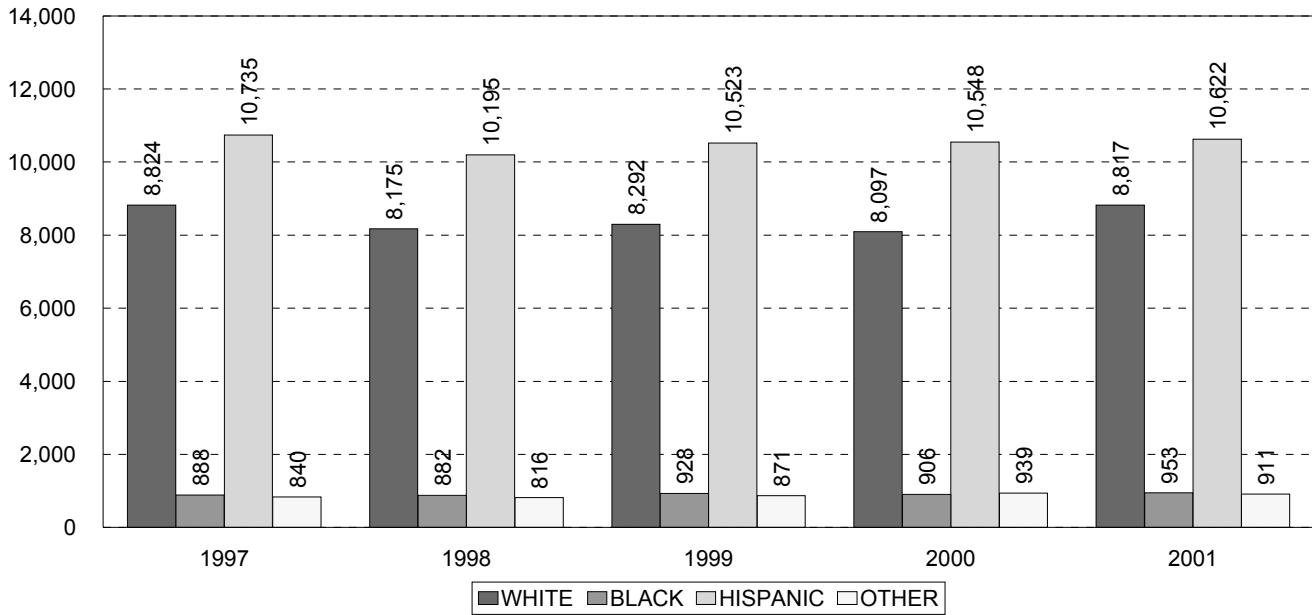


**GENDER FALL 1997-2001**



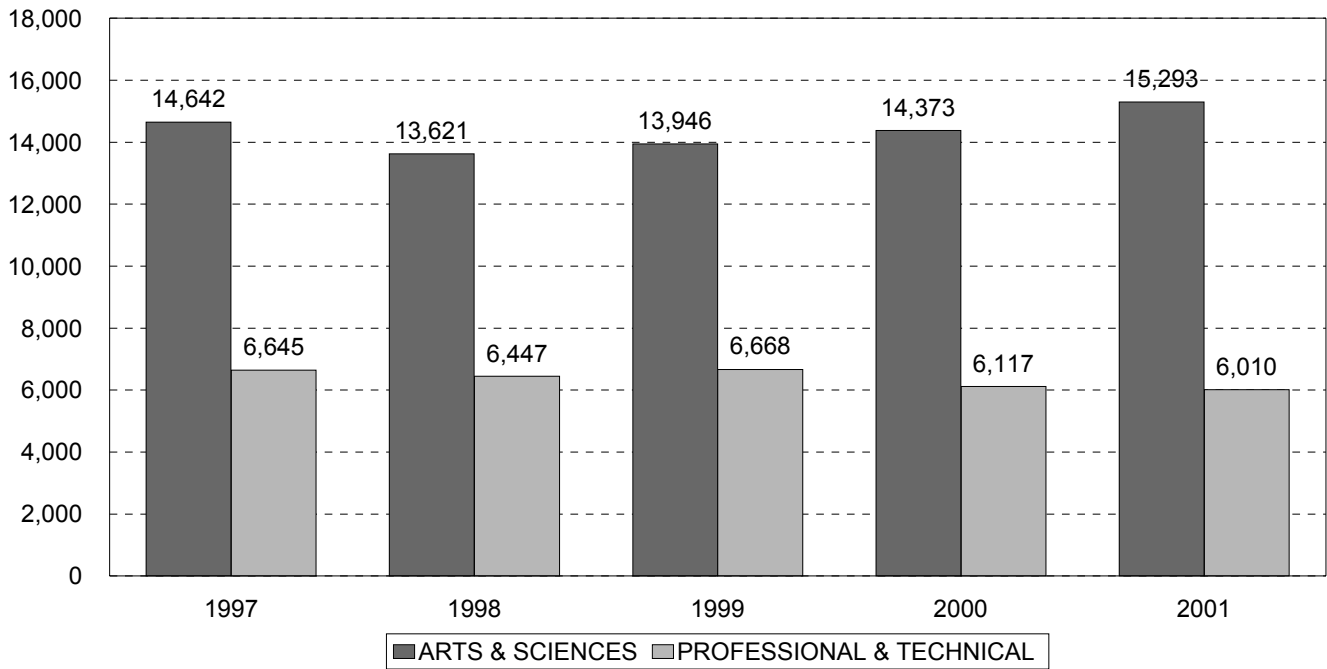
SOURCE: CBM001

**ETHNICITY FALL 1997-2001**



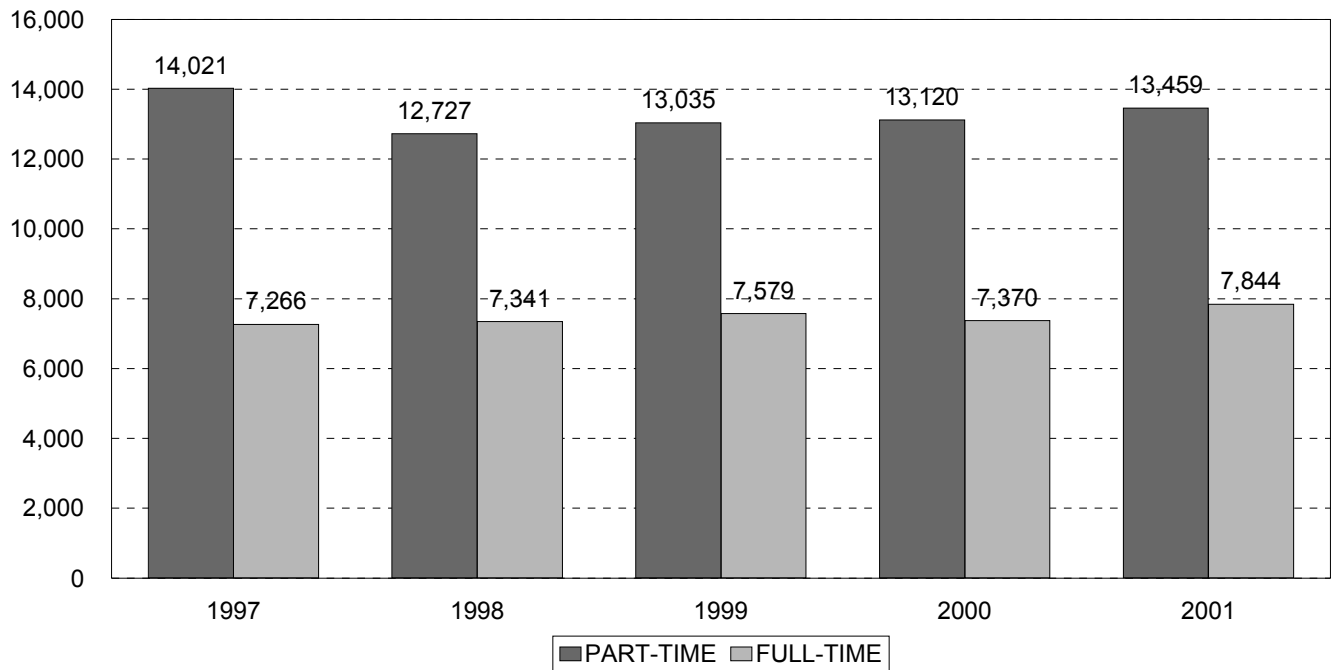
SOURCE: CBM001

**DIVISION FALL 1997-2001**



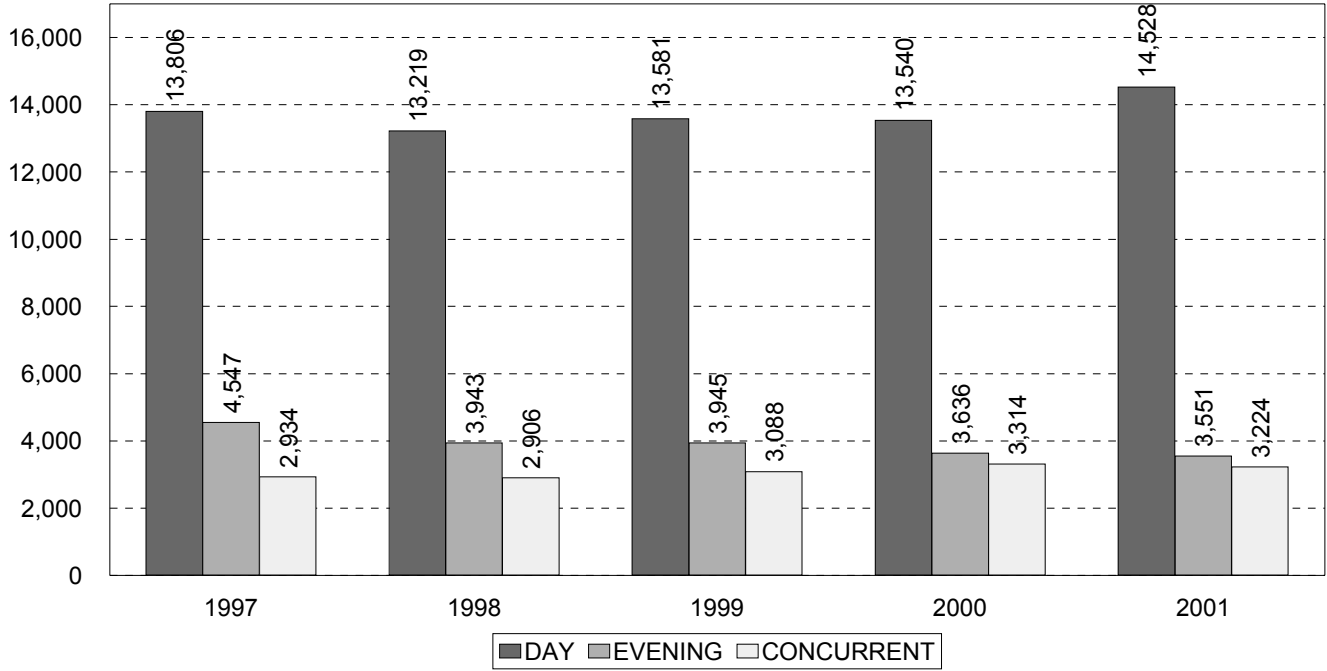
SOURCE: CBM001

**PART-TIME VS. FULL-TIME FALL 1997-2001**



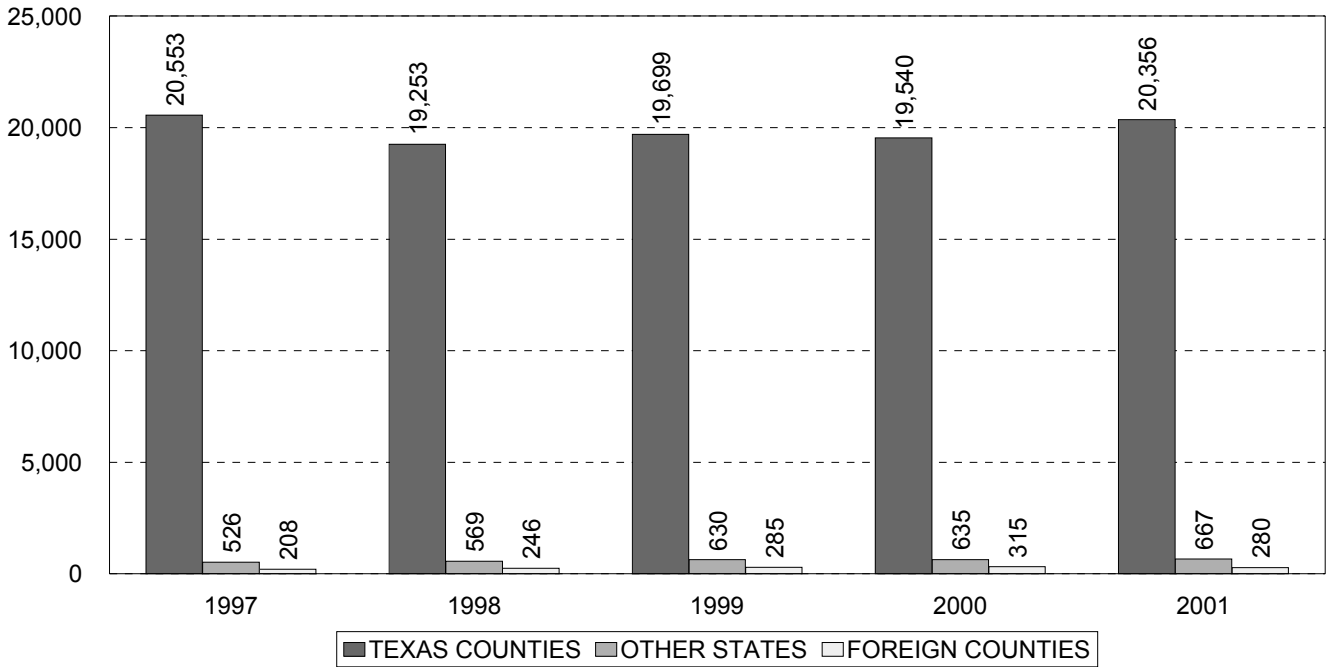
SOURCE: CBM001; RCA003

**DAY VS. EVENING FALL 1997-2001**



SOURCE: CBM001; RCA003

**RESIDENCY FALL 1997-2001**



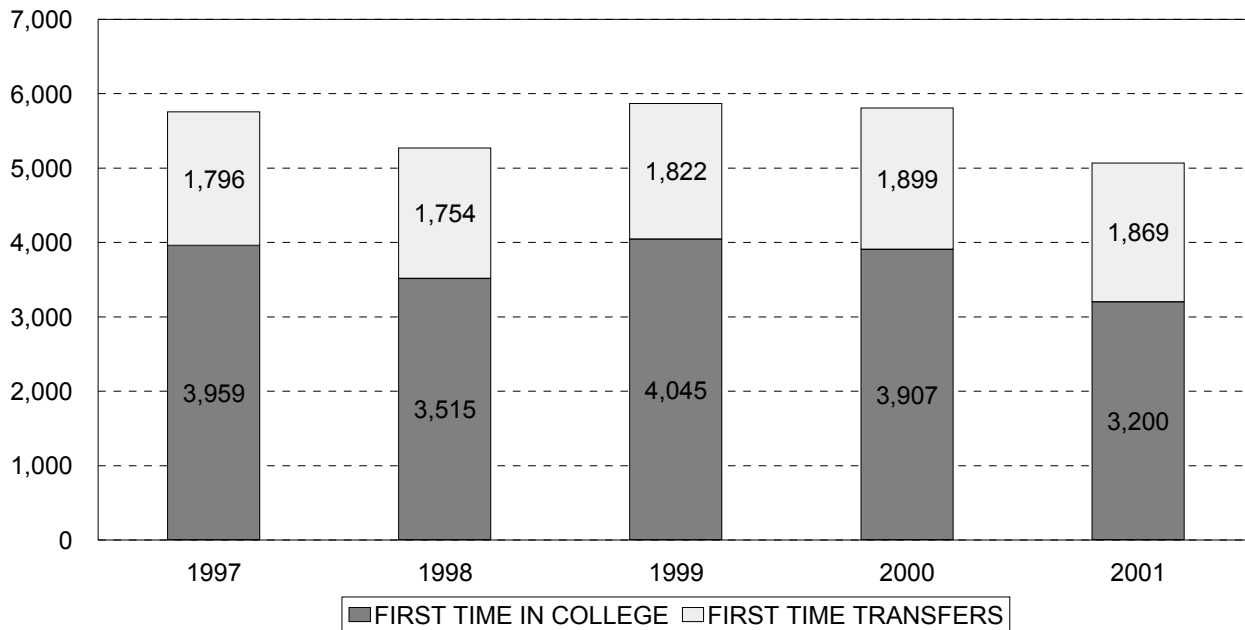
SOURCE: CBM001

**AGE FALL 1997-2001**

AGE	1997	1998	1999	2000	2001
17 & UNDER	1,128	824	1,148	1,220	1,579
18	1,752	1,743	1,908	1,753	1,948
19 – 21	5,972	5,657	5,756	5,967	5,967
22 – 24	3,493	3,260	3,307	3,259	3,397
25 – 30	3,834	3,726	3,720	3,642	3,756
31 – 35	1,924	1,706	1,604	1,571	1,622
36 – 50	2,825	2,821	2,815	2,655	2,606
51 – 64	341	316	348	401	405
65 & OVER	18	15	8	22	23
<i>AVG. AGE</i>	26.0	26.1	25.9	25.8	25.5

SOURCE: CBM001

**FIRST-TIME STUDENTS FALL 1997-2001**



SOURCE: CBM001

**CONTACT HOURS FALL & SPRING SEMESTERS 1997-2002**

<b>SEMESTER</b>	<b>ACADEMIC</b>	<b>PROF/TECH</b>	<b>TOTAL</b>
FALL 1997 SPRING 1998*	2,678,912 2,454,448	693,920 831,504	3,372,832 3,285,952
FALL 1998 SPRING 1999*	2,563,056 2,360,928	709,776 830,448	3,272,832 3,191,376
FALL 1999 SPRING 2000*	2,612,240 2,455,728	707,904 838,240	3,320,144 3,293,968
FALL 2000 SPRING 2001*	2,608,000 2,405,744	673,776 780,352	3,281,776 3,186,096
FALL 2001 SPRING 2002*	2,750,352 2,558,048	715,216 759,280	3,465,568 3,317,328

SOURCE: Summary Table prepared by Records and Reports based on CBM004; \*includes Fall Flex II terms

**CONTACT HOURS SUMMERS I & II 1997-2001**

<b>SEMESTER</b>	<b>ACADEMIC</b>	<b>PROF/TECH</b>	<b>TOTAL</b>
SUM I 1997* SUM II 1997	664,672 315,024	249,646 38,636	914,318 353,660
SUM I 1998* SUM II 1998	646,208 312,416	242,128 30,950	888,336 343,366
SUM I 1999* SUM II 1999	613,056 293,840	274,296 30,496	887,352 324,336
SUM I 2000* SUM II 2000	625,040 288,384	247,680 26,728	872,720 315,112
SUM I 2001* SUM II 2001	602,000 310,864	162,336 24,832	764,336 335,696

SOURCE: Summary Table prepared by Records and Reports based on CBM004; \*includes Spring Flex II terms

## DISTANCE EDUCATION

2001-2002

### HIGHLIGHTS

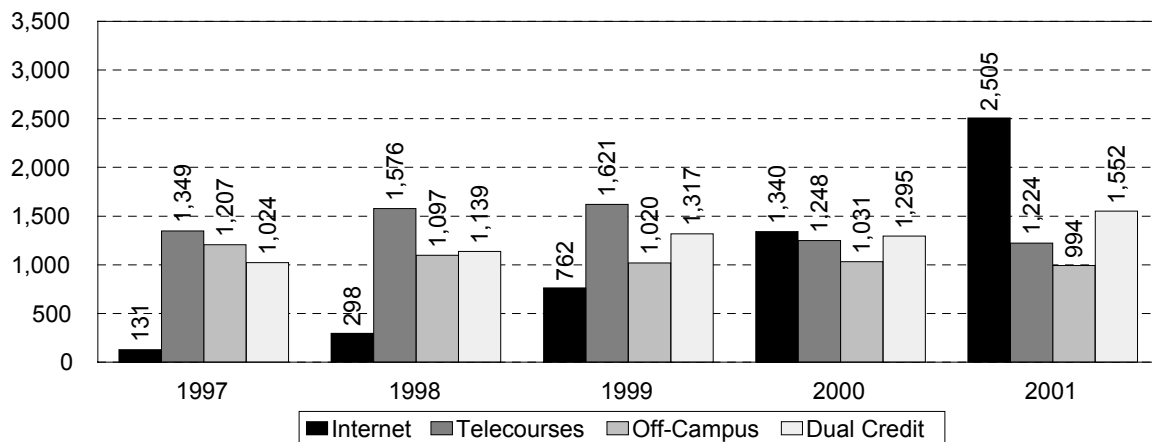
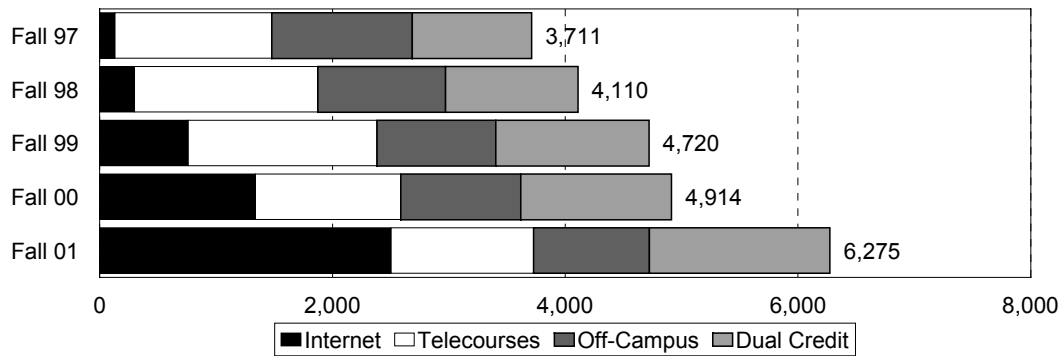
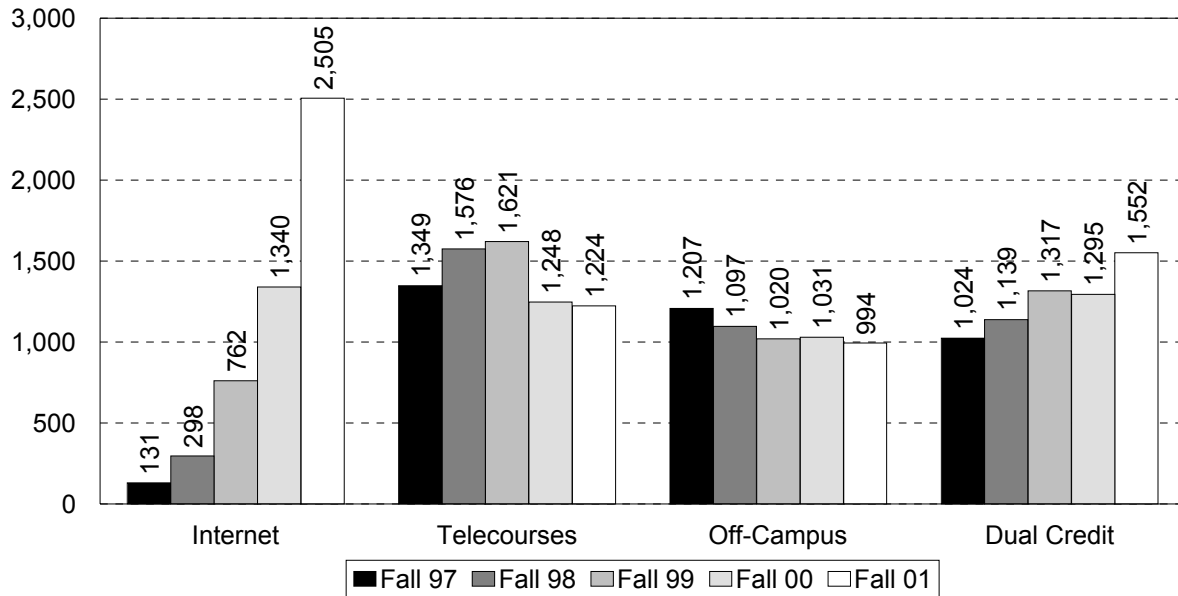
- Internet registrations increased by 47% in Fall 2001 over Fall 2000. Internet Enrollments were as follows: Fall 2000---1,340 Fall 2001---2,505
- San Antonio College obtained approval from the Texas Higher Education Coordinating Board and the Southern Association of Colleges and Schools to offer the *first* Associate of Arts & Associate of Applied Science online degrees in Texas.
- San Antonio College collaborated with Laredo Community College, Austin Community College, Howard Community College, Coastal Bend Community College and numerous other colleges in Texas to enroll Virtual College of Texas students in SAC courses.
- The Distance Education Center maintained its alliance with area Chambers of Commerce to respond to the educational needs of the business community.
- San Antonio College established the “Bridge the Gap Program” for LVNs to complete RN program prerequisites in the cities of Kerrville and Seguin.
- The Distance Education Center in partnership with the ACCD financial aid office awarded a total of six scholarships to SAC students enrolled in off-campus courses in Seguin.
- Distance Education in partnership with other college departments was successful in securing a 2.1 million Title V grant from the Department of Education to implement several initiatives to improve college retention. One initiative established the college’s new *Internet Skills Center*, which focuses on facilitating Internet learning.
- The Distance Education Director and the Director of Instructional Technologies presented SAC’s *Distance Education Model* at two national conferences.

## DISTANCE EDUCATION REGISTRATIONS -- FALL 1997 TO FALL 2001

	Fall 97	Fall 98	Fall 99	Fall 00	Fall 01
<b>Internet</b>	131	298	762	1,340	2,505
<b>Telecourses</b>	1,349	1,576	1,621	1,248	1,224
<b>Off-Campus</b>	1,207	1,097	1,020	1,031	994
<b>Total Internet, Telecourse, Off-campus</b>	<b>2,687</b>	<b>2,971</b>	<b>3,403</b>	<b>3,619</b>	<b>4,723</b>
<b>Dual Credit:</b>					
Alamo Heights High School	143	143	142	206	150
Bandera High School	24	45	90	81	96
Brownsville ISD			32	51	93
Canyon High School	52	56	75	64	156
Centerpoint High School	13	11	14	17	19
Edison High School	42	5	26		26
Edgewood ISD				16	
Falfurrias				14	3
Harlandale High School	17	6	5		10
Highlands High School		30			11
McCollum High School			19		7
New Braunfels High School	176	23	55		14
North East Ind. School District	453	545	572	562	738
Northside Ind. School District	61	99	96	84	46
SAC	4		51		
San Antonio ISD				44	18
Southside ISD				15	14
Tivy High School Kerrville	39	176	140	141	151
<b>Total Dual Credit</b>	<b>1,024</b>	<b>1,139</b>	<b>1,317</b>	<b>1,295</b>	<b>1,552</b>
<b>TOTAL DISTANCE EDUCATION</b>	<b>3,711</b>	<b>4,110</b>	<b>4,720</b>	<b>4,914</b>	<b>6,275</b>

SOURCE: Evening, Weekend &amp; Distance Education Division

**DISTANCE EDUCATION REGISTRATIONS -- FALL 1997 TO FALL 2001**



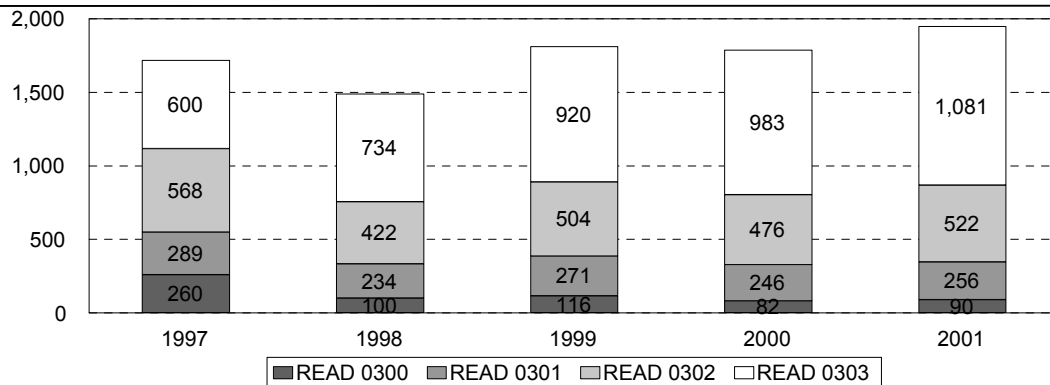
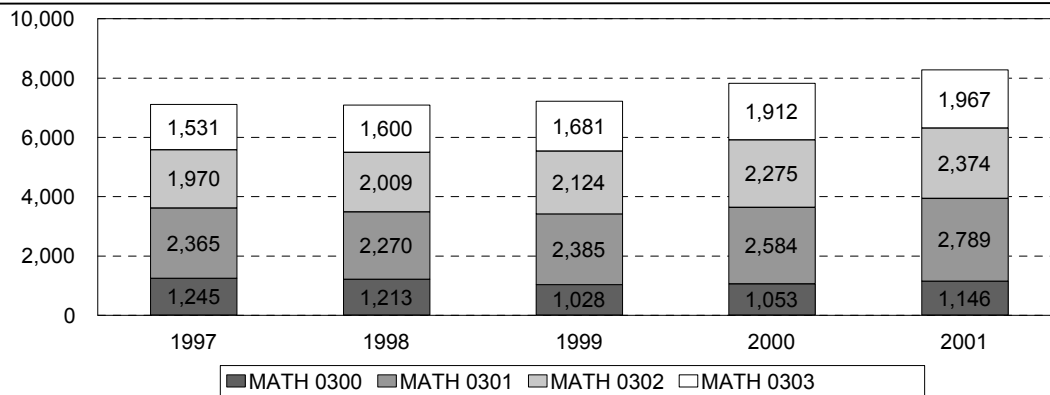
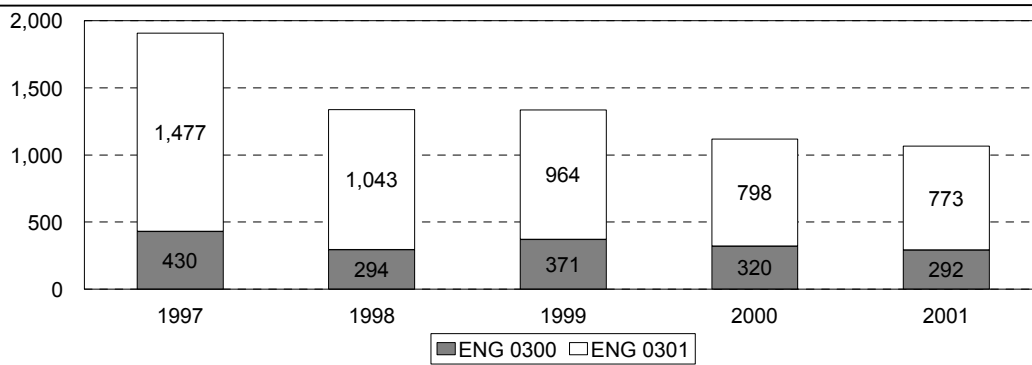
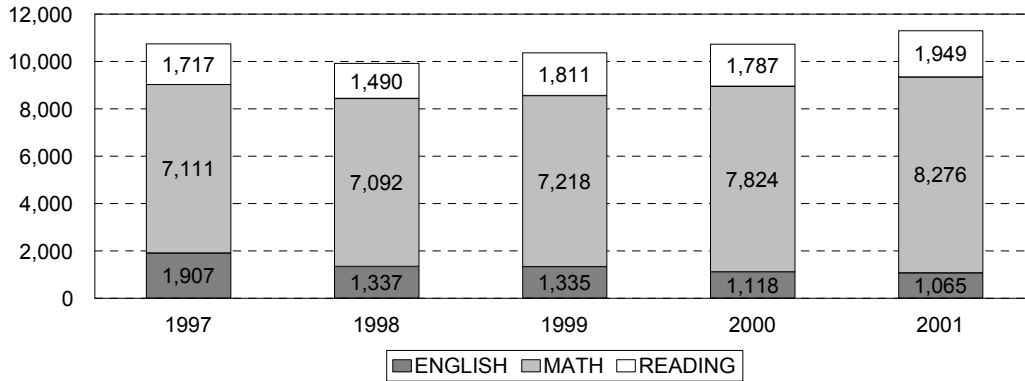


**DEVELOPMENTAL EDUCATION  
FALL SEMESTERS 1997-2001**

COURSE		1997	1998	1999	2000	2001
<b>ENGL 0300</b>	ENROLLMENT SECTIONS	430 19	294 16	371 18	320 17	292 15
<b>ENGL 0301</b>	ENROLLMENT SECTIONS	1,477 69	1,043 53	964 48	798 37	773 37
<b>TOTAL</b>	ENROLLMENT SECTIONS	1,907 88	1,337 69	1,335 66	1,118 54	1,065 52
<b>MATH 0300</b>	ENROLLMENT SECTIONS	1,245 50	1,213 51	1,028 46	1,053 44	1,146 46
<b>MATH 0301</b>	ENROLLMENT SECTIONS	2,365 93	2,270 87	2,385 84	2,584 89	2,789 92
<b>MATH 0302</b>	ENROLLMENT SECTIONS	1,970 76	2,009 75	2,124 83	2,275 87	2,374 89
<b>MATH 0303</b>	ENROLLMENT SECTIONS	1,531 57	1,600 58	1,681 71	1,912 72	1,967 78
<b>TOTAL</b>	ENROLLMENT SECTIONS	7,111 276	7,092 271	7,218 284	7,824 292	8,276 305
<b>READ 0300</b>	ENROLLMENT SECTIONS	260 14	100 7	116 6	82 5	90 6
<b>READ 0301</b>	ENROLLMENT SECTIONS	289 16	234 15	271 14	246 13	256 13
<b>READ 0302</b>	ENROLLMENT SECTIONS	568 26	422 21	504 24	476 22	522 26
<b>READ 0303</b>	ENROLLMENT SECTIONS	600 24	734 29	920 38	983 41	1,081 46
<b>TOTAL</b>	ENROLLMENT SECTIONS	1,717 80	1,490 72	1,811 82	1,787 81	1,949 91
<b>TOTAL</b>	<b>ENROLLMENT SECTIONS</b>	<b>10,735 444</b>	<b>9,919 412</b>	<b>10,364 432</b>	<b>10,729 427</b>	<b>11,290 448</b>

SOURCE: CBM004 (1997-1999); AFA055 (2000-2001)

**DEVELOPMENTAL EDUCATION  
FALL SEMESTERS 1997-2001**



SOURCE: CBM004 (1997-1999); AFA055 (2000-2001)

## CONTINUING EDUCATION & WORKFORCE DEVELOPMENT 2001-2002 ANNUAL REPORT

### HIGHLIGHTS

- Continuing Education enrolled over 14,000 students, reported 358,098 reimbursable contact hours, and recorded 1,009,761 in tuition and fee revenues for the first ten months of this year.
- The Division continues to build its presence on the World Wide Web by expanding on line course offerings to over 270 sections each semester.
- In support of college strategic goal 4.2.98 the division successfully deployed a fully automated course programming system. This new system replaces the manual processing formally required to plan and program continuing education classes.
- The Dean of Continuing Education & Workforce Development and the Continuing Education Information/Advisement Specialist presented at the Texas Administrators of Continuing Education and Junior Colleges annual conference in Austin, TX.
- The Continuing Education Information/Advisement Specialist was elected to serve as Treasurer for the Texas Administrators of Continuing Education and Junior Colleges.
- The Continuing Education Program Manager and the North East Independent School District Director of Compensatory Education formed a partnership to offer continuing education credits to parents enrolled in the academy that promotes parent involvement in their children's education at the elementary level.
- The first class of Paramedic Students graduated from the division's EMS Academy under the new National Standards curriculum.
- A new partnership was formed between this division and the Women's Center to provide classroom instruction in the newly developed Medical Administrative Assistant Training program.
- San Antonio College Continuing Education was granted sole provider status with Achieve Global.
- The division partnered with County Court at Law #1 to develop an alternative sentencing program that offers offenders with less than a High School diploma the opportunity to earn a GED.

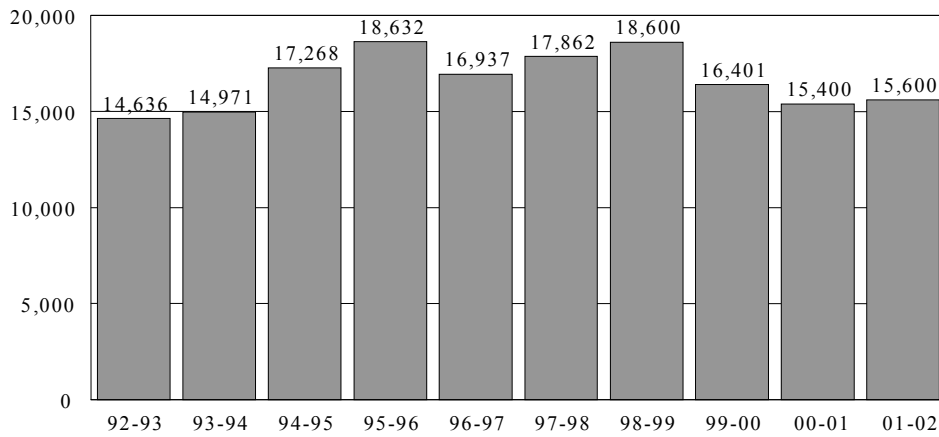
**CONTRACTS**

- The division cultivated 23 contract-training opportunities that generated over \$54,000 in revenue. There were a total of 44 sections taught with 793 students participating.

**CONTINUING EDUCATION - CONTRACT COMPANIES 2001-2002**

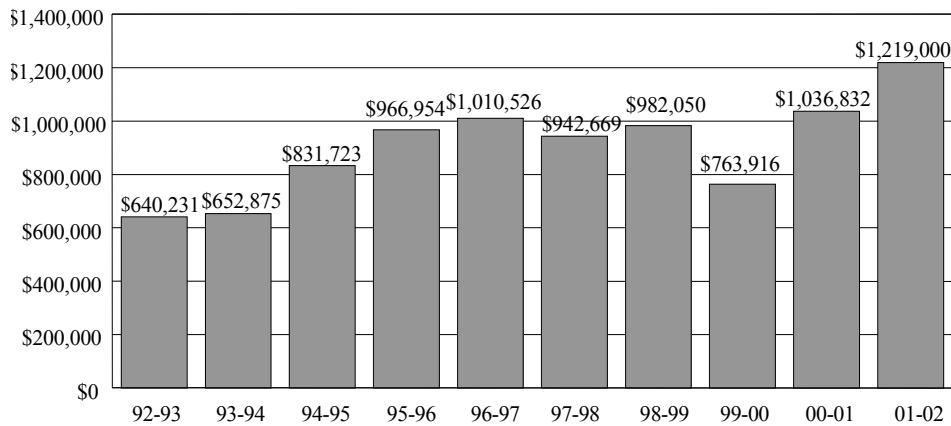
Austin Parole Board	Pik Nik Foods
Children's Shelter of San Antonio	Plumber's & Pipe Fitter's Union
City of Kerrville	Practice Management Institute
City of San Antonio	RAFB, HQ AFPC/DPCXT
Critter Control of San Antonio	Santiko's Theatres
Flextronics International	Saudi Arabian Cultural Mission
Frio County EMS	Seoul Health Science College
Health South Surgical Center Pecan Valley	South TX Veterans Health Care System
Jungle Laboratories Corp.	Tristar Corp.
Kindercare Learning Center	VIA Metropolitan Transit
La Petite Kid's Station	Wilson County Volunteer Ambulance Assn.
North East I.S.D.	

**CONTINUING EDUCATION  
TOTAL ENROLLMENT 1992-1993 TO 2001-2002  
(reimbursable & nonreimbursable duplicate headcount)**



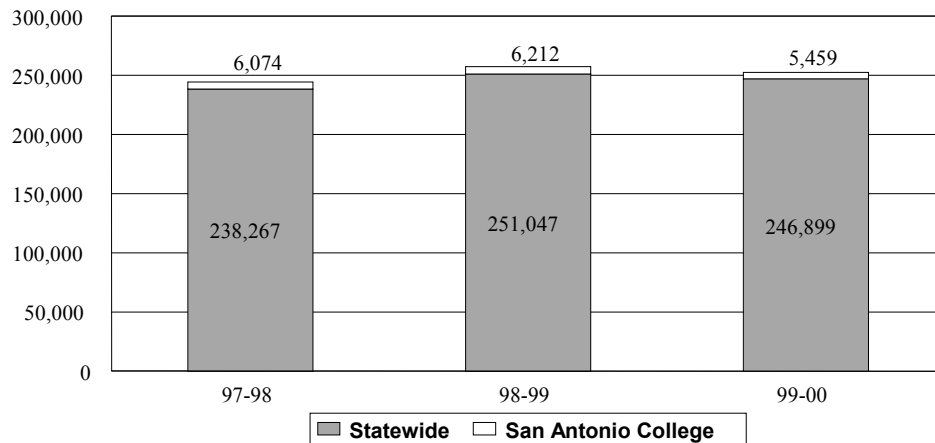
SOURCE: Division of Continuing and Workforce Development 2001-2002 figures are projected.

**CONTINUING EDUCATION  
TUITION/FEE REVENUE 1992-1993 to 2001-2002  
(reimbursable & nonreimbursable courses)**



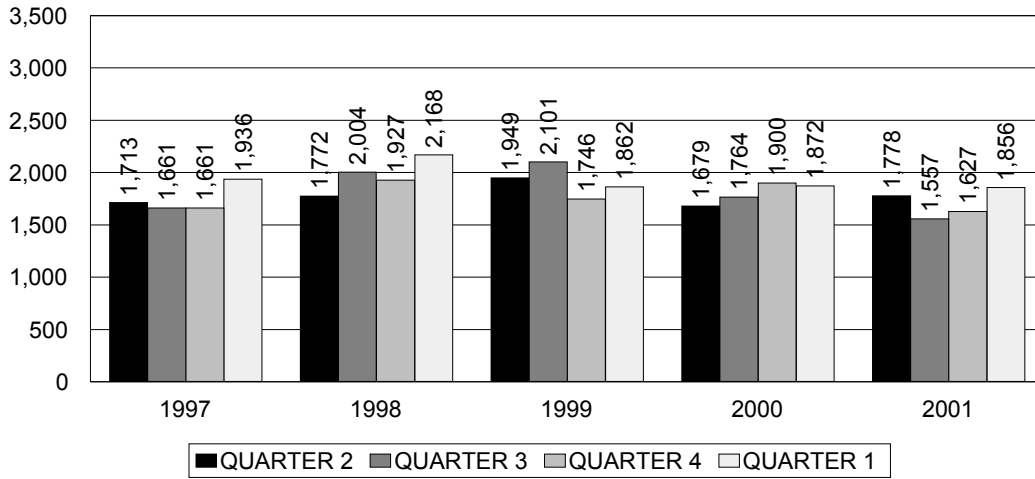
SOURCE: Division of Continuing and Workforce Development 2001-2002 figures are projected.

**CONTINUING EDUCATION UNDUPLICATED NUMBER OF STUDENTS ENROLLED AT ANY TIME  
DURING ACADEMIC YEAR BY TYPE OF MAJOR 1997-1998 to 1999-2000**

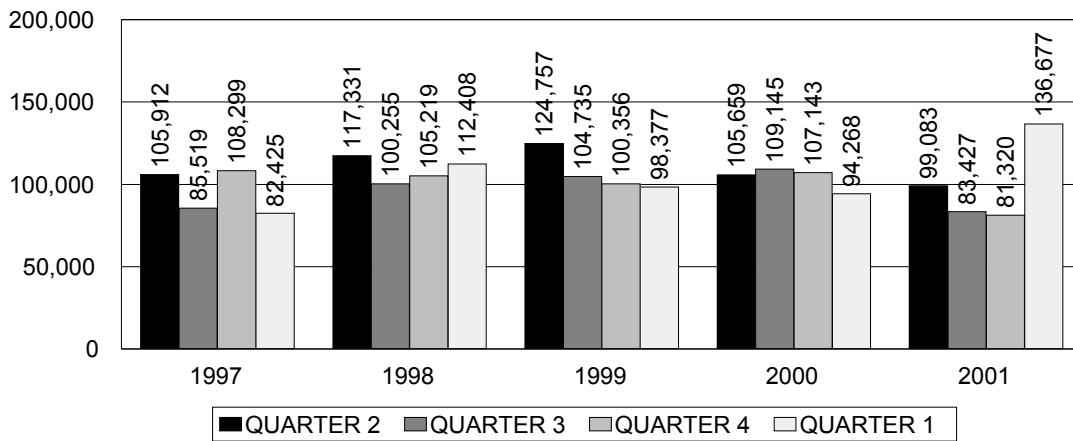


SOURCE: THECB Texas Public Community and Technical Colleges Statewide 1999-2001 Fact Books

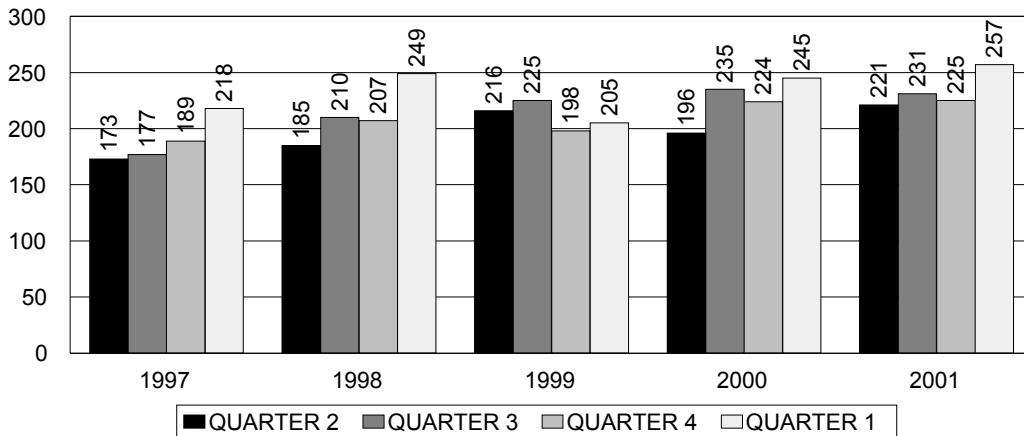
**CONTINUING EDUCATION 1997-2001  
HEADCOUNT TRENDS BY QUARTER (reimbursable courses)**



**CONTACT HOUR TRENDS BY QUARTER (reimbursable courses)**



**CLASS TRENDS BY QUARTER (reimbursable courses)**

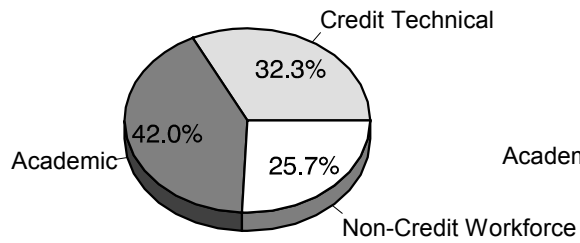


## CONTENTS – STATEWIDE TRENDS

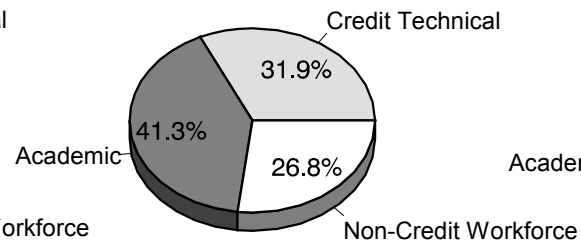
<b>A COMPARISON OF SAN ANTONIO COLLEGE &amp; STATEWIDE ENROLLMENT TRENDS: TOTAL ENROLLMENT</b>	
Unduplicated Number Of Students Enrolled At Any Time During Academic Year	
By Type of Major, 1997-1998 to 1999-2000 .....	51
By Type of Major, 1997-1998 to 1999-2000 (Bar Graph).....	52
By Ethnicity and Gender, 1999-2000 .....	53
Unduplicated Number of Credit Students by Number of Hours Enrolled, 1999-2000 (San Antonio College) .....	54
Enrollment by Special Populations, 1999-2000.....	55
<b>FIRST-TIME IN COLLEGE ENROLLMENT</b>	
First-Time-in-College Students by Special Populations, 1999-2000.....	55
First-Time-in-College Students Receiving Remediation, Fall 1999	
By Gender .....	56
By Ethnicity .....	56
By Full-Time/Part-Time Status.....	56
<b>COHORT PROGRESSION ANALYSIS OF FTIC STUDENTS BY TYPE OF MAJOR</b>	
Fall Semester, 1995.....	57
Fall Semester, 1996.....	57
Fall Semester, 1997.....	57

**Statewide**

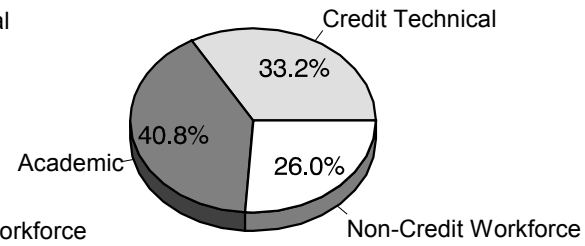
**1997-1998**



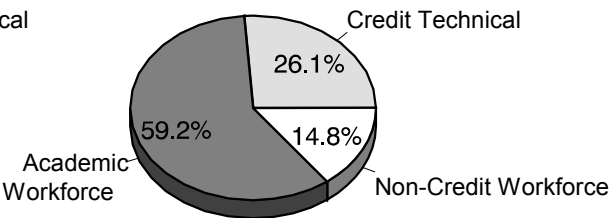
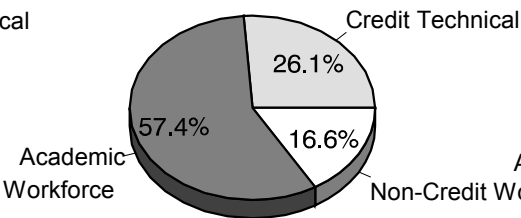
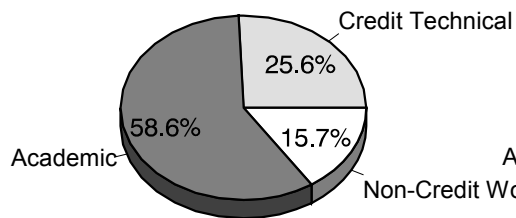
**1998-1999**



**1999-2000**



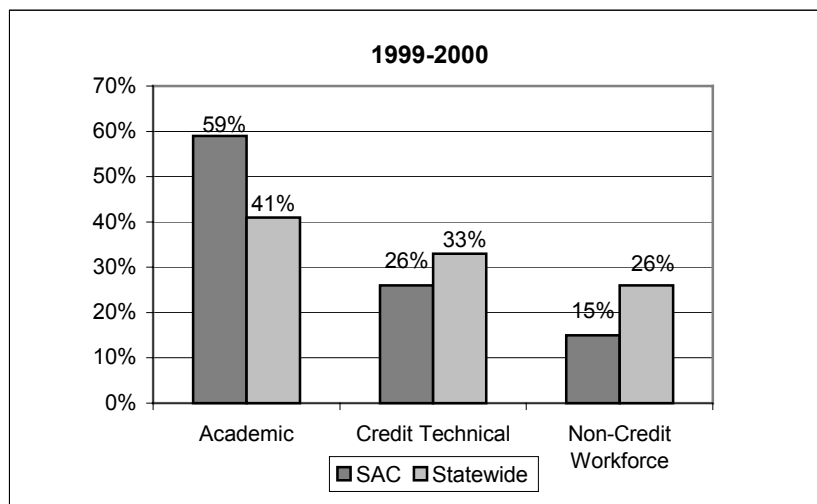
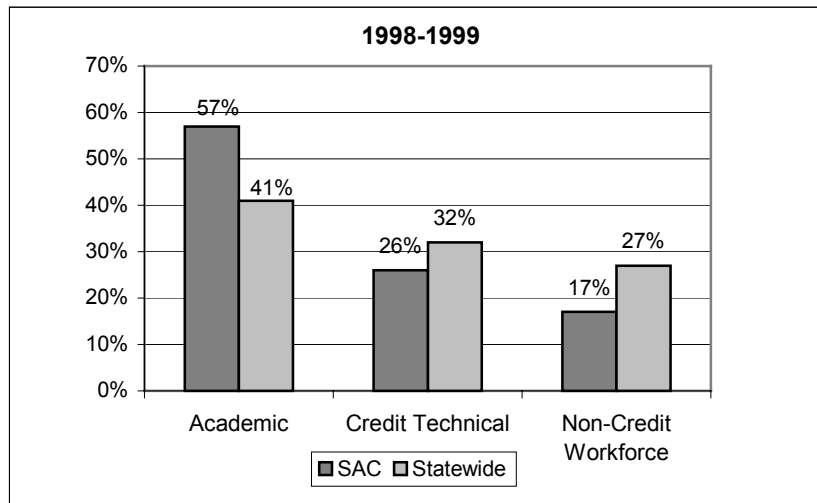
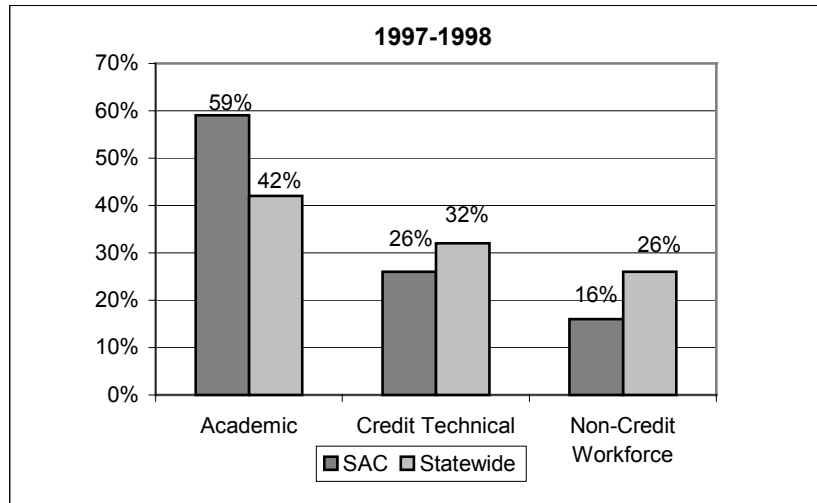
**San Antonio College**



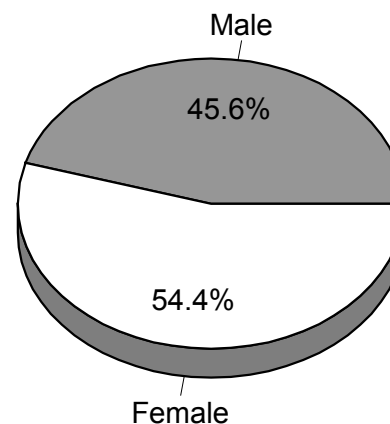
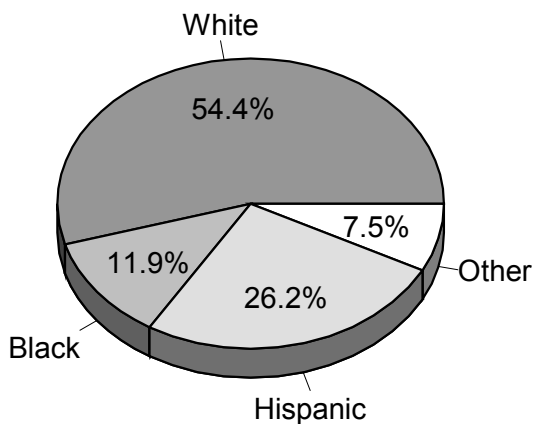
Source: THECB Texas Public Community and Technical Colleges Statewide 1999-2001 Fact Books



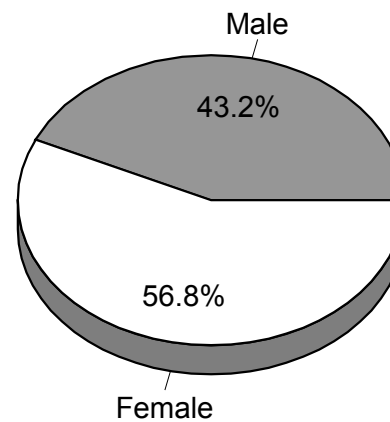
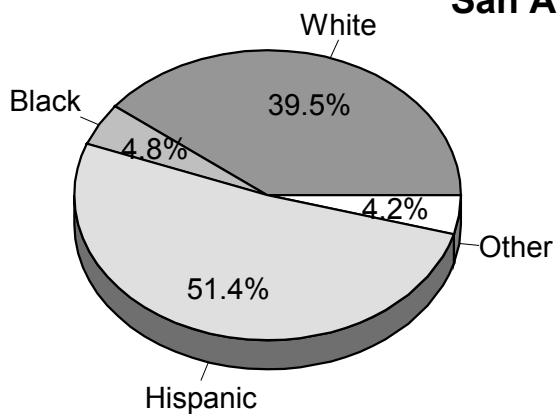
**UNDUPLICATED NUMBER OF STUDENTS ENROLLED AT ANY TIME DURING ACADEMIC YEARS 1997-1998 TO 1999-2000 BY TYPE OF MAJOR**



**Statewide**



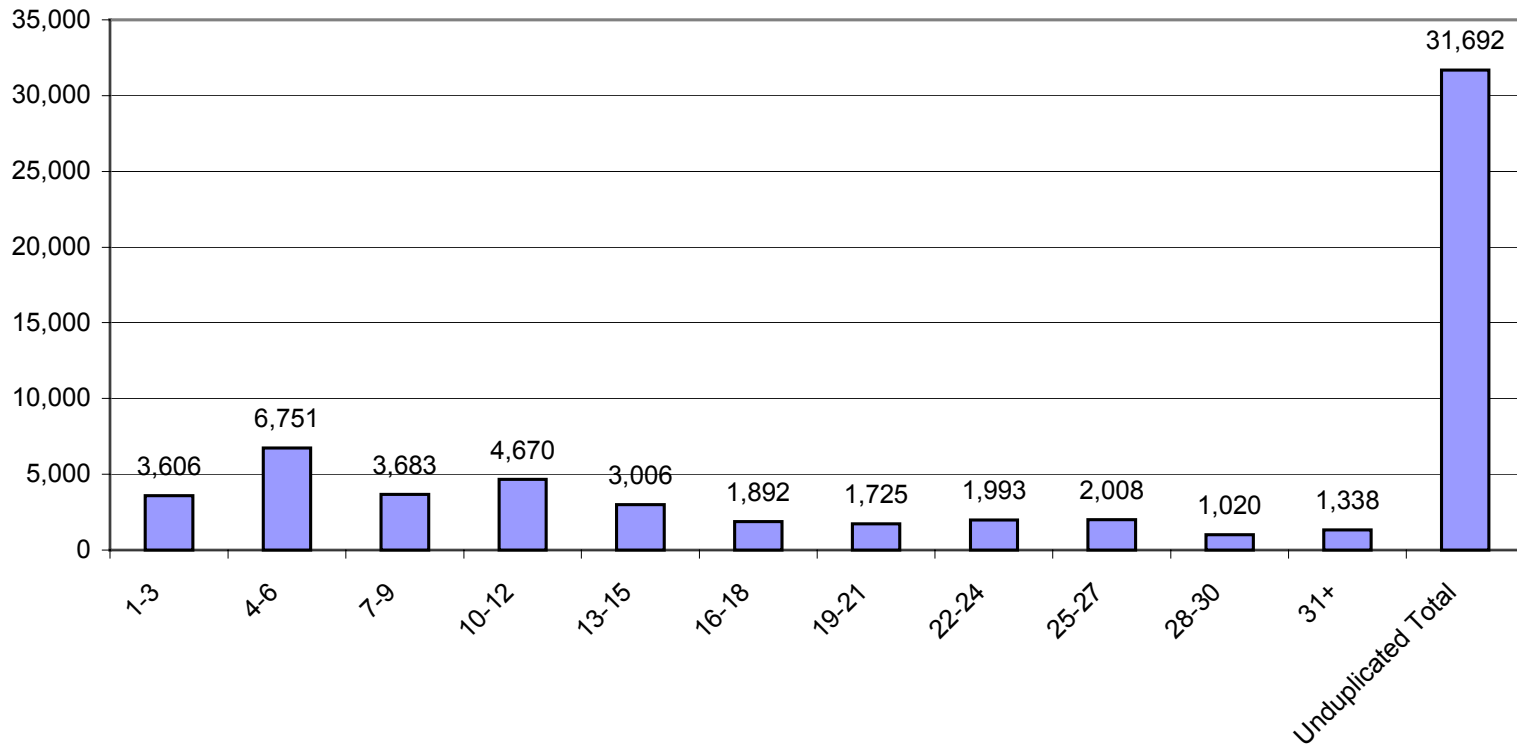
**San Antonio College**



SOURCE: Texas Public Community and Technical Colleges Statewide 2001 Fact Book

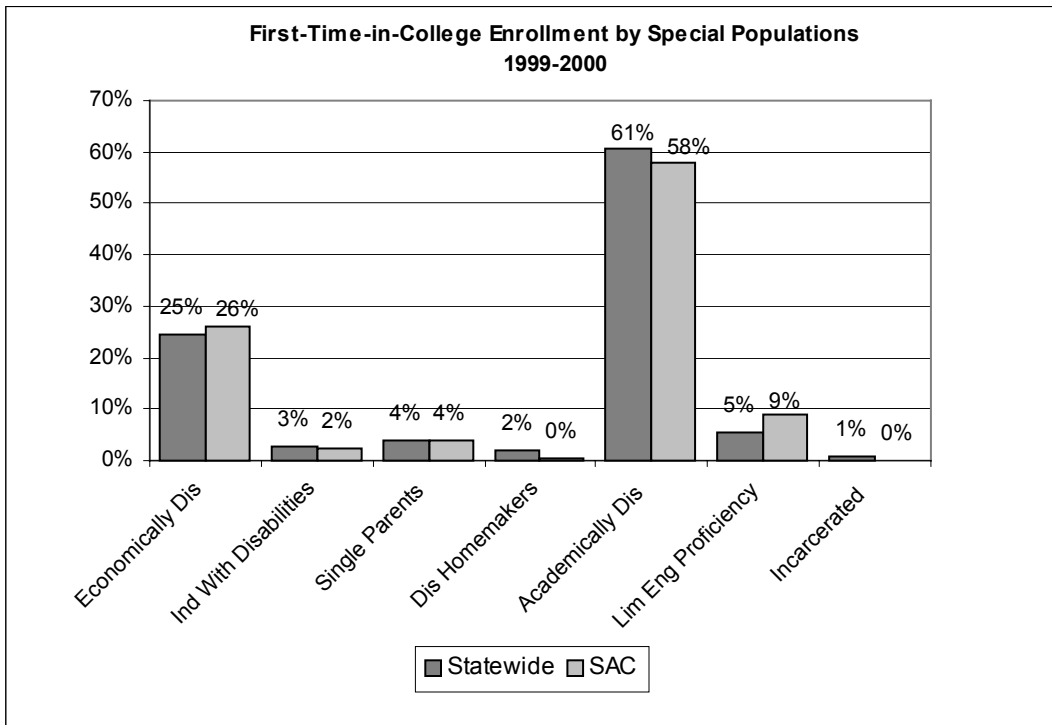
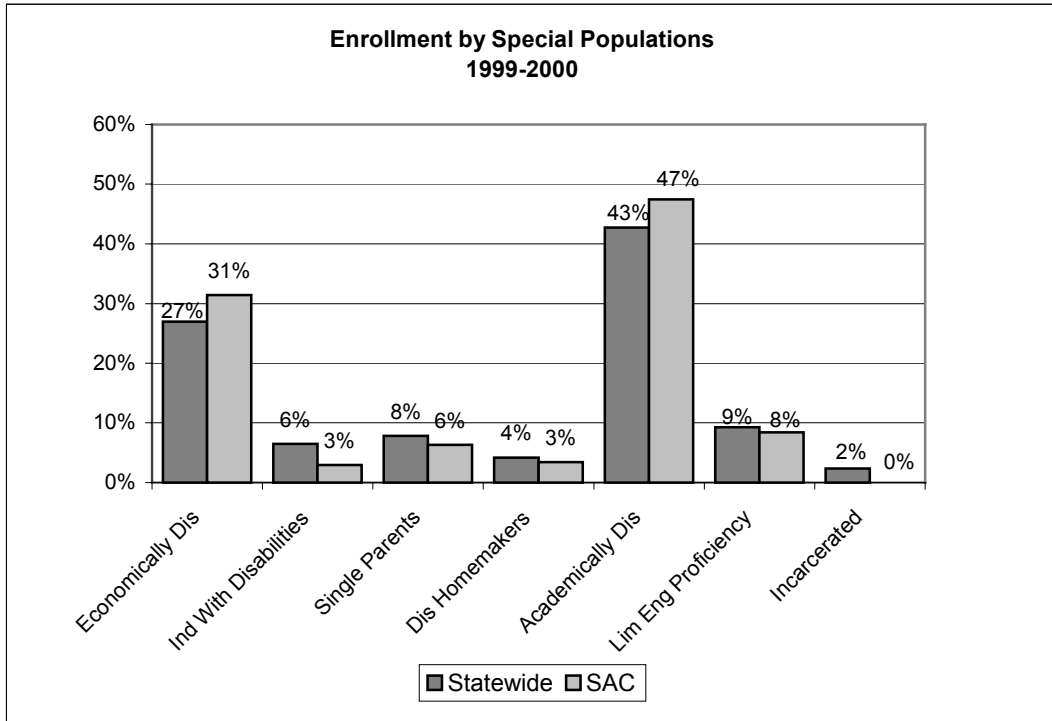
UNDUPLICATED NUMBER OF STUDENTS ENROLLED AT ANY TIME DURING THE ACADEMIC YEAR 1999-2000 BY ETHNICITY AND GENDER

UNDUPLICATED NUMBER OF CREDIT STUDENTS BY NUMBER OF HOURS ENROLLED 1999-2000 (SAN ANTONIO COLLEGE)

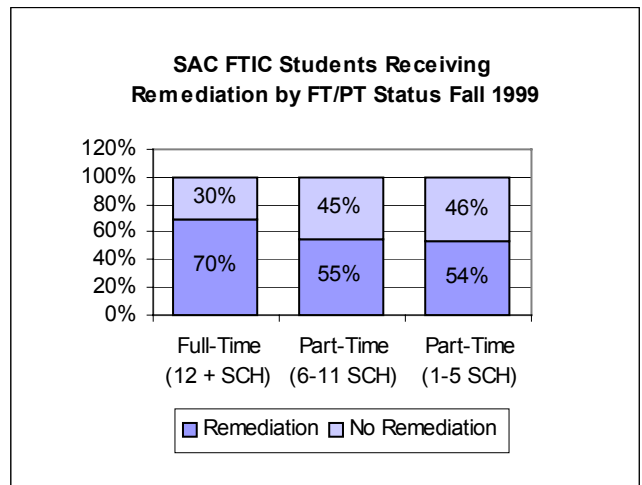
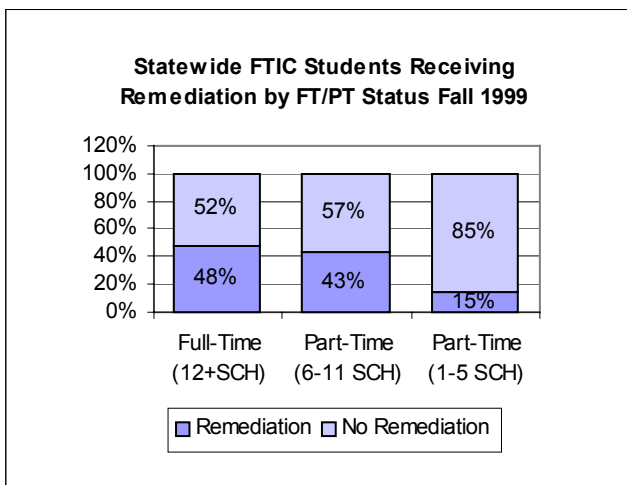
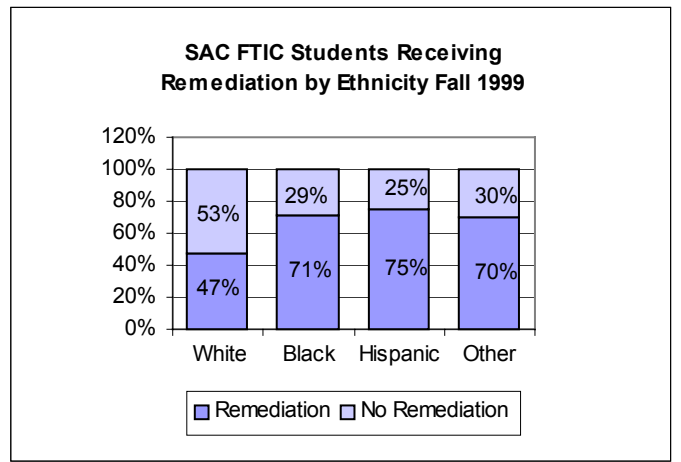
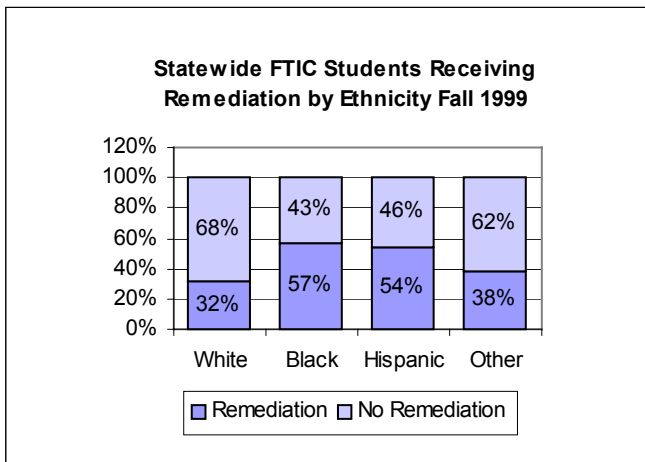
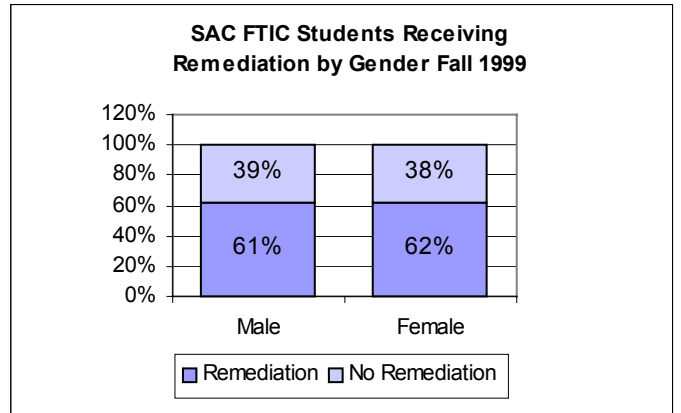
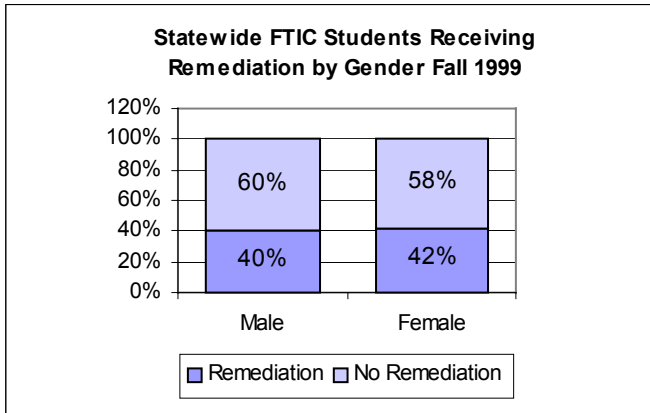


SOURCE: Texas Public Community and Technical Colleges Statewide 2001 Fact Book

**ENROLLMENT BY SPECIAL POPULATIONS 1999-2000**



**FIRST TIME IN COLLEGE STUDENTS  
RECEIVING REMEDIATION – FALL 1999**



**COHORT PROGRESSION ANALYSIS OF FTIC STUDENTS  
BY TYPE OF MAJOR FOR YEARS OF 1995-1997**

**FALL 1995**

	ALL FTIC					ACADEMIC FTIC					TECHNICAL FTIC				
	Total	Transferred Through Fall 1998	%	Graduated Through Summer 1998	%	Total	Transferred Through Fall 1998	%	Graduated Through Summer 1998	%	Total	Transferred Through Fall 1998	%	Graduated Through Summer 1998	%
San Antonio College	3,797	880	23%	78	2%	2,860	752	26%	32	1%	937	128	14%	46	5%
Texas Community and Technical Colleges	93,100	28,018	30%	7,568	8%	58,018	21,485	37%	3,065	5%	35,082	6,533	19%	4,503	13%

**FALL 1996**

	ALL FTIC					ACADEMIC FTIC					TECHNICAL FTIC				
	Total	Transferred Through Fall 1999	%	Graduated Through Summer 1999	%	Total	Transferred Through Fall 1999	%	Graduated Through Summer 1999	%	Total	Transferred Through Fall 1999	%	Graduated Through Summer 1999	%
San Antonio College	3,891	987	25%	72	2%	2,910	852	29%	31	1%	981	135	14%	41	4%
Texas Community and Technical Colleges	96,262	29,651	31%	7,801	8%	59,704	22,513	38%	2,981	5%	36,558	7,138	20%	4,820	13%

**FALL 1997**

	ALL FTIC					ACADEMIC FTIC					TECHNICAL FTIC				
	Total	Transferred Through Fall 2000	%	Graduated Through Summer 2000	%	Total	Transferred Through Fall 2000	%	Graduated Through Summer 2000	%	Total	Transferred Through Fall 2000	%	Graduated Through Summer 2000	%
San Antonio College	4,258	1,259	30%	85	2%	3,248	1,108	34%	37	1%	1,010	151	15%	48	5%
Texas Community and Technical Colleges	99,573	32,344	32%	7,560	8%	63,840	24,740	39%	3,302	5%	35,733	7,604	21%	4,258	12%

**CONTENTS – PERSONNEL PROFILE**

FACULTY

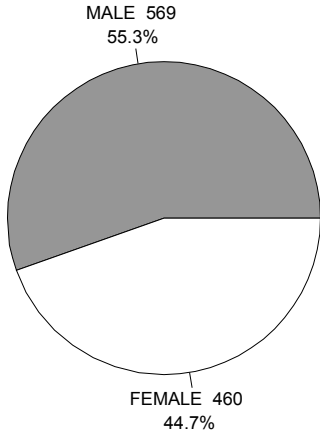
Faculty Profile (Gender, Ethnicity, Age, Highest Degree Earned, Contact Hrs & Sections Taught), Fall 2001 ..... 59  
Full-Time Faculty, Fall 2001 ..... 60  
Faculty Rank, Fall 2001 ..... 60

FULL-TIME EMPLOYEES

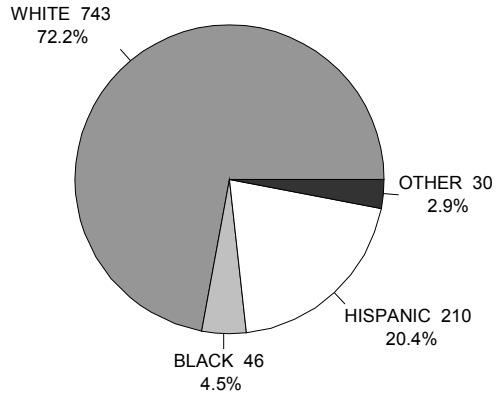
Full-Time Employee Profile, Fall 2001 ..... 61  
By Gender & Classification, Fall 2001 ..... 61  
By Ethnicity & Classification, Fall 2001 ..... 61

**FACULTY PROFILE – FALL 2001**  
**1,029 TOTAL FACULTY**

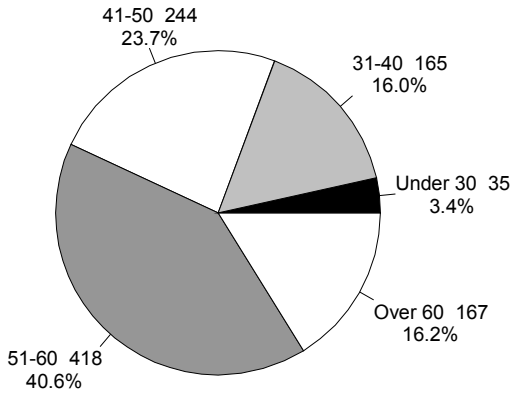
**GENDER**



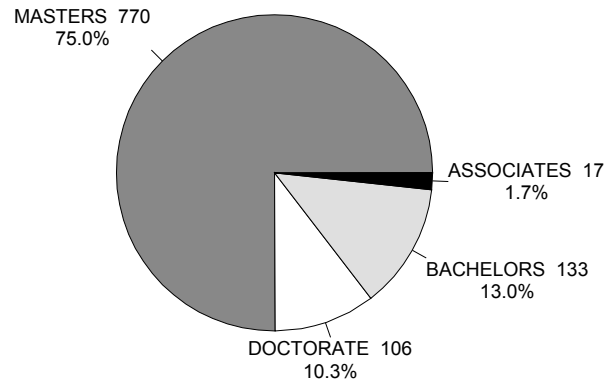
**ETHNICITY**



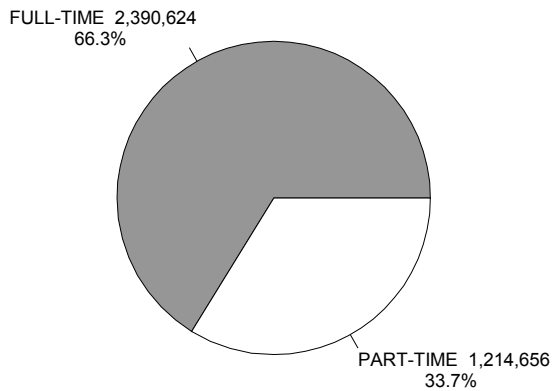
**AGE**



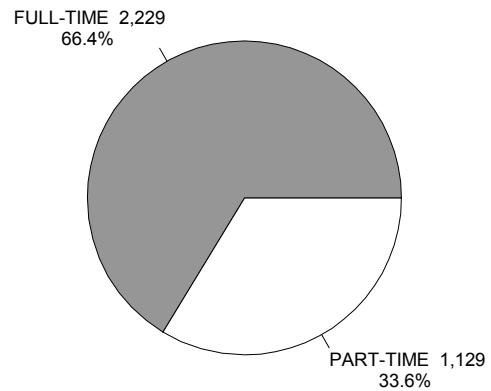
**HIGHEST DEGREE EARNED**



**CONTACT HOURS TAUGHT**



**SECTIONS TAUGHT**





## FULL-TIME FACULTY – FALL 2001

	WHITE	BLACK	HISPANIC	OTHER	TOTAL
<b>FEMALE</b>	139 32.3%	11 2.6%	44 10.2%	5 1.2%	199 46.2%
<b>MALE</b>	169 39.2%	7 1.6%	47 10.9%	9 2.1%	232 53.8%
<b>TOTAL</b>	308 71.5%	18 4.2%	91 21.1%	14 3.2%	431 100.0%

SOURCE: HFA945, 01/29/02

Note: Percents are percents of total

## FACULTY RANK – FALL 2001

RANK	NUMBER	PERCENT
<b>PROFESSOR</b>	114	11.1%
<b>ASSOCIATE PROFESSOR</b>	52	5.0%
<b>ASSISTANT PROFESSOR</b>	48	4.7%
<b>INSTRUCTOR</b>	113	11.0%
<b>LECTURER</b>	2	0.2%
<b>ADJUNCT FACULTY</b>	700	68.0%
<b>VISITING TEACHER</b>	0	0.0%
<b>TOTAL</b>	1,029	100.0%

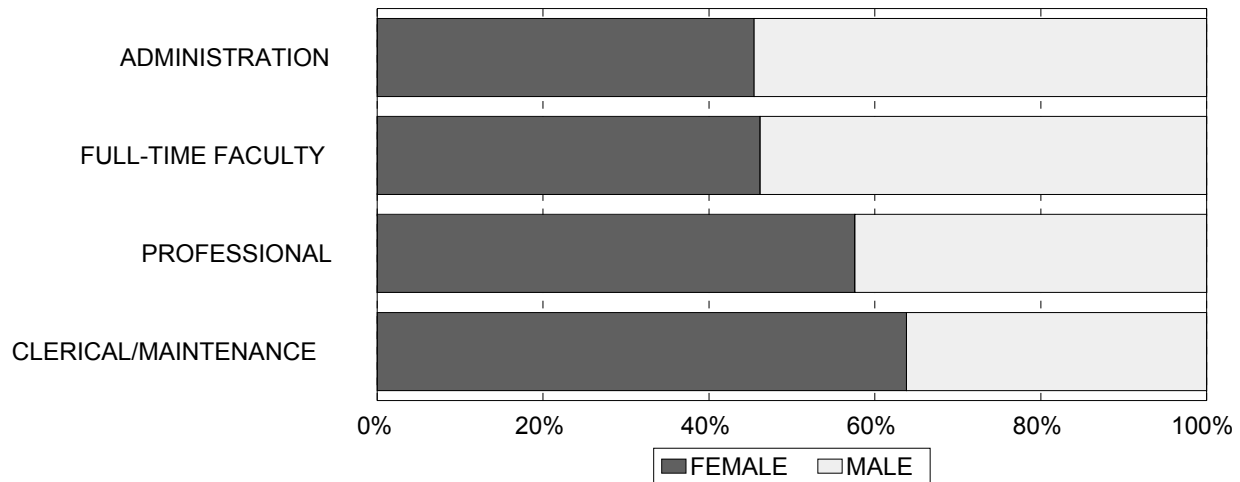
SOURCE: CBM008, 11/16/01

Includes both tenure-track and adjunct faculty

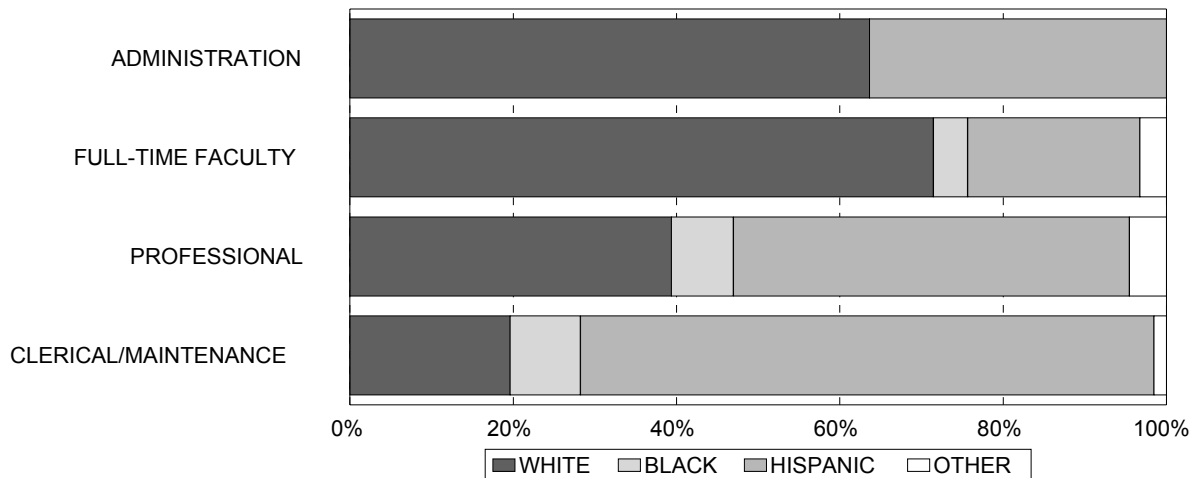
**FULL-TIME EMPLOYEE PROFILE – GENDER & ETHNICITY FALL 2001**

TYPE	WHITE	BLACK	HISPANIC	OTHER	FEMALE	MALE	TOTAL
Administrators	7 63.6%	0 0.0%	4 36.4%	0 0.0%	5 45.5%	6 54.5%	11 100%
Tech/Clerical/ Maintenance	64 19.6%	28 8.6%	229 70.2%	5 1.5%	208 63.8%	118 36.2%	326 100%
Full-time Faculty	308 71.2%	18 4.2%	91 21.1%	14 3.2%	199 46.2%	232 53.8%	431 100%
Professional	26 39.4%	5 7.6%	32 48.5%	3 4.5%	38 57.6%	28 42.4%	66 100%
<b>TOTAL</b>	405 48.6%	51 6.1%	356 42.7%	22 2.6%	450 54.0%	384 46.0%	834 100%

**EMPLOYMENT BY GENDER & CLASSIFICATION FALL 2001**



**EMPLOYMENT BY ETHNICITY & CLASSIFICATION FALL 2001**



SOURCE: HFA945, 1/29/02

**CONTENTS – FINANCIAL PROFILE**

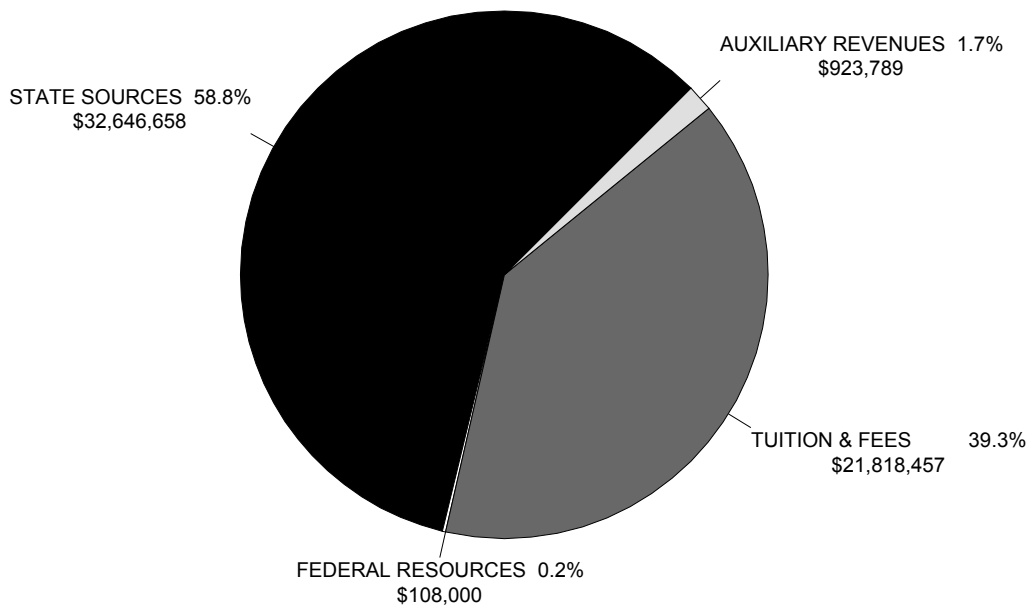
Tuition and Fees 2001-2002 ..... 63  
Base Revenues 2001-2002..... 63  
Summary of Revenue for 2001-2002..... 64  
Summary of Expenditures for 2001-2002..... 64

ACCD 2001-2002 TUITION & FEES \*

SEMESTER HOURS TAKEN	TEXAS RESIDENTS				NON-TEXAS RESIDENT/INTERNAT'L STUDENTS	
	IN-DISTRICT		OUT-OF-DISTRICT		TUITION	GEN FEE
	TUITION	GEN FEE	TUITION	GEN FEE		
1 – 6	\$131.50	\$60	\$241.50	\$60	\$471.50	\$60
7	185.50	65	339.50	65	661.50	60
8	212.00	65	388.00	65	756.00	65
9	238.50	65	436.50	65	850.50	65
10	265.00	65	485.00	65	945.00	65
11	291.50	65	533.50	65	1039.50	65
12	318.00	65	582.00	65	1134.00	65
13	344.50	65	630.50	65	1228.50	65
14	371.00	65	679.00	65	1323.00	65
15	397.50	65	727.50	65	1417.50	65
16	424.00	65	776.00	65	1512.00	65
17	450.50	65	824.50	65	1606.50	65
18	477.00	65	873.00	65	1701.00	65
19	503.50	65	921.50	65	1795.50	65
20	530.00	65	970.00	65	1890.00	65
21	556.50	65	1018.50	65	1984.50	65

\*As of Fall 2001 Semester

2001-2002 SAN ANTONIO COLLEGE BASE REVENUES



SOURCE: 2001-2002 ACCD Operating Budget Summary

## SUMMARY OF REVENUES, 2001-2002

<b>SAN ANTONIO COLLEGE REVENUES</b>	
State Sources	\$32,646,658
Federal Sources	\$108,000
Tuition	\$16,194,675
Lab & Other Fees	2,233,004
General Fees	3,390,778
Total Tuition and Fees	\$21,818,457
Total Educational & General Revenue	\$54,573,115
Auxiliary Enterprises	\$923,789
<b>GRAND TOTAL REVENUES</b>	<b>\$55,496,904</b>

SOURCE: 2001-2002 ACCD Operating Budget Summary

## SUMMARY OF EXPENDITURES, 2001-2002

<b>SAN ANTONIO COLLEGE EXPENDITURES</b>	
<b>PERSONNEL:</b>	
Regular	\$28,934,051
Temporary Lecturer and Part-time Faculty	12,200,266
Temporary Other	1,552,940
<b>TOTAL PERSONNEL</b>	<b>\$42,687,257</b>
<b>GENERAL:</b>	
Travel	162,409
Employment Development	2,083
Basic Telephone Services	185,468
Instructional Printing	111,722
Lab Supplies and Expenses	148,853
General Expenses	2,320,451
Fringe Benefits	4,363,419
Scholarships	99,949
Mandatory Transfers	215,625
<b>TOTAL GENERAL</b>	<b>\$7,609,979</b>
Fixed Assets	\$155,000
Capitalized Instructional Equipment	1,035,483
Library Books	565,000
Computer Services	799,248
<b>TOTAL EXPENDITURES AND TRANSFERS</b>	<b>\$52,851,967</b>

SOURCE: 2001-2002 ACCD Operating Budget Summary

**Office of Institutional Effectiveness  
San Antonio College  
1300 San Pedro Avenue  
San Antonio, Texas 78212  
(210) 733-2105**

The Alamo Community College District, including its affiliate colleges, does not discriminate on the basis of race, religion, color, national origin, sex, age or disability with respect to access, employment, programs or services.