

Student Success Newsletter

St. Philip's College, 1801 Martin Luther King Dr., San Antonio, TX 78203
St. Philip's College - Southwest Campus, 800 Quintana Rd., San Antonio, TX 78211

Important June Dates

- June 1st: Last day to register online (SU1, S82, SUT)
- June 6th: Last day to withdraw online for 100% refund (SU1, S82, SUT)
- June 15th: Last day to register online (S83)
- June 20th: Last day to withdraw online for 100% refund (S83)

Summer 2021 Hours of Operation (May 31st - July 23rd)

Mondays-Thursdays	7:00 AM - 7:00 PM
Fridays	Closed

Message from our Vice President:

Greetings, St. Philip's College Tigers! The month of June signifies the beginning of summer session, which means that several of you are taking advantage of our Summer Momentum Plan. Students, be sure to meet with your Certified Advisor to ensure YOU are on the proper pathway towards program completion and/or transferability.

Mordecai Ian Brownlee, Ed.D.
Vice President for Student Success
St. Philip's College

AlamoCARES

For more information contact Dr. Mordecai Brownlee, Vice President for Student Success, at 210-486-2252.

If you believe you have experienced Sexual Misconduct, you may consider the following options:

- **Contact Campus Police** at 210-485-0099 (non-emergency) or 210-485-0911 (emergency).
- **Seek medical attention** at a hospital or with a physician.
- **Report the incident** at www.alamo.edu/TitleIXCoordinator/ (or call John Martin 210-486-2746).
- **Contact SPC Counseling Services** at 210-486-2333 (for confidential counseling and or referrals).
- **Contact parents, relatives or close friends for support.**

SPC Back To Campus Plan!

The health and wellness of students, faculty, and staff of Alamo Colleges District is our highest priority.

Visit link below for more details and resources:

<http://bit.ly/SPCreturn>

ATTENTION STUDENTS!

All entering freshmen, former and transfer students are required to complete "**Sexual Assault Prevention for Community Colleges**" training before the end of their first semester of classes at St. Philip's College. Students receive an email invitation in their ACES email inbox after the 12th day of class. The subject line will read: "Sexual Assault Prevention for Community Colleges." The **student must complete the training by March 31, 2021 to avoid a registration hold on their account.**

Note: To ensure you do not have a Registration Hold on your record, log in to ACES --> Student Menu (on left) --> Web Services --> Student tab (top) --> Student Records --> View Holds.

If you have a Title IX hold, email John Martin at jmartin139@alamo.edu. Include your full name, Banner ID# and contact information for prompt response.

Academic Advising

For more information, contact at spc-advising@alamo.edu

Tiger Nation thrives in Advising! Advising Services are online. Schedule an appointment with your Certified Advisor via Alamo NAVIGATE. Learn more at <https://www.alamo.edu/spc/academics/academic-resources/academic-advising/>.

Zoom Advising Instructions in Alamo NAVIGATE: Log in to your ACES Account --> Click on the "Start Here" tab --> Select the "Alamo NAVIGATE" icon --> Click "Login" --> Select the "Appointments" tab --> Select "Schedule an Appointment" --> Select the Reason for your appointment and hit Next --> Select the Location and hit Next --> Select the day and time that works for you and hit Next --> Enter "Zoom Appointment" in the Notes box --> Review the selection and confirm your appointment.

	Maymester (MM)	Summer I 8 Week (S81)	Summer I (SU1)	Summer II 8 Week (SU8/S82)	Summer 10 Wk (SUT)	Summer III 8 Week (S83)	Summer II (SU11)
Enrollment Management Period **	May 12-15, 2021	May 12-15, 2021	June 2- June 5, 2021	June 2- June 5, 2021	June 2- June 5, 2021	June 16-19, 2021	July 7-10, 2021
Classes Begin	May 17, 2021	May 17, 2021	June 7, 2021	June 7, 2021	June 7, 2021	June 21, 2021	July 12, 2021
Smart Start	May 17, 2021	May 17, 2021	June 7, 2021	June 7, 2021	June 7, 2021	June 21, 2021	July 12, 2021
Schedule Changes	May 16-17, 2021	May 16-18, 2021	June 6-8, 2021	June 6-8, 2021	June 6-8, 2021	June 20-22, 2021	July 11-13, 2021
Census Dates	May 18, 2021	May 24, 2021	June 10, 2021	June 15, 2021	June 24, 2021	June 29, 2021	July 15, 2021

Summer 2021 Drop-in Advising Services (online) for new students:

Monday 1:00 PM - 5:00 PM (<https://alamo.zoom.us/j/93709178380>)
Thursday 9:00 AM - 1:00 PM (<https://alamo.zoom.us/j/93709178380>)

A New Way to Register!

The Alamo Colleges has launched a new and improved registration tool! The tool offers a modern interface, improved search capabilities, and more. Using the new tool, students can:

- Prepare for registration
- Synchronize existing degree plans
- View past schedules
- Browse classes and the course catalog
- Register for classes

Students needing assistance with the new registration tool are encouraged to visit <http://bit.ly/ACCDregistration> to watch a how-to video or contact their advising center for additional assistance.

New Student Orientation (NSO): NSO is mandatory for all First Time in College, Returning, and Transfer students. NSO is remote on a Canvas platform and accessible via your ACES portal within 2-3 business days upon successful completion of the Online Registration Form. The preferred browser for the course is Google Chrome. Students must have a current/active admissions application on file to register and participate in the Canvas course. Visit <https://www.alamo.edu/spc/academic/academicresources/academic-advising/new-student-orientation/>. (Group Advising for new students available after completion of NSO to help with initial enrollment)

Payment Deadlines

Summer 2021 (remaining terms)
Saturday, June 5th

After Due Date, Payment Arrangements Due at Registration Purge for non-payment will run on Sundays unless otherwise noted

Ask your Advisor about **FREE CREDITS** from the Summer Momentum Plan! Visit <https://bit.ly/2O3jYwR> for more details

Bookstore

For more information, contact Jorge Marines at 210-534-8024 or visit <https://bit.ly/3szvjUy>. Students can purchase course material through our website. Contact them Monday-Thursday (9am-5pm), and Friday (9am-1pm) by phone, or email (stphilips@bkstr.com) to inquire about textbook options, downloads, and discounts.

Business Office

For more information, contact Sofia Zavala at 210-486-2247 or dst-vbo2@alamo.edu.

We can answer questions about billing, Academic and Continuing Education Payment Plans, or tuition discounts and waivers. Provide your name, telephone number, email address, and Banner ID when calling or emailing.

Appointment Links & Emails

Visit <https://bit.ly/3flLh0z> for a list of departments with remote services requiring scheduled appointments.

Featured Experiences



Spurs Sports & Entertainment

- [Talent Academy Professional Internship](#)
- [Talent Academy Associate](#)



St. Philip's College

St. Philip's College

- [Student Engagement Grants](#)
- [Private Sector Work-study](#)



City Internships (not city of San Antonio)

- [In-person opportunities](#)
- [Remote Opportunities](#)



Hispanic Association of Colleges and Universities

- [Internship opportunities](#)
- [Corporate Internships](#)

Career Readiness and Experiential Learning Services

For more information, contact Nathaniel Martinez at 210-486-2351 or via email at nmartinez324@alamo.edu.

Reach out to explore Experiential Learning opportunities that include field experience, co-curricular, extracurricular, service learning, and/or service learning activities intended to extend real-world learning beyond the classroom and to help connect students with their intended profession early in their academic careers.

CRELS serves SPC by collaborating with internal departments and external employer partners to conduct Experiential Learning events/activities while assisting students, faculty, and staff with documenting their Experiential Learning activities to include in their AlamoEXPERIENCE Transcript.

Please visit <https://www.alamo.edu/experience> for more information about the AlamoEXPERIENCE Transcript and to explore current Experiential Learning opportunities.

Centers of Excellence for Math & Science

For more information contact Maria Rodriguez at 210-486-7123, or Dr. Jo Dee Duncan at 210-486-7121

Students can apply for stipends of up to \$2,500 for STEM related research projects and outreach programs. Opportunities exist year-round and can range from single day events to 8-week programs. Please visit bit.ly/SPC_COE to review all available opportunities coordinated through the Center of Excellence, and see below for upcoming summer opportunities:

Student Instructional Assistants (SIAs)
Virtual Science and Math Summer Academy (SAMSA)
July 2021

Student Research Assistants (SRAs)
Virtual Reality Initiative: design software packages which use Virtual Reality in educational settings.

Students must have SPC as their home campus and a GPA of at least 3.0. Please reach out to department contacts listed above or to the Career and Experiential Learning Center to have the application emailed to you

Child Development Center

For more information, contact Monica Guzman at 210-486-2501.

The Child Development Center has limited childcare spots for virtual classes this semester. We also provide parenting support for student-parents. Those interested in subsidized off-campus care with a partner childcare program may contact us (210)486-2500, or email mguzman15@alamo.edu. Eligibility and payment information is at <https://www.alamo.edu/spc/child-dev-center>.

City Workforce Recovery Program

For general job placement assistance contact Workforce Solutions Alamo at 210-224-4357 or visit www.workforcesolutionsalamo.org.



Train for Jobs-SA offers training and education to eligible San Antonio residents displaced due to the COVID-19 pandemic. The program helps get people back to work, offers stipends, provides skills and career assessments, GED preparation, and on-the job training. Students in the program can earn \$15 an hour, to a maximum of \$450 a week this semester. See <https://www.alamo.edu/sarecovery> for more details!

Counseling Services

For more information, contact Eitandria Tello at 210-486-2378.

We provide counseling support via Zoom. Call the Alamo Colleges Helpline (210-486-1111) to schedule an appointment. Always provide your name, telephone number, and Banner ID. Please visit <https://bit.ly/3u1MhLB> for additional information and resources.

Texas Health & Human Services provides statewide crisis help. View online resources, or talk to someone at Mental Health Texas (1-800-273-8255, TTY: 1-800-799-4889, <https://mentalhealthtx.org/>). In case of an emergency call The Center for Healthcare Services Crisis Hot Line at 210-223-7233, or dial 9-1-1.

Disability Services

For more information, contact Maria Botello at 210-486-2199 or 210-486-2411

The disability services office provides reasonable accommodations to eligible students. Please contact us at 210-486-219 or by email at spc-dss@alamo.edu for questions and guidance. We encourage you to visit our website to review the process for TSI, Registration and Enrollment, TEAS, and Classroom Accommodations at www.alamo.edu/spc/disability-services.



Do you have something to share, like a great experience with a service, or perhaps you want something addressed? You can do that with our "Feed the Tiger" form. We want to hear from you and address your concerns. Click on the orange button at <http://spcweb.alamo.edu/feedback/index.html>.

Financial Aid Office

For more information contact Grace Zapata 210-486-2269.

Contact us at **210-212-5266** or via email dst-sfs@alamo.edu. Include your Banner ID when contacting us. Inquire about FA applications, direct loan requests, FA appeals, and more. See [priority dates and deadlines](#). **Financial Aid TV is available 24/7**. Get your questions answered with **FaTV**. We are here to help!

First time in college students can reach out to SPC College Connection staff at 210-486-2150 or via email SPC-recruit@alamo.edu for assistance in completing the FAFSA to ensure it matches with ApplyTexas application.

Good Samaritan Veteran's Outreach & Transition Center

For more information, contact us at spc-gsvotc@alamo.edu or at 210-486-2185.

We provide free services to active duty service members, veterans, their families and the community. Call us Monday-Friday (8am-5pm). Visit <https://www.alamo.edu/spc/about-spc/college-offices/gsvotc/>.

International Student Services

For more information, contact Meredith Bess, 210-486-2147.

Find resources for F-1 and M-1 visa holders at <https://www.alamo.edu/spc/admissions/specificpopulations/international-student-services/>.

Let's Be Resilient!!!

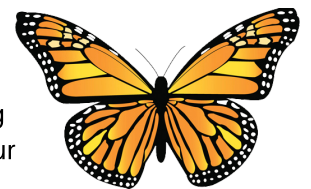
Visit bit.ly/SPCresiliency to learn about what it means to be resilient and ways to build up your resiliency skills.

VIA Bus U-Pass

Available to Alamo Colleges Students and Employees

The **U-Pass** gives you access to unlimited bus rides on VIA through-out the semester -- with free high-speed Wi-Fi on all buses and transit centers, you can spend more time reading, studying, checking e-mails and staying connected. Learn more at www.alamo.edu/via.

Use the **VIA goMobile Mobile Pass (preferred)** using your student or employee email address. Visit www.viainfo.net/purchase-passes/.



If you need assistance in applying for college, State Aid (TAFSA), and/or scholarships, then contact the nearest Community Education & Training Center near you to schedule an appointment:

Brackenridge (Eastside) Center
(210) 485-0280

Harlandale (Southside) Center
(210) 989-5999

www.alamo.edu/district/daca

Library Resources and Services

For more information, contact April Schramm (210-486-2357) or Susan McClellan (210-486-2330).

Our Website has undergone a face-lift! Come by and check it out at <https://www.alamo.edu/spc/library>. The Library offers virtual reference services (see Library Virtual Hours). If you need reference assistance, use our ASK US feature and chat service found at the top of our homepage

Resources: See our [Distance Education Student Resources Guide](#) and [SPC Coronavirus Resource Guide](#) with resources on all-things-COVID-19, as well as fun activities for families and children.

Social Media: See more of St. Philip’s College Library on Facebook: <https://www.facebook.com/St-Philips-CollegeLibrary-103458268027093/> and Twitter: <https://twitter.com/Spclibraryspc>.

SPC Archives: We are gathering documentation on how the SPC community is responding to the COVID-19 pandemic, and you can help! If you are keeping a record of your experience working and/or learning remotely, or have any documentation that reflects the current situation, please consider sharing it with the SPC Archives. Contact Rebecca Barnard at 210-486-2583 or rbarnard3@alamo.edu to contribute.

Math Labs

For more information contact Renita Mitchell at 210-486-2607

Virtual MathWorld: Remote tutoring services are available for our students in developmental MATH courses, as well as MATH 1314, 1332, 1350, 1351, 1414, 1442, 2412 and 2413. Access Virtual Math World by clicking on the link (provided by your instructor) within your math Canvas course. Here you will find our schedule of Zoom tutoring drop-in sessions. Learn more or rate our services at <https://www.alamo.edu/spc/academics/academic-resources/tutoring-centers/mathworld/>, or contact Pete Perez at 210-486-2893 (pperez198@alamo.edu).

Military Support Services

For more information, contact Betsy Hamilton at 210-486-2610 or email dst-military@alamo.edu

Phone Support at the following numbers: (Monday-Friday from 0800-1700)

General Information	Mrs. Sarai Carpenter	(210) 486-2001	https://www.alamo.edu/spc/mss
Fort Sam Students	Ms. Allison Joubert	(210) 486-2004	https://www.alamo.edu/fortsam
Lackland Students	Mr. Javier Barron	(210) 486-7224	https://www.alamo.edu/lackland
Randolph Students	Mrs. Cynthia Jaime	(210) 486-2901	https://www.alamo.edu/randolph

Air Force General Education Mobile (GEM) Program: St. Philip’s College is an original and continuing participating college in the GEM program. Register for pre-approved SPC online courses to complete your CCAF degree. Ask your Air Force Education counselor about GEM! For more information visit www.alamo.edu/gem.

Military Spouse Scholarship Program (MyCAA): The My Career Advancement Account Scholarship Program is a workforce development program that provides up to \$4,000 of financial assistance for licenses, certifications, or Associate’s degrees to pursue an occupation or career field. To see if you qualify visit www.alamo.edu/mycaa.

Web Session Wednesdays with MSS! Through 14 May, Military Support Services is offering free information sessions each Wednesday from 1400-1500 in Zoom on topics relevant to our military and veteran-connected community. Topics include but are not limited to, financial aid, how to effectively research online, the military spouse scholarship program (MyCAA), Healthcare and LVN/Military to A.D.N. programs, military to civilian resume writing, IT and cybersecurity careers, and career and job market research. Join us for a topic each day in May during Armed Forces Week! Visit our webpage to view the full schedule at <https://www.alamo.edu/spc/mss>.

Project Quest (tuition assistance)


For more information contact Yolanda Williams at 210-630-4691

We offer financial assistance and training in healthcare, manufacturing and trades, and information technology for eligible residents. We provide financial resources, guidance, and job placement. We can help you achieve your educational and career goals. Visit <https://www.questsa.org/> for more details and apply today!


**Maymester/Summer I
Virtual Hours:**

Monday – Thursday: 7:00 am – 7:00 pm
Friday: Closed
Saturday: Closed

Hours are subject to change. Refer all inquiries to our [ASK US](#) feature



“EARN WHILE YOU LEARN”



- ✓ Flexible Work Schedule
- ✓ Earn Tax Free Compensation
- ✓ Friendly, Laid Back Environment
- ✓ Networking and Learning Opportunities
- ✓ Earn Volunteer Hours
- ✓ Start Building Your Resume

The San Antonio Vet Center is currently looking for eligible students to work at our **NORTHEAST** location at 9504 N. Interstate 35 Ste. 214 SA, TX 78233.

If you're a 3/4-time or full-time student in a college degree, vocational, or professional program, and are using a VA Education Benefit you can “earn while you learn” with a VA work-study allowance.

VA Educational Benefits include:

- Chapter 30 (Montgomery GI Bill – Active Duty)
- Chapter 31 (Vocational Rehabilitation)
- Chapter 32 (Veterans Educational Assistance Program)
- Chapter 33 (Post-9/11 GI Bill)
- Chapter 35 (Dependents Educational Assistance)
- Chapter 1606 (Montgomery GI Bill – Selected Reserve)
- Chapter 1607 (Reserve Educational Assistance Program)
- Transfer of Entitlement Program (Parent or Spouse entitled to benefits)

CONTACT US TODAY! : (210) 650-0422

Jennifer.Echeverry@va.gov or Raymond.Kaloplastos@va.gov

Records, Registration, and Transcripts

For more information, contact Tracy Shelton at tshelton@alamo.edu.

Visit <https://www.alamo.edu/spc/experience-spc/current-students/records-and-transcripts/> to find enrollment forms or to request transcripts. Incomplete "I" grades are in the [spring 2021 Academic Calendar](#). To schedule an appointment for Academic Fresh Start, Conditional Admissions, Early Admissions, and more send email to spc-records@alamo.edu. Always include your name, banner number, email address, and telephone number. Contact us at 210-212-5266 to let us know how we can help!

Safe SPACE (Student Advocacy Center)

For more information, contact Advocacy Hotline at (210)486-1111.

We provide resources for food and social services assistance, and possible access to a one-time emergency aid program. For more information, contact Sasha Wilhelm via email at awilhelm3@alamo.edu. Always provide your name, telephone number, and Banner ID.

Upcoming Pop-Up Markets at St. Philip's College:

Thursday, June 17 | 3pm-5pm | Parking lots 22/23

Registration is required at SAFB 210-431-8326. View distribution calendar at <https://www.alamo.edu/advocacy>. Students or partners can volunteer at <https://www.alamo.edu/volunteer-form/>.



Important Services and Resources:

- **Emergency Broadband Benefit Program** The Emergency Broadband Benefit Program is a Federal Communications Commission (FCC) program that provides a temporary discount on monthly broadband bills for qualifying low-income households. Visit <https://getemergencybroadband.org/> for more details
- **Texas Rent Relief (1-833-989-7368)**: Emergency funds to help renters pay rent and utility bills (including past due rent and utilities), visit <https://texasrentrelief.com/>.
- **U.S. Department of Housing & Urban Development:** <https://www.hud.gov/findshelter>; help for rental assistance, and resources for food pantries, health clinics, clothing, and shelter; San Antonio Field Office 210-475-6800 or 210-475-6806; online <http://hud.gov/texas>.
- **San Antonio Food Bank (210-431-8326)**: Their food pantries and mobile food distributions are open to the public. Find local options, or sign-up for state and federal benefits like SNAP. Pre-registration is required for citywide food distributions, home delivery, and rural distribution. To pre-register, or to browse the Meals for Kids distribution schedule and program rules, visit <https://safoodbank.org/cvresponse/>.
- **Utility and other bills:** City of San Antonio, Bexar County, SAWS and CPS. See Community Assistance Summary at https://media.wix.com/ugd/49c991_598a79d6f020473aba80ea8773381dae.pdf.
- **United Way-COVID-19 Resources and Assistance** (2-1-1, 210-227-4357, or 1-877-541-7905): Call or access the online [database](#). This free, anonymous social service hotline helps people find resources in their community (accessible 24/7 including holidays).

City of San Antonio Fair Housing/COVID-19 Emergency Assistance Program

San Antonio residents can call 210-207-5910 or 311 for information, or apply online at <https://www.sanantonio.gov/NHSD/Programs/FairHousing>. Eligible residents can get help with:

- Rent or mortgage payments
- Electricity and water bills
- Internet and phone bills
- Groceries, Medicine, Fuel

New: Get in-person help with the **Emergency Housing Assistance Program** application (by appointment) from:

- **Texas RioGrande Legal Aid** (TRLA) Ileana Rojas, 210-337-1525, ehap@trla.org (English/Spanish)
- Domesticas Unidas, Irasema Cavazos, 1-956-245-2657, cavazosirasema@gmail.com

and/or

COPS/Metro at these church locations:

- Divine Providence; Father Ryan Carnerer; frryancim@gmail.com
- St. Timothy; Natalie; sttimothyseiorcenter@yahoo.com
- Our Lady of the Angel; Father Bill Kraus; bill.kraus@capuchins.org
- Sacred Heart, Maria "Lupita" Valdez, mvaldeza63@gmail.com

Scholarship Office

For more information, contact Gloria Hernandez at 210-486-2498.



Submit your
application today!

Priority Application deadline:
April 5, 2021

Final Application deadline:
September 5, 2021

San Antonio Area Foundation Robert B. Taylor Scholarship: All students are encouraged to apply. Over 100 scholarship funds are available for graduating high school students and current college students.

Deadline: N/A

Scholarship Amount: Varies

Greater Texas Foundation Child Care Scholarship: Complete the application on the [scholarship website](#) if you can answer yes to each question: (1) Are you a single parent? (2) Do you have a child 0-12 years of age? (3) Are you enrolled in at least 12 semester hours? (4) Is your child enrolled in a day care facility?

Extended Deadline: March 2021

Scholarship Amount: Varies

Harvey Najim Pathways: Must be graduating from a high school in one of these ISD's: East Central, Edgewood, Harlandale, San Antonio, South San, Southside, Southwest, or Somerset. Pursue a degree in Cyber-Security, Information Technology, Nursing, or Respiratory Care.

Deadline: N/A **Scholarship Amount:** \$2,500

SPC Health Centers

For more information, contact Russel Adamski at 210-486-2222 (MLK Campus), or Robin Kitchen at 210-486-7161 (SWC Campus).

What to expect during the COVID-19 Pandemic

For updates on the Covid-19 vaccine, please visit the City of San Antonio COVID-19 vaccination information website. Source: <https://covid19.sanantonio.gov/What-YOU-Can-Do/Vaccination>.

Wellness 360 Healthcare
No Insurance? Virtual healthcare is available for Alamo Colleges students at 210-485-0571, M-F, 8am-5pm. Visit alamo.edu/wellnes360.

Preventive Steps

Preventive Steps

All residents of Texas above the age of 16 are eligible for the COVID-19 vaccine. People with COVID-19 have had a wide range of symptoms reported -ranging from mild symptoms to severe illness. Symptoms may appear 2-14 days after exposure to the virus. Source:

<https://www.cdc.gov/coronavirus/2019-ncov/vaccines/index.html>.

Return to Campus Plan

June 2021 we will be at Level III, 11 to 25% on site (effective 5/31/21 – 7/5/21)

🐾 🐾 🐾

Visit <https://www.alamo.edu/returntocampus> for more details and updates regarding the Return to Campus Plan

or call the Student Help Line at (210)212-5266

June Is Blood Donor Awareness!

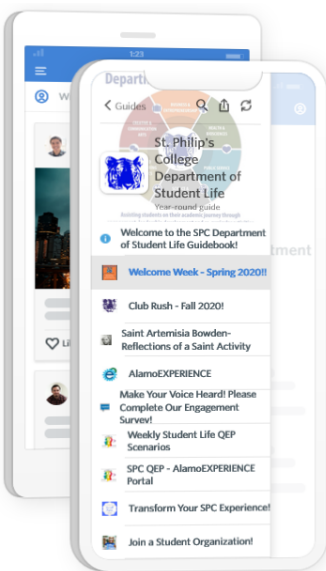
This month we will focus on blood donation. The theme is "Safe blood starts with me" and is observed on June 14. SPC, in association with the South Texas Blood & Tissue Center, has promoted, and will continue to sponsor, future blood drives. The Department of Student Life offers swag bags and the South Texas Blood & Tissue Center offers gift cards for your donations. Check with your campus College Health Center for updates. Please contact the MLK College Health Center at 210-486-2222, or the Southwest Campus College Health Center at 210-486-7161 for general questions about health.

Student Life

For more information contact Dr. Angela McPherson Williams at 210-486-2090

Student Life provides engaging activities that enhance the college experience at St. Philip's College. Visit [AlamoEXPERIENCE](#) to review all available activities and student organizations!

QEP: Quality Enhancement Plan
Complete the "What Do You Do?" Ethical Decision- Making scenario for the week by clicking the QEP logo below



Get the Guide on your mobile device

Download the Guide on mobile to access up-to-date information, track sessions, interact with attendees, view photos, and more!

GET THE GUIDEBOOK APP

Send a text with a link to the Guide or visit this page on your mobile device.



Standard text message rates apply

Student Life Events & Activities



Event: SPC Welcomes New Tigers for the Summer Sessions (Online)
Date/Time: June 7, 10, 14, 17, 21, 24, and 28
Monday (9:00 am – 12:00 pm), and Thursday (2:00 pm – 5:00 pm)
Summary: The Department of Student Life will assist with your questions about St. Philip's College. To join, click on the link <https://alamo.zoom.us/j/660619244> or use Meeting ID 660 619 244.

Event: Virtual Magic Show with Ran'd Shine (Online)
Date/Time: June 8 2:00 pm – 3:00 pm
Summary: Please join us for an engaging hour with our magician Ran'd Shine. To join, click on link <https://alamo.campuslabs.com/engage/event/7109499>

Event: Spirit Day//Zoomin' with the Department of Student Life: Tiger Nation United! (Online)
Date/Time: June 9, 16, 23, and 30 12:00 pm – 1:00 pm
Summary: Wear your favorite St. Philip's College shirt or wear school colors – royal blue and white. Like our page and post your picture on Instagram at <https://www.instagram.com/spcspiritandpridecrew/> To join, click on the link <https://alamo.zoom.us/j/211938372> or use Meeting ID 211 938 372.

Event: Virtual Juneteenth Reflection Activity (Online)
Date/Time: June 14-19 Ongoing
Summary: Juneteenth Freedom Day commemorates June 19, 1865 as the end of slavery in America when the news that the Emancipation Proclamation was signed by President Lincoln in 1863 finally reached the enslaved persons in Galveston, Texas. To join, click on link <https://alamo.campuslabs.com/engage/event/7108188>.

Event: Simply Rayne (Online)
Date/Time: June 14 3:30 pm – 4:30 pm
Summary: Please enjoy an hour of Rhythm & Blues with Simply Rayne. To join, click on link <https://alamo.campuslabs.com/engage/event/7108200>.

Event: Virtual Violinist Concert with Trenton Ray Thomas (Online)
Date/Time: June 15 2:00 pm – 3:00 pm
Summary: Please enjoy an hour of classical music with Trenton Ray Thomas. To join, click on link <https://alamo.campuslabs.com/engage/event/7110050>.

Event: Juneteenth Celebration Kick-off, Saul Paul, Musician with a Message (Online)
Date/Time: June 16 1:00 pm – 2:30 pm
Summary: Please enjoy this time with GRAMMY Award – nominated artist SaulPaul has garnered an international reputation as a musician with a message. Part rapper/part singer-songwriter, SaulPaul is an entertaining artist who blends his voice, his guitar, and his loop pedal to create a live show that is nothing less than an experience. <https://alamo.campuslabs.com/engage/event/7114315>.

Event: CultureFest Grill Raffle (Online)
Date/Time: May 31 – July 21 Ongoing
Summary: A large charcoal grill and Cowboy grill (made by the Institute 4 Welding Club and National Association of Home Builders) will be raffled off to raise funds for student scholarships. Tickets purchased through Alamo Marketplace. To join, click on the link <https://alamo.campuslabs.com/engage/event/7113026>

Event: CultureFest/Fiesta Reflection Activity (Online)
Date/Time: June 17-27 Ongoing
Summary: For 25 years the CultureFest & Rib Cook-off event has been a signature celebration for San Antonio's Eastside during the Fiesta season. As we reflect on Fiesta, tell us the following; what does Fiesta mean to you, what is your favorite Fiesta event, and why? What is your favorite Fiesta food? To join, click on the link <https://alamo.campuslabs.com/engage/event/7113198>

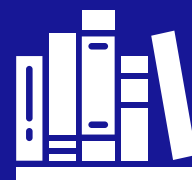
Laptop and Internet Hotspot Checkout Available to Students



Contact Technology Services 210-486-2777 or via email at spc-helpdesk@alamo.edu for more details.

To get help for Network or ACES Password issues contact Alamo Colleges District Support Central, 210-485-0555

Book Loan Program



Visit <https://bit.ly/3w8WS9v> to review your options with the Book Loan Program before purchasing your book!

Event: CultureFest Video (Online)
Date/Time: June 21-25 Ongoing
Summary: Strategic and Marketing Communications will share a CultureFest video on the SPC website.

Event: CultureFest Rib Cook-Off
Date/Time: June 24 1:00 pm –2:00 pm
Location: MLK Campus
Summary: Rib competitors will provide samples of beef and/or pork ribs to Celebrity and Student Judges.

Event: E-Sports Mario Kart Competition (Online)
Date/Time: June 29 6:00 pm – 8:00 pm
Summary: Welcome to the Mario Kart Competition. We would like to invite you to participate in this fun and exciting event. To join, click on the link <https://alamo.campuslabs.com/engage/event/7108334>.



Financial Literacy Program

St. Philip's College is dedicated to providing students with the financial education and training necessary to make informed financial decisions. Visit <http://bit.ly/SPCfls> for more details about the financial literacy resources available to you!

For more information, contact Enida Rehome at (210)486-2140

Tutoring Services

The Tutoring and Technology (TNT) Center provides online support services for students and faculty engaged in a variety of distance learning formats to ensure opportunities for student success. TNT offers FREE online professional tutoring through Brainfuse to St. Philip's College students in numerous areas for help with some of their toughest courses and subjects! [Visit https://bit.ly/SPCtutoring](https://bit.ly/SPCtutoring) for more details.

Veterans Affairs

For more information, contact Veronica Griego at 210-486-2540.

Veterans Affairs Certified Academic Advisors:

- (O-Z) Tony Gable lgable@alamo.edu, 210-486-2521
- (Gb-N) Alicia Stolte astolte2@alamo.edu, 210-486-2539
- (A-Ga) Vincent Garcia vgarcia365@alamo.edu, 210-486-2522

Reach us at 210-486-2111 or spc-vetaffairs@alamo.edu. See our list of services and helpful contacts at <https://www.alamo.edu/spc/admissions/specific-populations/military-dependents/veteran-affairs/>.



Career success after service with Heroes Linked



Heroes Linked is a nonprofit employment program, completely free and online. Heroes Linked connects those serving, Veterans, their spouses and Gold Star families with a national network of volunteer Advisors – many of whom are Veterans. They are professionals and experienced in their respective industries.

[LEARN MORE](#)

If you are experiencing any problems, feel free to reach out to any of these Student Support offices:

Educational Support Services Administrative Office	210-486-2468	Charlie Brammer
Disability Services	210-486-2199	Maria Botello
Career Experience	210-486-2468	Nathaniel Martinez
First Year Programs	210-486-2473	Liz Castillo
Tutoring and Technology Center	210-486-2517	Jared Boggs
Financial Literacy Services	210-486-2140	Enida Rehome
Student Advocacy Center	210-486-2827	Sasha Wilhelm
Counseling Services	210-486-2378	Eitandria Tello
Student Conduct/Title IX	210-486-2741	John Martin
Student Life	210-486-2090	Dr. Angie Mac