

# DATA POINT

An item of factual information derived from measurement or research

October 2009



### Planning, Research & Effectiveness Department

Applied Science & Technology Building, Office 200

Tel. 486-2369

Fax 486-2646

[www.alamo.edu/spc/iprdept](http://www.alamo.edu/spc/iprdept)

**Mecca Salahuddin**

**Director**

[msalahuddin1@alamo.edu](mailto:msalahuddin1@alamo.edu)

**Rhonda Johnson**

**Statistical Research Specialist**

[rjohnson@alamo.edu](mailto:rjohnson@alamo.edu)

**Elizabeth Ehrler**

**Research Specialist**

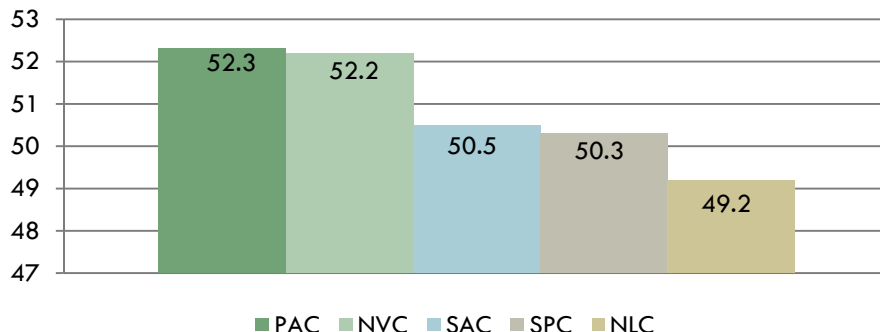
[eehrler@alamo.edu](mailto:eehrler@alamo.edu)



### BENCHMARK #4:

**Student –Faculty Interaction**

## Alamo Colleges Comparative Results for Academic Challenge



### Faculty Responses to Academic Challenge:

During the current school year, how much does the coursework in your selected course section at this college emphasized the following mental activities?

	Some	Quite a Bit
Analyzing the basic elements of an idea, experience or theory. (N=855)	12%	48%
Synthesizing and organizing ideas, information or experiences in new ways. (N=851)	17%	36%
Making judgments about the value or soundness of information, arguments or methods. (N=856)	26%	35%
Applying theories or concepts to practical problems or in new situations. (N=857)	15%	42%
Having students use information they have read or heard to perform a new skill. (N=862)	20%	38%

\*Includes all FT and PT Faculty

# DATA POINT

A Newsletter from the Planning, Research & Effectiveness Department

October 2009

## ACADEMIC CHALLENGE

In your experience at this college during the current school year, about how often have you done each of the following?

	Sometimes	Often
Worked harder than you thought you could meet an instructor's standards or expectations. (N=854)	36.3%	35.9%

During the current school year, how much has your coursework at this college emphasized the following mental activities?

	Some	Quite a Bit
Analyzing the basic elements of an idea, experience or theory. (N=855)	27.5%	42.1%
Synthesizing and organizing ideas, information or experiences in new ways. (N=851)	33.1%	39.2%
Making judgments about the value or soundness of information, arguments or methods. (N=856)	35.1%	35.8%
Applying theories or concepts to practical problems or in new situations. (N=857)	31.7%	36.0%
Using information you have read or heard to perform a new skill. (N=862)	25.3%	36.9%

During the current school year, about how much reading and writing have you done at this college?

	Between 1 and 4	Between 5 and 10	Between 11 and 20	More than 20
Number of assigned textbooks, manuals, books or book-length packs of course readings. (N=851)	47.3%	26.5%	14.0%	10.4%
Number of written papers or reports of any length. (N=853)	40.5%	30.2%	10.3%	5.8%

How much does this college emphasize each of the following?

	Some	Quite a Bit
Encouraging you to spend significant amounts of time studying. (N=855)	24.2%	39.7%

Mark the box that best represents the extent to which your examinations during the current school year have challenged you to do your best work at this college?

	(1) Extremely Easy	(2)	(3)	(4)	(5)	(6)	(7) Extremely Challenging
(N=824)	0.5%	1.9%	6.2%	25.7%	31.6%	22.9%	11.3%

Source: 2009 CCSSE Report