

# Student Success Newsletter

St. Philip's College, 1801 Martin Luther King Dr., San Antonio, TX 78203  
St. Philip's College - Southwest Campus, 800 Quintana Rd., San Antonio, TX 78211

## Student Success Leadership Team



Dr. Mordecai Brownlee  
Vice President of Student Success



Dr. Paul Machen, II  
Dean of Student Success



Christina Cortez  
Dean of Student Success

**Editors:** Rosalinda Rivas, Eitandria Gatlin

## Quality Enhancement Plan – Ethical Decision-Making

St. Philip's College is accredited by the Southern Association of Colleges and Schools Commission on Colleges (SACSCOC). Part of this process is the QEP (Quality Enhancement Plan) to promote student success. Our QEP topic is Ethical Decision-Making.

QEP Focus: Ethical decision-making is the ability to connect values and choices to actions and consequences.

QEP Goal: Students engage in specific measurable academic activities to enhance their ethical decision-making skills.

### Ethical Decision Making Process:

- \*Stop and think to determine the facts.
- \*Identify the options.
- \*Consider consequences for yourself and others.
- \*Make an ethical choice and take appropriate action.



## MESSAGE FROM OUR VICE-PRESIDENT:

Greetings SPC Tigers –

Happy March everyone! This month Student Success is leading an initiative called, "Commit to Complete Week" here at St. Philip's College. The goal of this week is to encourage ALL students to (a) define their path toward program completion, and (b) increase student knowledge of all the resources available to ensure success. For more information, please stop by Sutton Learning Center (SLC) 102 and ask for Liz Castillo!

**Dr. Mordecai Ian Brownlee**  
**Vice President of Student Success**  
**St. Philip's College**

## Important Dates

March 1	Last Day to Withdraw Flex I (First 8-week classes)
March 11-17	Spring Break – Be Safe!
March 20-23	Flex I Final Exams – See catalog for schedule
March 23	End of Flex I
March 25	Classes Begin Flex II (Second 8-week classes)

## Student Success in the SLC – MLK Campus

For more information, contact Charleen Brammer at 210-486-2468 or 210-486-2275.

### SLC 102 Point of Contact

SPC Safe <b>SPACE</b> Student Success & Advocacy Center	Elizabeth Castillo
Counseling Services	Rosalinda Rivas
Disability Services	Maria Botello
Service Learning/Financial Literacy	Elizabeth Castillo
Student Conduct/Title IX Programs	John Martin
Violence Prevention Grant	James Cooper

### SLC 127 Point of Contact

SPC Health Center	Janet Feathers
-------------------	----------------

## Spring 2019 Hours of Operation

Monday, Tuesday, Thursday, Friday	8:00 am – 5:00 pm
Wednesday	8:00 am – 7:00 pm
First Saturday of the Month	9:00 am – 1:00 pm





# St. Philip's College AlamoCARES

For more information, contact Dr. Mordecai Brownlee, Vice President of Student Success at 210-486-2252.

St. Philip's College is committed to providing a supportive learning environment and to fostering safe, healthy relationships among our students. In this effort, Alamo Colleges District initiated AlamoCARES, a prevention, education and support program regarding dating violence, domestic violence, sexual assault and stalking. It is our sincere hope that AlamoCARES will empower you to make well-informed decisions about life issues that affect your college years and beyond.

Within the AlamoCARES site, you will find information on rights granted by **Title IX** and resources to help educate and assist you when dealing with harassment and sexual violence. Coming soon are events, training and opportunities to bring awareness when dealing with difficult issues and creating discussion opportunities with students. Visit us at <http://alamo.edu/spc/alamocares/> for more information.

The Alamo Colleges District encourage individuals to bring forward information/complaints about sexual harassment and sexual violence. **Retaliation** against any **individual who reports or participates** in the investigation of alleged violations is **strictly forbidden** and will be **enforced** by the College administration.

If you believe you have experienced **Sexual Misconduct** you may consider the following options:

- Contact **Campus Police** at 210-485-0099 (non-emergency) or 210-485-0911 (emergency)
- Seek **medical attention** at a hospital or with a physician
- **Report the incident** at [www.alamo.edu/TitleIXCoordinator/](http://www.alamo.edu/TitleIXCoordinator/) (call John Martin 210-486-2746)
- **Contact SPC Counseling Services** at 210-486-2333 (for confidential counseling and or referrals)
- Contact **parents, relatives or close friends** for support

**H.1.1 Equal Education and Employment Opportunities (Policy)** [www.alamo.edu/district/policies/](http://www.alamo.edu/district/policies/)  
AlamoCARES has additional **Title IX** information and resources at: [www.alamo.edu/spc/AlamoCARES](http://www.alamo.edu/spc/AlamoCARES)

## **ATTENTION STUDENTS!**

All entering freshmen, former and transfer students are now required to complete “**Sexual Assault Prevention for Community Colleges**”. Sexual Assault Prevention for Community Colleges is an online survey and course addressing critical life skills. The training is our way of informing St. Philip's College students about **Title IX** standards, reporting violations and resources available. **All entering freshmen, former and transfer students are required to complete the training before the end of their first semester of classes at St. Philip's College (to avoid a registration hold being placed on their account).**

To access the Sexual Assault Prevention for Community Colleges training:

1. Always sign in through ACES at <https://alamoaces.alamo.edu>.
2. Look for the AlamoCARES box on the Student tab and read the important message before accessing the course. Note: an alternative training is available; see your Vice President for Student Success for assistance.
3. Click on the link provided, and complete the confidential pre-survey at the start of the course. The Alamo Colleges District does not receive a copy of your responses.
4. The quiz at the end of the course is required to document your completion, but the score is not recorded and will not impact you in any way. Completion is documented on your student record.

**You Have the Right to Feel Safe.**

# Academic and Career Advising Services (MLK Campus)

For more information contact Arianna Lay at 210-486-2381.

**Event:** New Student Orientation  
**Date/Time:** Tuesdays 9:00 am – 12:00 pm  
 Wednesdays 3:00 pm – 6:00 pm  
**Location:** Center for Learning Resources (CLR), Room 108  
**Summary:** Check your student email as you will be receiving periodic email from your assigned Certified Academic Advisor with important information. You can register for New Student Orientation at

**Event:** Strategic Job Search Workshop  
**Date/Time:** March 5 12:30 pm – 1:30 pm  
**Location:** Center for Learning Resources (CLR), Room 108  
**Summary:** Gilbert Palomo will introduce students to the six steps of a strategic job search.

**Event:** STAR Interview Workshop  
**Date/Time:** March 19 12:30 pm – 1:30 pm  
**Location:** Center for Learning Resources (CLR), Room 108  
**Summary:** Designed to prepare students for behavioral-based interview questions. See Gilbert Palomo.

**Event:** Vocational Nursing Workshop  
**Date/Time:** March 21 10:00 am – 2:00 pm  
**Location:** Center for Health Professions (CHP), Atrium  
**Summary:** Design as a career exploration and networking opportunity for students in the LVN program. For more information contact Gilbert Palomo (210-486-2056).

**Event:** Tiger Advising Day  
**Date/Time:** March 27 10:00 am – 6:00 pm  
**Location:** Turbon Student Center (TSC), Lobby  
**Summary:** Students will meet their assigned Advisors and learn how to schedule an AlamoNAVIGATE advising appointment. Meet staff from Financial Literacy, Tutoring & Technology Center, Counseling Services, Financial Aid, Veteran’s Affairs, and Distance Learning. Enjoy refreshments, fun with a green screen and an opportunity to enter a drawing for scholarships and bookstore gift cards.

ALAMO COLLEGES AlamoINSTITUTES	
An organization of six career pathways designed for students who have key interests, such as, but not limited to the following areas:	
Creative & Communication Arts Institute	The Arts, Audio/Video Technology and Communications*
Business & Entrepreneurship Institute	Business Management & Administration, Finance, Hospitality & Tourism, and Marketing*
Health & Biosciences Institute	Health Sciences*
Advanced Manufacturing & Logistics Institute	Architecture, Construction, Manufacturing, Transportation, Distribution & Logistics*
Public Service Institute	Education, Training, Government, Public Administration, Human Services, Law, Public Safety, Correction and Security*
Science & Technology Institute	Agriculture, Food & Natural Resources, Information Technology, Science, Technology, Engineering and Mathematics*

**Be Wise, Get Advised:** Contact your Certified Advisor today. Below are the steps to identify who your advisor is:

1. Log into ACES
2. Click on the My Page tab (4th tab from the left)
3. Under Academic Profile (on the left) select the current term and press Go
4. Your advisor's name will appear under the "Advisors" title
5. Visit your advisor

<https://www.alamo.edu/spc/academics/academic-resources/academic-advising/>

# Academic and Career Advising Services (continued)

For more information contact Arianna Lay at 210-486-2381.

**Banner ID and Photo ID Required!**

**Hours of Operation for Appointment Based Academic Advising:**

Monday - Thursday: 8:00 am – 5:00 pm

**Hours of Operation for Walk-In Academic Advising:**

Wednesday: 5:00 pm – 7:00 pm

Friday: 1:00 pm – 5:00 pm

First Saturday of the month: 9:00 am – 1:00 pm

## **Institute 1: Creative & Communication Arts**

Larry Medina [lmedina46@alamo.edu](mailto:lmedina46@alamo.edu)

Victor Natera [vnatera@alamo.edu](mailto:vnatera@alamo.edu)

## **Institute 2: Business & Entrepreneurship**

Yolanda Ward [yward@alamo.edu](mailto:yward@alamo.edu)

James Satchell [jsatchell@alamo.edu](mailto:jsatchell@alamo.edu)

Joseph Hernandez [jhernandez31@alamo.edu](mailto:jhernandez31@alamo.edu)

## **Institute 3: Health & Biosciences**

Janet Hart [jhart26@alamo.edu](mailto:jhart26@alamo.edu)

Frances Calderon [fcalderson4@alamo.edu](mailto:fcalderson4@alamo.edu)

Irma Lopez [isanchez17@alamo.edu](mailto:isanchez17@alamo.edu)

Teresa Hopwood [thopwood2@alamo.edu](mailto:thopwood2@alamo.edu)

Tricia McElligott [tmcelligott@alamo.edu](mailto:tmcelligott@alamo.edu)

Nathaniel Martinez [nmartinez324@alamo.edu](mailto:nmartinez324@alamo.edu)

Doug Gable [dgable@alamo.edu](mailto:dgable@alamo.edu)

Carly Cobb [ccobb27@alamo.edu](mailto:ccobb27@alamo.edu)

## **Institute 4: Advanced Manufacturing & Logistics Automotive Technology (MLK Campus)**

Yvonne Benton [ybenton@alamo.edu](mailto:ybenton@alamo.edu)

Christine Saucedo [csauceda1@alamo.edu](mailto:csauceda1@alamo.edu)

Konnie Harper-Thompson [kharpert-thompson@alamo.edu](mailto:kharpert-thompson@alamo.edu)

## **Institute 4: Advanced Manufacturing & Logistics (Southwest Campus)**

Sarah Ramirez [sramirez260@alamo.edu](mailto:sramirez260@alamo.edu)

Carlos Solis [csolis@alamo.edu](mailto:csolis@alamo.edu)

Jennifer Salmeron [jleal@alamo.edu](mailto:jleal@alamo.edu)

Marisa Zertuche [mzertuche34@alamo.edu](mailto:mzertuche34@alamo.edu)

## **Institute 5: Public Service**

Yvonne Benton [ybenton@alamo.edu](mailto:ybenton@alamo.edu)

Christine Saucedo [csauceda1@alamo.edu](mailto:csauceda1@alamo.edu)

Konnie Harper-Thompson [kharpert-thompson@alamo.edu](mailto:kharpert-thompson@alamo.edu)

## **Institute 6: Science & Technology**

Meredith Bess [mbess@alamo.edu](mailto:mbess@alamo.edu)

Deborah Woods [dwoods54@alamo.edu](mailto:dwoods54@alamo.edu)

Monica Guerrero [mguerrero151@alamo.edu](mailto:mguerrero151@alamo.edu)

## **Alumni Affairs (MLK Campus)**

For more information contact Dr. Sharon Crockett-Ray at 210-486-2887.

The Alumni and Friends Association is committed to bringing together alumni and friends from all walks of life. We are a rapidly expanding organization and are proud to carry forward the St. Philip's College legacy. If you are looking for a great way to stay in touch with SPC and the community, there is no better way than with a membership into the Alumni and Friends Association. Membership information is at <https://www.alamo.edu/spc/alumni-affairs/> or click [here](#).

## **Child Development Center (MLK Campus)**

For more information contact Monica Guzman at 210-486-2501.

The Child Development Center (CDC), located at 2207 Wyoming Dr., provides excellent learning opportunities for every child. Payment assistance and subsidized rates are available for SPC students who qualify. For more information call us or visit <https://www.alamo.edu/spc/child-dev-center/>.



## Bae-B-Safe (MLK Campus)

For more information contact Tracy Watts at 210-486-2538.



BAE-B-SAFE works to support educational success and increase graduation rates by preventing unplanned pregnancies and preparing young people with life skills to protect their future. Empower and educate yourself about healthy sexual behaviors. Participate in one of our programs to earn gift cards! Visit us in the Center for Health Professionals (CHP) Building, Room 202A. (Must be 14-19 years of age to participate.)

## Business Office (MLK Campus)

For more information contact Sofia Zavala at 210-486-2247.

### Spring Hours:

Monday, Tuesday, Thursday, Friday	8:00 am – 5:00 pm
Wednesday	8:00 am – 7:00 pm
First Saturday of the month	9:00 am – 1:00 pm



The Business Office staff can answer questions about billing, or tuition discounts and waivers. Students may also send email to [dst-vbo2@alamo.edu](mailto:dst-vbo2@alamo.edu).

## Counseling Services (MLK Campus)

For more information contact Rosalinda Rivas at 210-486-2333.

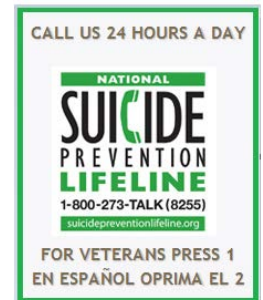
**DACA Allies** - Find more resources (such as access to scholarships and legal assistance) for Deferred Action for Childhood Arrivals (DACA) at <https://www.alamo.edu/spc/admissions/specific-populations/daca/> or speak confidentially to District Coordinator Carmen de Luna Jones (210-485-2080), SPC Director Elizabeth Castillo (210-486-2473), or SPC Counselor Rosalinda Rivas (210-486-2117).

### Event: Personal Counseling – A Safe Space

**Date/Time:** Monday - Friday 8:00 am – 5:00 pm  
 First Saturday of the month 9:00 am – 1:00 pm

**Location:** Sutton Learning Center (SLC), Suite 102

**Summary:** Students talk to Counselors about many different types of issues like career concerns, anxiety, academic stress, relationships, stress associated with deportation/family legal status, trauma, coping with illness, procrastination, and more. Counselors also provide referrals and community resources. Make an appointment with a Counselor at 210-486-2333 if you want to talk about strategies that can help you manage your stress, school and life activities. See important links on our website <https://www.alamo.edu/spc/experience-spc/current-students/support-centers/counseling-services/>.



Someone who is homeless or who resides in a household where the housing and utility costs are greater than 50% of the household income could be described as housing insecure. **Are you experiencing housing insecurity? If so, you are not alone.**

Contact [Counseling Services](#) so we can share local resources with you.  
 Come by or call for an appointment.  
 (210) 486-2333  
 MLK: Sutton Learning Ctr., Room 102  
 SWC: LIFEspace Ctr., Bldg. 1, Room A-135

### Substance Abuse and Mental Health Services Administration (SAMHSA)

1-800-662-HELP (4357)  
TTY: 1-800-487-4889

Treatment referral and information 24/7

[www.samhsa.gov/find-help/national-helpline](http://www.samhsa.gov/find-help/national-helpline)

## Disability Services (MLK Campus)

For more information contact Maria Botello at 210-486-2199.



**Event:** **Schedule your appointment.** To be eligible for disability-related services, students must have a disability as defined by the **Americans with Disabilities Act of 1990 (ADA)** and **Section 504 of the Rehabilitation Act of 1973.**

**Date/Time:** Monday, Tuesday, Thursday, Friday 8:00 am – 5:00 pm  
Wednesday 8:00 am – 7:00 pm  
First Saturday of the month 9:00 am – 1:00 pm

**Location:** Sutton Learning Center (SLC), Suite 102

**Summary:** Disability Services ensures reasonable academic support to qualifying students with disabilities. We follow national best practices to ensure that our students have access to the latest information and technologies. Disability Services is a hub of activities, support, referrals and encouragement for our students with disabilities. For more information and access to the online registration system, visit <https://www.alamo.edu/spc/experience-spc/current-students/support-centers/disability-services/>.

## Good Samaritan Veteran's Outreach & Transition Center (MLK Campus)

For more information contact William Moseley at 210-486-2506.

The GSVOTC, located at 202 Connelly St. (near the St. Philip's College campus), provides free personalized services to active duty service members, veterans, their families and the community. This includes referral services, job training, financial counseling, health and wellness, business start-up, and academic advisement. We now provide no cost legal services by a licensed attorney. See us Monday - Friday 8:00 am - 5:00 pm.

The Selective Service System (United States Government) is reminding all men between the ages of 18 and 25 (regardless of citizenship) to register within 30 days of their 18th birthday. This is the law. Late registrations are accepted until a man reaches his 26th birthday. A person's status, whether documented or undocumented, is not shared -- this policy remains in force. Registration forms (SSS Form 1) are available at any U.S. post office and a fillable PDF form is available at <https://www.sss.gov>.

## International Student Services (MLK Campus)

For more information contact Meredith Bess at 210-486-2147.

**Event:** **Resources for F-1 and M-1 visa holders**

**Date/Time:** Monday, Tuesday, Thursday, Friday 8:00 am – 5:00 pm  
Wednesday 8:00 am – 7:00 pm  
First Saturday of the month 9:00 am – 1:00 pm

**Location:** Welcome Enrollment Center (WEC)

**Summary:** International Student Services provides many resources for F-1 and M-1 visa holders. We offer individual advising and services in the following areas:

- Immigration matters, such as obtaining F-1 student visas, maintaining full-time enrollment, transferring administration of your SEVIS I-20 record between schools, and traveling outside of the United States
- Employment restrictions and options and obtaining work authorization
- Information about medical insurance coverage
- Adjustment to St. Philip's College and to life in San Antonio and the United States

**CALL FOR  
24-HR HELP**

National Human  
Trafficking Hotline:  
**1 (888) 373-7888**

San Antonio  
Rape Crisis Center:  
**(210) 349-7273**

Centro Seguro  
Drop In Center:  
**(210) 340-8090**

San Antonio Police  
(Non-Emergency):  
**(210) 207-7273**

## International Student Services (continued)

For more information contact Meredith Bess at 210-486-2147.

- Provide letters for verification of your F-1 status for various purposes, such as obtaining a Texas driver's license or identification card
- Academic advising available to assist ELL and international students with course and program planning
- For more information visit <https://www.alamo.edu/spc/admissions/specific-populations/international-student-services/>

## Library Resources and Services (MLK Campus)

For more information contact April Schramm (210-486-2357) or Andrew Rivera (210-486-2564).

**Event:** **Spring Hours:**

**Date/Time:** Monday – Thursday 7:00 am – 8:00 pm  
Friday 7:00 am – 5:00 pm  
Saturday 9:00 am – 3:00 pm

**Location:** Center for Learning Resources (CLR)

**Summary:** Individual Research Assistance Appointments are available at both campuses, to request an appointment go to <https://www.alamo.edu/spc/experience-spc/current-students/student-resources/library/ira-form/>. In-Library Use Laptops are now available!!! Please see the Circulation Desk on the first floor of the library for more information!



## MEN OF ST. PHILIP'S COLLEGE

### MEN OF SPC SOCIAL EVENT

All male students are invited to come socialize with employees from across the organization and discuss actions they can take to be successful in college and beyond. Come learn about the College and Community Agency Success Tips of the Month and complete an Academic Wellness Check with a Certified Advisor. Additionally, students can connect with employees who have a common interest or hobby and find out how they become involved with these activities while at the college. All students will be entered into a drawing for lots of prizes. A light lunch will be served. No need to sign up, just show up and learn from experts across the college.

### EVENT INFORMATION:

**TIME:** 12:00 P.M.–1:30 P.M.

### DATES:

SW Campus - Wednesday, March 20, 2019

### LOCATION:

SW Campus - Building 1, Tiger Bistro

### FOR MORE INFO, CONTACT:

Dr. Paul Machen  
(210) 486-2157

Mr. Paul Lede  
(210) 486-2581



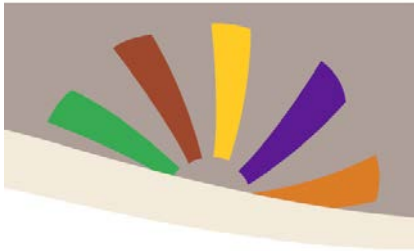
# Military Support Services (Off-Campus Military Sites)

For more information contact Betsy Hamilton at 210-486-2610.

The Military Support Services (MSS) Team is honored to serve our Active Duty Military, National Guard, Reserve students and their dependents at SPC and at Joint Base San Antonio. Email the Team at [dst-military@alamo.edu](mailto:dst-military@alamo.edu).

## Available Services includes, but is not limited to:

- Academic and career exploration and information
  - Admission and enrollment services
  - Placement and Texas Success Initiative (TSI) questions
  - Residency classification issues
  - ACES (Student Portal) navigation assistance
  - Basic financial aid assistance
  - Tuition Assistance (TA) and MyCAA\* funding help and information
  - Preliminary advisement, Military and MyCAA\* education & training plans
  - Graduation applications
  - Referrals
- \*[Military Spouse Career Advancement Account](#)



## Military, Veteran & Dependent Students (No Cost) Employment Workshop Series

If you're military, veteran or a dependent family member attending St. Philip's College and you want help learning how to craft the perfect resume, gain insight on what employment recruiters look for and gain experience on handling the job interview process, this series is for you! Space is limited. Email Georgia Flores at [gflores294@alamo.edu](mailto:gflores294@alamo.edu) or call (210) 486-2423 to sign up.

### Session 2: Resume Building Part 2 (Lunch provided)

3/4/19      1130-1330      SWC - Industrial Technology Center (ITC), Library, Room 123L  
3/6/19      1130-1300      MLK - Sutton Learning Center (SLC), 212B

## Schedules Supporting our Military & Veteran Families

PRIORITY ENROLLMENT for our military and veteran-connected students:

- RESERVED Joint Base San Antonio Courses ([Lackland](#), [Randolph](#) and [Fort Sam Houston](#))
- RESERVED [Online Courses](#)
- RESERVED Science Courses –see schedule in ACES

For more information, view our webpages:

### JBSA- Ft. Sam Houston [www.alamo.edu/fortsam](http://www.alamo.edu/fortsam)

2408 N. New Braunfels  
Bldg. 2248, Room 207  
Office (210) 486-2004

Classroom Location  
Trailer #4011A  
2427 Hood St.

### JBSA -Lackland [www.alamo.edu/lackland](http://www.alamo.edu/lackland)

1550 Wurtsmith St.  
Bldg. 5725, Room 144  
Office (210) 486-7224

Classroom Location  
Bldg. 5725  
1550 Wurtsmith St.

### JBSA- Randolph [www.alamo.edu/randolph](http://www.alamo.edu/randolph)

301 B Street West,  
Bldg. 208, Room 10  
Office (210) 486-2901

Classroom Location  
Bldg. 208  
301 B Street West



# Phi Theta Kappa Honor Society (MLK Campus)

For more information contact Maria Botello at 210-486-2199.



Students who have a cumulative (overall) GPA of 3.5 or higher and have completed at least 12 college hours are qualified! Graduate with honors by accepting membership! For more information about this award winning honor society, contact a Chapter advisor at <https://www.alamo.edu/spc/experience-spc/campus-life/get-involved/honor-society/> and visit the organization's website <http://www.ptk.org/join.aspx>.

## Records and Registration (MLK Campus)

For more information contact Tracy Shelton at 210-486-2292.

Contact staff in Records and Registration or Admissions, to get answers about FERPA, cumulative hours, grades, GPA, etc. You can find resources to help continue your journey here at SPC. The staff is dedicated to your success as a student. Let us know how we can help by calling 210-486-2700, or visiting <https://www.alamo.edu/spc/experience-spc/current-students/records-and-transcripts/>.

The last day for Incomplete "I" Grades to be completed are as follows:

<u>Due Date</u>	<u>For all parts of the term</u>
April 15, 2019	Fall 2018

## QEP Showcase

For more information contact Sonia Valdez at 210-486-2348.

**Event:** QEP Showcase  
**Date/Time:** March 29 9:30 am – 2:00 pm  
**Location:** Heritage Room  
**Summary:** For more information call or email Sonia Valdez at svaldez@alamo.edu.



## 11th Annual Scholarship Golf Tournament

The Annual Scholarship Golf Tournament raises scholarship funds to help support the needs of our students at St. Philip's College. Funds raised during the golf tournament contribute to the St. Philip's College Scholarship Fund.

**When:** Friday, March 1    **Tee Time:** 8:00 a.m.    **Where:** [The Republic Golf Course](#); San Antonio, TX

**For more information:**

<https://www.alamo.edu/spc/about-spc/offices-departments/advancement-grants/golf-tournament/>



## Student Conduct/Title IX (MLK Campus)

For more information contact John Martin at 210-486-2746.

All entering freshmen, former and transfer students are now required to complete "Sexual Assault Prevention for Community Colleges". Registration holds have been placed on student accounts who still need this training. The exam at the end of the training is required to document your completion.

To complete the training:

1. Login to ACES at <https://alamoaces.alamo.edu>
2. Select the Student Tab
3. Click the link located in the AlamoCARES box to begin the training



## Student Financial Services (MLK Campus)

For more information contact Grace Zapata 210-486-2269.

**Federal Work Study positions:** Stop by to learn more about positions and the application process. There may be an opening for you! For more Financial Aid news (priority dates, deadlines, resources and more), call our staff at 210-21ALAMO (210-212-5266), or visit: <https://www.alamo.edu/spc/admissions/pay-for-college/financial-aid/>.

**2019 College Connection  
Financial Aid Saturdays  
(9:00 am – 1:00 pm)**

**Attend a Session! Complete the  
FAFSA/TAFSA!**

**March 2    April 6    May 4**

 **ALAMO  
COLLEGES  
DISTRICT**

DREAMers  
Need Assistance Applying for State Aid?  
Texas Application for State Financial Aid  
(TASFA)



Call the Community Education & Training Centers near  
you to schedule an appointment at:

<b>Brackenridge (Eastside) Center</b> 532 N. Center San Antonio, TX 78202 (210) 485-0280	<b>Harlandale (Southside) Center</b> 901 March Avenue San Antonio, TX 78214 (210) 989-5999
---	---

[www.alamo.edu/district/etc](http://www.alamo.edu/district/etc)  
[www.alamo.edu/district/daca](http://www.alamo.edu/district/daca)

The Alamo Colleges District does not discriminate on the basis of race, color, religion, gender, national origin, age, disability, veteran status, genetic information or sexual orientation with respect to access, employment programs, or services. Inquiries or complaints concerning these matters should be brought to the attention of Associate Vice-Chancellor of Human Resources and Organizational Development, Title IX Coordinator, 2100 West Loop West, Suite 1000, San Antonio, Texas 78204.

## Strategies of Behavioral Intervention (MLK Campus)

For more information contact Maria Botello at 210-486-2199.

The **Strategies of Behavioral Intervention (SOBI)** mission is to promote student, faculty and staff success and campus safety. The SOBI protocol guides our college community to recognize, prevent and respond to incidents.

## Student Life (MLK Campus)

For more information contact Dr. Angela McPherson Williams at 210-486-2090.

OrgSync is now **AlamoSync!** Please check it out by logging into ACES, click the student tab, and scroll down until you see the **AlamoSync** logo. Let the Department of Student Life know if you need assistance.



# Student Life (MLK Campus)

For more information contact Dr. Angela McPherson Williams at 210-486-2090.

**Event: Golf Tournament**

**Date/Time:** March 1 11:00 am – 1:00 pm

**Location:** Republic Golf Course

**Summary:** The Annual Scholarship Golf Tournament raises scholarship funds to help support our students at St. Philip's College. Come show your support at Republic Golf Course!

**Event: Celebrate our 121<sup>st</sup> Anniversary and Phil the Mascot's Birthday**

**Date/Time:** March 4 11:00 am – 1:00 pm

**Location:** Turbon Student Center (TSC), 1<sup>st</sup> Floor

**Summary:** Take a picture with Phil the Tiger, our Mascot. He looks good to be 121 yrs. old!



**Event: Spirit Day with Birthday Cake**

**Date/Time:** March 6 11:00 am – 1:00 pm

**Location:** Turbon Student Center (TSC), 1<sup>st</sup> Floor

**Summary:** Wear blue and white to show your school spirit and enjoy some birthday cake!

**Event: Tiger Basketball Game vs. San Antonio College**

**Date/Time:** March 6 6:00 pm – 10:00 pm

**Location:** San Antonio College, Chandler Physical Education Center (CPEC)

**Summary:** Come cheer and support the basketball team! Students, faculty, staff and SPC sports fans are invited to attend, enjoy entertainment, refreshments from the concessions stand and much more.

**Event: Tiger Volleyball Game vs. San Antonio College**

**Date/Time:** March 7 7:00 pm – 8:30 pm

**Location:** San Antonio College, Chandler Physical Education Center (CPEC)

**Summary:** Come cheer and support the volleyball team! Students, faculty, staff and SPC sports fans are invited to attend, enjoy entertainment, refreshments from the concessions stand and much more.

**Event: SGA Spring VPSS Town Hall/General Assembly**

**Date/Time:** March 21 12:00 pm – 1:00 pm

**Location:** Turbon Student Center (TSC), Everett Viewing Room 216

**Summary:** Meet Dr. Brownlee, Vice President of Student Success, and meet the 2018-2019 Student Government Association officers RSVP in AlamoSYNC.

**Event: Tiger Basketball Game vs. Victoria College**

**Date/Time:** March 20 6:00 pm – 10:00 pm

**Location:** Health & Fitness Center (HFC), Gymnasium

**Summary:** Come cheer and support the basketball team! Students, faculty, staff and SPC sports fans are invited to attend, enjoy entertainment, refreshments from the concessions stand and much more.

**Event: Spirit Days**

**Date/Time:** March 20 and 27 11:00 am – 1:00 pm

**Location:** Heritage Pavilion (Turbon Student Center for inclement weather)

**Summary:** Wear your favorite St. Philip's shirt or wear school colors (royal blue and white)!

**Event: Tiger Volleyball Game vs. Victoria College**

**Date/Time:** March 21 7:00 pm – 8:30 pm

**Location:** Health & Fitness Center (HFC), Gymnasium

**Summary:** Come cheer and support the volleyball team! Students, faculty, staff and SPC sports fans are invited to attend, enjoy entertainment, refreshments from the concessions stand and much more.

# Student Life (continued)

For more information contact Dr. Angela McPherson Williams at 210-486-2090.

**Event: Lunch and Lead Session**

**Date/Time:** March 22 9:30 am – 10:30 am

**Location:** Turbon Student Center (TSC), Rooms 203/204

**Summary:** Come join us for an engaging hour of leadership, event planning support, and essential updates from the Department of Student Life. RSVP in AlamoSYNC – brunch will be provided.

**Event: Spring Flex II Welcome Tent**

**Date/Time:** March 25 and 26 7:00 am – 6:00 pm

**Location:** CLR Breezeway

**Summary:** The Department of Student Life will assist in printing schedules, giving directions and maps, and provide snacks under the blue tent.

**Event: Student Organization & Athletic Awards Luncheon**

**Date/Time:** March 28 11:45 am – 1:00 pm

**Location:** Turbon Student Center (TSC), Everett Viewing Room #216

**Summary:** The Department of Student will recognize student organization members and athletes for their service, leadership and commitment during the 2018 – 2019 academic year.

**Event: Cesar Chavez March for Justice**

**Date/Time:** March 30 8:00 am – 1:00 pm

**Location:** Meet in the Turbon Student Center (TSC), Lobby  
(We will provide transportation to the site, and t-shirts for a limited number of students. The March starts on the west side of town at 1314 Guadalupe St., 78207).

**Summary:** Celebrate the life of Cesar Chavez, a great man who significantly impacted the lives of others. He was a union leader and labor organizer who believed in nonviolence and better treatment of farm workers. He led the United Farm Workers union for 31 years.

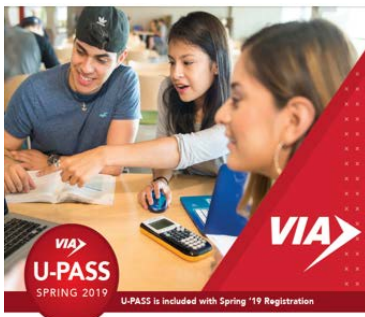


*"The fight is never about grapes or lettuce. It is always about people."*

## St. Philip's College's



Do you want to give feedback to SPC? Did you have a great experience with a service offered at the college or do you want something addressed? You can now do that with our "Feed the Tiger" form. Share your thoughts with us. We want to hear from you and address your concerns. *Click on the orange button at <http://spcweb.alamo.edu/feedback/index.html>.*



Your student ID is your VIA U-Pass

Alamo Colleges District has partnered with VIA to offer the new U-Pass to all students, faculty and staff. For the Spring 2019 semester, your Alamo Colleges Student ID is your U-Pass to ride on all VIA mainline bus routes. Just show your Student ID to the bus operator when boarding.

Unlimited bus ridership. For more information visit

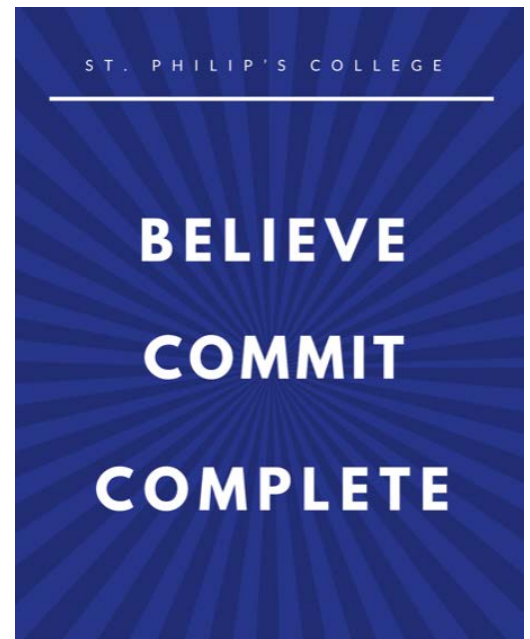
<https://www.alamo.edu/news-events/news/2019/01-january/via-buss-pass/>



## **SPC is Growing!**

**Be patient as you find your new favorite parking lot.  
There are enough spaces for everyone.**

Parking Lots 13 and 15 (Walters Rd.) are closed, and Lots 20 and 21 (Wyoming and Mittman Sts.) are partially closed due to construction. For the latest parking updates go to: <https://www.alamo.edu/spc/cip>



## **Tutoring Services and Service Learning (MLK Campus)**

For more information contact Elizabeth Castillo at 210-486-2473.

### **DACA Allies**

Speak confidentially to District Coordinator Carmen de Luna Jones (210-485-2080), SPC Dir. Liz Castillo (210-486-2473), or SPC Counselor Rosalinda Rivas (210-486-2117). Find additional resources for Deferred Action for Childhood Arrivals (DACA) at <https://www.alamo.edu/spc/admissions/specific-populations/daca/>.



### **SPC Safe SPACE Student Success & Advocacy Center**

**Event:** Helping Students Succeed at SPC  
**Location:** Sutton Learning Center (SLC), Suite 102  
**Summary:** The SPC Safe SPACE Student Success & Advocacy Center provides free services for students such as a quick Grab 'N Go snack, and possible access to a one-time emergency aid program through Trellis. Learn more by contacting Liz Castillo (210-486-2473), or Enida Rehome (210-486-2140).

**Event:** Passport to Completion  
**Date:** March 25 – March 29  
**Location:** Sutton Learning Center (SLC), Suite 102  
**Summary:** Learn about different departments on campus designed to help in your academic and personal growth. Passport to Completion is a fun way to connect students with tutors, counselors, advisors, advocates and friends. By completing any two activities on the Passport to Completion, students win a free Commit to Complete T-Shirt. Students, pick up your Passport to Completion in SLC 102 beginning March 25<sup>th</sup>.



## Tutoring Services and Service Learning (continued)

For more information contact Elizabeth Castillo at 210-486-2473.

**Event:** Food Drive at MLK  
**Date:** March 1 – March 29  
**Location:** Sutton Learning Center (SLC), Suite 102  
**Summary:** Support our Food Drive by donating non-perishable items at any **Safe SPACE** food drive receptacles located throughout the campus. If you have questions, contact Liz Castillo at 210-486-2473.

### Financial Literacy

**Event:** Free Online Financial Coaching  
**Date/Time:** By appointment  
**Location:** <https://www.aie.org/coaching/>  
**Summary:** This free service in partnership with Trellis is designed to help you make smart financial decisions. For more information contact Enida Rehome at 210-486-2140.

### Tutoring Services and Perpetual Book Loan Program

**Event:** General tutoring, a great place to study, and free Book Loan Program!  
**Date/Time:** Monday – Thursday 8:00 am – 7:00 pm  
Friday 8:00 am – 5:00 pm  
Saturday 10:00 am – 3:00 pm  
**Location:** Center for Learning Resources (CLR), 3<sup>rd</sup> floor Lobby (Circulation Desk)  
**Summary:** Tutoring in speech, history, business, accounting (I and II) and Spanish. Call 210-486-2527 or visit <https://www.alamo.edu/spc/academics/academic-resources/tutoring-centers/tutoring-and-technology-center/>. The Perpetual Book Loan Program is offered year-round and is available via online reservations at <https://www.alamo.edu/spc/experience-spc/current-students/student-resources/book-loan-program/>. For more information contact Liz Castillo at 210-486-2473.

## Veterans Affairs (MLK Campus)

For more information contact Veronica Griego at 210-486-2540.

<b>Veterans Affairs</b>	Tony Gable	<a href="mailto:lgable@alamo.edu">lgable@alamo.edu</a>	210-486-2521
<b>Certified Academic Advisors:</b>	Gloria (Maria) De Luna	<a href="mailto:mdeluna@alamo.edu">mdeluna@alamo.edu</a>	210-486-2522
	Alicia Stolte	<a href="mailto:astolte2@alamo.edu">astolte2@alamo.edu</a>	210-486-2539

If you receive GI Bill Educational Benefits and are certified at least  $\frac{3}{4}$  time, you could be eligible to work for the Veterans Affairs office. The federal work study positions have flexible work schedules. To apply, call 210-486-2111, or visit <https://www.alamo.edu/spc/admissions/specific-populations/military-dependents/veteran-affairs/>.

## Volunteer Income Tax Assistance – VITA (MLK Campus)

For more information contact Kenneth Bankston at 210-486-2872.

**Event:** No-Cost Volunteer Income Tax Assistance for the SPC Community  
**Date/Time:** Monday, Wednesday, Friday 1:00 pm - 7:00 pm  
Tuesday, Thursday 1:00 pm - 6:00 pm  
Saturday 9:00 am - 3:00 pm  
**Location:** MLK Campus - Bowden Building (BOWD), Room 110  
**Summary:** The VITA office is open through April 15, 2019. Email [spc-vita@alamo.edu](mailto:spc-vita@alamo.edu) or visit <https://www.alamo.edu/spc/experience-spc/campus-life/get-involved/civic-engagement/vita/>.



## Academic and Career Advising Services (SW Campus)

For more information contact Gina Jasso at 210-486-7185.

**Event: New Student Orientation**

**Date/Time:** Mondays 9:30 am – 12:30 pm

**Location:** Industrial Technology Center (ITC), Bldg. 1, Student Services Conference Room B-172A

**Summary:** Check your student email as you will be receiving periodic email from your assigned Certified Academic Advisor with important information. You can register for New Student Orientation at <http://spcweb.alamo.edu/StudentSuccess/Registration.aspx>.

**Event: Academic Advising by Appointment**

**Location:** Industrial Technology Center (ITC), Bldg. 1, Student Services Room B-172

**Summary:** The SWC Advising hotline is 210-486-7281. Please monitor your student ACES email account for important appointment links from your advisor.

**Event: Strategic Job Search Workshop**

**Date/Time:** March 5 12:00 pm – 1:00 pm

**Location:** Industrial Technology Center (ITC), Bldg. 1, Room B-172 Conference Room

**Summary:** Gilbert Palomo will introduce students to the six steps of a strategic job search. For more information contact Gilbert Palomo at 210-486-2056.

**Event: STAR Interview Workshop**

**Date/Time:** March 19 12:00 pm – 1:00 pm

**Location:** Industrial Technology Center (ITC), Bldg. 1, Room B-172 Conference Room

Designed to prepare students for behavioral based interview questions. For more information contact Gilbert Palomo at 210-486-2056.

**Event: Tiger Day**

**Date/Time:** March 20 11:00 am - 2:00 pm, and 4:00 pm – 6:00 pm

**Location:** Industrial Technology Center (ITC), Bldg. 1, Crossroads

**Summary:** Provides an opportunity for students to learn about campus resources, network with their peers, meet their advisor, obtain a student ID, and even apply for graduation.

**Event: Transfer Open House**

**Date/Time:** March 20 11:00 am – 2:00 pm

**Location:** Industrial Technology Center (ITC), Bldg. 1, Crossroads

**Summary:** Provides an opportunity for graduating students to connect with a University representative for transfer options.



## Business Office (SW Campus)

For more information contact Claudia Hernandez at 210-486-7002.



**Event:** **Spring Hours**

**Date/Time:** Monday, Tuesday, Thursday 9:00 am – 1:00 pm (closed 1:00 pm–1:30 pm)  
Wednesday 8:30 am – 3:30 pm (closed 12:30 pm – 1:00 pm)

**Location:** Industrial Technology Center (ITC), Bldg. 1, Student Services, Room B-172

**Summary:** The staff can answer questions about billing, or tuition discounts and waivers. For additional services visit <https://www.alamo.edu/district/business-office/>. Students may send email to [dst-vbo2@alamo.edu](mailto:dst-vbo2@alamo.edu).

## Centers of Excellence for Math and Science (SW Campus)

For more information contact Maria Rodriguez at 210-486-7123, or Dr. Jo D. Duncan at 210-486-7121.

Our programs focus on expanding college and career awareness of science, technology, engineering and mathematics (STEM). Students that engage with us can receive a stipend for their time and effort. Call us, or refer to our website at <https://www.alamo.edu/spc/academics/academic-centers/centers-of-excellence/centers-of-excellence-science/>.

## Counseling Services (SW Campus)

For more information contact Rosalinda Rivas at 210-486-2333.

**DACA Allies** - Find scholarships and legal assistance for Deferred Action for Childhood Arrivals (DACA) at <https://www.alamo.edu/spc/admissions/specific-populations/daca/> or speak confidentially to District Coordinator Carmen de Luna Jones (210-485-2080), SPC Director Elizabeth Castillo (210-486-2473), or SPC Counselor Rosalinda Rivas (210-486-2117).

**Event:** **Personal Counseling – A Safe Space**

**Date/Time:** Monday, Wednesday 8:00 am – 5:00 pm, or 10:00 am – 7:00 pm

**Location:** Industrial Technology Center (ITC), Bldg. 1, Room A-135

**Summary:** Students talk to Counselors about many different types of issues like career and academic concerns, anxiety, relationships, stress associated with deportation/family legal status, trauma, coping with illness, procrastination, and more. Counselors also provide referrals and community resource information. Let's talk about strategies that can help you manage your stress, school and life activities. See important resources at <https://www.alamo.edu/spc/experience-spc/current-students/support-centers/counseling-services/>.

St. Philip's College is committed to providing a supportive leaning environment and to fostering safe, healthy relationships among our students. For more information visit

<https://www.alamo.edu/spc/experience-spc/current-students/support-centers/counseling-services/>

Counselors can help address problems that interfere with your academic growth in college. See a Counselor if you believe your substance use is affecting your academic success.

**SAMHSA's Free Mobile Apps:**  
**Substance Use Treatment Locator:**

[https://www.samhsa.gov/search\\_results?k=substance+use+treatment+locator](https://www.samhsa.gov/search_results?k=substance+use+treatment+locator)

**Substance Abuse and Mental Health Services Administration (SAMHSA)**

**1-800-662-HELP (4357)**

**TTY: 1-800-487-4889**

**Treatment referral and information 24/7**  
[www.samhsa.gov/find-help/national-helpline](http://www.samhsa.gov/find-help/national-helpline)



## Disability Services (SW Campus)

For more information contact Maria Botello at 210-486-2199.



**Event:** **Schedule your appointment.** To be eligible for disability-related services, students must have a disability as defined by the **Americans with Disabilities Act of 1990 (ADA)** and **Section 504 of the Rehabilitation Act of 1973.**

**Date/Time:** Tuesday and Thursday 8:00 am – 5:00 pm

**Location:** Industrial Technology Center (ITC), Bldg. 1, Room A-135

**Summary:** Disability Services ensures reasonable academic support to qualifying students with disabilities. We follow national best practices to ensure that our students have access to the latest information and technologies. DS provides support, referrals and encouragement for our students with disabilities. See <https://www.alamo.edu/spc/experience-spc/current-students/support-centers/disability-services/>.

## Library Resources and Services (SW Campus)

For more information contact April Schramm (210-486-2357) or Andrew Rivera (210-486-2564).

**Event:** **Spring Hours**

**Date/Time:** Monday – Thursday 8:00 am – 7:00 pm  
Friday 8:00 am – 5:00 pm

**Location:** Industrial Technology Center (ITC), Bldg. 1, Room C-123

**Summary:** Individual Research Assistance Appointments are available at both campuses, to request an appointment go to <https://www.alamo.edu/spc/experience-spc/current-students/student-resources/library/ira-form/>. In-Library Use Laptops are now available!!! Please see the Circulation Desk on the first floor of the library for more information!



## Student Financial Services (SW Campus)

For more information contact Grace Zapata 210-486-2269.

**Event:** **Spring Office Hours**

**Day/Time:** Monday, Tuesday, Thursday, Friday 8:00 am – 12 noon  
Wednesday 3:00 pm – 7:00 pm

**Location:** Industrial Technology Center (ITC), Bldg. 1, Student Services Room B-172

**Summary:** No appointment necessary. Stop by to see the Financial Aid Advisors at SWC to learn more about Federal Work Study positions and the application process. There may be an opening for you! For more Financial Aid news (priority dates, deadlines, resources and more), call our staff at 210-21ALAMO (210-212-5266), or visit: <https://www.alamo.edu/spc/admissions/pay-for-college/financial-aid/>.

DREAMers  
Need Assistance Applying for State Aid?  
Texas Application for State Financial Aid  
(TASFA)

Call the Community Education & Training Centers near you to schedule an appointment at:

<b>Brackenridge (Eastside) Center</b> 532 N. Center San Antonio, TX 78202 (210) 485-0280	<b>Harlandale (Southside) Center</b> 901 March Avenue San Antonio, TX 78214 (210) 989-5999
---	---

[www.alamo.edu/district/etc](http://www.alamo.edu/district/etc)  
[www.alamo.edu/district/daca](http://www.alamo.edu/district/daca)

The Alamo Colleges District does not discriminate on the basis of race, color, religion, gender, national origin, age, disability, veteran status, genetic information or sexual orientation with respect to access, employment program, or services. Notices or complaints concerning these matters should be brought to the attention of Associate Vice Chancellor of Human Resources and Organizational Development, Title IX Coordinator, (210) 639-0200, Address: Human Resources Department, 201 W. Shanken, Box A, San Antonio, Texas 78202.

# Student Life (SW Campus)

For more information contact Paul Lede at 210-486-2581.



**Event: Spirit Day with Birthday Cake**

**Date/Time:** March 6 11:00 am – 1:00 pm

**Location:** Industrial Technology Center (ITC), Bldg. 1, Crossroads

**Summary:** Wear your favorite St. Philip's shirt or wear our school colors (royal blue and white) and enjoy some birthday cake!

**Event: Bowling for a Cause**

**Date/Time:** March 6 11:00 am – 2:00 pm

**Location:** Tiger Lanes Bowling Alley

**Summary:** Transportation is provided – meet at 10:30 am in front of the Industrial Technology Center, Bldg. 1. Come join us in Tiger Lanes for some co-curricular fun! There will be free food, bowling, and awareness as we discuss building healthy relationships.

**Event: Spirit Days**

**Date/Time:** March 20 and 27 11:00 am – 1:00 pm

**Location:** Building 1, Crossroads

**Summary:** Meet your Student Government Association officers and members of SPC student organizations. Join an organization or start your own. Wear your favorite St. Philip's shirt or wear our school colors!

**Event: Men of SPC Social**

**Date/Time:** March 20 12:00 noon – 1:30 pm

**Location:** Industrial Technology Center (ITC), Bldg. 1, Tiger Bistro

**Summary:** All students who participate will be entered in a drawing for an opportunity to win prizes! For more information contact Paul Lede (210-486-2581), or Dr. Paul Machen (210-486-2157).



**Event: Lunch and Lead Session**

**Date/Time:** March 22 12:00 pm – 1:00 pm

**Location:** Building 1, Student Support Services Conference Room, B172A

**Summary:** Come join us for an engaging hour of leadership, event planning support, and essential updates from the Department of Student Life. RSVP in AlamoSYNC – brunch will be provided.

**Event: Spring Flex II Welcome Tables**

**Date/Time:** March 25 and 26 7:00 am – 6:00 pm

**Location:** Building 1 Crossroads

**Summary:** The Department of Student Life will assist in printing schedules, getting directions and maps, and provide snacks under the blue tent.

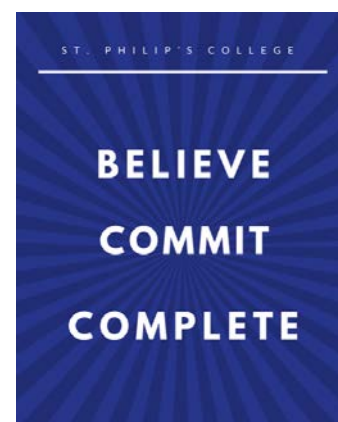
# Tutoring Services & Service Learning (SW Campus)

For more information contact Elizabeth Castillo at 210-486-2473.

**DACA Allies** - Find more resources (such as access to scholarships and legal assistance) for **Deferred Action for Childhood Arrivals (DACA)** at <https://www.alamo.edu/spc/admissions/specific-populations/daca/>, or speak confidentially to District Coordinator Carmen de Luna Jones (210-485-2080), SPC Director Liz Castillo (210-486-2473), or SPC Counselor Rosalinda Rivas (210-486-2117).



**Event:** **Passport to Completion**  
**Date:** March 25 – March 29  
**Location:** Industrial Technology Center (ITC), Bldg. 1, Room A-135A  
**Summary:** Learn about different departments on campus designed to help in your academic and personal growth. Passport to Completion is a fun way to connect students with tutors, counselors, advisors, advocates and friends. By completing any two activities on the Passport to Completion, students win a free Commit to Complete T-Shirt. Students, pick up your Passport to Completion in ITC, Room A-135A beginning March 25.



## **SPC Safe SPACE Student Success & Advocacy Center**

**Event:** **Helping Students Succeed at SPC-SWC**  
**Location:** Industrial Technology Center (ITC), Bldg. 1, Student Services Room B-172  
**Summary:** The SPC **Safe SPACE** Student Success & Advocacy Center provides free services for students such as a quick Grab 'N Go snack, and possible access to a one-time emergency aid program through Trellis. Learn more by contacting Liz Castillo at 210-486-2473, or Enida Rehome at 210-486-2140.

ALAMO COLLEGES DISTRICT  
St. Philip's College



**Event:** **Food Drive at SWC**  
**Date:** March 1 – March 29  
**Location:** Industrial Technology Center (ITC), Bldg. 1, Room A-135A  
**Summary:** Support our Food Drive by donating non-perishable items at any **Safe SPACE** food drive receptacles located in A-135. If you have questions, contact Liz Castillo at 210-486-2473.



## **Financial Literacy Program**

**Event:** **Free Online Financial Coaching**  
**Date/Time:** By appointment  
**Location:** <https://www.aie.org/coaching/>  
**Summary:** This free service in partnership with Trellis is designed to help you make smart financial decisions. For more information contact Enida Rehome at 210-486-2140.

## **Tutoring Services and Perpetual Book Loan Program**

**Event:** **General tutoring, a great place to study, and free Book Loan Program!**  
**Date/Time:** Tuesday and Thursday 10:00 am – 12:00 pm, and 1:00 pm – 4:00 pm  
**Location:** Industrial Technology Center (ITC), Bldg. 1, Library, Room C-123N  
**Summary:** Tutoring in speech, history, business, accounting (I and II) and Spanish. Call 210-486-2527 or visit <https://www.alamo.edu/spc/academics/academic-resources/tutoring-centers/tutoring-and-technology-center/>. The Perpetual Book Loan Program is offered year-round and is available via online reservations at <https://www.alamo.edu/spc/experience-spc/current-students/student-resources/book-loan-program/>. For more information contact Liz Castillo at 210-486-2473.

## Veterans Affairs (SW Campus)

For more information contact Veronica Griego at 210-486-2540.

<b>Veterans Affairs</b>	Tony Gable	<a href="mailto:lgable@alamo.edu">lgable@alamo.edu</a>	210-486-2521
<b>Certified Academic Advisors:</b>	Gloria (Maria) De Luna	<a href="mailto:mdeluna@alamo.edu">mdeluna@alamo.edu</a>	210-486-2522
	Alicia Stolte	<a href="mailto:astolte2@alamo.edu">astolte2@alamo.edu</a>	210-486-2539

### Event: Spring Office Hours

**Day/Time:** Tuesdays 8:00 am – 12 noon  
Wednesdays 3:00 pm – 7:00 pm

**Location:** Advising Office, Industrial Technology Center (ITC), Bldg. 1, Student Services Room B-172

**Summary:** Stop by to see the VA Academic Advisors at SWC. For more information visit our website at <https://www.alamo.edu/spc/admissions/specific-populations/military-dependents/veteran-affairs/>.

### Event: **Employment Workshop Series – Resume Building Part 2**

**Day/Time:** March 4 11:30 am – 1:30 pm

**Location:** Industrial Technology Center (ITC), Bldg. 1, Library

**Summary:** In Session 2 military, veteran or a dependent family member attending St. Philip's College may attend this free event and gain insight on what employment recruiters look for, and gain experience on handling the job interview process. Lunch is provided, and space is limited. For more information contact Betsy Hamilton at 210-486-2610.

## Workforce Solutions Alamo (SW Campus)

For more information contact Andrea Curd or Oscar Acosta at 210-486-2008.

### Event: **Ready, Set, Go! Start Your Career - We Help with Employment Information and Opportunities**

**Date/Time:** Wednesday and Thursday 8:00 am – 5:00 pm

**Location:** Industrial Technology Center (ITC), Bldg. 1, Room D-109

**Summary:** A case manager is available two days per week to assist students with internships, job search skills and employment opportunities in the occupational fields of Information Technology, Advanced Manufacturing, Health and Construction. We will also host career fairs on both campuses.





# Deferred Action for Childhood Arrivals (DACA)

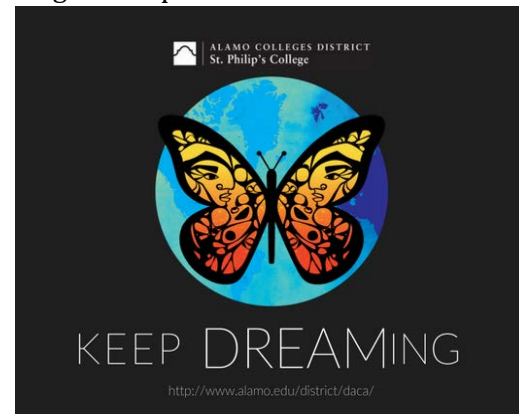
For more information contact Carmen de Luna Jones at 210-485-0280.

To locate resources on immigrant rights to advocate for yourself and protect your community, visit <https://www.alamo.edu/spc/admissions/specific-populations/daca/>. View an important immigrant's training video, "Know Your Rights & Family Preparedness". The video can also be viewed in Spanish.

## What should I do if I believe an enforcement action has taken place that is inconsistent with this guidance?

DHS has explained that there are a number of locations where an individual may lodge a complaint with DHS about a particular immigration enforcement action that may have taken place in violation of these or other policies. You may find information about these locations, and information about how to file a complaint, on the DHS website at <https://www.dhs.gov/>, the CBP website at <https://www.cbp.gov/>, or ICE website at <https://www.ice.gov/>.

You may contact ICE Enforcement and Removal Operations (ERO) through the Detention Reporting and Information Line at 888-351-4024 or through the ERO information email address at [ERO.INFO@ice.dhs.gov](mailto:ERO.INFO@ice.dhs.gov), also available at <https://www.ice.gov/webform/ero-contact-form>. The Civil Liberties Division of the ICE Office of Diversity and Civil Rights may be contacted at 202-732-0092 or [ICE.Civil.Liberties@ice.dhs.gov](mailto:ICE.Civil.Liberties@ice.dhs.gov).



You may contact the CBP Information Center to file a complaint or compliment via phone at 877-227-5511, or submit an email through the website at <https://help.cbp.gov>.

## Where should I report discrimination if I believe it is taking place in my school?

Anyone with information about discrimination occurring in schools, including discrimination on the basis of race, color, or national origin (which may include citizenship or immigration status), may file a complaint by contacting the U.S. Department of Education, Office for Civil Rights via <https://www.state.gov/s/ocr/>, 800-421-3481 or TDD: 800-877-8339 (for language assistance contact 800-USA-LEARN (800-872-5327)) or by contacting the U.S. Department of Justice, Civil Rights Division, Educational Opportunities Section via <https://www.justice.gov/crt/educational-opportunities-section>, 877-292-3804, or TTY: 800-514-0383.

## Will enforcement actions ever occur at sensitive locations?

DHS has explained that immigration enforcement actions may occur at sensitive locations in limited circumstances, but should generally be avoided. DHS officers and agents from U.S. Immigration and Customs Enforcement (ICE) or U.S. Customs and Border Protection (CBP) may conduct an enforcement action at a sensitive location only with prior approval from an appropriate supervisory DHS official, or if the enforcement action involves exigent circumstances related to national security, terrorism, or public safety, or where there is imminent risk of destruction of evidence material to an ongoing criminal case.

For more information about these civil rights protections, please see the U.S. Department of Education (ED) and U.S. Department of Justice joint Dear Colleague letter

<https://www2.ed.gov/about/offices/list/ocr/letters/colleague-201309.html>

**ALAMO COLLEGES DISTRICT**

DREAMers  
Need Assistance Applying for State Aid?  
**Texas Application for State Financial Aid (TASFA)**



Call the Community Education & Training Centers near you to schedule an appointment at:

<b>Brackenridge (Eastside) Center</b>	<b>Harlandale (Southside) Center</b>
532 N. Center San Antonio, TX 78202 (210) 485-0280	901 March Avenue San Antonio, TX 78214 (210) 989-5999

[www.alamo.edu/district/etc](http://www.alamo.edu/district/etc)  
[www.alamo.edu/district/daca](http://www.alamo.edu/district/daca)

The Alamo Colleges District does not discriminate on the basis of race, color, religion, gender, national origin, age, disability, veteran status, genetic information or sexual orientation with respect to access, employment programs, or services. Inquiries or complaints concerning these matters should be brought to the attention of Associate Vice Chancellor of Human Resources and Organizational Development, Title IX Coordinator, (210) 485-0200. Address: Human Resources Department, 201 W. Sheridan, Bld. A, San Antonio, Texas 78204.



## FACT SHEET FOR FAMILIES AND SCHOOL STAFF: LIMITATIONS ON DHS IMMIGRATION ENFORCEMENT ACTIONS AT SENSITIVE LOCATIONS

All children have a right to a free public education, regardless of their actual or perceived immigration or citizenship status or that of their parents.<sup>1</sup> Education leaders, teachers, students, and families, have asked questions about guidance that was released by the U.S. Department of Homeland Security (DHS) that limits immigration enforcement actions from occurring at schools and other “sensitive locations.” This DHS guidance is at: <https://www.cbp.gov/border-security/sensitive-locations-faqs>. To respond to those questions, the U.S. Department of Education has worked with DHS to prepare this fact sheet, intended to help parents, families, educators, and other school staff understand the DHS guidance.

In general, DHS has explained that immigration enforcement actions may not occur at or in “sensitive locations.”

These locations include:



Schools, such as known and licensed daycares, pre-schools and other early learning programs; primary schools; secondary schools; post-secondary schools up to and including colleges and universities; as well as scholastic or education-related activities or events.



School bus stops that are marked and/or known to the officer, during periods when children are present at the stop.



Medical treatment and health care facilities, such as hospitals, doctors' offices, accredited health clinics, and emergent or urgent care facilities.



Places of worship, such as churches, synagogues, mosques, and temples.



Religious or civil ceremonies or observances, such as funerals and weddings.



During public demonstrations, such as a march, rally, or parade.

# Alamo Colleges Office of Experiential Learning (ACD)

For more information contact Dr. Martha Trevino at 210-485-0280.



Contact Martha Trevino for important information about proper formatting before submission of documents.

Dr. Trevino is at 8300 Pat Booker, San Antonio, TX 78233  
[Mtrevino114@alamo.edu](mailto:Mtrevino114@alamo.edu);  
[Mtrevino7789@aol.com](mailto:Mtrevino7789@aol.com)  
(210-556-7789).

## TOPICS

Navigate Internship Websites

Finalize your Resume

Create your Cover Letter Template

Locate Academic Documents

Request Recommendations and References



ALAMO  
COLLEGES  
DISTRICT

## BUILD YOUR PAID SUMMER 2019 INTERNSHIP APPLICATION

San Antonio College, Location TBD

Friday, March 08, 2019  
Friday, March 15, 2019

8:30am-12:00pm

### Requirements to Attend

Commit to attend the entire 3.5-hr session

Bring Hardcopy of draft **STANDARD** resume\*

Bring on a pin drive

- **STANDARD** resume
- Sample cover letter
- Copy of enrollment verification
- Copy of unofficial transcript

### To RSVP

Email name, session date & two email addresses to

[mtrevino114@alamo.edu](mailto:mtrevino114@alamo.edu) by

Mar 04 for the March 08 session

Mar 11 for the March 15 session

**RSVP will be confirmed AFTER receipt  
of requested student information**

## Inclement Weather Closure

Dear Students and  
Employees,

Please be safe and take  
precaution. For the most  
up-to-date information on  
college closures, go to  
[alamo.edu/spc](http://alamo.edu/spc) or check  
social media channels.

The weather line is:

210-485-0189

# Scholarships and Giving Back Opportunities for Students

The **2019 - 2020 SPC Scholarship** on-line application opens January 7, 2019. The Priority Deadline is March 31<sup>st</sup> and the Final Deadline is September 8. Amounts vary from \$150 - \$4,000. All students are encouraged to apply at [alamo.edu/spc/admissions/pay-for-college/scholarships/](http://alamo.edu/spc/admissions/pay-for-college/scholarships/).

The **2019 - 2020 T-STEM Scholarship** is still available for declared science, technology, engineering or mathematics programs, including specific Allied Health, Advanced Machining, and Aviation. Bring your high school transcript to the Scholarship Office in SLC 319E for review of eligibility. Amounts up to \$2,500. Contact Gloria Hernandez, 210-486-2498. Click on [Learn more](#) or visit <https://www.alamo.edu/experience-the-alamo-colleges/current-students/student-opportunities/t-stem-scholarships/>.

The **ETS Presidential Scholarship for HBCU Students** is now available. Deadline: Friday, March 15, 2019. Deadline for recommendations is Friday, March 29<sup>th</sup>. Applicants must attend an HBCU, hold a sophomore standing, be enrolled full time, have a minimum GPA of 3.5, and have financial need. For the application visit <https://www.uapb.edu/sites/www/Uploads/SSC/PresidentialScholar.pdf>.

## U.S. Congressman Lloyd Doggett Seeks Interns for S.A. District Office

**Attention All St. Philip's College SGA Representatives:** Congressional interns are an integral part of the public service provided by our office (constituent services, community outreach; communicating with constituents, legislative work). Good communication, writing, and computer skills are essential.

Applications are being accepted now and will be considered on a rolling basis.

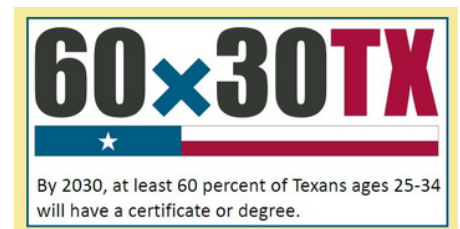
SGA representatives interested in an internship should submit a resume, cover letter, and a list of three references via email to [brendan.kennedy@mail.house.gov](mailto:brendan.kennedy@mail.house.gov). No calls or drop-ins.

## College for All Texans: 2018-19 Educational Aid Exemption (EAE) Application

*For more information, contact Alan David Ahmad at 210-485-0613.*

The **EAE** is available to eligible students taking courses toward teacher certification and pays for the tuition and required fees for said coursework in the semester for which it was applied. The **Advisor-Cert-Form** is also available in the Student Financial Services office on your campus. For more information go to <http://www.collegeforalltexas.com/apps/financialaid/tofa2.cfm?ID=572>.

1. Both the student and authorized school official (at the place of their employment verifying employment) must complete and sign off on the application.
2. The completed application is brought to the SPC Certified Academic Advisor.
3. The Certified Academic Advisor completes the **Advisor-Cert-Form**.
4. Your completed forms and information are forwarded to the Student Financial Services office on your campus.
5. Awarding and applying the funds will be processed by the office of Student Financial Services on your campus.
6. Application must be completed and processed each semester that student is seeking funds.





disABLEDperson, Inc. announce our Spring 2019 National Scholarship Competition for College Students with Disabilities! This competition begins on January 23, 2019 and ends on March 23, 2019 for the award of \$2500.00! Details at [www.disABLEDperson.com](http://www.disABLEDperson.com).

To participate: Write an essay with no more than 1000 words (prompt can be found [HERE](#)). Next, you need to register for the competition. To do so click on "[Register Now](#)" link below. Fill out the form completely and paste your essay into the form.



## HBCU Student Opportunities

### **Summer Internship: U. S. Department of Education, White House Initiative on Historically Black Colleges and Universities**

The Department of Education (ED) offers internships for interested students seeking valuable work experience in government and federal education policy and administration. Student volunteers have the opportunity to make meaningful contributions to the Department's mission to promote student achievement and preparation for global competitiveness by fostering educational excellence and ensuring equal access.

ED offers internships in the fall, winter/spring, and summer. Typically interns are with the Department for eight to ten weeks (some can stay shorter or longer depending on circumstances). For more details click on [the student intern page on ED.gov](#) or go to [https://www2.ed.gov/students/prep/job/intern/index.html?utm\\_content=&utm\\_medium=email&utm\\_name=&utm\\_source=gov\\_delivery&utm\\_term=](https://www2.ed.gov/students/prep/job/intern/index.html?utm_content=&utm_medium=email&utm_name=&utm_source=gov_delivery&utm_term=).

If you are interested in interning at the Department of Education, White House Initiative on Historically Black Colleges and Universities please send your resume and interest statement to Elyse Jones at: [Elyse.Jones@ed.gov](mailto:Elyse.Jones@ed.gov) no later than **March 11, 2019**.

### **WHIHBCU Competitiveness Scholar Nomination Form NOW AVAILABLE!**

The White House Initiative on Historically Black Colleges and Universities ([Initiative](#)) is excited to announce that the 2019 HBCU Competitiveness Scholars nomination period is now open! Last year we had 63 scholars representative of 54 HBCUs and this year we expect an even greater turn out!

This student recognition program is designed to honor current HBCU students for their competitiveness, i.e., successfully preparing to compete for top opportunities that improve standards of living in their communities. For the specified academic school year, Scholars will serve as representatives to the Initiative of their respective institutions and communities. The Initiative will provide outreach and engagement opportunities for Scholars as well as information and resources to disseminate among their fellow students. Scholars will participate in regional events, webinars, and monthly web chats with Initiative staff and other professionals from a wide range of disciplines. Scholars also will have opportunities to engage with one another to showcase individual and collective talent across the HBCU spectrum.

The President or Chancellor will determine the nominee from their institution. The Initiative will accept no more than one nominee per school. Although each HBCU is allowed one (1) nominee, institutions may appeal to the Initiative for one (1) additional nominee. The WHIHBCU will work with the President or Chancellor on a case-by-case basis to review, approve or deny each appeal. The HBCU Competitiveness Scholar nomination form must be endorsed and submitted by the President, Chancellor or designated surrogate. The Initiative will electronically collect nominations and narrative responses.

More information on how to apply and eligibility is attached and can be found [HERE](#) all nomination forms must be sent to: [hbcuscholars@ed.gov](mailto:hbcuscholars@ed.gov) by the submission deadline **April 30, 2019**.

# HBCU Student Opportunities (continued)

## NOMINATE YOUR COMPETITIVENESS SCHOLAR TODAY!

### MPAA Sponsored Contest for Historically Black Colleges and Universities (HBCUs) Students

This year, as part of their commitment to support emerging creators from diverse backgrounds, the MPAA is holding a contest (this "Contest") to design the cover of its annual report on the global Theatrical and Home Entertainment Market Environment ("THEME"). For the first time ever, eligible students in creative disciplines at Historically Black Colleges and Universities (HBCUs) are invited to exercise their creativity and compete for cash prizes.

The contest rules can be found [here](#) or at [https://sites.ed.gov/whhbcu/whihbcu-competitiveness-scholars/?utm\\_content=&utm\\_medium=email&utm\\_name=&utm\\_source=govdelivery&utm\\_term=](https://sites.ed.gov/whhbcu/whihbcu-competitiveness-scholars/?utm_content=&utm_medium=email&utm_name=&utm_source=govdelivery&utm_term=). We do ask for your apologies for the short turnaround period but as this is the very first contest of this nature. The winner will be announced in the upcoming weeks as the report goes to print at the end of March 2019.

### The White House Initiative on Historically Black Colleges and Universities



**VISTA**  
Volunteers in Service to America

**The Immigration Liaison is hiring a VISTA volunteer**

The Immigration Liaison is looking for a VISTA AmeriCorps volunteer to serve for one year supporting the civic engagement work of the office. The VISTA volunteer will receive a monthly stipend and either an education credit or cash stipend at the conclusion of their year of service.

The VISTA must be either a U.S. Citizen, Legal Permanent Resident, have Asylee or Refugee status, or have DACA. Come work with the Immigration Liaison to help engage with San Antonio's Immigrant and Refugee communities and design initiatives and programs that will improve the quality of life and access to services for all San Antonio residents.

For more information click on the link below or contact the [Immigration Liaison](#):

<https://my.americorps.gov/mp/listing/viewListing.do?id=85550&fromSearch=true>

**Saturday March 9th**  
9:00 am – 2:00 pm  
Palo Alto College  
Ozuna Library and Learning Center  
1400 W. Villaret Blvd  
San Antonio, Texas 78224  
*\*Application services limited to the first 100 people*

**Citizenship Workshop**

**YOU MUST BRING:**

- Your permanent resident card (green card)
- State Identification or Driver's License
- All police and court records if you have ever been arrested, cited, detained, or charged

**INFORMATION:**

- Addresses, work, and schooling (last 5 years)
- All trips outside of the U.S. (last 5 years), and current and expired passports

**For information call**  
**American Gateways**  
**(210) 521-4768 ext. 232**



### Citizenship Classes

Register via telephone by calling 210-207-9168. The course will be 16 weeks long and space is strictly limited. Textbooks will be provided. Please call Emily Flores with questions about registering for the course at 210.207.9168.

Every Friday beginning February 1, 10:00 am to 1:00 pm.  
Bazan Branch Library 2200 W. Commerce, 78207 210.207.9168

