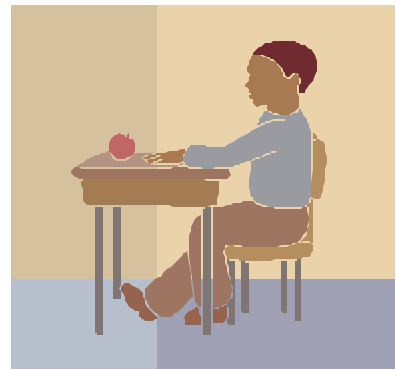


ST. PHILIP'S COLLEGE

STUDENT PROFILE TRENDS



ENROLLMENT TRENDS
DAY / EVENING
AGE
GENDER
ETHNICITY
FTIC
FEEDER HIGH SCHOOLS
FEEDER ZIP CODES
RETENTION



FALL 1998 – FALL 2005

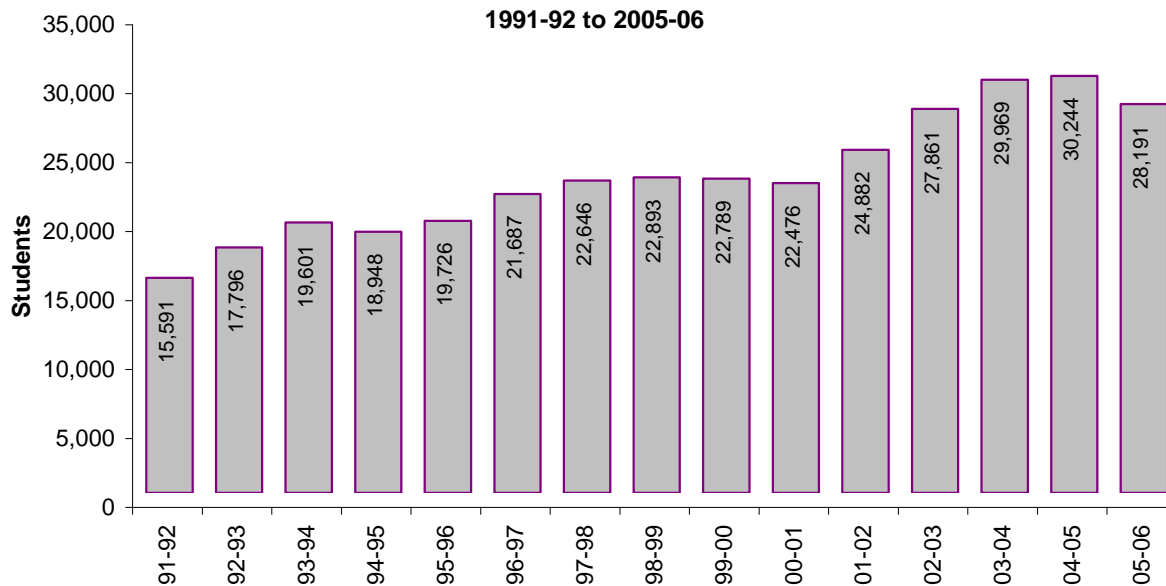
CONTENTS

	Page
ENROLLMENT TRENDS – FALL 1991 TO FALL 2005.....	1
DAY/EVENING.....	2
DAY/EVENING (Percentage).....	3
AGE.....	4-5
AGE (Percentage).....	6-7
GENDER.....	8
GENDER (Percentage).....	9
AGE & GENDER.....	10
AGE & GENDER (Percentage).....	11
ETHNICITY.....	12
ETHNICITY (Percentage).....	13
FTIC.....	14
FITC (Percentage).....	15
FEEDER HIGH SCHOOLS.....	16
FEEDER ZIP CODES.....	17
RETENTION.....	18

ST. PHILIP'S COLLEGE
ENROLLMENT TRENDS
1991-92 TO 2005-06

Year	Fall			Spring			Summer			Total
		Fall Flex II	Spring,	Total	Spring Flex II	Summer I	Total	Summer II		
05-06	10,187	1,396	9,730	11,126	1,378	3,617	4,995	1,883	28,191	
04-05	10,575	1,633	10,234	11,867	1,406	4,493	5,899	1,903	30,244	
03-04	9,880	1,777	10,191	11,968	1,593	4,611	6,204	1,917	29,969	
02-03	9,336	1,392	9,648	11,040	1,609	4,216	5,825	1,660	27,861	
01-02	8,630	1,060	8,692	9,752	1,333	3,859	5,192	1,308	24,882	
00-01	8,293	1,077	7,787	8,864	1,391	2,903	4,294	1,025	22,476	
99-00	8,072	940	8,001	8,941	1,336	3,204	4,540	1,236	22,789	
98-99*	8,302	873	8,013	8,886	977	3,525	4,502	1,203	22,893	
97-98	8,259	813	8,009	8,822	1,023	3,611	4,634	931	22,646	
96-97	7,865	901	7,905	8,806	1,047	3,218	4,265	751	21,687	
95-96	7,126	639	7,220	7,859	756	3,155	3,911	830	19,726	
94-95	7,270	494	7,084	7,578	544	3,003	3,547	553	18,948	
93-94	7,277	474	7,330	7,804	588	3,357	3,945	575	19,601	
92-93	6,643	166	6,989	7,155	---	3,477	3,477	521	17,796	
91-92	5,844	98	6,000	6,098	---	3,106	3,106	543	15,591	

**St. Philip's College
Enrollment Trends
Full Year
1991-92 to 2005-06**

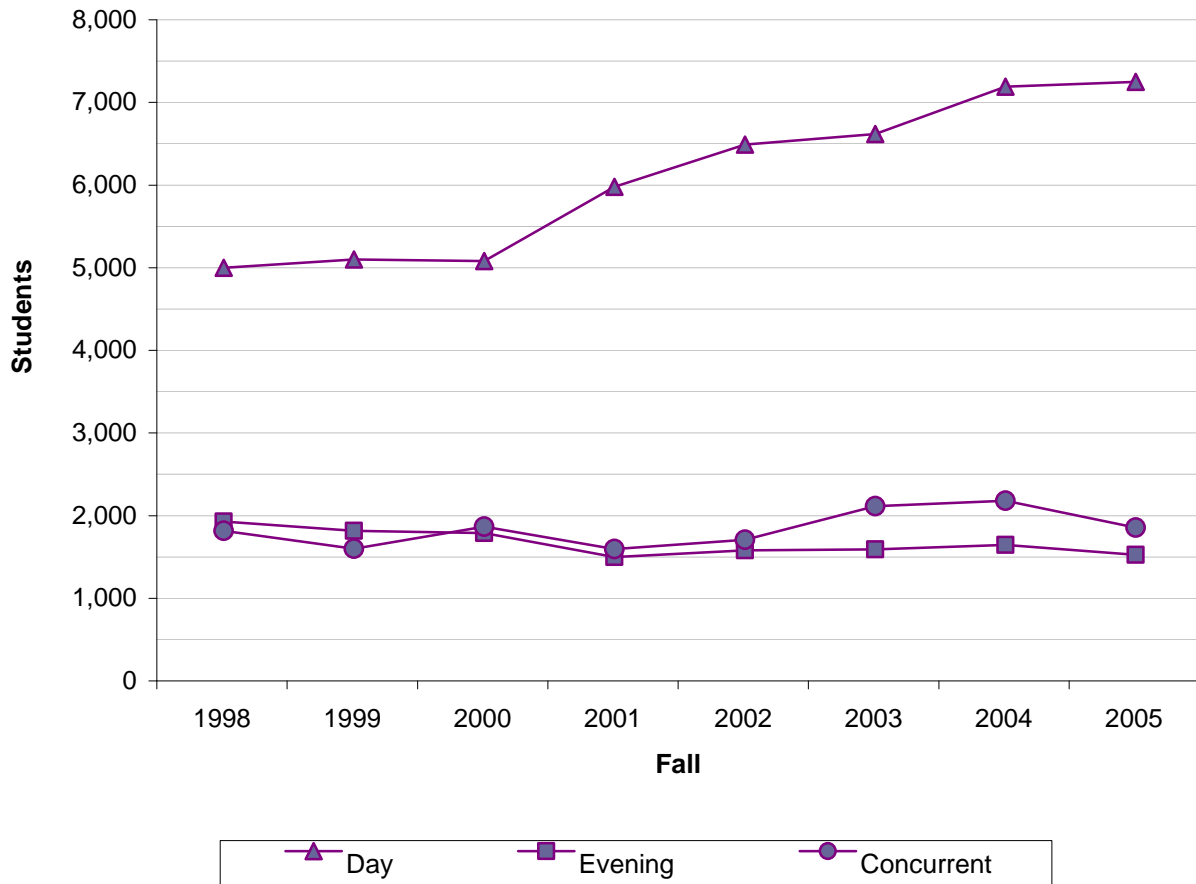


*Summer II '99 includes 173 for special sessions for Allied Health & Nursing

ST. PHILIP'S COLLEGE DAY/EVENING ENROLLMENT TREND

TOTAL STUDENTS

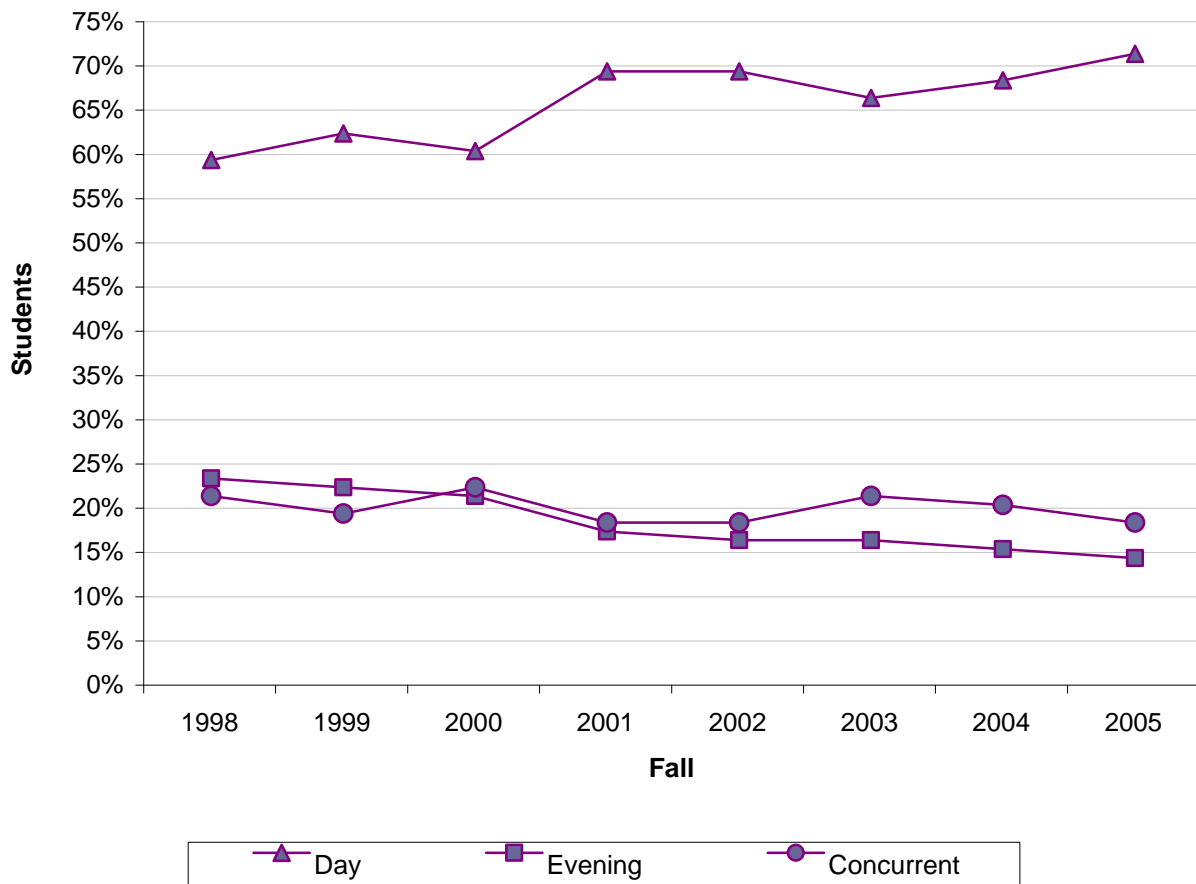
	1998	1999	2000	2001	2002	2003	2004	2005
Day	4,853	4,952	4,932	5,831	6,344	6,469	7,042	7,101
Evening	1,782	1,669	1,640	1,351	1,431	1,445	1,500	1,379
Concurrent	1,668	1,451	1,718	1,448	1,561	1,966	2,033	1,707



ST. PHILIP'S COLLEGE DAY/EVENING ENROLLMENT TREND

PERCENTAGE

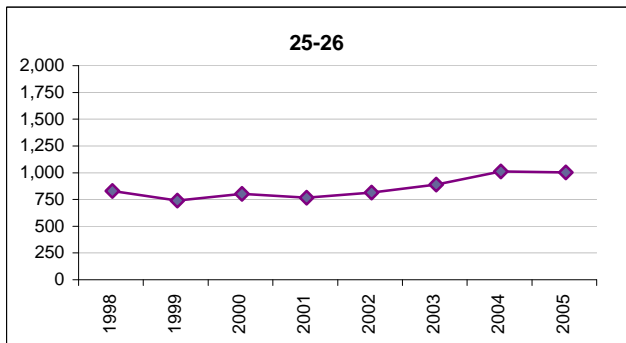
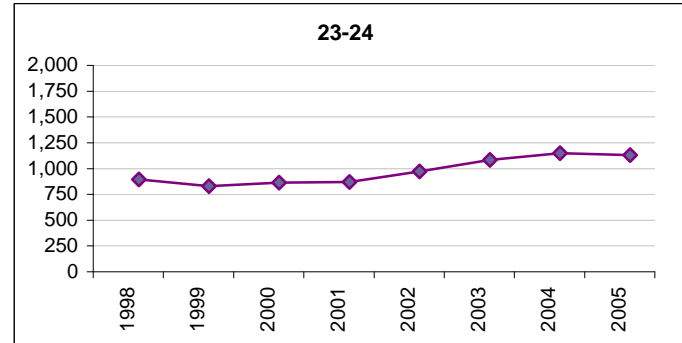
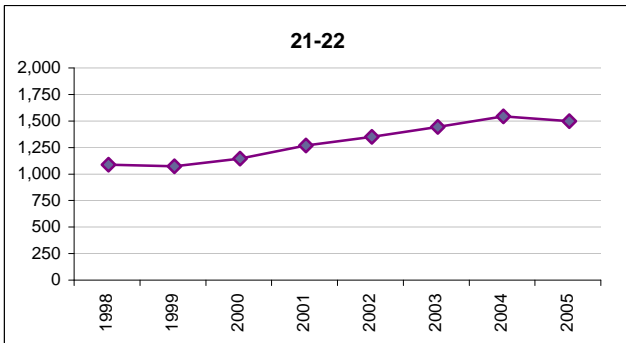
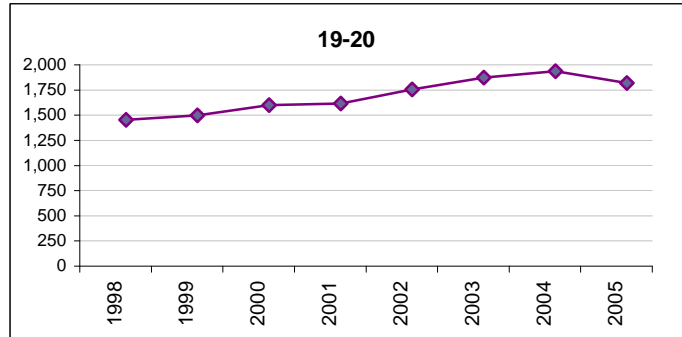
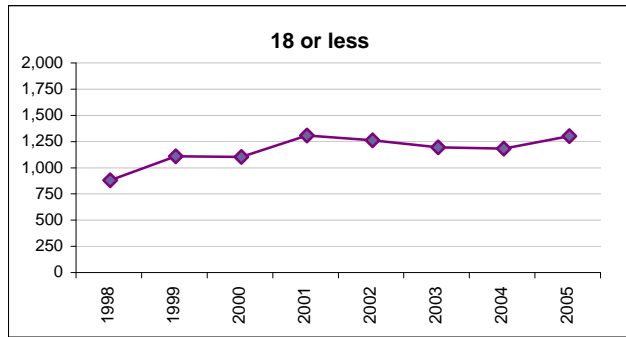
	1998	1999	2000	2001	2002	2003	2004	2005
Day	58%	61%	59%	68%	68%	65%	67%	70%
Evening	22%	21%	20%	16%	15%	15%	14%	13%
Concurrent	20%	18%	21%	17%	17%	20%	19%	17%



ST. PHILIP'S COLLEGE AGE ENROLLMENT TREND

TOTAL STUDENTS

AGE	1998	1999	2000	2001	2002	2003	2004	2005
18 or less	778	1,007	1,002	1,206	1,160	1,092	1,080	1,200
19-20	1,348	1,392	1,494	1,509	1,651	1,768	1,831	1,713
21-22	941	927	999	1,121	1,205	1,296	1,397	1,352
23-24	745	679	713	719	823	934	999	979
25-26	637	546	610	573	623	698	818	809

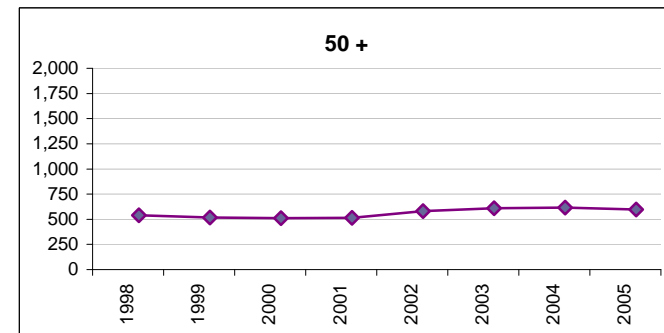
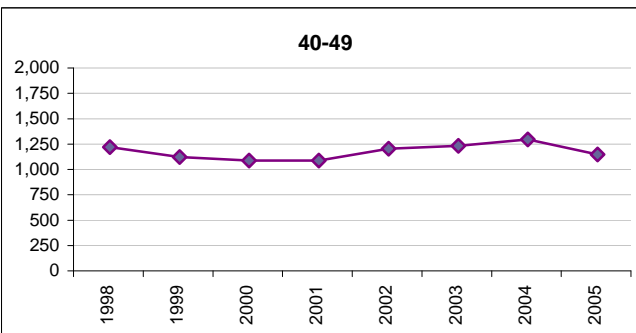
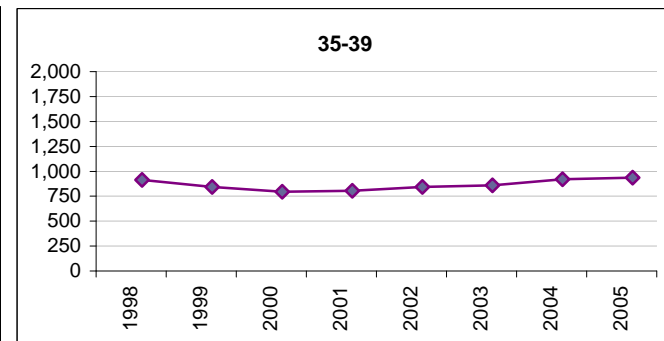
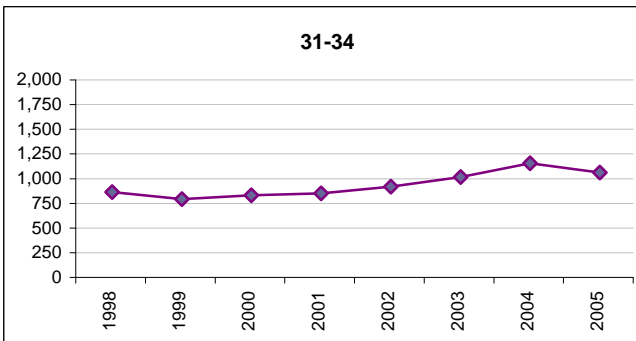
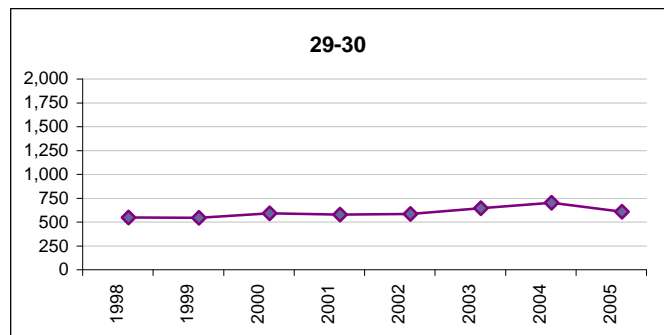
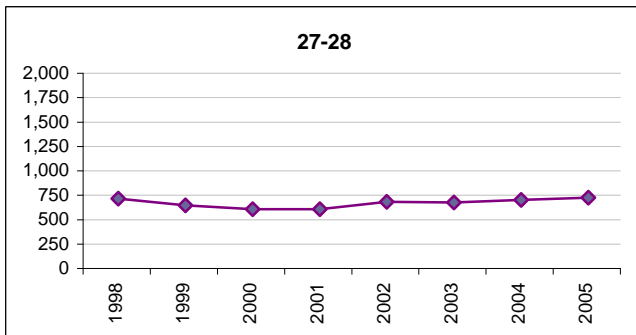


CONTINUED NEXT PAGE

ST. PHILIP'S COLLEGE AGE ENROLLMENT TREND

TOTAL STUDENTS

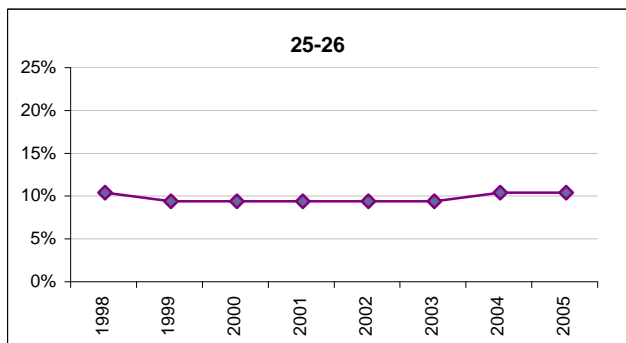
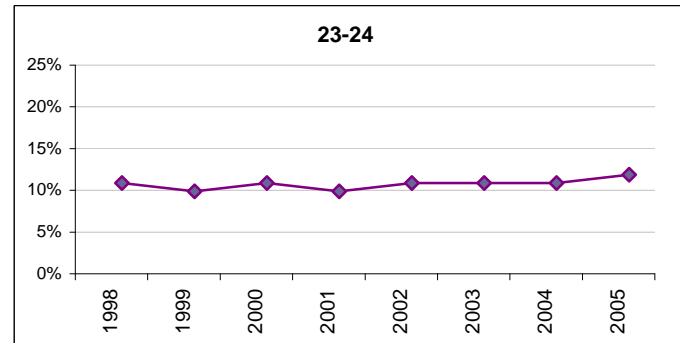
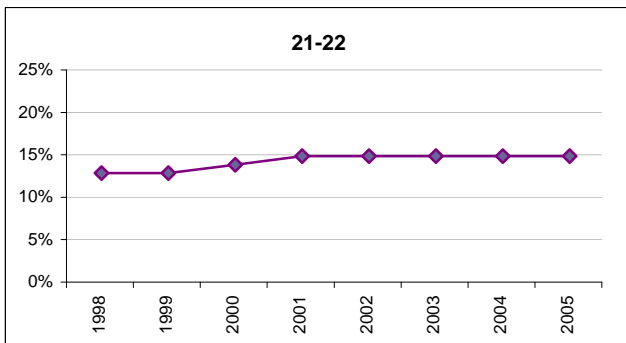
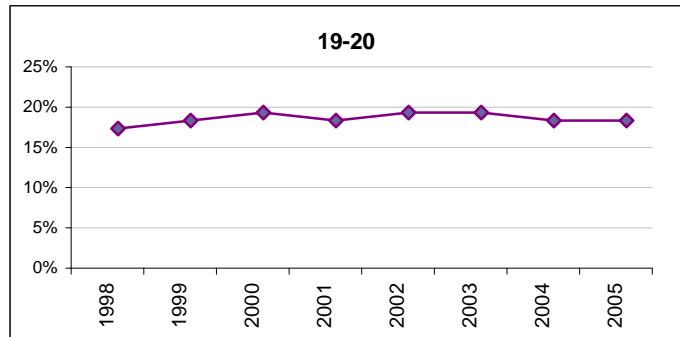
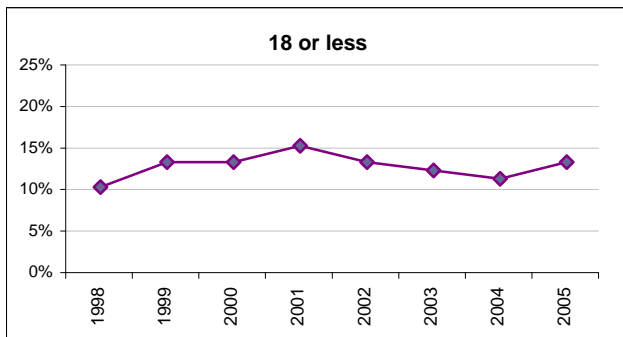
AGE	1998	1999	2000	2001	2002	2003	2004	2005
27-28	605	538	497	500	574	567	594	617
29-30	436	432	479	466	474	534	592	498
31-34	706	635	673	693	762	858	998	904
35-39	757	686	638	650	688	702	764	781
40-49	1,015	917	882	884	1,000	1,028	1,093	943
50 +	335	313	306	309	376	403	409	391



ST. PHILIP'S COLLEGE AGE ENROLLMENT TREND

PERCENTAGE

AGE	1998	1999	2000	2001	2002	2003	2004	2005
18 or less	9%	12%	12%	14%	12%	11%	10%	12%
19-20	16%	17%	18%	17%	18%	18%	17%	17%
21-22	11%	11%	12%	13%	13%	13%	13%	13%
23-24	9%	8%	9%	8%	9%	9%	9%	10%
25-26	8%	7%	7%	7%	7%	7%	8%	8%

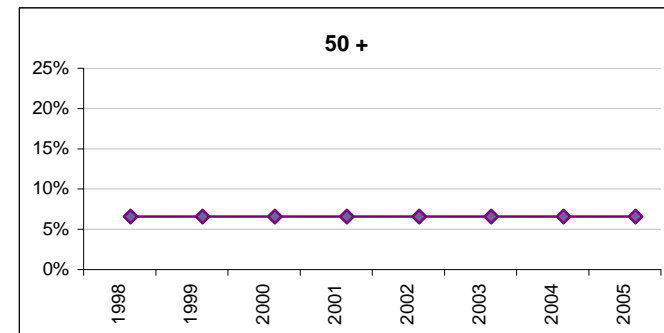
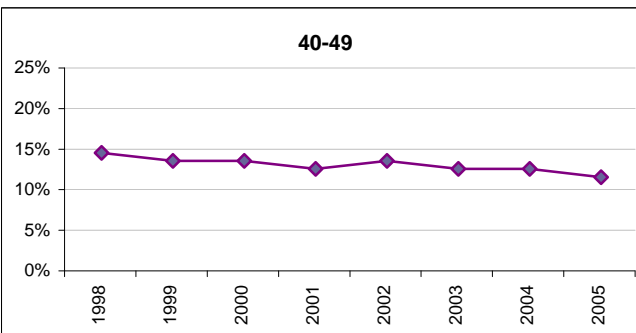
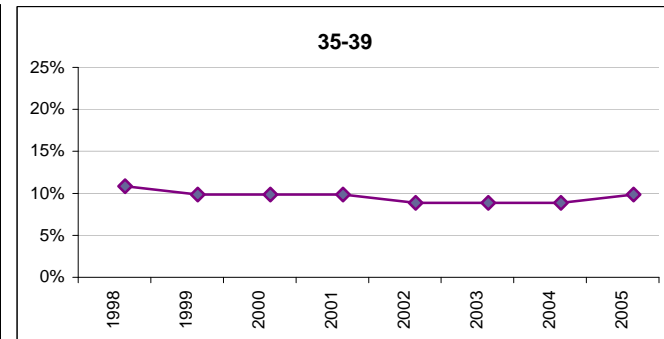
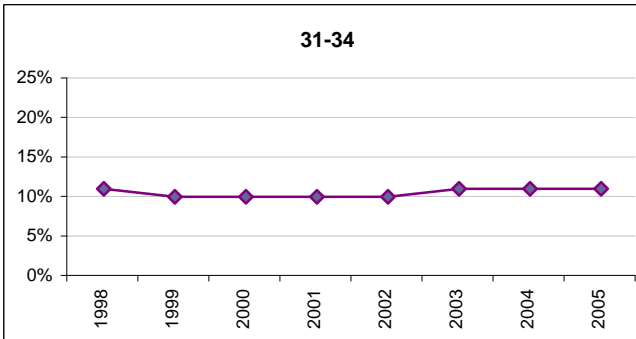
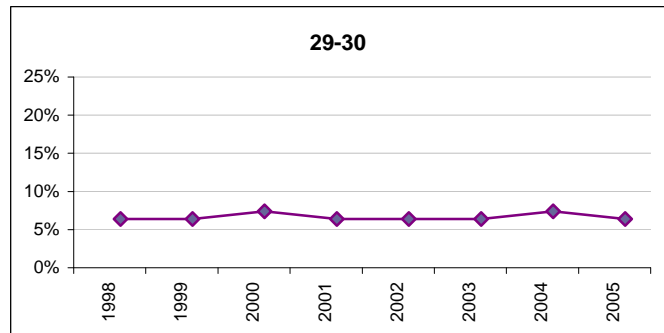
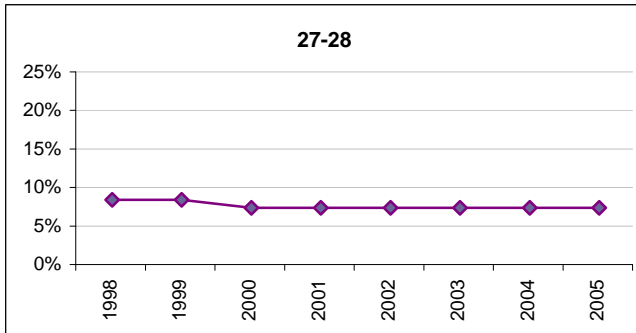


CONTINUED NEXT PAGE

ST. PHILIP'S COLLEGE AGE ENROLLMENT TREND

PERCENTAGE

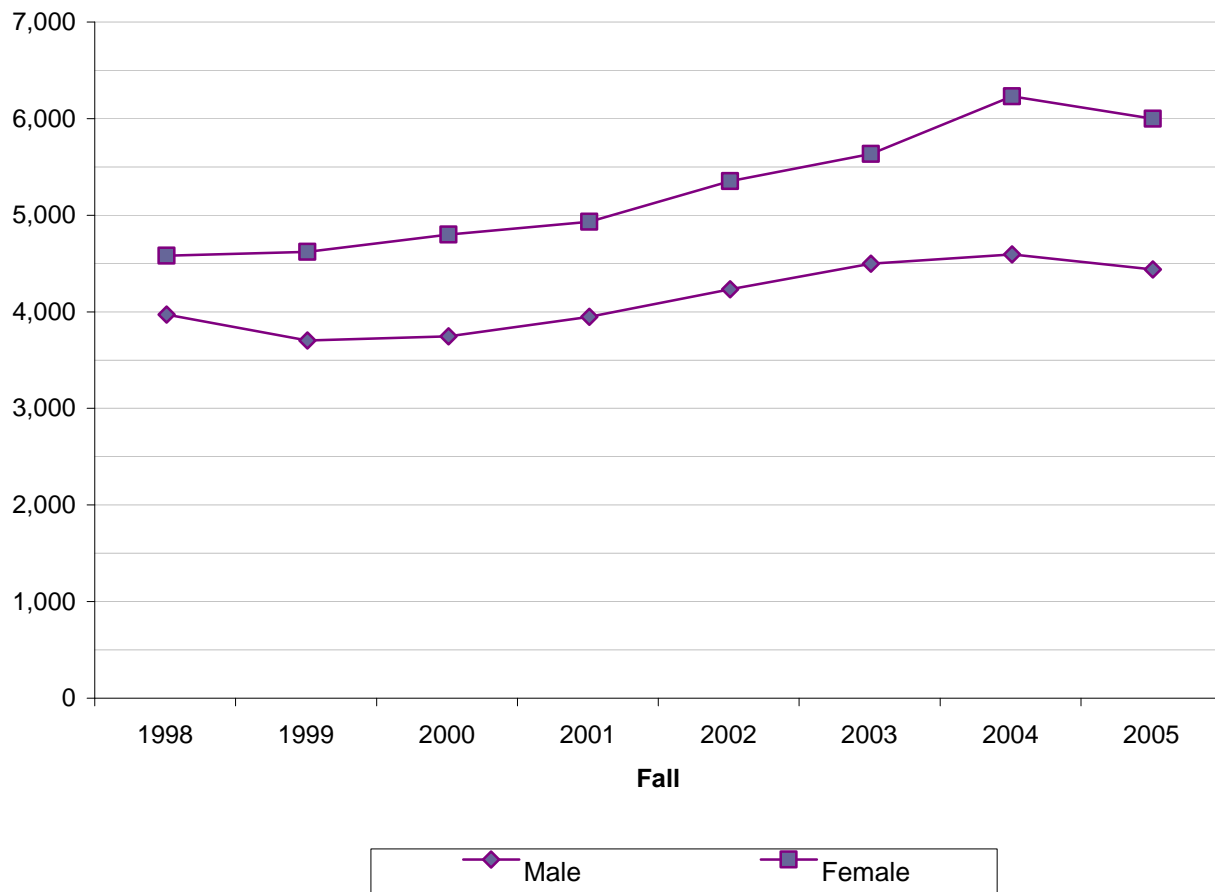
AGE	1998	1999	2000	2001	2002	2003	2004	2005
27-28	7%	7%	6%	6%	6%	6%	6%	6%
29-30	5%	5%	6%	5%	5%	5%	6%	5%
31-34	9%	8%	8%	8%	8%	9%	9%	9%
35-39	9%	8%	8%	8%	7%	7%	7%	8%
40-49	12%	11%	11%	10%	11%	10%	10%	9%
50 +	4%	4%	4%	4%	4%	4%	4%	4%



ST. PHILIP'S COLLEGE
GENDER ENROLLMENT TREND

TOTAL STUDENTS

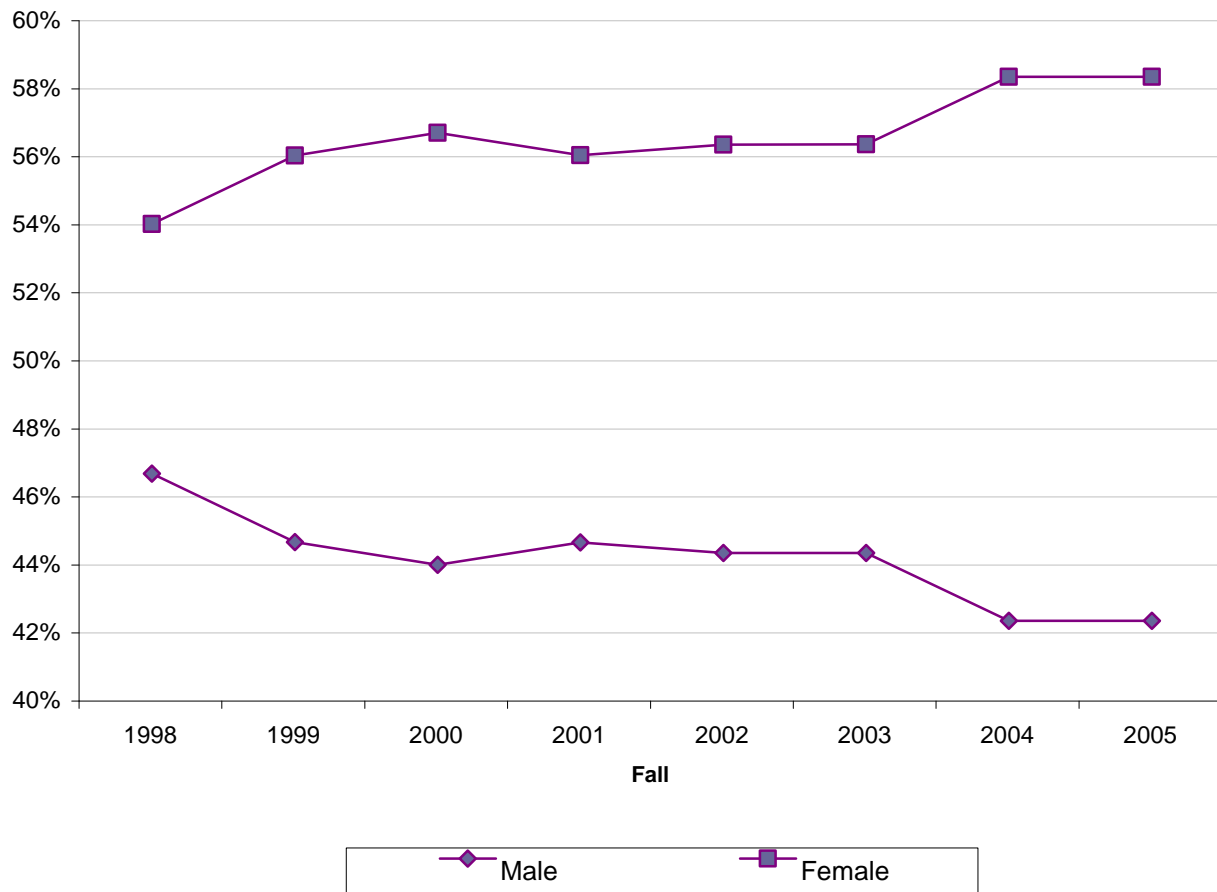
	1998	1999	2000	2001	2002	2003	2004	2005
Male	3,847	3,577	3,620	3,824	4,107	4,372	4,470	4,312
Female	4,456	4,495	4,673	4,806	5,229	5,508	6,105	5,875



ST. PHILIP'S COLLEGE GENDER ENROLLMENT TREND

PERCENTAGE

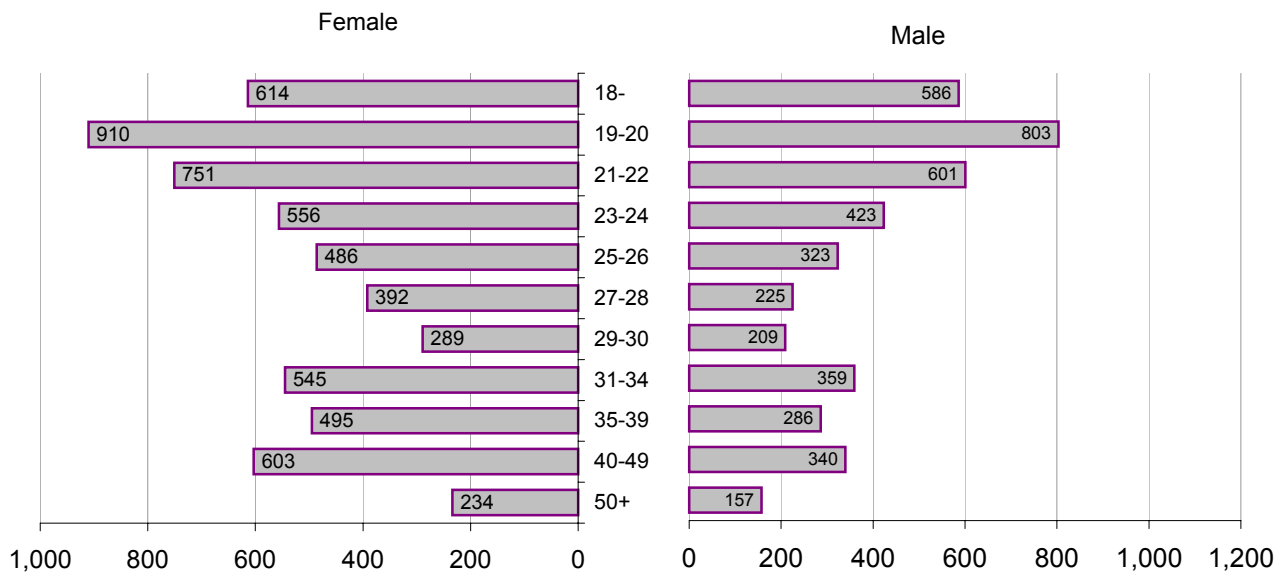
	1998	1999	2000	2001	2002	2003	2004	2005
Male	46.3%	44.3%	43.7%	44.3%	44.0%	44.0%	42.0%	42.0%
Female	53.7%	55.7%	56.3%	55.7%	56.0%	56.0%	58.0%	58.0%



ST. PHILIP'S COLLEGE AGE & GENDER ENROLLMENT

TOTAL STUDENTS FALL 2005

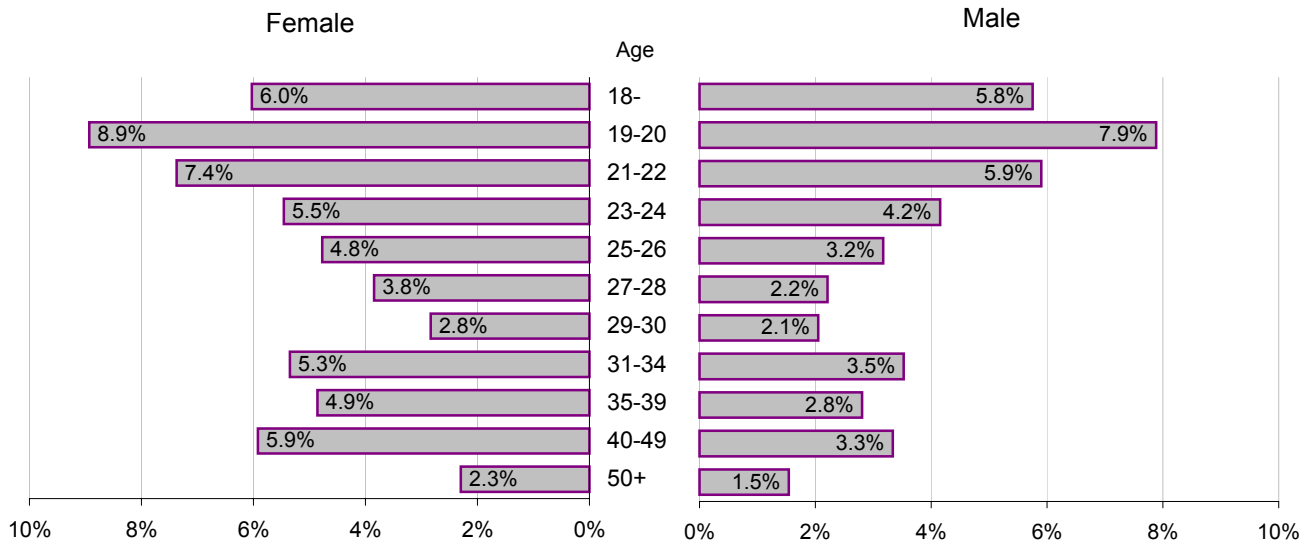
Age	Gender		Total
	Female	Male	
18 or less	614	586	1,200
19-20	910	803	1,713
21-22	751	601	1,352
23-24	556	423	979
25-26	486	323	809
27-28	392	225	617
29-30	289	209	498
31-34	545	359	904
35-39	495	286	781
40-49	603	340	943
50+	234	157	391



ST. PHILIP'S COLLEGE AGE & GENDER ENROLLMENT

PERCENTAGE FALL 2005

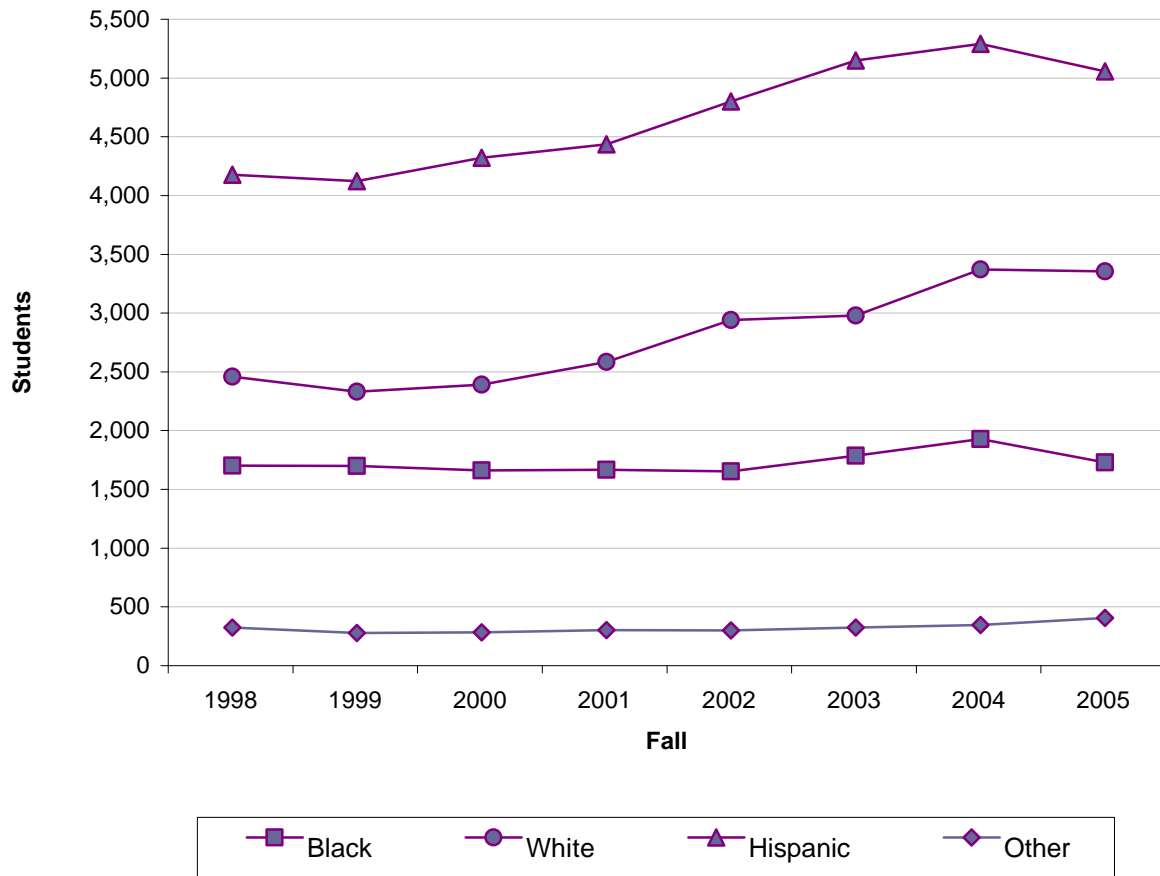
Age	Gender		Total
	Female	Male	
18-	6.0%	5.8%	11.8%
19-20	8.9%	7.9%	16.8%
21-22	7.4%	5.9%	13.3%
23-24	5.5%	4.2%	9.6%
25-26	4.8%	3.2%	7.9%
27-28	3.8%	2.2%	6.1%
29-30	2.8%	2.1%	4.9%
31-34	5.3%	3.5%	8.9%
35-39	4.9%	2.8%	7.7%
40-49	5.9%	3.3%	9.3%
50+	2.3%	1.5%	3.8%



ST. PHILIP'S COLLEGE ETHNICITY ENROLLMENT TREND

TOTAL STUDENTS

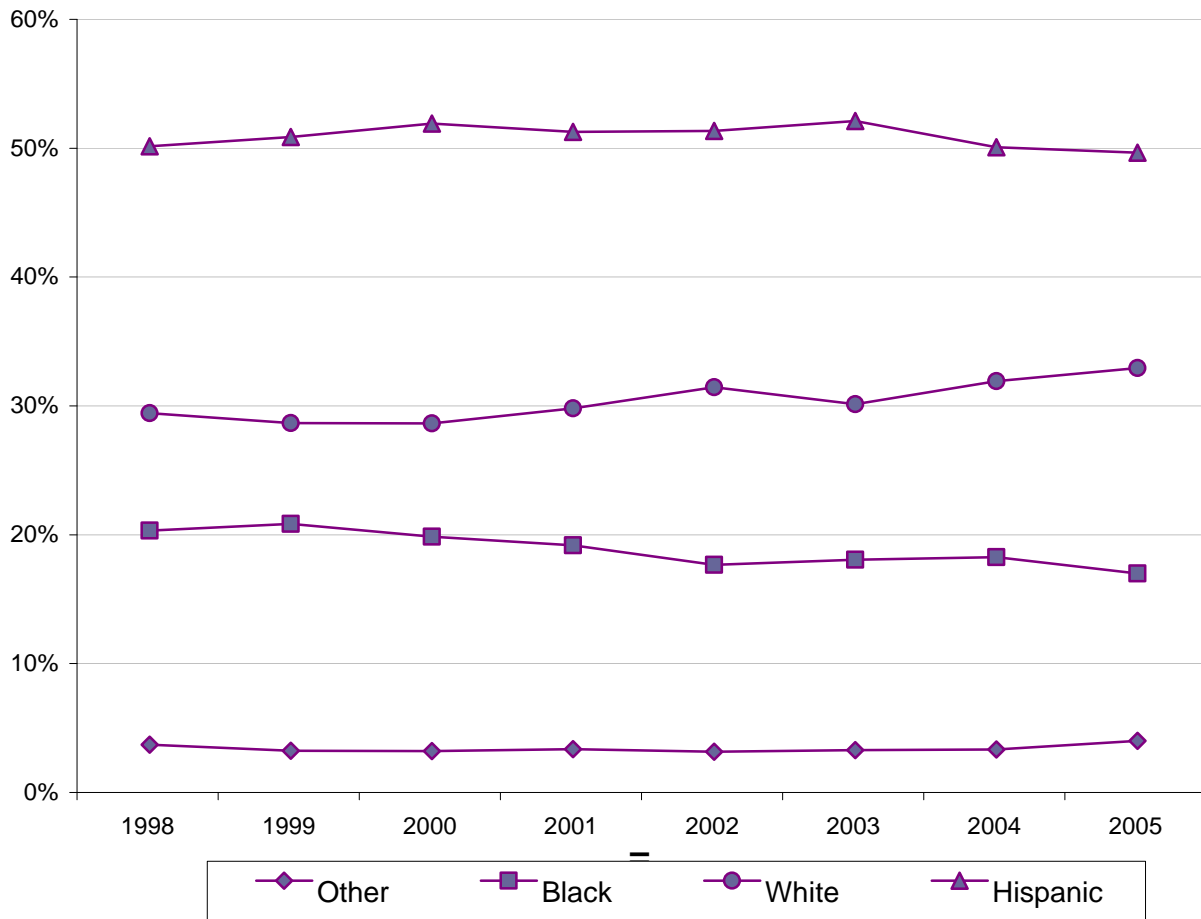
	1998	1999	2000	2001	2002	2003	2004	2005
Black	1,613	1,610	1,571	1,577	1,564	1,696	1,837	1,640
White	2,369	2,241	2,300	2,495	2,852	2,889	3,280	3,264
Hispanic	4,088	4,033	4,230	4,346	4,710	5,060	5,201	4,967
Other	233	188	192	212	210	235	257	316



ST. PHILIP'S COLLEGE ETHNICITY ENROLLMENT TREND

PERCENTAGE

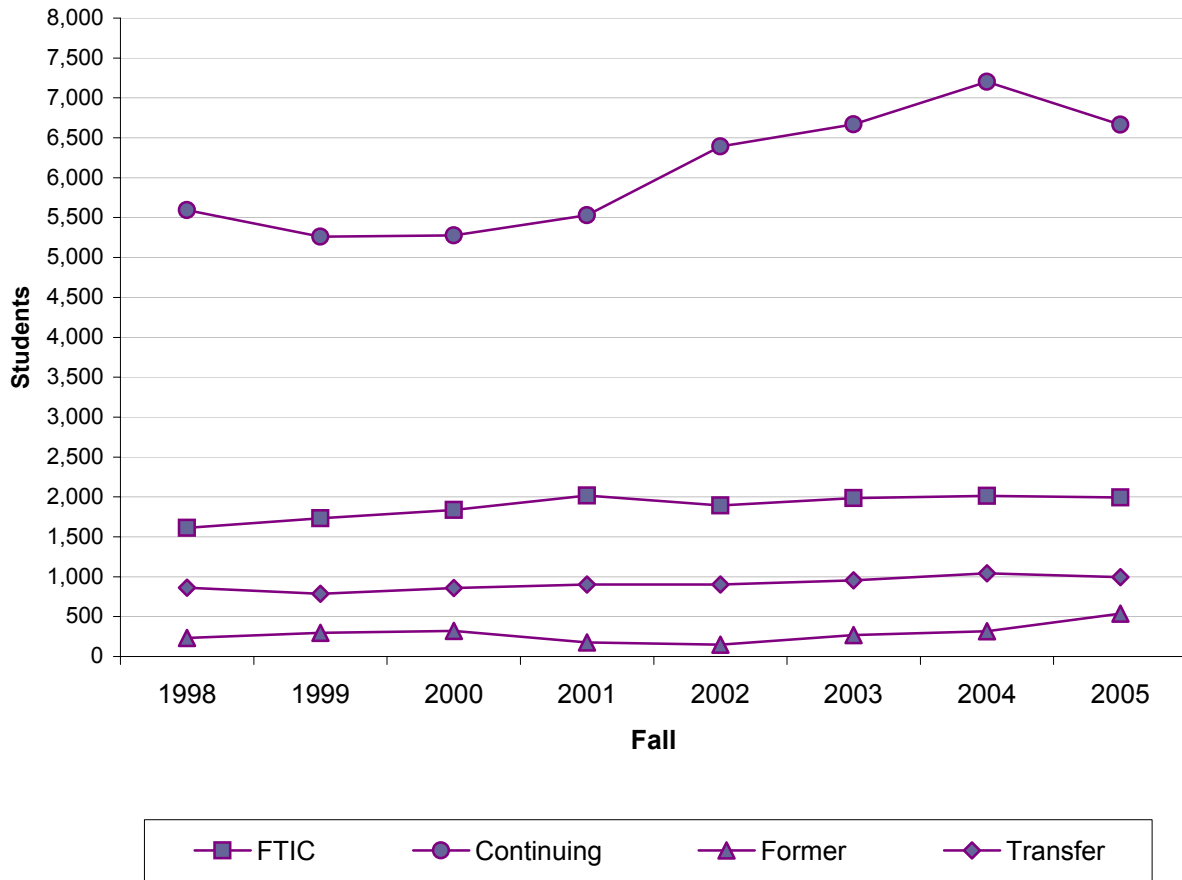
	1998	1999	2000	2001	2002	2003	2004	2005
Black	19.4%	19.9%	18.9%	18.3%	16.8%	17.2%	17.4%	16.1%
White	28.5%	27.8%	27.7%	28.9%	30.5%	29.2%	31.0%	32.0%
Hispanic	49.2%	50.0%	51.0%	50.4%	50.4%	51.2%	49.2%	48.8%
Other	2.8%	2.3%	2.3%	2.5%	2.2%	2.4%	2.4%	3.1%



ST. PHILIP'S COLLEGE FTIC ENROLLMENT TREND

TOTAL STUDENTS

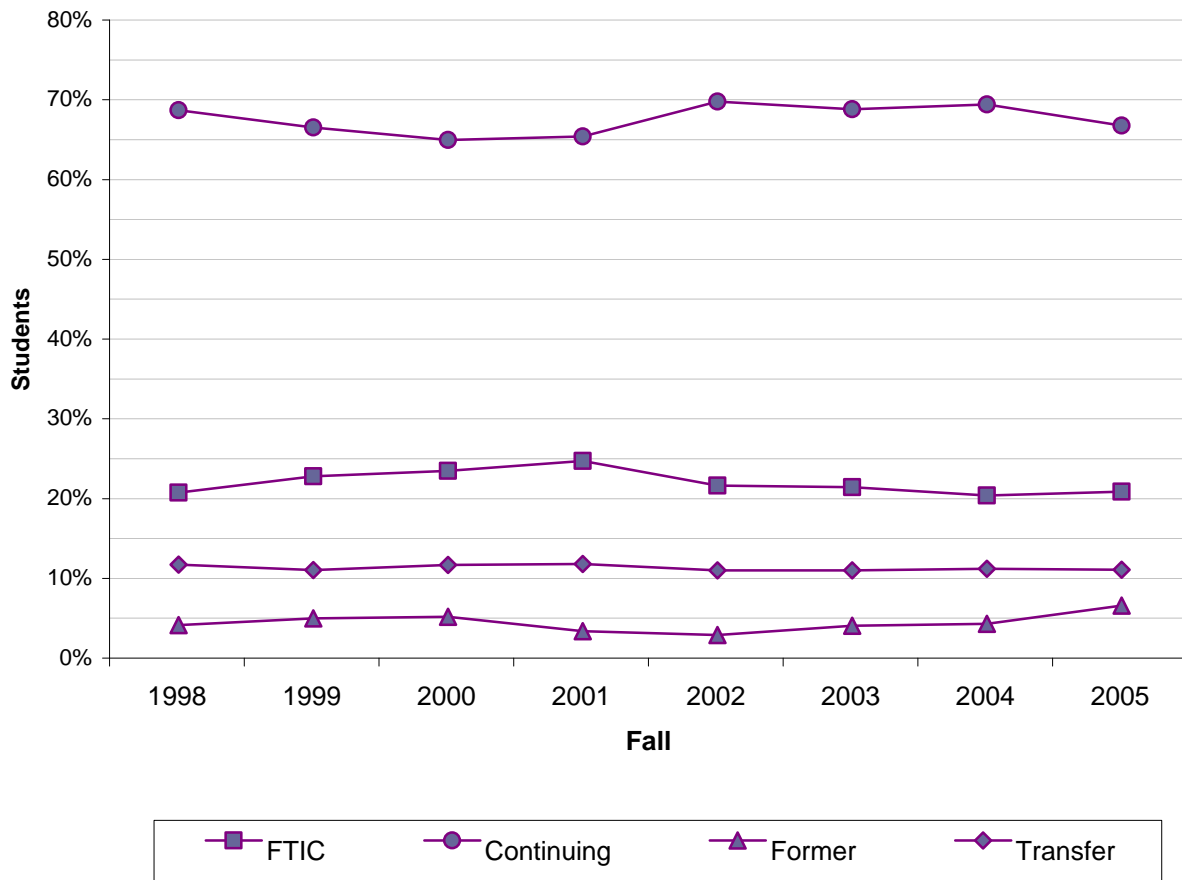
	1998	1999	2000	2001	2002	2003	2004	2005
FTIC	1,612	1,731	1,836	2,018	1,894	1,986	2,015	1,992
Continuing	5,593	5,261	5,278	5,530	6,391	6,669	7,201	6,665
Former	234	295	320	178	147	269	315	536
Transfer	864	785	859	904	904	956	1,044	994



ST. PHILIP'S COLLEGE FTIC ENROLLMENT TREND

PERCENTAGE

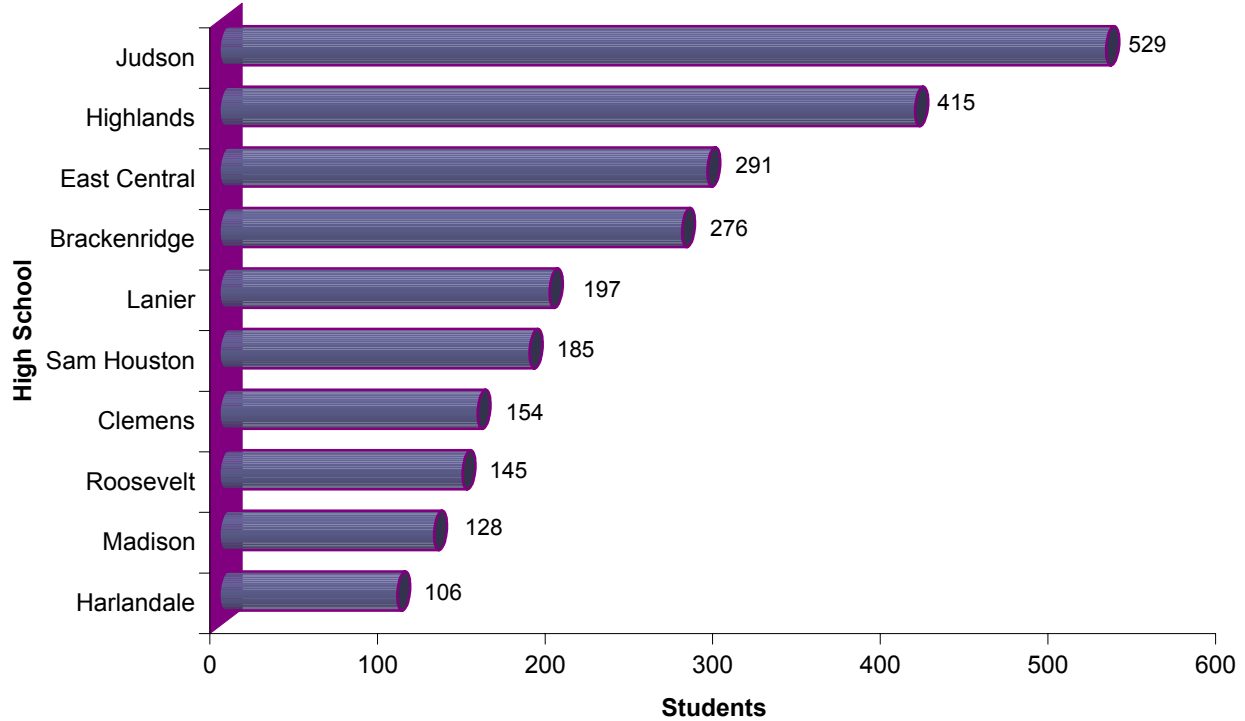
	1998	1999	2000	2001	2002	2003	2004	2005
FTIC	19.4%	21.4%	22.1%	23.4%	20.3%	20.1%	19.1%	19.6%
Continuing	67.4%	65.2%	63.6%	64.1%	68.5%	67.5%	68.1%	65.4%
Former	2.8%	3.7%	3.9%	2.1%	1.6%	2.7%	3.0%	5.3%
Transfer	10.4%	9.7%	10.4%	10.5%	9.7%	9.7%	9.9%	9.8%



ST. PHILIP'S COLLEGE TOP TEN FEEDER HIGH SCHOOLS ENROLLMENT TREND

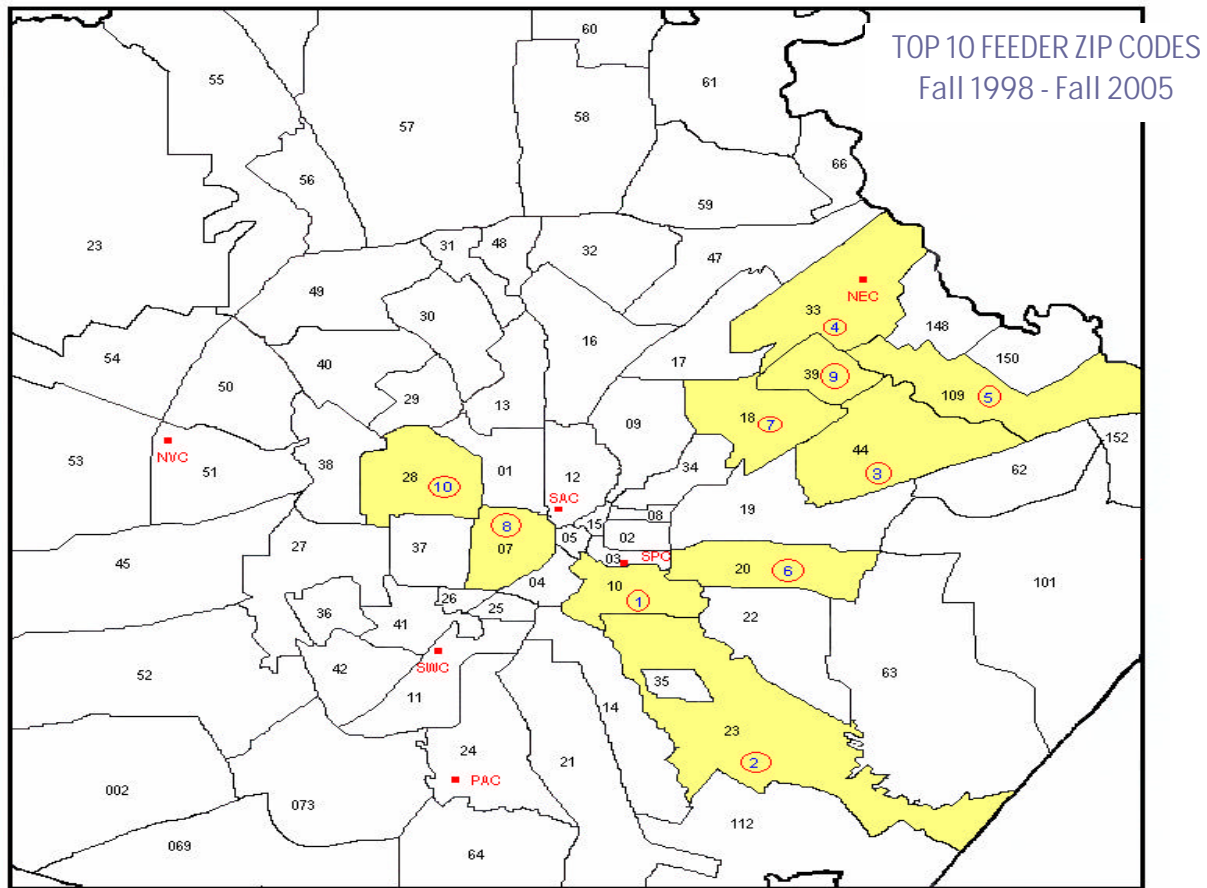
1998		1999		2000		2001		2002		2003		2004		2005	
Highlands	59	Highlands	50	Judson	68	Highlands	49	Judson	54	Judson	85	Judson	109	Judson	67
Judson	57	Judson	49	Highlands	58	Lanier	47	Brackendrige	46	Highlands	54	Highlands	62	Highlands	56
East Central	26	East Central	41	Brackendrige	48	Judson	40	Lanier	30	East Central	42	East Central	51	East Central	35
Harlandale	26	Brackendrige	39	East Central	35	East Central	37	Madison	23	Roosevelt	38	Roosevelt	39	Clemens	33
Brackendrige	25	Sam Houston	31	Sam Houston	26	Brackendrige	34	Highlands	27	Brackendrige	33	Sam Houston	34	Southwest	32
Sam Houston	24	Jefferson	28	Burbank	24	Madison	27	Roosevelt	27	Lanier	30	Lanier	31	Roosevelt	26
Holmes	20	Harlandale	21	Clemens	24	Clemens	26	East Central	24	Sam Houston	27	Madison	30	Burbank	25
Marsall	20	Kennedy	15	Lanier	22	Sam Houston	26	Clemens	23	Madison	26	Brackendrige	28	Lanier	24
Jay	18	McCollum	15	Jefferson	21	Fox Tech	24	Burbank	20	Clemens	24	Clemens	24	Brackendrige	23
Madison	17	Holmes	13	South San	21	Harlandale	15	Fox Tech	17	Harlandale	21	Fox Tech	23	Memorial	20
								Sam Houston	17	Southside	21	Harlandale	23		

TOP 10 FEEDER HIGH SCHOOLS Fall 1998 - Fall 2005



ST. PHILIP'S COLLEGE TOP TEN FEEDER ZIP CODE ENROLLMENT TREND

1998		1999		2000		2001		2002		2003		2004		2005	
78210	469	78210	480	78210	472	78210	475	78210	501	78210	506	78223	479	78210	466
78223	427	78223	414	78223	408	78223	414	78223	442	78223	447	78210	470	78244	413
78233	314	78233	300	78109	330	78109	344	78244	396	78244	416	78244	455	78223	403
78109	304	78228	283	78244	317	78244	343	78233	382	78233	385	78233	391	78233	367
78220	278	78220	279	78233	307	78207	335	78109	374	78109	360	78109	381	78109	357
78244	275	78244	272	78239	263	78233	332	78207	331	78207	354	78220	354	78220	293
78228	273	78109	271	78220	255	78239	287	78239	300	78220	313	78218	316	78218	288
78250	271	78218	240	78228	236	78220	260	78218	283	78218	288	78207	306	78247	274
78218	250	78207	235	78207	230	78218	255	78220	279	78247	261	78217	287	78239	272
78239	244	78239	235	78218	227	78217	240	78217	258	78239	258	78228	279	78207	269
												78247	279		



ST. PHILIP'S COLLEGE RETENTION TREND

PERCENTAGE

	1998	1999	2000	2001	2002	2003	2004	2005
Within Semester	92%	91%	90%	91%	93%	93%	92%	93%
Fall to Spring	63%	65%	64%	63%	67%	68%	67%	65%
Fall to Fall	40%	40%	40%	38%	42%	41%	43%	42%



DEFINITIONS

FTIC Student: Student entering college for the first time with high school diploma or GED.

Continuing Student*: Student that has been enrolled at St. Philip's College within one year.

Former Student: Student that has not been enrolled at St. Philip's College for more than one year.

Transfer Student: College student attending St. Philip's College for the first time.

*Includes some dual-credit students