

Student Success Newsletter

St. Philip's College, 1801 Martin Luther King Dr., San Antonio, TX 78203
St. Philip's College - Southwest Campus, 800 Quintana Rd., San Antonio, TX 78211

Student Success Leadership Team



Dr. Mordecai Brownlee
Vice President for Student Success



Dr. Paul Machen, II
Dean for Student Success



Christina Cortez
Dean for Student Success

Editors: Rosalinda Rivas, Eitandria Tello

Quality Enhancement Plan – Ethical Decision-Making

St. Philip's College is accredited by the Southern Association of Colleges and Schools Commission on Colleges (SACSCOC). Part of this process is the QEP (Quality Enhancement Plan) to promote student success. Our QEP topic is Ethical Decision-Making.

QEP Focus: Ethical decision-making is the ability to connect values and choices to actions and consequences.

QEP Goal: Students engage in specific measurable academic activities to enhance their ethical decision-making skills.

Ethical Decision-Making Process:

- *Stop and think to determine the facts.
- *Identify the options.
- *Consider consequences for yourself and others.
- *Make an ethical choice and take appropriate action.



Dr. Mordecai Brownlee, Vice President for Student Success, invited St. Philip's College's SGA President to address students this month. Here is Ally's greeting.

MESSAGE FROM THE SGA PRESIDENT:

Hello Tigers –

During this difficult time, please know that you are not alone. Our Tiger Nation remains strong! The Student Government Association is here to represent your voice and enhance your college experience. Interested in being an officer? Contact us at spc-sga@alamo.edu.

Please be safe, be encouraged, finish the semester strong, and don't give up. We are in this together!

Alexandra "Ally" Carman
President, SPC Student Government Association
acarman@student.alamo.edu

Student Success in the SLC – MLK Campus

For more information, contact Charleen Brammer at 210-486-2468 or 210-486-2275.

SLC 102 Point of Contact

SPC Safe SPACE Advocacy Center	Sasha Wilhelm
Counseling Services	Sasha Wilhelm
Social Services Assistance	Sasha Wilhelm
Disability Services	Maria Botello
Service Learning/Financial Literacy	Elizabeth Castillo
Student Conduct/Title IX Programs	John Martin

SLC 127 Point of Contact

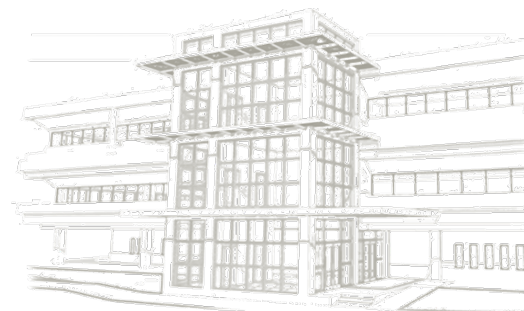
SPC Health Center	Elijah Casillas
-------------------	-----------------

Spring 2020 Hours of Operation (Remote Access only):

Monday, Tuesday, Thursday, Friday	8:00 am – 5:00 pm
Wednesday	8:00 am – 7:00 pm
First Saturday of the Month	9:00 am – 1:00 pm

Important Dates

May	2020 Census, US Census Bureau -- Submit your Census online – See link on page 6)
May 11-16	Final Examinations – See your college catalog for schedule
May 16	End of Spring Semester
May 18	Maymester begins (first day of classes)
May 19	Census Date (Maymester)



Student Emergency Aid (CARES Act)

For more information contact the SPC Financial Aid office at 210-212-5266, or toll free at 1-844-202-5266.

In response to the COVID-19 pandemic, Alamo Colleges District has established Student Emergency Aid to provide emergency resources for students who need temporary assistance. The Alamo Colleges District and its family of colleges (Northeast Lakeview College, Northwest Vista College, Palo Alto College, San Antonio College and St. Philip's College) remain focused on student success and access, by putting students first, promoting safety, and empowering the community.

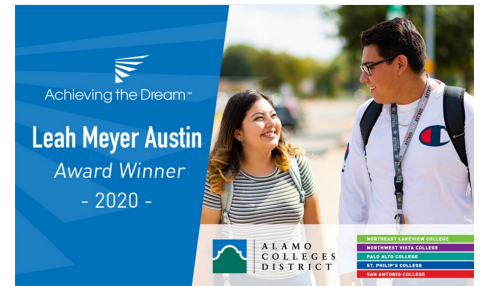
The Student Emergency Aid program provides for financial relief for students from several different funding sources such as the federal CARES Act Emergency Aid, the Alamo Colleges Foundation's COVID-19 Student Impact Fund, and the colleges' Advocacy Centers (or <https://www.alamo.edu/experience-the-alamo-colleges/current-students/student-opportunities/advocacy-centers/>).

The Higher Education Emergency Relief Grants under the CARES Act are based on student expenses related to the disruption of campus operations due to COVID-19, and the funding is not tied to existing financial aid programs such as Pell Grants. All funds are distributed directly to students. In order to be considered for CARES act aid, a student must complete and submit a 2019-2020 FAFSA (if one is not already on file).

The 2020 [Leah Meyer Austin Award](#) from Achieving the Dream:

Eligible students will be able to make up for lost wages:

- Buy groceries
- Pay rent or utility bills
- Pay child care expenses
- Access technology that supports remote learning
- Pay health care expenses



****Who can apply for CARES Act Emergency aid:** Students must first meet either of these categories: (1) Students who are or were enrolled in Spring 2020; or (2) Students who were enrolled Fall 2019 PLUS are enrolled in either Maymester 2020, Summer 1 2020, or Summer II 2020. **Other important eligibility requirements** are found on Alamo's website <https://www.alamo.edu/studentemergencyaid/>.

****Note:** Actual eligibility will be based on the above requirements (and those listed on the website) AND answers to the Emergency Assistance Application. The award amount will depend on the number of applicants, availability of funds, and need demonstrated in the application.

Beginning **Friday, May 1, 2020**, students can complete an online application via [ACES](#) showing their needs in order to be considered for CARES Act Emergency aid funding. **Students will need to:**

1. Log into the [ACES](#) portal using your Username and Password
2. Select the **Student** option from the sidebar menu
3. Select the **Financial Aid** tab
4. Click on **CARES Act Emergency Assistance Application** from the list of options
 - This will open a DocuSign page
 - Enter your **Name** and **Email** in the required fields, and click **Begin Signing**
 - This initiates an email to be sent to the address you entered, which will contain the link to the application

NATIONAL FOSTER CARE DAY

Tuesday, May 5, 2020

This day is dedicated to all in the U.S. foster care system. National Foster Care Day is observed on the first Tuesday in May and encourages everyone to year blue and raise their voices to show their support for foster youth everywhere.



AlamoCARES

For more information, contact Dr. Mordecai Brownlee, Vice President of Student Success at 210-486-2252.

St. Philip's College is committed to providing a supportive learning environment and to fostering safe, healthy relationships among our students. In this effort, Alamo Colleges District initiated AlamoCARES, a prevention, education and support program regarding dating violence, domestic violence, sexual assault and stalking. It is our sincere hope that AlamoCARES will empower you to make well-informed decisions about life issues that affect your college years and beyond.

Within the AlamoCARES site, you will find information on rights granted by **Title IX** and resources to help educate and assist you when dealing with harassment and sexual violence. Coming soon are events, training and opportunities to bring awareness when dealing with difficult issues and creating discussion opportunities with students. Visit us at <http://alamo.edu/spc/alamocares/> for more information.

The Alamo Colleges District encourage individuals to bring forward information/complaints about sexual harassment and sexual violence. **Retaliation** against any **individual who reports or participates** in the investigation of alleged violations is **strictly forbidden** and will be **enforced** by the College administration.

If you believe you have experienced **Sexual Misconduct** you may consider the following options:

- Contact **Campus Police** at 210-485-0099 (non-emergency) or 210-485-0911 (emergency)
- Seek **medical attention** at a hospital or with a physician
- **Report the incident** at www.alamo.edu/TitleIXCoordinator/ (call John Martin 210-486-2746)
- **Contact SPC Counseling Services** at 210-486-2333 (for confidential counseling and or referrals)
- Contact **parents, relatives or close friends** for support

H.1.1 Equal Education and Employment Opportunities (Policy) www.alamo.edu/district/policies/
AlamoCARES has additional **Title IX** information and resources at: www.alamo.edu/spc/AlamoCARES

ATTENTION STUDENTS!

All entering freshmen, former and transfer students are now required to complete "**Sexual Assault Prevention for Community Colleges**". Sexual Assault Prevention for Community Colleges is an online survey and course addressing critical life skills. The training is our way of informing St. Philip's College students about **Title IX** standards, reporting violations and resources available. **All entering freshmen, former and transfer students are required to complete the training before the end of their first semester of classes at St. Philip's College (to avoid a registration hold being placed on their account).**

To access the Sexual Assault Prevention for Community Colleges training:

1. Always sign in through ACES at <https://alamoaces.alamo.edu>.
2. Look for the AlamoCARES box on the Student tab and read the important message before accessing the course. Note: an alternative training is available; see your Vice President for Student Success for assistance.
3. Click on the link provided, and complete the confidential pre-survey at the start of the course. The Alamo Colleges District does not receive a copy of your responses.
4. The quiz at the end of the course is required to document your completion, but the score is not recorded and will not impact you in any way. Completion is documented on your student record.

You Have the Right to Feel Safe.

Academic and Career Advising Services (MLK and SW Campus)

For more information contact Arianna Lay at 210-486-2381.

The campus remains closed due to coronavirus, but teaching, learning, and staff support are provided remotely. Visit the [COVID-19 Update Page](#) or key in <https://coronavirus/www.alamo.edu/> to see the latest developments. Updates are posted as soon as they become available.

Schedule your advising appointment today and ask us about Summer Momentum! Virtual walk-in Advising services are offered Wednesdays from 5:00 pm – 7:00 pm via Zoom. Access our virtual walk-ins on this link: <https://alamo.zoom.us/j/129797519>. Download the application on your smartphone or computer for instant access (no account required), simply type in the Meeting ID: 129797519.

No device or computer, no problem! Call 1-346-248-7799 or 1-312-626-6799 and join with Meeting ID: 129797519.

Free Wi-fi in our Parking Lots! Each of our five colleges will have a designated area in their parking lots where free wi-fi will be provided for students. Directional signage will guide students to the locations. For more information and resources click on the [Remote Learning FAQ](#) or visit <https://www.alamo.edu/siteassets/district/news/special-news/covid19/student-faq-remote-learning.pdf>, and <https://www.alamo.edu/academics/academic-resources/academic-calendar/summer-2020-registrationpayment-calendar/>.

Zoom Advising Instructions in Navigate:

- Log in to your [ACES](#) Account
- Click on the "Start Here" tab
- Select the "Alamo NAVIGATE" icon
- Click "Login"
- Select the "Appointments" tab
- Select "Schedule an Appointment"
- Select the Reason for your appointment and hit Next
- Select the Location and hit Next
- Select the Day and Time that works for you and hit Next
- Enter "Zoom Appointment" in the Notes box
- Review the selection and confirm your appointment

For more information visit

<https://www.alamo.edu/spc/academics/academic-resources/academic-advising/>.

Hours of Operation:

Monday, Tuesday, Thursday	8:00 am – 5:00 pm
Wednesday	8:00 am – 7:00 pm
Friday	1:00 pm – 5:00 pm
1 st Saturday of the month	9:00 am – 1:00 pm


Technical Support

Email: spc-helpdesk@alamo.edu

Phone: 210-486-2777 (Choose **option 1** for technical support)

Steps to identify who your Advisor is:

1. Log into ACES
2. Click on the **My Page** tab (4th tab from the left)
3. Under **Academic Profile** (on the left) select the **current term** and press **Go**
4. Your advisor's name will appear under "Advisors"
5. Visit your advisor

 ALAMO COLLEGES AlamoINSTITUTES An organization of six career pathways designed for students who have key interests, such as, but not limited to the following areas:	
Creative & Communication Arts Institute	<i>The Arts, Audio/Video Technology and Communications*</i>
Business & Entrepreneurship Institute	<i>Business Management & Administration, Finance, Hospitality & Tourism, and Marketing*</i>
Health & Biosciences Institute	<i>Health Sciences*</i>
Advanced Manufacturing & Logistics Institute	<i>Architecture, Construction, Manufacturing, Transportation, Distribution & Logistics*</i>
Public Service Institute	<i>Education, Training, Government, Public Administration, Human Services, Law, Public Safety, Correction and Security*</i>
Science & Technology Institute	<i>Agriculture, Food & National Resources, Information Technology, Science, Technology, Engineering and Mathematics*</i>

Academic and Career Advising Services (continued)

For more information contact Arianna Lay at 210-486-2381.

New Student Orientation (NSO):

New Student Orientation is reserved for students currently enrolling for the Summer 2020 Semester. To view Checklist, online Registration Form, NSO handout, reschedule NSO, and Military Joint Base San Antonio (JBSA) sessions, visit <https://www.alamo.edu/spc/academics/academic-resources/academic-advising/new-student-orientation/>.

Questions, concerns or comments may be directed to the JBSA Advising staff:

Fort Sam Students

Allison Joubert
210-486-2004

Randolph Students

Cynthia Jaime
210-486-2901

Lackland Students

Javier Barron
210-486-2901

General Information

Sarai Duran
210-486-2001
dst-military@alamo.edu

Graduation Information Update

For more information contact Enrollment Management at 210-486-2700.

<https://www.alamo.edu/spc/2020grads>



Career Services: We have the resources and network to help you explore and develop your career goals. Through self-assessment and career exploration, you will be able to ensure that the Alamo Institute you selected upon enrollment is a great fit for your career and educational needs. Learn more about our career related services at <https://www.alamo.edu/spc/experience-spc/current-students/career-services/> or contact Advising Lead Gilbert Palomo via email (spc-jobs@alamo.edu), or at 210-486-2056.

SPC Academic and Career Advisors:

Institute 1: Creative & Communication Arts

Konnie Harper-Thompson
kharpert-hompson@alamo.edu

Institute 2: Business & Entrepreneurship

Yvonne Benton ybenton@alamo.edu
Yolanda Ward yward@alamo.edu
James Satchell jsatchell@alamo.edu
Joseph Hernandez jhernandez31@alamo.edu

Institute 3: Health & Biosciences

Frances Calderon fcalderon4@alamo.edu
Irma Lopez isanchez17@alamo.edu
Teresa Hopwood thopwood2@alamo.edu
Tricia McElligott tmcelligott@alamo.edu
Nathaniel Martinez nmartinez324@alamo.edu
Doug Gable dgable@alamo.edu
Jessica Perez jperez1494@alamo.edu
Juan Venegas jvenegas21@alamo.edu
Xaviera Toussaint xtoussaint@alamo.edu

Institute 4: Advanced Manufacturing & Logistics Automotive Technology (MLK Campus)

Yvonne Benton ybenton@alamo.edu
Christine Saucedo csauceda1@alamo.edu

Institute 4: Advanced Manufacturing & Logistics (Southwest Campus)

Blair Hannon bhannon@alamo.edu
Sarah Ramirez sramirez260@alamo.edu
Jennifer Salmeron jleal@alamo.edu
Carlos Solis csolis@alamo.edu

Institute 5: Public Service

Yvonne Benton ybenton@alamo.edu
Konnie Harper-Thompson kharpert-hompson@alamo.edu
Christine Saucedo csauceda1@alamo.edu

Institute 6: Science & Technology

Meredith Bess mbess@alamo.edu
Gloria Jose gjose@alamo.edu
Xaviera Toussaint xtoussaint@alamo.edu

2020 Census – U.S. Census Bureau

Fill out your census online, by phone or mailing in the form. Participating is your chance to help your county get its fair share of representation and funding. For more information and to fill out your census in Spanish call: 1-844-468-2020 (see <https://2020census.gov/> for other languages). Click the banner below or go to <https://www.sabexarcountmein.org/> to get counted now!



Alumni Affairs (MLK and SW Campus)

For more information contact Dr. Sharon Crockett-Ray at 210-486-2887.

If you are looking for a way to stay in touch with SPC, there is no better way than joining the Alumni and Friends Association. Membership information is at <https://www.alamo.edu/spc/alumni-affairs/>, or follow us on Facebook: <https://www.facebook.com/gospc>.

Bae-B-Safe (MLK and SW Campus)

For more information contact Tracy Watts at 210-486-2538.

BAE-B-SAFE works to support educational success and increase graduation rates by preventing unplanned pregnancies and preparing young people with life skills to protect their future. Empower and educate yourself about healthy sexual behaviors. (Must be 14-19 years of age to participate.) Call 210-486-2538, or email me at twatts8@alamo.edu.



Bookstore (MLK and SW Campus)

For more information contact Jorge Marines at 210-534-8024.

Contact us at 210-486-2440 or via email at stphilips@bkstr.com. Inquire about our textbook low price guarantee, discounts on technology, and much more. To view bookstore information, or search for textbook options, visit <https://www.bkstr.com/stphillipsstore>.



BOOKSTORE
St. Philip's
College

Business Office (MLK and SW Campus)

For more information contact Sofia Zavala at 210-486-2247.



Keep Learning Plan at St. Philip's College! See page 14. The Expanded Summer Momentum program can work for you. Eligible students can save time and money. We can answer questions about billing for the **new Expanded Summer Momentum program**, the **new Reduced Payment Plan**, or tuition discounts and waivers. Stay on track for a degree with the **new Clean Slate Plan**. Find out more at <https://www.alamo.edu/cleanslate>, and <https://www.alamo.edu/admission--aid/paying-for-college/tuition-and-fees/summer-momentum-plan/>. You may call Sofia Zavala (210-486-2247), email dst-vbo2@alamo.edu, or visit <https://www.alamo.edu/district/business-office/> to learn more. Please provide your name, telephone number, email address, and Banner ID when calling or emailing.

(Refer to page 15 to learn about the **new No Cost-Testing**, contact the **Testing Center** at 210-486-2444, or visit <https://www.alamo.edu/admission--aid/testing-centers/>.)

Child Development Center (MLK and SW Campus)

For more information contact Monica Guzman at 210-486-2501.

The campus remains closed due to coronavirus, but teaching, learning, and staff support are provided remotely. Please visit the [COVID-19 Update Page](https://coronavirus/www.alamo.edu/) or key in <https://coronavirus/www.alamo.edu/> to see the latest developments. Updates are posted as soon as they become available. For more information call us at 210-486-2500 or visit <https://www.alamo.edu/spc/child-dev-center/>.



Counseling Services (MLK and SW Campus)

For more information contact Sasha Wilhelm at 210-486-2827.

May is Mental Health Awareness month! We continue to provide counseling support via Zoom. Call us at 210-486-2333 to schedule an appointment (provide your name, telephone number, email address, and Banner ID when calling or emailing). Community residents needing resources or assistance due to COVID-19 may call **United Way of San**

Antonio and Bexar County's 2-1-1 Help Line. In case of an emergency call **The Center for Healthcare Services Crisis Hot Line** at 210-223-7233, or dial **9-1-1**.

College students talk to Counselors about many different types of issues like career concerns, anxiety, academic stress, relationships, stress associated with deportation/family legal status, trauma, coping with illness, and more. Counselors also provide referrals and community resources.

Make an appointment if you want to talk about strategies that can help you manage your stress, school and life activities. See important links on our website: <https://www.alamo.edu/spc/experience-spc/current-students/support-centers/counseling-services/>.

Substance Abuse and Mental
Health Services
Administration (SAMHSA)

1-800-662-4357

TTY: 1-800-487-4889

Treatment referral and info 24/7

www.samhsa.gov/find-help/national-helpline

Do you think you are the only one who is worried about your housing situation? About 50% of students who live off-campus experience poverty and many of them lack adequate housing. **You are not alone.**

Contact [Counseling Services](#), so we can share local resources with you.

Counseling Services (continued)

For more information contact Sasha Wilhelm at 210-486-2827.

DACA Allies: Find resources for scholarships and legal assistance for Deferred Action for Childhood Arrivals (DACA) at <https://www.alamo.edu/spc/admissions/specific-populations/daca/>, or speak confidentially to District Coordinator Carmen de Luna-Jones (210-485-2080), SPC Director Elizabeth Castillo (210-486-2473), or SPC Counselor Rosalinda Rivas (210-486-2117).

Resources: • National Domestic Violence Hotline Staying Safe During COVID-19: 1-800-799-7233, and TTY 1-800-787-3224 • The National Network to Eliminate Domestic Violence, Resources on the Response to the Coronavirus (COVID-19): <https://nnedv.org/get-help/> • Department of Justice, Office of Women's Health: <https://www.justice.gov/ovw/local-resources> • Prevent Child Abuse America, Coronavirus Resources & Tips for Parents, Children & Others: <https://preventchildabuse.org/coronavirus-resources/> • CDC, Preventing Intimate Partner Violence: 1-800-CDC-INFO (232-4636), and <https://www.cdc.gov/violenceprevention/intimatepartnerviolence/fastfact.html> • Stronghearts Native Helpline: 1-844-762-8483, or visit <https://www.strongheartshelpline.org/> • Informed Immigrants, Resources for immigrants during the Coronavirus crisis: <https://www.informedimmigrant.com/guides/coronavirus/>

The SPC Safe SPACE Student Success & Advocacy Center (MLK and SW Campus)

For more information contact Sasha Wilhelm at 210-486-2827.

The campus remains closed due to COVID-19, but teaching, learning, and staff support are provided remotely. Please visit the [COVID-19 Update Page](https://coronavirus/www.alamo.edu/) or key in <https://coronavirus/www.alamo.edu/> to see the latest developments. Updates are posted as soon as they become available.

Helping Students Succeed at SPC: The SPC Safe SPACE Student Success & Advocacy Center provides resources for food and social services assistance, and possible access to a one-time emergency aid program through Trellis.

Two Important New Services – Student Emergency Aid (CARES Act), and Alamo Colleges Helpline (210-486-1111):

Student Emergency Aid (CARES Act): [Read more on page 2](#) about the Student Emergency Aid grant now administered through our Student Financial Services (financial aid) office. Follow this link <https://www.alamo.edu/studentemergencyaid/> for eligibility requirements and instructions for accessing the application in ACES. For more information, contact our **SPC Financial Aid office at 210-212-5266, or toll free at 1-844-202-5266**, or via email dst-sfs@alamo.edu. The FA website is at <https://www.alamo.edu/spc/admissions/pay-for-college/financial-aid/>. The financial aid office is ready to assist you – call or apply today!

Alamo Colleges Helpline: The helpline is available 8 am-7 pm, Monday-Thursday, and Friday 8 am-5 pm.



City of San Antonio COVID-19 Emergency Housing Assistance Program

San Antonio residents can find more information on the program by calling 210-207-5910, or apply online now at <https://www.sanantonio.gov/NHSD/Programs/FairHousing>. Residents must meet eligibility requirements.

The program can help with:

- Rent or mortgage payments
- Electricity and water bills
- Internet and phone bills
- Groceries, Medicine, Fuel

The SPC Safe **SPACE** Student Success & Advocacy Center (continued)

For more information contact Sasha Wilhelm at 210-486-2827.

The San Antonio Food Bank website is <https://safoodbank.org/cvresponse/>. Let us know how we can help. For more information contact Sasha Wilhelm via email at awilhelm3@alamo.edu (or at 210-486-2827). Please provide your name, telephone number, email address, and Banner ID when calling or emailing.

Disability Services (MLK and SW Campus)

For more information contact Maria Botello at 210-486-2199.



Disability Services ensures reasonable academic support to qualifying students with disabilities. We want to make sure you get the support you need to complete your courses successfully. To get support with disability services (Establishing or Renewing Services, TSI Testing, Academic Advising, Course Accommodations, or Assistance with online adaptive resources) please contact us at spc-dss@alamo.edu or call (210) 486-2199. Please provide your name, telephone number, email address, and Banner ID when calling or emailing.

For more information and access to the online registration system, visit <https://www.alamo.edu/spc/experience-spc/current-students/support-centers/disability-services/>.

Good Samaritan Veteran's Outreach & Transition Center (Off-Site)

For more information contact us at spc-gsvotc@alamo.edu or at 210-486-2185.

The college remains closed due to coronavirus, but teaching, learning, and staff support are provided remotely. Please visit the [COVID-19 Update Page](#) or key in <https://coronavirus/www.alamo.edu/> to see the latest developments. Updates are posted as soon as they become available.

We provide free services to active duty service members, veterans, their families and the community. This includes remote referral services, job training, financial counseling, health and wellness, business start-up, academic advisement, and no cost legal services by a licensed attorney. Call us Monday-Friday (8 am - 5 pm). To learn more visit <https://www.alamo.edu/spc/about-spc/college-offices/gsvotc/>.



The Selective Service System reminds all men to register upon their 18th birthdays.

This is the law. Register while you are applying for federal student aid (check "Register Me" on FAFSA). You may be denied benefits or a job if you have not registered. Late registrations are accepted until a man's 26th birthday. A person's citizenship status is not shared. Registration forms are available at <https://www.sss.gov>, and any U.S. Post Office.

Don't forget to complete your 2020 Census Online (use the link found on page 6).

Census takers will begin visiting homes that haven't responded to the 2020 Census to help make sure everyone is counted (May-July).



How to get Alamo Alerts (RAVE)

Make Sure that YOU get Alamo Colleges Alamo Alerts: Alamo Colleges email addresses are automatically subscribed to the Alamo Alert System. Log on to www.getrave.com/login/alamo to update your profile. We highly encourage you to add your mobile phone.

Note: If you have already entered your mobile number in our previous Alamo Alert System, all you have to do is log in and confirm your mobile number. If you have never entered your mobile number, you will not receive text alerts on your cell phone.

- The weather line: **210-485-0189** • Campus Police 24-hr. Dispatch: **210-485-0099**
- Campus Police Emergency: **210-485-0911** • Learn more at <https://www.alamo.edu/about-us/our-district/contact-us/emergency/alamo-alert/>, or contact Will Davis via email (wdavis1@alamo.edu), or by phone at **210-485-0063**.

International Student Services (MLK and SW Campus)

For more information contact Meredith Bess at 210-486-2147.

The campus remains closed due to coronavirus, but teaching, learning, and staff support are provided remotely. Visit the [COVID-19 Update Page](#) or key in <https://coronavirus/www.alamo.edu/> to see the latest updates. Find resources for F-1 and M-1 visa holders at <https://www.alamo.edu/spc/admissions/specific-populations/international-student-services/>. Services include:

- Immigration matters, such as obtaining F-1 student visas, maintaining full-time enrollment, transferring administration of your SEVIS I-20 record between schools, and traveling outside of the United States
- Academic advising available to assist ELL and international students with course and program planning
- Employment restrictions and options and obtaining work authorization
- Adjustment to St. Philip's College and to life in San Antonio and the United States
- Provide letters for verification of your F-1 status for various purposes, such as obtaining a Texas driver's license or identification card

Library Resources and Services (MLK and SW Campus)

For more information contact April Schramm (210-486-2357), or Andrew Rivera (210-486-2564).

[Ask Us](#)

All checked out materials from the spring semester will be due on Saturday, May 16, 2020. You may disregard recent email about late materials. All fines will be waived through May 16. Announcements will be sent via Facebook, Library website, and LibGuides. Check these sites throughout this time. During this remote period, printed materials will be unavailable for circulation, however, you can access all electronic resources through the library website. For assistance with the databases, type your question in the **ASK US** section found at the top of the library homepage <https://www.alamo.edu/spc/library>. The Library's Virtual Reference Desk will be staffed from 7:00 am-7:00 pm Monday-Thursday, 8:00 am-5:00 pm on Friday, and closed on Saturday and Sunday. During open hours, you can contact us via chat or phone. We will respond by the next business day. Remember, the Library is here to support you. Reach out if you have any questions.



Did you have a great experience with a service offered at the college or do you want something addressed? You can now do that with our "Feed the Tiger" form. We want to hear from you and address your concerns. Click on the orange button at <http://spcweb.alamo.edu/feedback/index.html>.

Military Support Services (Offices at Military Installations)

For more information contact Betsy Hamilton at 210-486-2610.

In response to the Coronavirus COVID-19, all face to face student services at Lackland, Randolph and Fort Sam Houston has been suspended. All Joint Base San Antonio classes have been temporarily converted to distance learning until further notice.

Registration for JBSA courses will continue via online and registration request through email, in accordance with DoD registration priority order. See course notes in the online schedule through ACES for more information.

Veterans
Crisis Line



Reserved Courses for our Military & Veteran-connected Families! [Online and Campus](https://www.alamo.edu/siteassets/spc/admissions--aid/specific-populations/military--dependents/documents/202030-print-sched-res-sections-v.3.24.20.pdf) (or <https://www.alamo.edu/siteassets/spc/admissions--aid/specific-populations/military--dependents/documents/202030-print-sched-res-sections-v.3.24.20.pdf>)

[Joint Base San Antonio Courses](https://www.alamo.edu/siteassets/spc/admissions--aid/specific-populations/military--dependents/documents/202030-print-jbsa-2pgs-25-mar.pdf) (temporarily remote, until further notice), or <https://www.alamo.edu/siteassets/spc/admissions--aid/specific-populations/military--dependents/documents/202030-print-jbsa-2pgs-25-mar.pdf>.

You may reach the Military Support Services team by phone, Monday-Friday from 0800-1700 at the following numbers:


For fastest service during this time, email dst-military@alamo.edu.

Fort Sam Students	Ms. Allison Joubert	(210) 486-2004	https://www.alamo.edu/fortsam
Lackland Students	Mr. Javier Barron	(210) 486-7224	https://www.alamo.edu/lackland
Randolph Students	Ms. Cynthia Jaime	(210) 486-2901	https://www.alamo.edu/randolph
General Information	Ms. Sarai Duran	(210) 486-2001	https://www.alamo.edu/military

Alamo Colleges Helpline
210-486-1111

Available Remote Services includes, but is not limited to:

- Academic and career exploration and information
- Admission and enrollment services
- Placement and TSI questions
- Residency classification issues
- ACES (Student Portal) navigation assistance
- Basic financial aid assistance
- Tuition Assistance (TA) and MyCAA* funding help and information
- Preliminary advisement, Military and MyCAA* education and training plans
- Graduation applications
- Referrals



The U.S. Census is hiring. If you have a work permit you can work for the Census. Apply online:
<https://2020census.gov/en/jobs.html>

Phi Theta Kappa Honor Society (MLK and SW Campus)

For more information contact Maria Botello at 210-486-2199.



Students who have a cumulative (overall) GPA of 3.5 or higher and have completed at least 12 college hours are qualified! Graduate with honors by accepting membership! For more information about this award winning honor society, contact a Chapter advisor at <https://www.alamo.edu/spc/experience-spc/campus-life/get-involved/honor-society/> and visit the organization's website <http://www.ptk.org/Join.aspx>. Please provide your name, telephone number, email address, and Banner ID when calling or emailing.

Your response matters:

CENSUS 2020:

It is estimated that an undercount of Texas' population by even 1% in 2020 could result in a \$300 million loss of federal funding. To learn how Census data impacts you and your community [click here](#), or visit <https://2020census.gov/>.

Did you know . . .

By law, the Census Bureau cannot release any identifiable information about you, your home, or your business, even to law enforcement agencies. That's protected under Title 13 of the U.S. Code.

When you respond to the census, your answers are kept anonymous. They are used only to produce statistics. To learn more about how we protect your privacy [click here](#), or visit <https://2020census.gov/>.

CENSUS 101: WHAT YOU NEED TO KNOW
The 2020 Census is closer than you think!
Here's a quick refresher of what it is and why it's essential that everyone is counted.

- Everyone counts.**
The census counts every person living in the U.S. once, only once, and in the right place.
- It's about fair representation.**
Every 10 years, the results of the census are used to reapportion the House of Representatives, determining how many seats each state gets.
- It's in the constitution.**
The U.S. Constitution mandates that everyone in the country be counted every 10 years. The first census was in 1790.
- It's about \$675 billion.**
The distribution of more than \$675 billion in federal funds, grants and support to states, counties and communities are based on census data. That money is spent on schools, hospitals, roads, public works and other vital programs.
- It's about redistricting.**
After each decade's census, state officials redraw the boundaries of the congressional and state legislative districts in their states to account for population shifts.
- Taking part is your civic duty.**
Completing the census is mandatory: it's a way to participate in our democracy and say "I COUNT!"

Shape your future START HERE > **United States Census 2020** **You can respond to the 2020 Census in Spanish.** By April 1, 2020, every home will receive an invitation to participate in the 2020 Census. You will have three options for responding: Online. By phone. By mail.

Dale forma a tu futuro EMPIEZA AQUÍ > **United States Census 2020** **Usted puede responder al Censo del 2020 en español.** Para el 1 de abril del 2020, cada hogar recibirá una invitación para participar en el censo. Usted <https://2020census.gov/es.html>

Records and Registration (MLK and SW Campus)

For more information contact Tracy Shelton at 210-486-2292.

The staff is dedicated to your success as a student. Contact staff in Records and Registration or Admissions, to get answers about the **new** FERPA Consent, cumulative hours, grades, GPA, Summer Momentum, and more. Let us know how we can help by calling us at 210-486-2700.

Graduation Information Update

For more information contact Enrollment Management at 210-486-2700.

Keep checking our website for degree or certification completion recognition updates. Details will be placed on our website soon at <https://www.alamo.edu/spc/2020grads>.

Fall 2020 graduation applications will be accepted between July 1 – October 31, 2020. Review Graduate Checklist at <https://www.alamo.edu/spc/experience-spc/current-students/graduation/>. For more information on the Advising Institutes, visit <https://www.alamo.edu/spc/academics/academic-resources/academic-advising/>.

The last day for **Incomplete "I" Grades** to be completed are as follows:

<u>Due Date</u>	<u>Terms/Parts of Terms</u>
September 14, 2020	Fall 2019: Wintermester Session
September 14, 2020	Spring 2020: Regular 16-Week, Start Two 14-Week, Flex I and Flex II sessions
December 14, 2020	Summer 2020: Maymester, First Summer, Eight Week and Second Summer sessions

Stay on track -- connect with your Certified Academic Advisor now. For more information visit <https://www.alamo.edu/spc/academics/academic-calendar/>. See other important dates at <https://myspccatalog.alamo.edu/content.php?catoid=177&navoid=10907#summer-registration-calendar!>

Records and Registration: 210-486-2700, 210-212-5266 Local, or 1-844-202-5266 toll free. Need more Help? Visit <https://www.alamo.edu/spc/academics/academic-resources/academic-advising/graduation-ready/>.

Strategies of Behavioral Intervention (MLK and SW Campus)

For more information contact Maria Botello at 210-486-2199.

The Strategies of Behavioral Intervention (SOBI) mission is to promote student, faculty and staff success and campus safety. The SOBI protocol guides our college community to recognize, prevent and respond to incidents. Learn more at <https://www.alamo.edu/spc/about-spc/compliance/strategies-of-behavioral-intervention-sobi/>.

Student Survey

St. Philip's College has a vested interest in your success! Help us learn how we can better serve your needs by taking a brief survey, if you have not already done so.

Ensure completion by selecting the FINISH button to submit.

<https://survey.alamo.edu/Survey.aspx?s=0dba070c086e48a6b332714c7b7c6aa2>

Student Conduct/Title IX (MLK and SW Campus)

For more information contact John Martin at 210-486-2746.

The college remains closed due to coronavirus, but teaching, learning, and staff support are provided remotely. Please visit the [COVID-19 Update Page](https://coronavirus/www.alamo.edu/) or key in <https://coronavirus/www.alamo.edu/> to see the latest developments. Updates are posted as soon as they become available.

Note: Students with a T9 Registration Hold - Sexual Assault Prevention for Community Colleges (SAPCC) training is required for all new, returning and transfer students who enrolled at St. Philip's College Spring 2020. Students who have not completed the training will have a Registration Hold (T9) placed on their record. To ensure you do not have a Registration Hold on your record, do the following:

1. Login to ACES
2. Go to the Student Tab
3. Click Web Services
4. Click the Student Tab
5. Click Student Records
6. Click View Holds

If you have a hold, email John Martin at jmartin139@alamo.edu Include your full name, banner ID# and contact information for prompt response.



<https://www.alamo.edu/spc/about-spc/leadership/president/presidents-newsletters/>



Abuse can look different for immigrants. Call our confidential 24-hour bilingual crisis/domestic violence helpline: 651.772.1611

<https://casadeesperanza.org/>

Keep Learning Plan

The **Keep Learning Plan** encompasses four major initiatives effective only for 2020. Learn more at <https://www.alamo.edu/keeplearning/>.



Here are 3 of those 4 initiatives. For more information about [Clean Slate](#), [Expanded Summer Momentum](#), or the [Reduced Payment Plan](#) contact the SPC Business Office 210-486-2200, via email at dst-vbo2@alamo.edu, or visit <https://www.alamo.edu/district/business-office/>.



Keep Learning Plan (continued)

No Cost Testing is from May 1 – June 20, 2020.

For more information call the SPC Testing Center at 210-486-2444, via email at spc-testcenter@alamo.edu, or visit us at <https://www.alamo.edu/admission--aid/testing-centers/>.



AlamoPROMISE Program - Complete your steps! (MLK and SW Campus)

We are Admissions, Business Office, Student Financial Aid at 210-212-5266, or Toll Free at 1-844-202-5266.

March 20 was the priority date to complete the remaining steps needed to be considered an AlamoPROMISE Scholar in Fall 2020. In sensitivity to the COVID-19 situation, remaining items submitted after the priority date will be considered on a space available basis.

Alamo Colleges District and its partners are committed to ending poverty, enhancing economic and social mobility and meeting workforce demands in our City by joining forces to help more students complete college and obtain the necessary skills to hold high-wage, high-demand jobs. For more information visit <https://www.alamo.edu/promise/about/>.



It is our goal to allow as many eligible students as possible to take advantage of the exceptional opportunity offered by **AlamoPROMISE**. Continue with items 2 and 3.

1. *(The period for new "Save Your Seat" application is closed.)*
2. File for Financial Aid (Free application for FAFSA or TASFA) by March 20
3. Apply to an ACD College (www.applytexas.org) by March 20



Completing these steps ensures that tuition and mandatory fees at the Alamo Colleges are covered for Bexar County students who graduate from participating high schools. As last-dollar funding, **AlamoPROMISE** covers the gap between financial aid and the cost of tuition for up to three years. Your household income does not disqualify you and because we know plans sometimes change, you are not locked into a commitment. Need assistance? We are here to help: **St. Philip's College** (210-486-2150), spc-recruit@alamo.edu. Learn more at <https://www.alamo.edu/promise/>, or email the **AlamoPROMISE team** at Promise@alamo.edu for assistance.

Student Financial Aid Office (MLK and SW Campus)

For more information contact Grace Zapata 210-486-2269.



We are excited to offer the **Student Emergency Aid (CARES Act) grant** to eligible students at this time! **The application is available through ACES (read more on page 2)**. We encourage students to browse through Alamo's website <https://www.alamo.edu/studentemergencyaid/> to view important eligibility requirements. **Call 210-210-212-5266, or toll free at 1-844-202-5266, or reach us via email dst-sfs@alamo.edu.** We are here to help!

Student Financial Aid Office (continued)

For more information contact Grace Zapata 210-486-2269.

The Summer 2020 Financial Aid Application is now available through July 15, 2020. See priority dates and deadlines at <https://www.alamo.edu/admission--aid/paying-for-college/financial-aid/priority-dates-and-deadlines/>. In order to be eligible, you must:

1. Have a current year FAFSA on file
2. Have completed verification, if selected
3. Be enrolled for a summer term
4. Have submitted a summer application request online from their ACES account

Financial Aid TV is available 24/7. Get your financial aid questions answered with FaTV using videos on all the important topics. Browse by category, or search our library of videos. FaTV can be found at <https://www.alamo.edu/admission--aid/paying-for-college/financial-aid/financial-aid-tv/>.

Priority Dates and deadlines are at

<https://www.alamo.edu/admission--aid/paying-for-college/financial-aid/priority-dates-and-deadlines/>.

Need help completing the TASFA? No problem! Contact Carmen de Luna Jones at 210-485-0280 or 210-989-5999 for assistance.

For more Financial Aid news call 210-210-212-5266, or toll free at 1-844-202-5266, via email at dst-sfs@alamo.edu, or visit <https://www.alamo.edu/spc/admissions/pay-for-college/financial-aid/>. Please have or include your Banner ID when calling or emailing.

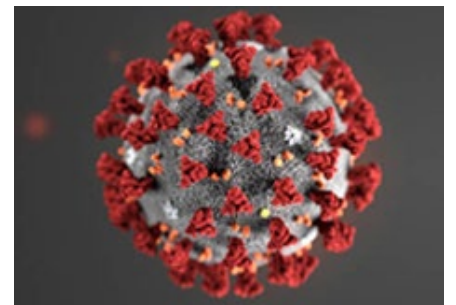
SPC Health Center (MLK and SW Campus)

For more information contact Eliah Casillas at 210-486-2222.

Prepare now before someone in your household becomes ill. Have a designated room ready with good ventilation, windows, some form of cooling system, and a designated restroom if possible. Always have commode lid down prior to flushing. Do not use a sick person's utensils.

As soon as someone in your household appears sick or reports not feeling well, isolate them and call a healthcare provider for directions. **So far medical experts ask the public** not to go to the hospital unless they are having trouble breathing, or have been instructed to do so by the provider. When sheltering at home have only one designated person caring for the sick. Masks and gloves should be used by both persons, when care is being provided, and remember to wash hands properly and often. Proper hand-washing instructions are at <https://www.cdc.gov/handwashing/>. Experts recommend these additional precautions:

- Mask mouth and nose when around others. The mask is meant to protect others in case you are infected. You can spread COVID-19 to others even if you do not feel sick.
- Purchase or make masks of 100% cotton, and do not purchase N-95 masks required for healthcare workers.



April 20, 2020 marked the first day that residents in Bexar County are required to wear face coverings in public places if they are 10 years old or older. Under the emergency orders, violations can result in a fine up to \$1,000 or up to six months in jail. **San Antonio Express News**

SPC Health Center (continued)

For more information contact Eliah Casillas at 210-486-2222.

- Everyone should now wear a mask when in public (grocery stores, errands of great necessity, etc.).
- Masks should not be placed on young children **under age 2**, anyone who has trouble breathing, or someone who is unconscious, incapacitated, or otherwise unable to remove the mask without assistance.
- Stay home. Practice social distancing while in public places by maintaining a distance of 6 feet or more. Masks are not a substitute for social distancing.
- Wash hands thoroughly before and after using masks and gloves.

Learn more at <https://www.cdc.gov/coronavirus/2019-ncov/if-you-are-sick/steps-when-sick.html>.

Student Life (MLK and SW Campus)

For more information contact Dr. Angela McPherson Williams at 210-486-2090.

Event: Spirit Days
Date/Time: May 6, 13, 20, and 27
Location: Online
Summary: Wear your favorite St. Philip’s College shirt or wear school colors – royal blue and white. Post your picture on Instagram at <https://www.instagram.com/spcspiritandpridecrew/>.

Event: Power up for Finals – Stress Relief
Date/Time: May 11 12:00 pm - 1:00 pm
Location: Online
Summary: Come join us for an engaging hour on Zoom in with the Department of Student Life “Tiger Nation United” from 12:00 pm – 1:00 pm for games and stress relief. To join, click on the link <https://alamo.zoom.us/j/211938372>.

Event: SPC Welcomes New Tigers for the Maymester Session
Date/Time: May 18 - 21
 Monday, Friday 9:00 am – 12:00 noon, and 2:00 pm – 5:00 pm
 Tuesday, Thursday 8:00 am – 11:00 am, and 1:00 pm – 4:00 pm
 Wednesday 10:00 am – 1:00 pm, and 4:00 pm – 5:00 pm
Location: Online
Summary: Please come join the ESS Zoom Meetings and the Department of Student Life will assist in helping you with any questions you may have about St. Philip’s College. To join, click on this link <https://alamo.zoom.us/j/660619244>.



Office of the Mayor
Ron Nirenberg



City of San Antonio and Bexar County announce continued Stay Home, Work Safe Orders

Mayor Ron Nirenberg and Judge Nelson Wolff issued separate but joint updates to their Stay Home, Work Safe Orders to continue slowing the spread of COVID-19. The orders are effective beginning at 11:59 p.m. on April 29, 2020 until 11:59 p.m. on May 19, or until it is either rescinded, superseded or amended.

The City’s order can be [found here](#). The County’s order can be [found here](#). The order contains information about the continued use of face coverings, stay at home orders, and reopening of businesses.

New City of San Antonio COVID-19 website

[The City of San Antonio has a new COVID-19 website](#). The website will serve as a portal for all of the City’s COVID-19 information including information about the virus, prevention, testing, financial support, and updated orders from the government. Visit https://covid19.sanantonio.gov/Home?mc_cid

The National Domestic Violence
HOTLINE
 1.800.799.SAFE (7233) • 1.800.787.3224 (TTY)

¡Celebra Cinco de Mayo!

Tutoring Services and Service Learning (MLK and SW Campus)

For more information contact Elizabeth Castillo at 210-486-2473.

DACA Allies

Speak confidentially to District Coordinator Carmen de Luna-Jones (210-485-2080), SPC Director Liz Castillo (210-486-2473), or SPC Counselor Rosalinda Rivas (210-486-2117). Find additional resources for Deferred Action for Childhood Arrivals (DACA) at <https://www.alamo.edu/spc/admissions/specific-populations/daca/>.

Financial Literacy Program

Event: Free Online Financial Coaching

Date/Time: By appointment

Location: <https://www.aie.org/coaching/>

Summary: This free service, in partnership with Trellis, is designed to help you make smart financial decisions. For more information contact Enida Rehome (210-486-2140).

Event: Graduating Students - You've Got This! Repayment Video

Date/Time: May 1 / Ongoing (on Student's Time)

Location: Financial Literacy Page (www.alamo.edu/spc/financial-literacy/)

Summary: Graduating students with student loans will be able to learn about the different repayment options to ensure they find a repayment plan that best fits their financial needs.

Tutoring Services

You can still reach us at 210-486-2527. During remote learning, tutoring is available online with St. Philip's tutors through **Brainfuse** or **Zoom**. Subjects offered and tutor email addresses are listed at

<https://www.alamo.edu/spc/academics/academic-resources/tutoring-centers/tutoring-and-technology-center/>.

Brainfuse online is provided free through your Canvas course and is available 24/7, with support for students with disabilities (online one-on-one tutoring help). Additional resources for distance learners are at

<https://www.alamo.edu/spc/academics/distance-learning/>. Let us know how we can help!

Veterans Affairs (MLK and SW Campus)

For more information contact Veronica Griego at 210-486-2540.

Veterans Affairs

Certified Academic Advisors:

Tony Gable

Alicia Stolte

Vincent Garcia

lgable@alamo.edu

astolte2@alamo.edu

vgarcia365@alamo.edu

210-486-2521

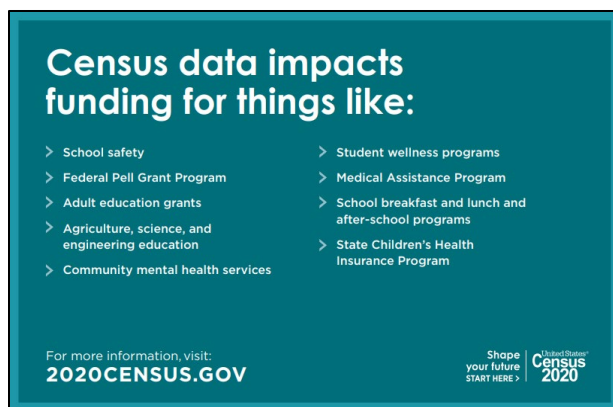
210-486-2539

210-486-2522

(O-Z)

(Gb-N)

(A-Ga)



Veterans Affairs (continued)

For more information contact Veronica Griego at 210-486-2540.

We are dedicated to providing the highest quality and comprehensive support to student veterans and their family members in an atmosphere that provides commitment, respect, and academic excellence. The Veterans Affairs office assists students by providing certification of courses and transmitting enrollment information to the Department of Veteran Affairs. For more information contact Veronica Griego (210-486-2540).

New Student Orientation (NSO): New Student Orientation is reserved for students currently enrolling for the Summer 2020 Semester. To view Checklist, online Registration Form, NSO handout, reschedule NSO, Veteran (and dependent family members) and Military Joint Base San Antonio (JBSA) sessions, visit <https://www.alamo.edu/spc/academics/academic-resources/academic-advising/new-student-orientation/>.



Volunteer Income Tax Assistance - VITA Program (MLK and SW Campus)

For more information contact Kenneth Bankston at 210-486-2872.

The campus remains closed due to coronavirus, but SPCs VITA Program is providing remote services at this time. For appointment submission of documents contact us at 210-486-2872, or via email at spc-vita@alamo.edu. For more information visit our website at <https://www.alamo.edu/spc/experience-spc/community/community-resources/vita/>.

Centers of Excellence for Math & Science (SW Campus)

For more information contact Maria Rodriguez at 210-486-7123, or Dr. Jo D. Duncan at 210-486-7121.

The campus remains closed due to coronavirus, but teaching, learning, and staff support are provided remotely. Please visit the [COVID-19 Update Page](#) or key in

<https://coronavirus/www.alamo.edu/> for the latest developments. For more information on college and career awareness of science, technology, engineering and mathematics (STEM), call Maria Rodriguez (210-486-7123), or visit our website at <https://www.alamo.edu/spc/academics/academic-resources/academic-centers/centers-of-excellence/>.

Math Emporium Lab (SW Campus)

For more information contact Renita Mitchell at 210-486-2607.

Math Bridge: For more information about remote tutoring contact Paula Englebert (210-486-7241), or visit <https://www.alamo.edu/spc/academics/academic-resources/tutoring-centers/mathemporium/>.

Free VITA Tax Preparation for income \$55,000 or less (Remote Assistance Only)

The following [VITA tax preparation centers](http://vitas.org/?mc_cid=db45cc5dbb&mc_eid=0498ef8875) http://vitas.org/?mc_cid=db45cc5dbb&mc_eid=0498ef8875 are operating remotely. Must call the centers for appointment submission.

Willie Velasquez Center: 10am - 4pm for appointments only via email or phone. Call 210-207-1711, or 210-207-6575. Email Christine Serda, christine.serda@sanantonio.gov, or Leticia Velasquez leticia.velasquez@santonio.gov.

Guadalupe Community Center: (8:30am - 5pm, drop-off only). Call 210-222-2975 for more information.

Just have 1 or 2 W-2's? Consider using
[My Free Taxes](#)

Workforce Training Network (SW Campus)

For more information contact Alfred Landeros at 210-486-7082.

Workforce Training and Certifications - The Workforce Training Network remains closed due to coronavirus, but teaching, learning, and staff support are provided remotely. Please visit the [COVID-19 Update Page](#) or key in <https://coronavirus/www.alamo.edu/> to see the latest developments. Updates are posted as soon as they become available.

We offer non-degree courses, certificates, and industry specific certifications. To learn more about career, job training and continuing education that can meet your goals contact Alfred Landeros (210-486-7082), or via email (alanderos1@alamo.edu). Please provide your name, telephone number, email address, and Banner ID when calling or emailing. Learn more at <https://www.alamo.edu/spc/academics/wtn/>.

Workforce Solutions Alamo - WSA (Off-Site)

For more information contact Rosie Maldonado at 210-582-1826.

American Job Center - We Help with Employment Information and Opportunities. In order to comply with ongoing emergency orders the Workforce Solutions Alamo (WSA) Career Centers have been modified and remain open to clients throughout the city by appointment. We are here to help! The Alamo Region serves Atascosa, Bandera, Bexar, Comal, Frio, Gillespie, Guadalupe, Karnes, Kendall, Kerr, McMullen, Medina and Wilson counties.

All WSA events and job fairs are cancelled due to COVID-19. Inquiries, questions and comments are made by calling 210-272-3260, or completing the **Inquiry form** on our website <https://www.workforcesolutionsalamo.org/>. Expect some delays due to high volume of inquiries.

Central Texas Technology Center - CTTC (Off-Site)

For more information contact Janice Roth at 210-486-7410 (or 1-830-609-2106).

The CTTC provides higher education and technical skills training to promote employment opportunities in high demand occupations, and is located in New Braunfels, TX (78130). For more information visit <https://www.alamo.edu/cttc/central-texas-technology-center/>.

Programs include Vocational Nursing (SPC Off-Site); Economic and Workforce Development (Advanced Manufacturing & Logistics, Health & Biosciences, and Science & Technology); and Integrated Basic Education Skills Training. Review the Spring 2020 Course Schedule at <https://www.alamo.edu/cttc/course-scheduleregister/>. Contact us: Becky Cole, Student Advisor, bcole18@alamo.edu (210-486-7422); Leonor Wright, Senior Advisor, lwright3@alamo.edu (210-486-7409); or Janice Roth, Director, jroth5@alamo.edu (210-486-7410). Please provide your name, telephone number and Banner ID, when calling or emailing.

Tell us how we can improve our services by taking our survey at <https://www.surveymonkey.com/r/LL76ZT5>.



Deferred Action (Off-Site)

For more information contact Carmen De Luna-Jones at 210-485-0280.

The Brackenridge and Harlandale Education Centers remain closed due to coronavirus, but teaching, learning, and staff support are provided remotely. Let me know how we can help. Call 210-485-0280 or email me at mdeluna-joness@alamo.edu. Please provide your name, telephone number, email address, and Banner ID when calling or emailing. We have resources for our students, and our Personal Counselors are culturally sensitive and ready to assist at any of the Alamo Colleges, Counseling Services: NVC 210-486-4466/210-486-4419; PAC 210-486-3750, SPC 210-486-2333, NLC 210-486-5000, and SAC 210-486-1620.

Special populations: In effort to provide access to higher education for the entire community, Alamo Colleges District offers programs and support services to help individuals from all walks of life achieve their dreams by way of earning a degree.

To locate resources on immigrant rights to advocate for yourself and protect your community, visit <https://www.alamo.edu/spc/admissions/specific-populations/daca/>. View an important immigrant's training video, "Know Your Rights & Family Preparedness". The video can also be viewed in Spanish.

What should I do if I believe an enforcement action has taken place that is inconsistent with this guidance? DHS has explained that there are a number of locations where an individual may lodge a complaint with DHS about a particular immigration enforcement action that may have taken place in violation of these or other policies. You may find information about these locations, and information about how to file a complaint, on the DHS website at <https://www.dhs.gov/>, the CBP website at <https://www.cbp.gov/>, or ICE website at <https://www.ice.gov/>.

You may contact ICE Enforcement and Removal Operations (ERO) through the Detention Reporting and Information Line (1-888-351-4024), the local ERO office: San Antonio Field Office (210-283-4750), or the online form at <https://www.ice.gov/webform/ero-contact-form>. The Civil Liberties Division of the ICE Office of Diversity and Civil Rights may be contacted at 1-202-732-0092 or ICE.Civil.Liberties@ice.dhs.gov.

You may contact the CBP Information Center to file a complaint or compliment via phone at 1-877-227-5511, or submit an email through the website at <https://help.cbp.gov>.

Where should I report discrimination if I believe it is taking place in my school? Anyone with information about discrimination occurring in schools, including discrimination on the basis of race, color, or national origin (which may include citizenship or immigration status), may file a complaint by contacting the U.S. Department of Education, Office for Civil Rights via <https://www.state.gov/s/ocr/>, 1-800-421-3481 or TDD: 1-800-877-8339 (for language assistance contact 1-800-USA-LEARN {1-800-872-5327}) or by contacting the U.S. Department of Justice, Civil Rights Division, Educational Opportunities Section via <https://www.justice.gov/crt/educational-opportunities-section>, 1-877-292-3804, or TTY: 1-800-514-0383.

Will enforcement actions ever occur at sensitive locations? DHS has explained that immigration enforcement actions may occur at sensitive locations in limited circumstances, but should generally be avoided. DHS officers and agents from U.S. Immigration and Customs Enforcement (ICE) or U.S. Customs and Border Protection (CBP) may conduct an enforcement action at a sensitive location only with prior approval from an appropriate supervisory DHS official, or if the enforcement action involves exigent circumstances related to national security, terrorism, or public safety, or where there is imminent risk of destruction of evidence material to an ongoing criminal case.

Brackenridge & Harlendale Education Centers

For information on IME BECAS Scholarships
Call (210) 485-0280 or (210) 989-5999



Alamo Colleges Foundation - DREAMers SCHOLARSHIP

The 2020 – 2021 Scholarship Application is online at www.alamo.edu/foundation/scholarships. DREAMers submit the application online, and retain the application number given to you for use on the Certification form. Submit the Scholarship Certification form to BETC before the deadline. For more information call Carmen De Luna Jones (210-486-0280).

Application Priority Deadline:
Application Final Deadline:

March 29, 2020
September 6, 2020



Don't be afraid to ask for help

Immigration relief is available for victims of human trafficking, domestic violence and other crimes. Visit <https://www.uscis.gov/tools/humanitarian-benefits-based-resources/resources-victims-human-trafficking-other-crimes>.

UTSA Dreamers Resource Center (Student Center for Community Engagement and Inclusion)

The **UTSA Dreamer Resource Center** is celebrating its second anniversary! The Center provides remote support services to Dreamers in navigating academic, mental health and legal resources. Call 210-458-7777, email dreamers@utsa.edu, or visit https://www.utsa.edu/dreamers/about/index.html?mc_cid=87f9bf2c86&mc_eid=0498ef8875.



The Public Charge Rule took effect Feb. 24, 2020

The Public Charge rule took effect February 24th for all green card applications. It is important to remember a few important things about this rule:

1. The rule doesn't affect everyone, **only** those who are applying for a green card through a family member or employer, or applying for certain non-immigrant visas.
2. The rule **does not affect people** who already have green cards, applying for citizenship, are refugees or asylees, have VAWA status, U or T visa status. If you already have a green card or if you are applying for citizenship this new rule will not affect you.
3. The new rule adds certain public benefits to consideration when applying for a green card. The **benefits that USCIS will look at** are: TANF, Social Security Supplemental Income (SSI), food stamps (SNAP), Medicaid, Section 8 housing benefits, and subsidized housing. Benefits received by your U.S. citizen children will not count against you.
4. If the program is not on the list it is not considered under the new rule. Head Start, school lunch, WIC, immunizations, unemployment benefits, or tax credits, **are not benefits** that will automatically be weighed against you under this new rule.
5. There is a new form that will have to be included with your green card application. The new form asks for a lot of information about your household finances, your education, whether you have health insurance, and your credit history.
6. The rule took effect February 24, 2020, so if your application is on file before that time, the new rule won't apply to you. Any benefits you receive before February 24th won't count against you.

Immigrant Legal Resource Center (ILRC) is at <https://www.ilrc.org/>. For more information and resources in languages other than English visit the **Protecting Immigrant Families** webpage: https://protectingimmigrantfamilies.org/know-your-rights/?mc_cid=cc04aaefee&mc_eid=0498ef8875.

Central Texas Office for Refugees launches new hotline for refugee services

The [Central Texas Office for Refugees](https://www.rstx.org/who-we-are/ctor.html?mc_cid=cc04aaefee&mc_eid=0498ef8875) (CTOR) launched a hotline to reach underserved refugee populations including Asylees, Cuban/Haitian entrants, and victims of human trafficking. The hotline was created to assist those who might be experiencing barriers to accessing critical services and is available in 5 languages. CTOR can help with food, medical care, cash assistance, housing, employment, English classes, transportation, and more. Visit https://www.rstx.org/who-we-are/ctor.html?mc_cid=cc04aaefee&mc_eid=0498ef8875.

To access the hotline call or text "Hello" to 844-286-7797 for locations and more information about CTOR programs. Phone support is available in English, Kinyarwanda, Nepali, Spanish, and Tigrinya. Text support is available in English and Spanish.

Cornell School of Law

1L Immigration Law and Advocacy Clinic

<https://www.lawschool.cornell.edu/Clinical-Programs/Immigration-Appellate-Law-and-Advocacy-Clinic/1L-Immigration-Law-and-Advocacy-Clinic.cfm>

04-06-2020

COVID-19 RESOURCES FOR UNDOCUMENTED IMMIGRANTS

Tangible Support for Undocumented Communities. List of compiled resources for undocumented individuals:

<https://immigrantsrising.org/resource/tangible-support-for-immigrant-communities-during-covid-19/>.

Healthcare Access for Undocumented Immigrants

Though undocumented individuals are typically not eligible for health insurance, there are many free/low-cost clinics that serve the uninsured: <https://unitedwedream.org/2020/03/healthcare-access-for-undocumented-folks-in-the-time-of-covid19/>.

Free Medical Clinic Directory that serve the uninsured: <https://freeclinicdirectory.org/>.

ICE Will Not Make Arrests at Hospitals - "ICE does not conduct enforcement operations at medical facilities, except under extraordinary circumstances. Claims to the contrary are false and create unnecessary fear within communities. Individuals should continue to seek medical care." Visit: <https://www.ice.gov/coronavirus>.

Responding to COVID-19: New York United Campaign: <https://www.nyic.org/our-work/campaigns/responding-to-covid-19-new-york-united-campaign/>.

COVID-19 AND IMMIGRATION LAW

USCIS COVID-19 Public Charge Notice - USCIS will not consider COVID-19 testing, treatment, or preventive care (including a vaccine if a vaccine becomes available) as part of a public charge inadmissibility determination, even if paid for by a public benefit like Medicaid: <https://www.uscis.gov/greencard/public-charge>. See also Public Charge FAQs COVID-19: <https://coronavirus.dc.gov/release/public-notice-public-charge-rule-faqs-covid-19-information>.

COVID-19 Stimulus Package: What Care Act Rebates Mean for Immigrants:

<http://wakeforestlawreview.com/2020/04/covid-19-stimulus-package-what-cares-act-rebates-mean-for-immigrants/>.

Cornell School of Law - 1L Immigration Law and Advocacy Clinic (continued)

Understanding the Impact of Key Provisions of COVID-19 Relief Bills on Immigrant Communities - “The purpose of this policy brief is to provide information on the COVID-19 relief package’s impact on low-income immigrants and suggestions for urgently needed improvements in any future relief bills, with a focus on health, public benefits, economic support, and employment protections. Please note that this is not meant to be a comprehensive analysis of the bill.”

See: <https://www.nilc.org/issues/economic-support/impact-of-covid19-relief-bills-on-immigrant-communities/>.

COVID-19 AND HEALTH INSURANCE

How Uninsured Patients Can Get Help During the Covid-19 Pandemic. This article explains how states are expanding eligibility so they can temporarily insure more of their residents during the pandemic. Private insurance companies are also asking Congress to open up enrollment on the federal exchange:

<https://www.pbs.org/newshour/health/how-uninsured-patients-can-get-help-during-covid-19-pandemic>

Scholarships and Giving Back Opportunities

Student Engagement Grants (SEG): Are you a full-time student? Do you have a GPA of 2.5 or higher? If so, you may qualify for a **\$1,000 Student Engagement Scholarship**. Students awarded this scholarship will participate in the **QEP Ethical Decision-Making Reading Buddies at Bowden Academy**. The project involves reading Children's books with ethical decision-making themes for students at Bowden Academy. To apply: <https://www.alamo.edu/spc/admissions/pay-for-college/scholarships/seg/>. For more information contact Irene Young at 210-486-2391, or email at iyoung@alamo.edu.

SEG Projects: Other grant projects are Allied Construction Technology (ACT) Community Service, Alamo Institute Student Leaders, Biology Research Project, Byrd Sanctuary Peer Tutors, Campus Tour Leaders, Collegiate 100, Cyber Tigers, Disability Services Peer Provider, Extramurals Sports Program, Jessica’s Project, Middle College Project, Peer Mentor Tutoring-Reading & Writing, QEP (What Would You Do?), SPC Community Garden, Spirit & Pride Crew, STEM Advocates, Stinson Air Museum, Student Government Association (SGA), Tiger PAWS (Personal Academic Writing Space), and Volunteer Income Tax Assistance (VITA). For more information visit <https://www.alamo.edu/spc/admissions/pay-for-college/scholarships/seg/> and connect with the various Project Managers.

2020-2021 Alamo Colleges Foundation Scholarship Application

The health, well-being and continued success of our students is uppermost in our minds during this period of transition to remote teaching and learning. To ensure that our students have the opportunity to apply for much-needed Alamo Colleges Foundation scholarships, the 2020-2021 Alamo Colleges Foundation scholarship application is at <https://www.alamo.edu/about-us/offices-departments/departments/foundation/students/>.

Deadline: September 6, 2020

SPC Scholarship Office

For more information contact Gloria Hernandez at 210-486-2498.

St. Philip's College Scholarships: All students are encouraged to apply online at <https://www.alamo.edu/about-us/offices-departments/departments/foundation/students/>.

Priority Deadline: March 29, 2020
Final Deadline: September 6, 2020

Scholarship Amount: Varies

Harvey Najim Pathways: Must be graduating from a high school in one of these ISD's: East Central, Edgewood, Harlandale, San Antonio, South San, Southside, Southwest, or Somerset. Pursue degree in Cyber-Security, Information Technology, Nursing, or Respiratory Care. For application information call Gloria Hernandez (210-486-2498).

Deadline: N/A **Scholarship Amount: \$2,500**

College for All Texans: Educational Aid Exemption Application

For more information, contact Alan David Ahmad at 210-485-0613.

The **EAE** is available to eligible students taking courses toward teacher certification and pays for the tuition and required fees for said coursework in the semester for which it was applied. The **Advisor-Cert-Form** is also available in the Student Financial Services office on your campus. Visit <http://www.collegeforalltexas.com/apps/financialaid/tofa2.cfm?ID=572>.



White House Initiative on Historically Black Colleges and Universities

U.S. Department of Education

The White House Initiative on Historically Black Colleges and Universities offers full-time internships year-round (spring, summer, and fall). Part-time applicants who can commit to at least 20 hours a week will be considered, although the Initiative prioritizes full-time applicants (32-40 hours a week). Internships are available in Washington D.C. at the U.S. Department of Education, Initiative headquarters.

How to Apply: Visit the [Department of Education's Internship page](#) for detailed instructions and the application.

- **Fall Deadline - July 15**
Dates of program: September through December
- **Winter/Spring Deadline - October 1**
Dates of program: January through May
- **Summer Deadline - March 15**
Dates of program: May/June through July/August

<p>FEDERAL SECTOR INTERNSHIPS HACU NATIONAL INTERNSHIP PROGRAM</p> <p>Work in Major U.S. Cities Gain Real World Experience</p> <p>CORPORATE SECTOR INTERNSHIPS</p>		<p>Paid Internships for all Majors.</p> <p>Work in Washington, D.C. or other major cities.</p>									
<p>To learn more, contact our Washington D.C. office at 202-467-0893, or visit www.hacu.net/hnip.</p> <p>Eligibility</p> <ul style="list-style-type: none"> • Be enrolled in a degree-seeking program • Must be an undergraduate who has completed freshman year • 3.0 GPA recommended • Be authorized or eligible to work by law in the U.S. • Completion of freshman year in college before the internship begins 	<p>Apply online at https://www.hacu.net/hacu/Apply Online.asp.</p> <table border="0"> <tr> <td>Sessions</td> <td>Deadlines</td> </tr> <tr> <td>Spring 2020:</td> <td>November 15, 2019*</td> </tr> <tr> <td>Summer 2020:</td> <td>February 14, 2020</td> </tr> <tr> <td>Fall 2020:</td> <td>June 5, 2020</td> </tr> <tr> <td></td> <td>*Extended date</td> </tr> </table>	Sessions	Deadlines	Spring 2020:	November 15, 2019*	Summer 2020:	February 14, 2020	Fall 2020:	June 5, 2020		*Extended date
Sessions	Deadlines										
Spring 2020:	November 15, 2019*										
Summer 2020:	February 14, 2020										
Fall 2020:	June 5, 2020										
	*Extended date										