

# Student Success Newsletter

St. Philip's College, 1801 Martin Luther King Dr., San Antonio, TX 78203  
St. Philip's College - Southwest Campus, 800 Quintana Rd., San Antonio, TX 78211

## Important February Dates

- February 2nd: Census Date (16wk)
- February 3rd: SAFB Pop-up Food Market (Full details pg. 4)
- February 11th: Census Date (S2)
- February 25th: Last day to withdraw (F1)

## Hours of Operation for February 2022

Mon, Tue, Thu, Fri	8:00 AM - 5:00 PM
Wed	8:00 AM - 7:00 PM
Saturday (02/05)	9:00 AM - 1:00 PM

## Message from our Interim Vice President:

Greetings SPC Tigers,

Hello from your Interim Vice President of Student Success! Let 2022 guide you to a learning model beyond academics. Alamo Experience can open your eyes to a window of opportunities; it includes activities that can increase your knowledge in a variety of areas. Getting involved with the campus activities will be a boost to your extracurricular activities and provide you the connection for a well-rounded semester.

Finally, please visit <https://alamo.edu/coronavirus> for an array of up-to-date information to support your academic journey.

As always, please reach out to me if I can be of service to you at: [dhester@alamo.edu](mailto:dhester@alamo.edu).

In service,

Diane Hester  
Interim Vice President for Student Success  
St. Philip's College

## AlamoCARES

For more information contact Diane Hester, Interim Vice President for Student Success, at 210-486-2252.

If you believe you have experienced Sexual Misconduct, you may consider the following options

- **Contact Campus Police** at 210-485-0099 (non-emergency) or 210-485-0911 (emergency).
- **Seek medical attention** at a hospital or with a physician.
- **Report the incident** at [www.alamo.edu/TitleIXCoordinator/](http://www.alamo.edu/TitleIXCoordinator/) (or call John Martin 210-486-2746).
- **Contact SPC Counseling Services** at 210-486-2333 (for confidential counseling and/or referrals).
- **Contact parents, relatives or close friends for support.**



Celebrate Financial Aid awareness month by completing your FAFSA or TASFA! For information on where you can get assistance completing your application virtually visit: <https://bit.ly/ACDfas>

## ATTENTION STUDENTS!

All entering freshmen, former and transfer students are required to complete **“Sexual Assault Prevention for Community Colleges” training** before the end of their first semester of classes at St. Philip's College. Students receive an email invitation in their ACES email inbox after the 12th day of class. The subject line will read: “Sexual Assault Prevention for Community Colleges.”

**Continuing students who did not complete the training by November 1st have a registration hold that must be resolved before they can register.**

**Note:** To ensure you do not have a Registration Hold on your record, log in to ACES --> Student Menu (on left) --> Web Services --> Student tab (top) --> Student Records --> View Holds.

If you have a Title IX hold, email John Martin at [jmartin139@alamo.edu](mailto:jmartin139@alamo.edu). Include your full name, Banner ID# and contact information for prompt response.



**2022-2023 Foundation Scholarship Applications Now Open until May 1, 2022**

Apply for a large variety of scholarship opportunities through one application!

For more info visit: <https://bit.ly/ACDfoundation>

# Academic Advising

For more information, contact at [spc-advising@alamo.edu](mailto:spc-advising@alamo.edu)

**Tiger Nation thrives in Advising!** Advising Services are offered in-person at the Welcome Center. Schedule an appointment with your Certified Advisor via Alamo NAVIGATE starting in February. Learn more at [www.alamo.edu/spc/academic-advising](http://www.alamo.edu/spc/academic-advising)



## Advising Appointment Scheduling in Alamo NAVIGATE:

1. Log in to your ACES Account.
2. Click on the "Start Here" tab.
3. Select the "Alamo NAVIGATE" icon.
4. Click "Login".
5. Select the "Appointments" tab.
6. Select "Schedule an Appointment".
7. Select "Advising" as appointment type.
  - a. Any other appointment type is for a different department.
8. Select the Reason for your appointment and hit Next.
9. Select the Location and hit Next.
10. Select the day/time that works for you and hit Next.
11. Enter "Zoom Appointment" in the Notes box
12. Review the selection and confirm your appointment.
13. Review confirmation message sent to ACES email.

## February 2022 Drop-in Advising Services for new students in Welcome Center:

Monday	1:00 PM - 5:00 PM
Wednesday	5:00 PM - 7:00 PM
Saturday 02/05	9:00 AM - 1:00 PM

### Payment Plans & Refunds

Please visit

<https://www.alamo.edu/district/virtual-business-office/> for more information on payment plans and Financial Aid refunds

## How to Register!

The Alamo Colleges has a registration tool! The tool offers a modern interface, improved search capabilities, and more. Using the new tool, students can:

- Prepare for registration
- Synchronize existing degree plans
- View past schedules
- Browse classes and the course catalog
- Register for classes



Students needing assistance with the new registration tool are encouraged to visit

<http://bit.ly/ACCDregistration> to watch a how-to video or contact their advising center for additional assistance.

**New Student Orientation (NSO):** NSO and Group Advising is mandatory for all First Time in College, Returning, and Transfer students. NSO is remote on a Canvas platform and accessible via your ACES portal within 2-3 business days upon successful completion of the Online Registration Form.

The preferred browser for the course is Google Chrome. Students must have a current/active admissions application on file to register and participate in the Canvas course. Visit <https://www.alamo.edu/spc/nso> . (Group Advising for new students available after completion of NSO to help with initial enrollment)

## Bookstore

Visit <https://bit.ly/spcbookstore> to shop online or visit in Turbon Student Center during store hours below:

Monday - Thursday 8:00 AM to 5:00 PM  
Friday & Saturday 9:00 AM to 1:00 PM

## Campus Contacts

[CLICK HERE](#) for a list of contacts for frequently used departments across SPC.

## Business Office

For more information, contact Sofia Zavala at 210-486-2247 or [dst-vbo2@alamo.edu](mailto:dst-vbo2@alamo.edu).

We can answer questions about billing, Academic and Continuing Education Payment Plans, or tuition discounts and waivers. Provide your name, telephone number, email address, and Banner ID when calling or emailing.

## Career Readiness and Experiential Learning Services

### Featured Experiences



Opportunities through Google

- [Grow With Google Program](#)
- [BOLD Immersion Program](#)



Base 11 Digital: Featured Internships

- [Dassault Systems](#)
- [Sensata Technologies](#)
- [Regeneron](#)



Hispanic Association of Colleges and Universities

- [Internship opportunities](#)
- [Corporate Internships](#)



Students + Startups

- [Summer Internship Info](#)
- [Application Deadline February 4th!](#)



Career Opportunities for Students:

- [Stay up-to-date](#)
- [AlamoEXPERIENCE Resource Guide](#)

[Click here](#) for CRELS website and contact Nathaniel Martinez at 210-486-2351 or via email at [nmartinez324@alamo.edu](mailto:nmartinez324@alamo.edu) for additional questions.

**Grow With Google Career Readiness Program** curriculum offers students the opportunity to build digital and professional skills, explore careers, and get success guidance for today's workplace. The platform also provides easy integrations into course curriculum for faculty. Students can visit <https://bit.ly/spcgwg> to sign up and start learning! Faculty can reach out to CRELS to be added as an Instructor.

Join [Base 11 Digital](#) to connect with a network of resources and professionals in the STEM field to guide you along your STEM pathway, especially for women and BIPOC! This is also where you can apply to the Boulé Fellowship Program.

**UT Austin College of Pharmacy** is providing a three day on-campus immersion program June 5-8, 2022 to gain exposure to the diverse field of pharmacy. **Application deadline** for program is **February 25, 2022** and can be accessed [here](#). Students must have GPA of at least 2.75 and will need to upload a resume, letter of recommendation, and an essay (500 words max) explaining why they would want to participate and what they wish to accomplish with this program.

Students and employees can access Handshake to connect directly with our employer partners for job/internship opportunities and to attend events hosted by employers through Handshake. **Click the Handshake logo** and use your ACES login credentials to access.



## Centers of Excellence for Math & Science

For more information contact Dr. Marie-Michelle Saint Hubert at 210-486-2733, or Dr. Jo Dee Duncan at 210-486-7121

Students can apply for STEM related research projects and outreach programs. Opportunities exist year-round and can range from single day events to 8-week programs. Please visit [bit.ly/SPC\\_COE](https://bit.ly/SPC_COE) to review all available opportunities coordinated through the Center of Excellence or see applications below.

[Student Assistant Experience Application](#)

[CIMA-LSAMP Undergraduate Research Program Application](#)

## Child Development Center

For more information, contact Monica Guzman at 210-486-2501.

Those interested in subsidized off-campus care with a partner childcare program may contact us (210)486-2500, or email [mguzman15@alamo.edu](mailto:mguzman15@alamo.edu). Eligibility and payment information is at <https://www.alamo.edu/spc/child-dev-center>.

## City Workforce Recovery Program

For general job placement assistance contact Workforce Solutions Alamo at 210-224-4357 or visit [www.workforcesolutionsalamo.org](http://www.workforcesolutionsalamo.org).



**Train for Jobs-SA** offers training and education to eligible San Antonio residents displaced due to the COVID-19 pandemic. The program helps get people back to work, offers stipends, provides skills and career assessments, GED preparation, and on-the job training. Students in the program can earn \$15 an hour, to a maximum of \$450 a week this semester. See <https://www.alamo.edu/sarecovery> for more details!

## Counseling Services

For more information, call 210-486-2333.

Life is stressful. We can help. Mental health counseling is free to current SPC students. Give us a call at 210-486-2333 or email Roxanne Maynard at [rmaynard4@alamo.edu](mailto:rmaynard4@alamo.edu) or Eitandria Tello at [egatlin2@alamo.edu](mailto:egatlin2@alamo.edu) to schedule a confidential appointment. Learn more at our website: <https://bit.ly/SPCcounselingservices>

Interested in changing the conversation about mental health at SPC? Join Active Minds today and find other students like you who want to create a healthy campus environment. Learn more at [alamo.edu/spc/active-minds](http://alamo.edu/spc/active-minds).



## Disability Services

For more information, contact Konnie Harper-Thompson at 210-486-2199 or 210-486-2411

The disability services office provides reasonable accommodations to eligible students. Please contact us at 210-486-2199 or by email at [spc-dss@alamo.edu](mailto:spc-dss@alamo.edu) for questions and guidance. We encourage you to visit our website to review the process for TSI, Registration and Enrollment, TEAS, and Classroom Accommodations at [www.alamo.edu/spc/disability-services](http://www.alamo.edu/spc/disability-services).

Upcoming Pop-Up Market at SPC Parking Lot 22/23

Thursday, February 3rd | 3pm-5pm

Registration is required at SAFB 210-431-8326. View distribution calendar at <https://www.alamo.edu/advocacy>. Students or partners can volunteer at <https://www.alamo.edu/volunteer-form/>.



Do you have something to share, like a great experience with a service, or perhaps you want something addressed? You can do that with our "Feed the Tiger" form. Click on the "Submit Feedback" button underneath video at <https://www.alamo.edu/spc/feed-the-tiger>.

## Financial Aid Office

For more information contact Grace Zapata 210-486-2269.

Contact us at 210-212-5266 or via email [dst-sfs@alamo.edu](mailto:dst-sfs@alamo.edu). Include your Banner ID when contacting us. Inquire about FA applications, direct loan requests, FA appeals, and more. See [priority dates and deadlines](#). **Financial Aid TV is available 24/7**. Get your questions answered with [FaTV](#). We are here to help!

**First time in college students** can reach out to SPC College Connection staff at 210-486-2150 or via email [SPC-recruit@alamo.edu](mailto:SPC-recruit@alamo.edu) for assistance in completing the FAFSA to ensure it matches with ApplyTexas application.



### TASFA Assistance

If you're a DACA student and you need help with college enrollment or financial aid, then please reach out to contacts below:

**Brackenridge (Eastside) Center**  
(210)485-0280

**Harlandale (Southside) Center**  
(210) 989-5999

[www.alamo.edu/district/daca](http://www.alamo.edu/district/daca)



# Good Samaritan Veteran's Outreach & Transition Center

For more information, contact us at [spc-gsvotc@alamo.edu](mailto:spc-gsvotc@alamo.edu) or at 210-486-2185.

We provide free services to active duty service members, veterans, their families and the community. Call us Monday-Friday (8am-5pm). Visit <https://www.alamo.edu/spc/gsvotc>.

## International Student Services

Find resources for F-1 and M-1 visa holders at <https://www.alamo.edu/spc/international>.

## Library Resources and Services

For more information, contact April Schramm (210-486-2357) or Susan McClellan (210-486-2330).

**Our Website has undergone a face-lift!** Come by and check it out at <https://www.alamo.edu/spc/library>. The Library offers virtual reference services (see Library Virtual Hours). If you need reference assistance, use our ASK US feature and chat service found at the top of our homepage

**Resources:** See our [Distance Education Student Resources Guide](#) and [SPC Coronavirus Resource Guide](#) with resources on all-things-COVID-19, as well as fun activities for families and children.

**Social Media:** See more of St. Philip's College Library on Facebook: <https://www.facebook.com/TheLibraryatSPC> and Twitter: <https://twitter.com/Spclibraryspc>.

**SPC Archives:** We are gathering documentation on how the SPC community is responding to the COVID-19 pandemic, and you can help! If you are keeping a record of your experience working and/or learning remotely, or have any documentation that reflects the current situation, please consider sharing it with the SPC Archives. Contact Rebecca Barnard at 210-486-2583 or [rbarnard3@alamo.edu](mailto:rbarnard3@alamo.edu) to contribute.

## Math Labs

For more information contact Renita Mitchell at 210-486-2607

**Virtual MathWorld:** Remote tutoring services are available for our students in developmental MATH courses, as well as MATH 1314, 1332, 1350, 1351, 1414, 1442, 2412 and 2413. Access Virtual Math World by clicking on the link (provided by your instructor) within your math Canvas course. Here you will find our schedule of Zoom tutoring drop-in sessions. Learn more or rate our services at <https://www.alamo.edu/spc/mathworld> or contact Pete Perez at 210-486-2893 ([pperez198@alamo.edu](mailto:pperez198@alamo.edu)).

## Military Support Services

For more information, contact Betsy Hamilton at 210-486-2610 or email [dst-military@alamo.edu](mailto:dst-military@alamo.edu)

Phone Support at the following numbers: (Monday-Friday from 0800-1700)

General Information	Mrs. Sarai Carpenter	(210) 486-2001	<a href="https://www.alamo.edu/spc/mss">https://www.alamo.edu/spc/mss</a>
Fort Sam Students	Ms. Allison Joubert	(210) 486-2004	<a href="https://www.alamo.edu/fortsam">https://www.alamo.edu/fortsam</a>
Lackland Students	Mr. Javier Barron	(210) 486-7224	<a href="https://www.alamo.edu/lackland">https://www.alamo.edu/lackland</a>
Randolph Students	Mrs. Sarai Carpenter	(210) 486-2001	<a href="https://www.alamo.edu/randolph">https://www.alamo.edu/randolph</a>

**Air Force General Education Mobile (GEM) Program:** St. Philip's College is an original and continuing participating college in the GEM program. Register for pre-approved SPC online courses to complete your CCAF degree. Ask your Air Force Education counselor about GEM! For more information visit [www.alamo.edu/gem](http://www.alamo.edu/gem).

**Military Spouse Scholarship Program (MyCAA):** The My Career Advancement Account Scholarship Program is a workforce development program that provides up to \$4,000 of financial assistance for licenses, certifications, or Associate's degrees to pursue an occupation or career field. To see if you qualify visit [www.alamo.edu/mycaa](http://www.alamo.edu/mycaa).

Please visit <https://www.alamo.edu/spc/mss> for a full list of services and resources available to **active-duty families** on behalf of the Alamo Colleges.

Library only available virtually until February 6th. Visit Library webpage for up-to-date info on hours and to receive virtual services.

### Spring 2022 Virtual Hours

Mon-Thu	7:00 AM - 7:00 PM
Fri	7:00 AM - 5:00 PM
Sat	10:00 AM - 3:00 PM

For more information contact Yolanda Williams at 210-630-4691

We offer financial assistance and training in healthcare, manufacturing and trades, and information technology for eligible residents. We provide financial resources, guidance, and job placement. We can help you achieve your educational and career goals. Visit <https://www.questsa.org/> for more details and apply today!

## Records, Registration, and Transcripts

For more information, contact Tracy Shelton at [tshelton@alamo.edu](mailto:tshelton@alamo.edu).

Visit <https://www.alamo.edu/spc/records> to find enrollment forms or to request transcripts. Incomplete "1" grades are in the [Fall 2021 Academic Calendar](#). To schedule an appointment for Academic Fresh Start, Conditional Admissions, Early Admissions, and more send email to [spc-records@alamo.edu](mailto:spc-records@alamo.edu). Always include your name, banner number, email address, and telephone number. Contact us at 210-212-5266 to let us know how we can help!



## Safe SPACE (Student Advocacy Center)

For more information, contact Advocacy Hotline at (210)486-1111.

We provide resources for food and social services assistance, and possible access to a one-time emergency aid program. For more information, contact Sasha Wilhelm via email at [awilhelm3@alamo.edu](mailto:awilhelm3@alamo.edu). Always provide your name, telephone number, and Banner ID.

**Grab-and-Go Food Pantry for SPC students in  
MLK Location: SLC, Room 102  
SWC Location: ITC, D-143**

To support our students through this COVID crisis, Alamo Colleges District has established Student Emergency Aid to provide emergency resources for students who need temporary assistance. **Follow steps below to apply:**

- Log into the ACES portal using your Username and Password
- Select the 'Student' option from the sidebar menu
- Select the 'Web Services' link
- Select the 'Financial Aid' tab
- Click on 'Federal Emergency Assistance Application' from the list of options
- This will open a DocuSign page.
- Enter your 'Name' and 'Email' in the required fields and click 'Begin Signing'.
- This will initiate an email to be sent to the address you entered. The email will contain the link to the application.

### Important Services and Resources:

- **Emergency Broadband Benefit Program** The Emergency Broadband Benefit Program is a Federal Communications Commission (FCC) program that provides a temporary discount on monthly broadband bills for qualifying low-income households. Visit <https://getemergencybroadband.org/> for more details
- **U.S. Department of Housing & Urban Development:** <https://www.hud.gov/findshelter>; help for rental assistance, and resources for food pantries, health clinics, clothing, and shelter; San Antonio Field Office 210-475-6800 or 210-475-6806; online <http://hud.gov/texas>.
- **Utility and other bills:** City of San Antonio, Bexar County, SAWS and CPS. See Community Assistance Summary at [https://media.wix.com/ugd/49c991\\_598a79d6f020473aba80ea8773381dae.pdf](https://media.wix.com/ugd/49c991_598a79d6f020473aba80ea8773381dae.pdf).

## City of San Antonio Fair Housing/COVID-19 Emergency Assistance Program

San Antonio residents can call 210-207-5910 or 311 for information, or apply online at <https://www.sanantonio.gov/NHSD/Programs/FairHousing>. Eligible residents can get help with:

- Rent or mortgage payments
- Electricity and water bills
- Internet and phone bills
- Groceries, Medicine, Fuel

**New:** Get in-person help with the **Emergency Housing Assistance Program** application (by appointment) from:

- **Texas RioGrande Legal Aid (TRLA)** Ileana Rojas, 210-337-1525, [ehap@trla.org](mailto:ehap@trla.org) (English/Spanish)
- **Domesticas Unidas**, Irasema Cavazos, 1-956-245-2657, [cavazosirasema@gmail.com](mailto:cavazosirasema@gmail.com)  
and/or

COPS/Metro at these church locations:

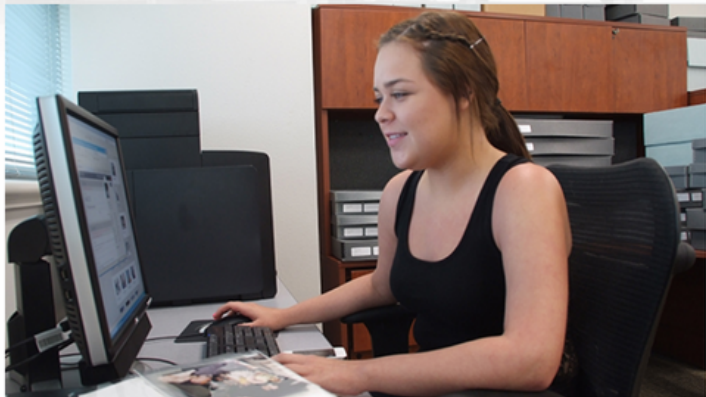
- Divine Providence; Father Ryan Carnecer; [frryancicm@gmail.com](mailto:frryancicm@gmail.com)
- St. Timothy; Natalie; [sttimothyseniorcenter@yahoo.com](mailto:sttimothyseniorcenter@yahoo.com)
- Our Lady of the Angel; Father Bill Kraus; [bill.kraus@capuchins.org](mailto:bill.kraus@capuchins.org)
- Sacred Heart, Maria "Lupita" Valdez, [mgvaldeza63@gmail.com](mailto:mgvaldeza63@gmail.com)

# Scholarship Office

For more information, contact Gloria Hernandez at 210-486-2498. or at [ghernandez@alamo.edu](mailto:ghernandez@alamo.edu)

- **San Antonio Area Foundation:** Robert B. Taylor Scholarship encourages all students to apply (over 90 scholarships available). Visit <https://saafdn.org/students/scholarships/> for more information.
- **Harvey Najim Pathways Scholarship:** Must be graduating from a high school in one of these ISD's. East Central, Edgewood, Harlandale, San Antonio, South San, Southside, Southwest, or Somerset. Pursue degree in Information Technology, Cyber-security, nursing, Respiratory Care. Visit <https://www.alamo.edu/link/c54dc592347746228d97f0a7a8f171e6.aspx> to apply.

## Student Engagement Grants



St. Philip's College is looking for excellent students who want challenging and rewarding extracurricular experiences while pursuing their college course work. The Student Engagement (SEG) Scholarship provides the opportunity to get involved with a special initiative, meeting other students, and developing a network of professional contacts. Financial support is provided to each student. Identify the extracurricular experience you are looking for and contact the SEG Project Director.

Apply Today



ALAMO COLLEGES DISTRICT  
St. Philip's College

Career Readiness & Experiential Learning Services



**GAIN PROFESSIONAL EXPERIENCE  
WHILE WORKING ON CAMPUS**

## SPC Earn & Learn Program

### Earn & Learn Minimum Qualifications:

- *SPC must be student's home campus.*
- *Must be enrolled in at least 6 credits hours for semester.*
- *Must have minimum GPA of 2.75*
- *Must be eligible to work in US.*

### How To Apply:

1. Visit <https://bit.ly/3DZp4ym>.
2. Apply\* to the position.
3. Speak with the Career Readiness and Experiential Learning staff (emails below) for pre-screening and job matching process.

Students can contact Nathan Martinez at [nmartinez324@alamo.edu](mailto:nmartinez324@alamo.edu) or Fernando Rover Jr. at [froverjr@alamo.edu](mailto:froverjr@alamo.edu) to review available positions and receive assistance in applying. Faculty/staff also welcomed to reach out to inquire how to get Earn & Learn position in your department.



## Use your Student ID for free VIA bus rides!

When it comes to helping college students get around town, VIA is acing the test with the amazing U-PASS! U-Pass is a special rider program that provides unlimited bus rides on all regular VIA service, Prímo, VIA Express, VIVA, and VIA Link, **FREE each semester.**



# SPC Health Centers

For more information, contact Russel Adamski at 210-486-2222 (MLK Campus), or Brenda Major at 210-486-7161 (SWC Campus).



## No Insurance? No Problem!

Students of the Alamo Colleges District must first call **210-485-0571** to set up their appointment and financial assistance may be available. Visit <https://alamo.edu/wellness360> for full details and list of student health care services.

## What to expect for the 2022 Flu season, during the COVID-19 Pandemic?

Getting a flu vaccine is more important than ever during 2021-2022 to protect yourself, your family, and your community from flu. A flu vaccine this season can also help reduce the burden on our healthcare systems responding to the COVID-19 pandemic and save medical resources for care of COVID-19 patients.

## What is the difference between Influenza (Flu) and COVID-19?

Influenza (Flu) and COVID-19 are both contagious respiratory illnesses, but they are caused by different viruses. COVID-19 is caused by infection with a new coronavirus (called SARS-CoV-2) and flu is caused by infection with influenza viruses.

## Preventive Steps

The CDC recommends a yearly flu vaccine and COVID-19 vaccine. Avoid close contact with people who are sick, cover cough and sneezes, wash your hands, avoid touching your eyes, and clean and disinfect surfaces and objects. Source: <https://www.cdc.gov/flu/about/index.html>.

## February is Heart Awareness Month:

Did you know high blood pressure (HBP) is a “silent killer”? Now defined as readings of 130 mm Hg and higher (systolic blood pressure) or 80 mm Hg and higher (diastolic measurement), a change from the old definition of 140/90, reflecting complications that can occur at lower numbers.

- Most of the time there are no obvious symptoms.
- Certain physical traits and lifestyle choices can put you at a greater risk for high blood pressure.
- When left untreated, the damage that high blood pressure does to your circulatory system is a significant contributing factor to heart attack, stroke and other health threats.

Read about HBP symptoms, contributing physical traits and lifestyle choices (greater risk for HBP), and damage caused if left untreated (heart attack, stroke and other health threats). Source: <http://www.Heart.org>.

### COVID-19 Testing Site

Effective Monday, January 3, 2022 all employees and vendors' employees who are scheduled to work regularly on site will be required to be screened for COVID-19 on a weekly basis, but screenings will be optional for students. Screenings (via PCR Test) will be available several days each week at each of our colleges and DSO locations. Go to [alamo.edu/COVID-screening](http://alamo.edu/COVID-screening) to pre-register.

# Student Life

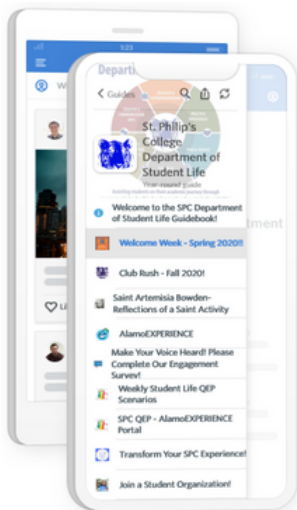
For more information contact Dr. Angela McPherson Williams at 210-486-2090 or Paul Lede at 210-486-2581

Student Life provides engaging activities that enhance the college experience at St. Philip's College. Visit [AlamoEXPERIENCE](http://AlamoEXPERIENCE) to review all available activities and student organizations!



## QEP: Quality Enhancement Plan

Complete the “What Do You Do?” Ethical Decision- Making scenario for the week by clicking the logo above.



## Get the Guide on your mobile device

Download the Guide on mobile to access up-to-date information, track sessions, interact with attendees, view photos, and more!

### GET THE GUIDEBOOK APP

Send a text with a link to the Guide or visit this page on your mobile device.



Text input field for phone number and a "Text me the link!" button.

Standard text message rates apply



# Student Life Events & Activities



- Event:** **Black History Reflection Activity (Online)**  
**Date/Time:** February 1-18 Ongoing  
**Summary:** How can past accomplishments of African-American inspires this generation to make a positive impact for the future? To register, click on the link [Black History Month Reflection Activity - AlamoEXPERIENCE \(campuslabs.com\)](#)
- Event:** **Men's Basketball Tryouts**  
**Date/Time:** February 1 6:00 pm – 8:00 pm  
**Location:** Health and Fitness Center (HFC), Gym  
**Summary:** Calling all Ballers! We need your passion and energy on this year's team! Students with all skill levels are encouraged to try out.
- Event:** **Spirit Day at SPC and on Instagram**  
**Date/Time:** February 2, 9, 16, and 23 11:00 am – 1:00 pm  
**Location:** Turbon Student Center, Lobby (MLK) or Building 1, Crossroads (SWC)  
**Summary:** Wear your favorite St. Philip's shirt or wear school colors – royal blue and white. Like our page and post your picture on Instagram [Spirit Day! @ MLK Campus - AlamoEXPERIENCE \(campuslabs.com\)](#)
- Event:** **Diversity, Equity, & Inclusion: Bystander Intervention (Online)**  
**Date/Time:** February 17 1:15 pm – 2:15 pm  
**Summary:** Hey Tigers! Join students, faculty, and staff for a discussion on Equality in the Workplace. To register, click on the link: [Diversity Equity and Inclusion: Bystander Intervention - AlamoEXPERIENCE \(campuslabs.com\)](#)
- Event:** **Lunch and Lead Session (Online)**  
**Date/Time:** February 18 9:30 am – 10:30 am  
**Location:** Turbon Student Center (TSC), Room 216  
**Summary:** Student Leaders, please join us as we discuss leadership, student organizations and AlamoExperience. To register, click on the link, [Lunch and Lead - AlamoEXPERIENCE \(campuslabs.com\)](#)
- Event:** **We All Have Bias: How to Increase Your Awareness & Stand Up for Inclusivity**  
**Date/Time:** February 22 3:00 pm – 3:30 pm  
**Location:** [Student Lingo](#) (Online)  
**Summary:** This event will offer a \$500 scholarship awarded based on a specific diversity challenge that will be presented during the webinar. Join the presenter as she shares both key diversity, equity, and inclusion concepts, as well as strategies and skills to be a change agent and upstander when you experience or see exclusion in your community.
- Event:** **Wellness Wednesday: Your Heart and You/Vision Care (Online)**  
**Date/Time:** February 23 2:00 pm – 3:00 pm  
**Summary:** Meet with your SPC Campus nurse and talk about your wellness! This month's topic of discussion will be on your heart and you and vision care! To register, click on the link [Wellness Wednesday: Your Heart and You/Vision Care - AlamoEXPERIENCE \(campuslabs.com\)](#)

## Tutoring Services & Service Learning

For more information, contact Elizabeth Castillo at 210-486-2473

## Tutoring Services

The Tutoring and Technology (TNT) Center provides online support services for students and faculty engaged in a variety of distance learning formats to ensure opportunities for student success. TNT offers FREE online professional tutoring through Brainfuse to St. Philip's College students in numerous areas for help with some of their toughest courses and subjects! [Visit https://bit.ly/SPCtutoring](https://bit.ly/SPCtutoring) for more details.

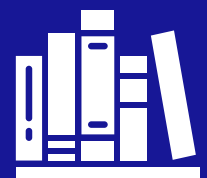
## Laptop and Internet Hotspot Checkout Available to Students



Contact Technology Services 210-486-2777 or via email at [spc-helpdesk@alamo.edu](mailto:spc-helpdesk@alamo.edu) for more details.

To get help for Network or ACES Password issues contact Alamo Colleges District Support Central, 210-485-0555

## Book Loan Program



Visit <https://bit.ly/3w8WS9v> to review your options with the Book Loan Program before purchasing your book!

# Communications & Learning Department Tutoring Services

Learn how to analyze your writing assignments, improve your composition process, and master reading comprehension. Tutoring services are available in ENGL, SPCH, EDUC, SDEV, INRW and other Reading and Writing intensive courses.

## Information and locations:

### [Rose R Thomas Writing Center](#)

Location: Clarence Windzell Norris (CWN), Room 317  
 Contact: San Juan San Miguel  
 Email: [ssan1@alamo.edu](mailto:ssan1@alamo.edu)  
 Phone: 210 486-2625

### [Integrated Reading and Writing \(INRW\) Lab](#)

Location: Clarence Windzell Norris (CWN), Room 413  
 Contact: Alicia Dominguez  
 Email: [adominguez@alamo.edu](mailto:adominguez@alamo.edu)  
 Phone: 210 486-2868



## Veterans Affairs

For more information, contact Veronica Griego at 210-486-2540

### Veterans Affairs Academic Advisors

(A-Ga) Vincent Garcia [vgarcia365@alamo.edu](mailto:vgarcia365@alamo.edu) 210-486-2521  
 (Gb-N) Alicia Stolte [astolte2@alamo.edu](mailto:astolte2@alamo.edu) 210-486-2539  
 (O-Z) Tony Gable [lgable@alamo.edu](mailto:lgable@alamo.edu) 210-486-2521

Reach us at 210-486-2111 or [spc-vetaffairs@alamo.edu](mailto:spc-vetaffairs@alamo.edu). See our full list of services and helpful contacts at <https://www.alamo.edu/spc/veteran-affairs>.

## Financial Literacy Program

St. Philip's College is dedicated to providing students with the financial education and training necessary to make informed financial decisions.

Visit <https://bit.ly/spcFLC> for more details about the financial literacy resources available to you!

For more information, contact  
Liz Castillo at (210)486-2473



**“EARN WHILE YOU LEARN”**



- ✓ Flexible Work Schedule
- ✓ Earn Tax Free Compensation
- ✓ Friendly, Laid Back Environment
- ✓ Networking and Learning Opportunities
- ✓ Earn Volunteer Hours
- ✓ Start Building Your Resume

The San Antonio Vet Center is currently looking for eligible students to work at our **NORTHEAST** location at 9504 N. Interstate 35 Ste. 214 SA, TX 78233.

If you're a 3/4-time or full-time student in a college degree, vocational, or professional program, and are using a **VA Education Benefit** you can “earn while you learn” with a VA work-study allowance.

#### VA Educational Benefits include:

- Chapter 30 (Montgomery GI Bill – Active Duty)
- Chapter 31 (Vocational Rehabilitation)
- Chapter 32 (Veterans Educational Assistance Program)
- Chapter 33 (Post-9/11 GI Bill)
- Chapter 35 (Dependents Educational Assistance)
- Chapter 1606 (Montgomery GI Bill – Selected Reserve)
- Chapter 1607 (Reserve Educational Assistance Program)
- Transfer of Entitlement Program (Parent or Spouse entitled to benefits)

**CONTACT US TODAY! :** (210) 650-0422

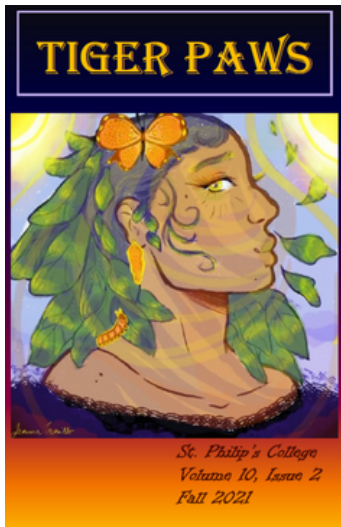
[Jennifer.Echeverry@va.gov](mailto:Jennifer.Echeverry@va.gov) or [Raymond.Kaloplastos@va.gov](mailto:Raymond.Kaloplastos@va.gov)

## Career Success After Service With



Heroes Linked is a nonprofit employment program, completely free and online. Heroes Linked connects those serving, Veterans, their spouses and Gold Star families with a national network of volunteer Advisors - many of whom are Veterans. They are professionals and experiences in their respective industries.





**Tiger PAWS Literary Art Journal:** Get published and win prizes!  
Be an editor and compete for scholarships!

Tiger PAWS literary art journal is seeking students to submit writing and artwork or sign up to be an editor for the Spring 2022 edition.

Editorial Staff deadline is Friday, February 25, 2022

Submission deadline is Sunday, March 6, 2022

[CLICK HERE](#) to learn more and to review previous Tiger PAWS issues.

**If you are experiencing any problems, feel free to reach out to any of these Student Support offices:**

Disability Services	210-486-2199	Konnie Harper-Thompson
Career Experience	210-486-2468	Nathaniel Martinez
First Year Programs	210-486-2473	Liz Castillo
Tutoring and Technology Center	210-486-2517	Jared Boggs
Financial Literacy Services	210-486-2140	Enida Rehome
Student Advocacy Center	210-486-2827	Sasha Wilhelm
Counseling Services	210-486-2378	Eitandria Tello
Student Conduct/Title IX	210-486-2741	John Martin
Student Life	210-486-2090	Dr. Angie Mac