

2008-2009

Fact Book



**ALAMO
COLLEGES**

ST. PHILIP'S COLLEGE

Institutional Planning,
Research & Development
1801 Martin Luther King Dr.
San Antonio, TX 78203
(210) 486-2369

[www.accd.edu/spc/admin/ipr
dept/default.aspx](http://www.accd.edu/spc/admin/ipr/dept/default.aspx)

Preface.....	v
COLLEGE PROFILE	
History.....	2
Mission Statement	3
Degree and Certificate Programs	
Associate of Applied Science Degrees	4
Associate of Health Sciences Degrees	5
Associate of Arts Degrees.....	5
Certificate of Completion	6
Advanced Technical Certificates	8
Marketable Skills Achievement Certificates.....	8
Enhanced Skills Certificates.....	8
Technical Certificate of Completion	8
High School Transition Programs.....	9
First Year Experience College	10
Transfer Programs	11
Accreditation & Affiliations	12
Organizational Charts	
St. Philip's College.....	13
Academic Affairs.....	14
Student Success	15
College Services	16
Divisions	
Arts & Sciences	17
Applied Science & Technology.....	18
Health Science	18
Continuing Education and Extended Services.....	19
Southwest Campus.....	20
Institutional Resources	
Center for Learning Resources.....	22
Instructional Technologies	23
Instructional Innovation Center	23
Physical Facilities	
Acreage/Square Footage.....	24

Building Description.....	27
---------------------------	----

ENROLLMENT TRENDS

Credit Programs

Fall Semesters 1999 – 2008	31
Spring Semesters 2000 – 2009.....	31
Summer Session I 2000 – 2009.....	32
Summer Session II 2000 – 2009	32
By Classification (Summary).....	33
By Classification (Percentage).....	34
Gender	35
Ethnicity.....	35
Age.....	36
Part-Time vs. Full Time	38
Day vs. Evening	38
Divisions	39
Contact Hours	40
Distance Learning	41
Developmental Education.....	41
Continuing Education – Contact Hours	42
Continuing Education – Unduplicated Enrollment	43

STUDENT PROFILE

General Information

Gender, Ethnicity, Age, Major, Hours Enrolled, Day vs. Evening	45
<i>Top Ten</i>	
Arts & Science Majors	46
Applied Science & Technology Majors	46
Health Sciences Majors	47
Counties of Residence	47
States of Residence.....	48
Feeder High Schools	48
Feeder Zip Codes of Residence	49
Student Objective in Attending St. Philip's College	50
Intended Duration of Enrollment	51

Academic Experience on Entry	52
Student Employment Status	53
Financial Aid Awards	54
Registration.....	55

Academic Achievement

Graduation Degrees & Certificates Awarded.....	56
Graduates by Ethnicity	56
Degree & Certificate Trends.....	57
Grade Distribution	58
Grade Distribution Trends	58
Fall to Fall Retention by Ethnicity	59
Retention of First-Time, Full-Time Degree-Seeking Freshmen by Ethnicity	60
Retention by Department and Self-Declared Major	61

PERSONNEL PROFILE

Employee Profile

Full Time Employment by Gender & Classification.....	71
Full Time Employment by Ethnicity & Classification.....	71

Faculty Profile

Gender, Ethnicity, Faculty Rank, Highest Degree Earned.....	72
By Division	73
By Department	73

FINANCIAL PROFILE

Tuition and Fees	75
Budget, FY 2008-2009	76

PREFACE

The St. Philip's College 2008-2009 Fact Book is a compilation of statistical and descriptive information concerning St. Philip's College, its programs, enrollments, students, personnel and financials.

The document is designed to provide College administrators, faculty, the community and the Board of Trustees with accurate and consistent information about the college. 'Enrollment Trends' spans five to ten years. Other sections, such as 'Student Profiles', contain snapshot data of a particular population in a particular semester. Descriptive data is found in 'College Profile' and concerns programs and organizational structure.

Administrators, faculty and staff members will find this a good reference document for planning, preparing reports, and writing grant proposals.

Whenever possible, data contained herein comes from 'static' databases, i.e., from the standard reports submitted to the Texas Higher Education Coordinating Board (THECB), referred to as 'twelfth-class-day reported data'. This provides consistency over time and coincides closely with college data stored at the THECB for reimbursement purposes. Other data comes from 'live' databases in which periodic updating may take place and may change slightly depending upon the date the report was run. In all cases, the data source is shown under each table or chart.

As you use this document, you are encouraged to offer suggestions for improvement of future issues.

Mecca Salahuddin
 Director
 Institutional Planning, Research and Effectiveness

Contributors:

Compilation and Design:
 Elizabeth Ehrler
 Research Specialist

Data Resource:
 Mecca Salahuddin
 Director of Institutional Research
 & Effectiveness

Data Resource:
 Rhonda Johnson
 Statistical Research Specialist

St. Philip's College
 1801 Martin Luther King Dr.
 San Antonio, TX 78203-2098
 (210) 486-2369

Planning, Research & Effectiveness Department

<http://www.accd.edu/spc/admin/iprdept/default.aspx>

COLLEGE PROFILE

History	2
Mission Statement	3
Degree and Certificate Programs	
Associate of Applied Science Degrees	4
Associate of Health Sciences Degrees	5
Associate of Arts Degrees.....	5
Certificate of Completion	6
Advanced Technical Certificates	8
Marketable Skills Achievement Certificates.....	8
Enhanced Skills Certificates.....	8
Technical Certificate of Completion	8
High School Transition Programs.....	9
First Year Experience College	10
Transfer Programs	11
Accreditation & Affiliations	12
Organizational Charts	
St. Philip's College	13
Academic Affairs	14
Student Success	15
College Services	16
Divisions	
Arts & Sciences	17
Applied Science & Technology.....	18
Health Science	18
Continuing Education and Extended Services.....	19
Southwest Campus.....	20
Institutional Resources	
Center for Learning Resources.....	22
Instructional Technologies	23
Instructional Innovation Center	23
Physical Facilities	
Acreage/Square Footage.....	24
Building Description.....	27



Historical Sketch

Bishop James Steptoe Johnston, the son of a former slave owner and a member of the St. Philip's Episcopal Church of the West Texas Diocese, founded St. Philip's College in 1898. The 111-year-old school, which opened on March 1, 1898, began as a sewing class for black girls with fewer than 20 students in a house located in the area known today as the La Villita Historical Arts Village in downtown San Antonio.

Artemisia Bowden, a teacher and daughter of a former slave, later assumed leadership of the school. Under the direction of Miss Bowden, over the ensuing 52 years, St. Philip's underwent monumental transformation, evolving from parochial day school to industrial school to a fully accredited two-year college offering a diverse curriculum. Changes included a move in 1917 from the school's original site to a new location just east of downtown, and an affiliation with San Antonio College and the San Antonio Independent School District in 1942 that marked the end of the college's era as a private institution.

Today, St. Philip's College is a comprehensive multi-campus institution of the Alamo Colleges, joining four other colleges – San Antonio College, Palo Alto College, Northwest Vista College and Northeast Lakeview College – in meeting the educational needs of San Antonio's growing and diverse community.



A nationally unique institution, St. Philip's College has the distinct designation as a Historically Black College and Hispanic Serving Institution and is the only college in the nation with this federal designation.

With an enrollment of nearly 10,000 credit students and 6,000 non-credit students, St. Philip's is among the oldest and most diverse community colleges in the nation, and one of the fastest growing in Texas.

Dr. Adena Williams Loston serves as the 14th President of St. Philip's College. She assumed the reins on March 1, 2007, on the occasion of St. Philip's 109th anniversary.

For more information about St. Philip's College, visit www.alamo.edu/spc.

MISSION STATEMENT

St. Philip's College, founded in 1898, and is a comprehensive, public community college whose mission is to provide a quality educational environment, which stimulates leadership, personal growth and a lifelong appreciation for learning.

As a Historically Black College and a Hispanic Serving Institution, St. Philip's College strives to be an important force in the community, responsive to the needs of a population rich in its ethnic, cultural, and socio-economic diversity. St. Philip's College seeks to create an environment fostering excellence in academic and technical achievement while expanding its commitment to opportunity and access.

The College takes pride in its individual attention to students in a flexible and sensitive environment. As a dynamic and innovative institution, St. Philip's College values the role of creative and critical thought in preparing its students, campus and community to meet the challenges of a rapidly changing world.

The College fulfills its mission by providing:

- ∂ General education courses in arts and sciences.
- ∂ Transfer education for students desiring to attend a senior institution.
- ∂ Developmental courses that improve the basic skills of students whose academic foundations need strengthening.
- ∂ Applied science and technical programs designed to prepare students for employment or for the updating of skills.
- ∂ Special occupational training and upgrading programs for business, industry and government.
- ∂ Continuing education programs for occupational or cultural enrichment.
- ∂ Counseling and guidance designed to assist students in achieving their educational and professional goals.
- ∂ Educational support services that include library services, tutoring, open-use computer labs, and a writing center.
- ∂ Services and appropriate accommodations for special needs individuals.
- ∂ Quality social, cultural and intellectual enrichment experiences for the community.
- ∂ Opportunities for participation in community research and economic development.

Approved and Adopted November 1994

DEGREE AND CERTIFICATE PROGRAMS

Associate of Applied Science Degrees

1. Accounting Technician
2. Accreditation Leadership
3. Administrative Office Technology
4. Air Conditioning and Heating
5. Aircraft Technician Airframe
6. Aircraft Technician Power plant
7. Automotive Technology
8. Baking and Pastry Arts
9. Biomedical Equipment Technology
10. Business Management and Technology
11. CNC Manufacturing Technician
12. Collision/Refinishing Technician
13. Computer Aided Drafting (Architectural)
14. General Motors Automotive Service Educational Program (ASEP)
15. Health Information Technology
16. Home Building Technology
17. Hospitality Event Management
18. Hotel Management
19. Industrial Maintenance Management
20. Invasive Cardiovascular Technology
21. Language and Literacy in Preschool
22. LVN to ADN Mobility Program
23. Medical Laboratory Technician
24. Network Administrator
25. Network Security Administrator
26. Occupational Therapy Assistant
27. Physical Therapist Assistant
28. Power Generation and Alternative Energy
29. Precision Metal Workers: Manufacturing Operations Technician
30. Radiography Technologist
31. Refrigeration Technology
32. Respiratory Care Technology
33. Restaurant Management
34. Web Developer
35. Welder/Welding Technologist
36. Computer Maintenance Technology with Network Specialization
37. Computer Maintenance Technology
38. Construction Business Management
39. Culinary Arts
40. Desktop Support Specialist
41. Diagnostic Medical Sonography
42. Diesel Construction Equipment Technician
43. Diesel/Light to Heavy Truck Technology
44. Early Childhood Studies
45. Electrical Trades

Associate of Health Science Degrees

1. Biology
2. Chemistry
3. Earth Sciences and Natural Energy Resources
4. Environmental Science
5. General Science
6. Health Professions Degree
7. Physics
8. Pre-Dentistry
9. Pre-Medicine
10. Pre-Nursing
11. Pre-Optometry
12. Pre-Pharmacy

Associate of Arts Degrees

1. Business Administration
2. Ceramics and Sculpture
3. Comic Book Illustration
4. Computer Science
5. Criminal Justice
6. Design
7. Digital Media
8. Drawing and Painting
9. Integrated Arts
10. Kinesiology
11. Liberal Arts
12. Mathematics
13. Music
14. Philosophy
15. Theater Performance
16. Economics
17. English
18. Foreign Language (Spanish)
19. General Studies
20. Government
21. History
22. Pre-Engineering
23. Pre-Social Work
24. Psychology
25. Sociology
26. Speech
27. Stage Craft
28. Statistics
29. Teacher Education
30. Humanities

Certificate of Completion

1. Advanced Cisco System Networking
2. Air Conditioning and Heating
3. Aircraft Mechanic Airframe
4. Aircraft Mechanic Power Plant
5. Aircraft Structures Mechanic
6. Aircraft Turbine Mechanic
7. Architectural Drafting 3D Enhanced Skills
8. Automotive Technology Certificate
9. Avionics
10. Baking Principles
11. Brake and Front End Specialist
12. Building Trades
13. Child Development Associate National Credential (CDA)
14. Cisco Systems Networking
15. CNC Operator
16. Coding Specialist
17. Collision Technology
18. Comp. TIA Linux+ Certification Preparation
19. Computer Aided Drafting Technician
20. Computerized Accountant Technician
21. Culinary Studies
22. Data Driven Web Developer
23. Desktop Support Specialist
24. Diesel/Heavy Equipment Technology
Diesel/Light to Heavy Duty Truck
Transmission Specialist
25. Diesel/Light to Heavy Truck Technology
26. Document Coding Specialist
27. Early Childhood Studies
28. Electrical Trades
29. Electronics Assistant
30. Entrepreneurship
31. Ford Maintenance and Light-Duty
Repair
32. General Medical Transcripts
33. Health Information Specialist
34. Heating and Air Conditioning Specialist
35. Histological Technician
36. Home Building
37. Hotel Limited Service Property
Management
38. Legal Word Processing Specialist
39. Machinist/Machine Technologist
40. Manual/Semi-Manual Inert Gas
Welding GTAW/GMAW
41. Microsoft Office Specialist (MOS)
42. Network Professional
43. Network Professional: Server +

Certificate of Completion Continued

44. Network Systems Technician
45. Office Assistant
46. Payroll Clerk
47. Performance Specialist
48. Plastics Certificate
49. Plumber's Helper
50. Plumbing Trades
51. Power Generation and Alternative Energy
52. Precision Metal Workers: CNC Tool Operator
53. Precision Metal Workers: Manufacturing Operations Maintenance Assistant
54. Precision Metal Workers : Operations Maintenance Mechanic
55. Precision Metal Workers: Manufacturing Skills trade Helper
56. Refinishing Technology
57. Refrigeration
58. Specialty Medical Transcripts
59. Structural/Pipe Layout
60. Surgical Technology
61. Transmission Specialist
62. Vocational Nursing
63. Web Designer: Level I
64. Web Developer

Advanced Technical Certificates

- Department of Allied Health
- Department of Radiography
- Long Term Nursing Home Administration
- Diagnostic Medical Sonography

Marketable Skills Achievement Awards

- Air Conditioning Systems – Installation MSAC
- Air Conditioning Systems – Service MSAC
- Beginning Accounting Technician
- Data Entry Specialist
- Diesel/Light to Heavy Truck Technology Mechanic Helper I MSAA
- Diesel/Light to Heavy Truck Technology: Mechanic Helper II MSAA
- Certified Medical Receptionist
- Power Generation and Alternative Energy MSAC
- Project Team Leader

Enhanced Skills Certifications

- Computer Tomography
- Magnetic Resonance Imaging

Technical Certificate of Completion

- Administrative Office Assistant
- Diesel/Light to Heavy Truck Technology Brake and Front End Specialist
- Long Term Care Nursing Home Administrator

High School Transition Programs

The transition from high school to college is often a difficult process, and the type of preparation needed for this change varies among students. To meet these challenges, the College utilizes several approaches:

- * College Partnerships
- * The Dual Credit Program
- * Tech-Prep
- * First Year Experience Center

* College Partnerships

College Partnerships, established in January 2002, is responsible for coordinating/scheduling classrooms, campus conference rooms, and buildings for non-academic purposes and coordinates community events held on campus. St. Philip's strives to enhance the partnerships that currently exist and works enthusiastically to develop new ones.

St. Philip's holds partnerships with the following: Hispanic Chamber of Commerce; the Alamo City Chamber of Commerce; the Greater San Antonio Chamber of Commerce; the George Gervin Youth Center; the East Area Business Council; University Health System; Healy Murphy Center; City of San Antonio; Community of Churches for Social Action; Communities in Schools; Southwest Texas State University; and Samuel Clemens and Sam Houston High Schools.

* Dual Credit Program

The Dual Credit Program enables eligible high school students to earn college credit while they are completing their high school requirements. St. Philip's College waives tuition for dual credit eligible high school students in articulated courses for which they receive joint high school and community college credit.

A successfully completed dual credit course earns the student college credit which may be applied toward an associate's degree, certificate of completion, and/or may transfer to other colleges or universities. Students should verify with the colleges they plan to attend after graduation that courses will apply toward the degrees sought and, if applicable, that courses will transfer.

* Tech-Prep

St. Philip's College has entered into approved Tech-Prep articulation agreements with several area high schools in the areas of Automotive Technology, Business Information Solutions, Hotel Management, Restaurant Management, Tourism, and Culinary Arts and Nursing. Agreements in additional Tech-Prep areas of study are forthcoming pending approval by the Texas Education Agency (TEA), and the Texas Higher Education Coordinating Board (THECB).

First Year Experience College

The First Year Experience Center offers special services and assistance first year students. The purpose of the program is to retain participating students beyond their critical first year of college where the majority of dropouts occur. Through extensive one-on-one student services and academic support, students are helped to adjust to college life and acquire the skills needed to become successful students.

The following is a list and a brief description of the programs available to student that enroll in the program:

Fresh X Summer Program

The Fresh X Summer Program is a 4 week Accuplacer refresher course to help incoming graduating seniors raise their Accuplacer scores in Math, Reading and English. This course also offers an orientation to college courses to help incoming students transition from high school to college.

Workshop Series

Workshops designed to give students the basic tools and foundations for college success via classroom activities, lectures, labs, discussions, and guest speakers.

Early Alert Program

St. Philip's College's Early Alert Program was designed to provide faculty members the opportunity to alert a student and College staff to the student's need for effective intervention. The earlier the intervention by a faculty member, the sooner the College staff can bring a broad array of support service to bear on the student's behalf. Early Alert can have a positive effect on the student's overall success, thus enhancing their retention and graduation.

Lap Top and Book Loan Program

The Equity Center Textbook Program has a limited number of textbooks available to loan to students for the duration of the semester. Books must be returned to the Equity Center by the end of the semester or a fine will be assessed, and a hold will be placed on the student's record (barring any registration activity).

The Lap top Loan Program also has a limited number of laptops available for loan on a semester basis. To be eligible a student must: be in their first year of college, hold at least a 2.5 cumulative GPA and be in academic good standing, have no holds on their record and be cleared by the Learning Resource Center and the First Year Experience Center.

Transfer Programs

Transfer Center

The Transfer Center provides students with current information on many colleges and universities. The Transfer Center Professional Staff are eager to assist students who are planning to continue their goals beyond the community college. The mission of the Transfer Center is to assist students in reaching their long range educational and vocational goals while ensuring that the transition from St. Philip's College is a seamless process. The Transfer Center assist students who are planning to transfer to another college or university by providing them with information regarding criteria for admission, selectivity of specific colleges, on and off-campus housing, tuition, financial aid and scholarship information and when and where one can apply.

Joint Admission Agreement (2+2)

The Joint Admission Agreement is a structured outline or degree plan for a specific major and catalog year from a 4-year college or university that specifies courses that can be completed while at a community college. The first two years of this plan outlines courses which can be taken at the community college (listed with community college course numbers). A student can complete any or all of the first two years of the plan prior to transferring to the senior institution.

This is an agreement between a two-year and four-year institution that allows the two-year student to declare his/her intent to transfer to that specific 4-year college or university. The student is considered "provisionally" admitted to the four-year college while attending the community college. This qualifies the student for a variety of services at the senior institution, depending on the college, and assures a smooth transition once the decision to transfer is made. The student will later be officially admitted at the time of transfer, provided that the student meets the transfer GPA and provides an updated transcript at the time the student plans to transfer. The transfer institution usually provides a transfer guide or 2+2 degree plan that the student should follow while at the community college.

If a student completes the entire first two years of any such 2+2 program with a minimum of 60 applicable degree hours, he or she will have satisfied requirements for an applicable Associate of Arts degree in Liberal Arts. These hours of credit must include 15 hours in core curriculum areas as required by the Southern Association of Colleges and Schools, which must include at least one course each in the following areas:

- Humanities/Fine Arts
- Social/Behavioral Sciences
- Natural Science
- Mathematics

2+2 Plans:

- ∂ Capella University
- ∂ Our Lady of the Lake University
- ∂ Regis University
- ∂ St. Mary's University
- ∂ Texas A&M Corpus Christi
- ∂ Texas A & M University-San Antonio
- ∂ University of the Incarnate Word
- ∂ University of the Incarnate Word Pre-Pharmacy
- ∂ University of Texas at San Antonio
- ∂ University of Texas at Brownsville and Texas Southmost College
- ∂ University of Texas Health Science Center-Nursing
- ∂ Wayland Baptist University
- ∂ Western Governors University
- ∂ Wiley College

Accreditation & Affiliations

St. Philip's College is accredited by the Commission of Colleges of the Southern Association of Colleges and Schools to award degrees in Associate of Arts & Science, Associate of Health Sciences, Associates of Applied Science & Technology, along with Certificates of Completion.

SACS

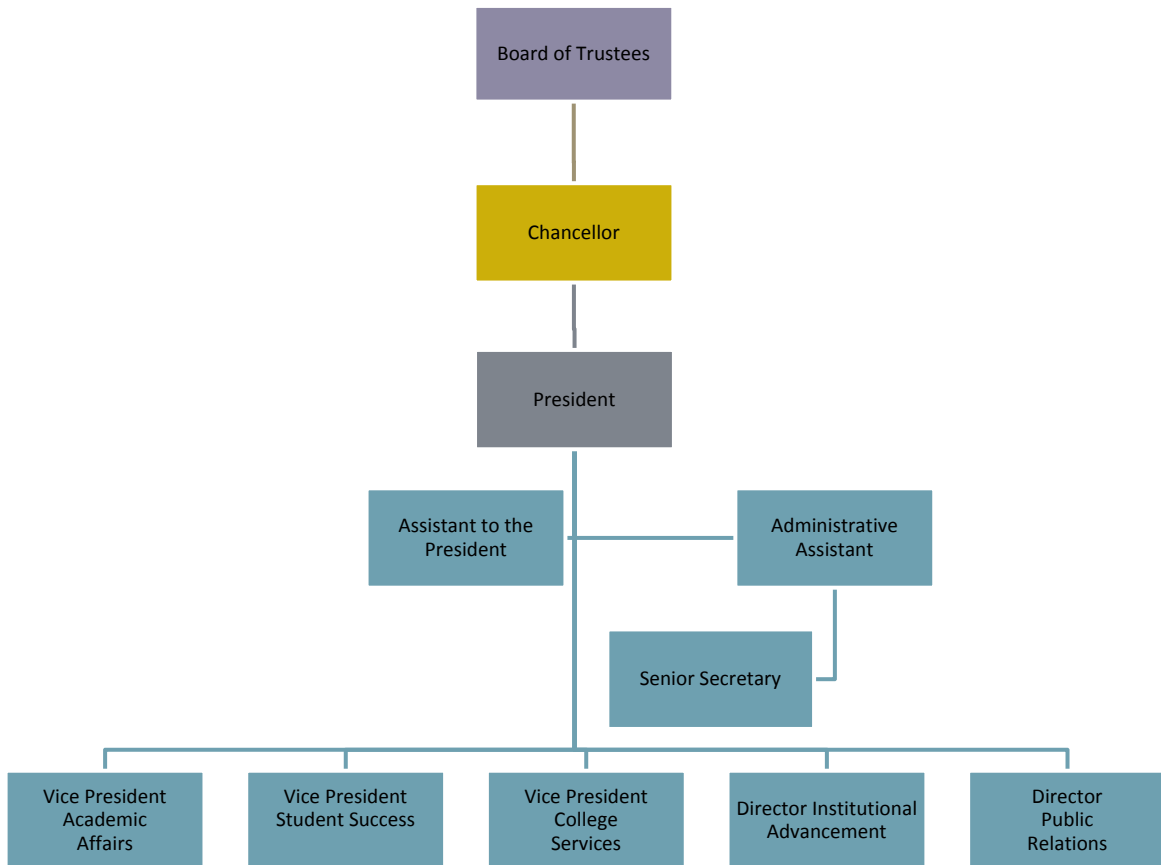
1866 Southern Lane
 Decatur, GA 30033-4097
 (404) 679-4501
www.sacscoc.org

St. Philip's College is also approved and accredited by the Texas Higher Education Coordinating Board, National Accrediting Groups for Allied Health and Nursing Programs and the Federal Aviation Administration.

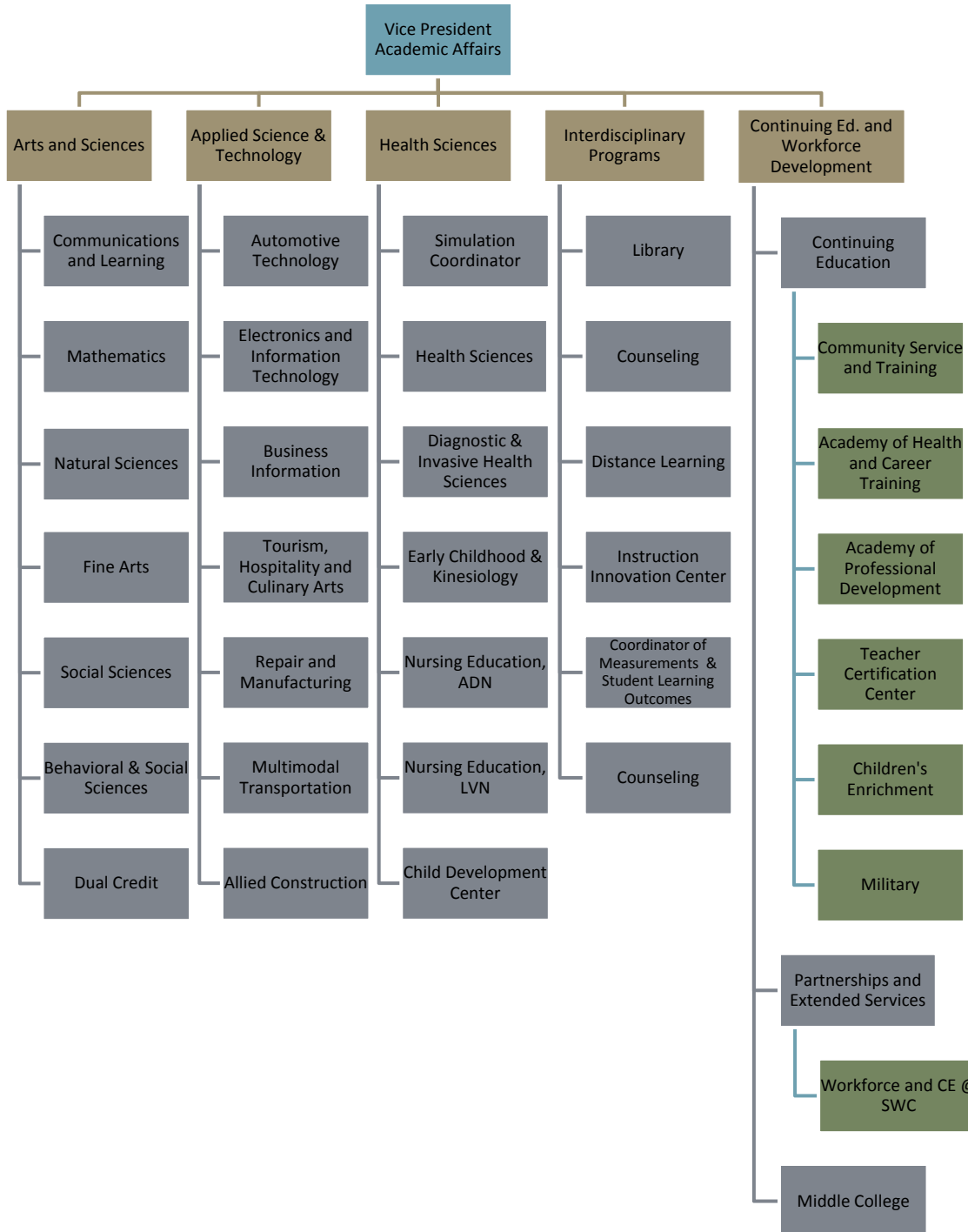
Member of:

American Association of Community and Junior Colleges
 Texas Junior College Association
 Texas Public Community and Junior College Association
 Texas Community College Teachers Association
 The Association of Texas Colleges and Universities

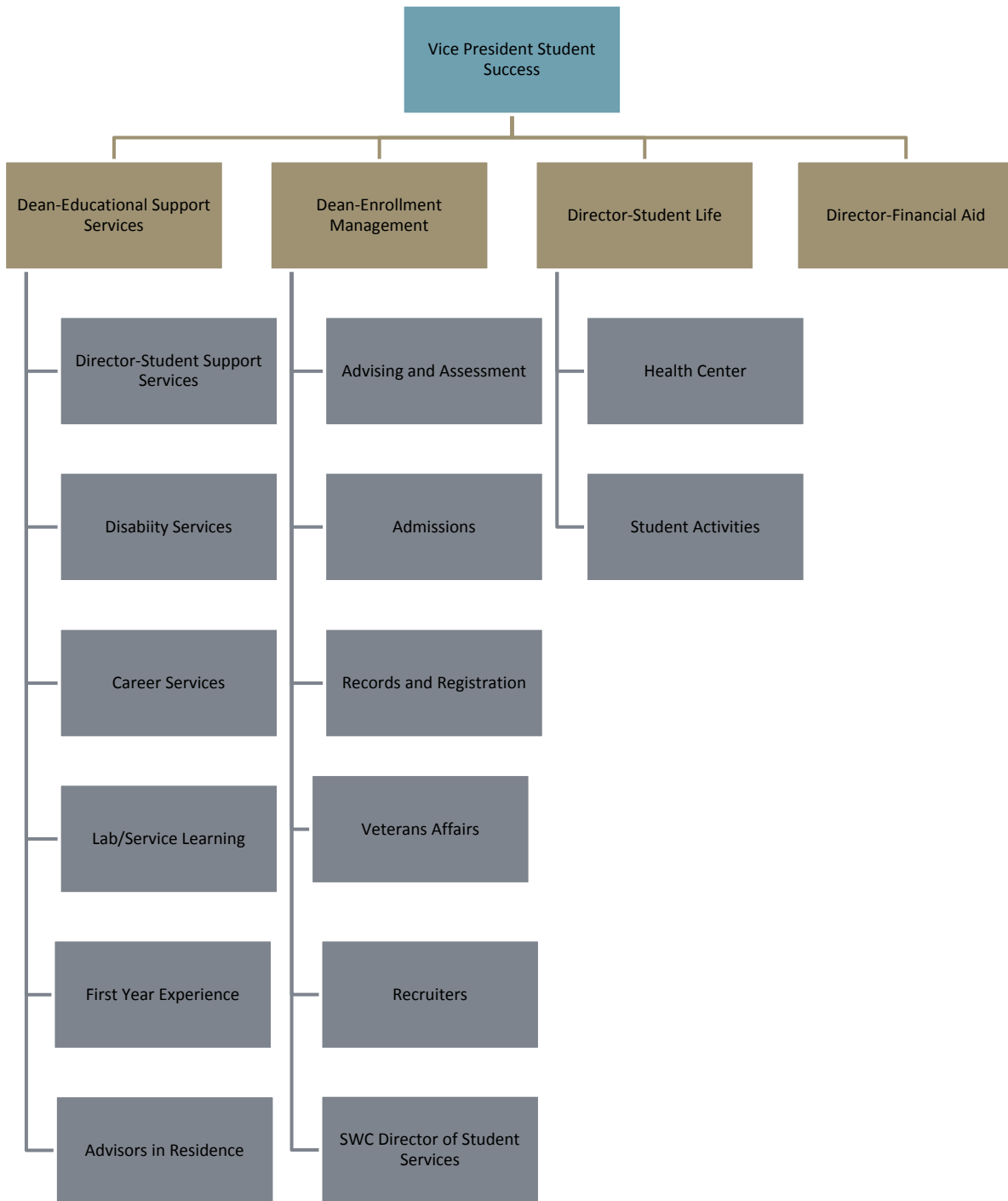
St. Philip's College



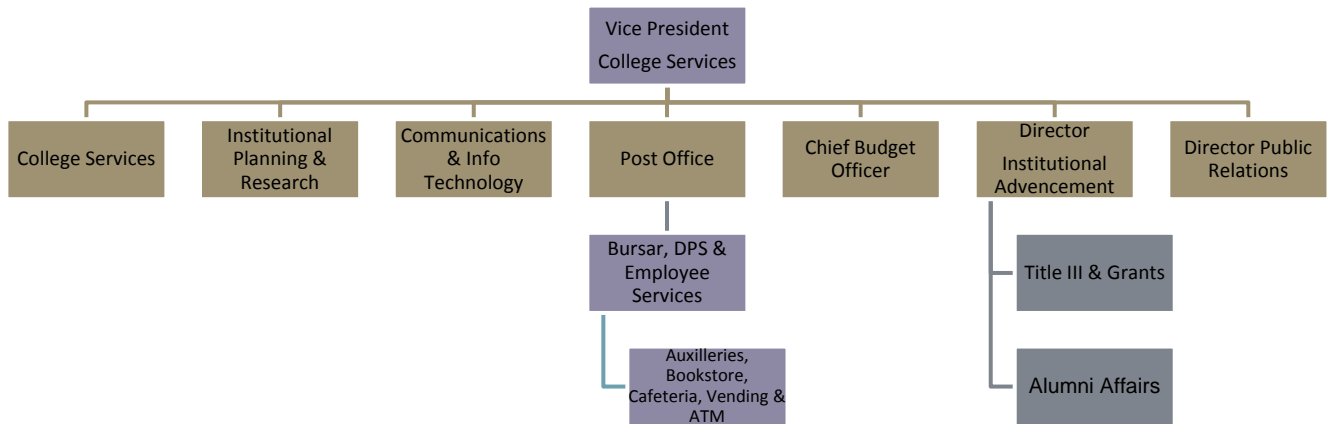
Academic Affairs



Student Success



College Services



Divisions

Arts & Sciences

Programs in the Division of Arts and Sciences are designed to assist students in developing their analytical reasoning ability, their communication and human relations skills, and their perception of the world. The division aims to provide students with an educational environment that stimulates creativity, critical thinking, personal growth, and a lifelong appreciation of learning.

The Division includes seven multi-disciplined departments: Behavioral Sciences; English and Speech; Fine Arts; Mathematics; Natural Sciences; Reading, Education & Foreign Languages; and Social Sciences. Together, the departments offer forty-five degree programs, including a distance learning Liberal Arts degree option with courses available by telecourse and/or Internet. A variety of instructional delivery systems serve students morning, afternoon, evenings, and weekends with real time and distance learning options.

The Division manages developmental education in Reading, English, and Mathematics. Special initiatives include the Bridges Program that offers instruction to assist high school students with successful completion of the THEA Test. Other partnerships with public middle and high schools include the Dual Credit Program and the Natural Sciences Tex-Prep Pre-Engineering Program. In addition, the Fine Arts Music Advancement Program offers scholarships for music instruction to middle school students in SAISD.

Co-curricular activities organized by the departments enhance student learning: Fine Arts musical recitals, art exhibits, and theatre productions, as well as, the publication of the literary journal, *The Artemisian Review* by the Communications and Learning Department and lectures and debates sponsored by Social and Behavioral Sciences, and lectures and science fairs sponsored by Natural Sciences. In addition, the Social and Behavioral Sciences Department sponsors the Phi Theta Kappa National Honor Society and the GIVE Honors Program; they also manage the ROTC program in cooperation with St. Mary's University.

To provide special assistance in writing for students, faculty, and the community, the Communication and Learning Department manages the Rose R. Thomas Writing Center.

Many classes in the departments are involved in service learning through the Do It! Program at St. Philip's College.

Applied Science & Technology

St. Philip's College has one of the more diverse inventories of applied and technical course offerings. The Texas Higher Education Coordinating Board in 1999 gave the Applied Sciences Division the largest number of exemplary recognitions ever given to one college in Texas. The eight departments within this division are: Business Information Solutions; Automotive Technology; Electronic & Information Technology; Tourism, Hospitality and Culinary Arts; Allied Construction; Early Childhood and Family Studies; Multi-Modal Transportation Technology; Repair and Manufacturing Technology.

The Division of Applied Science and Technology believes that every student is of inestimable worth, deserving the most professional staff attitude and the finest and most intense personal interest that every person can possibly give.

Each degree and certificate plan is a goal directed to ensure that each course is relevant to the program title. The objective of each program is to develop job entry skills. However, each program allows sufficient latitude so students can select their own choice of electives based on their own interest area.

Health Sciences

The Division of Health Sciences was implemented in the fall of 2007 and includes Allied Health, Kinesiology and Nursing. The Division strives to meet the increasing need for skilled professionals in a dynamic health and fitness environment. These programs prepare students to become productive and contributing members of the health and fitness community.

The Allied Health Department prepares students for entry-level employment and/or skills upgrading in the healthcare industry through the following disciplines:

- Health Information Systems
- Histologic Technician
- Medical Laboratory Technician
- Occupational Therapy Assistant
- Physical Therapy Assistant
- Radiography Technology
- Respiratory Care Technology
- Sonography Technology
- Surgical Technology

Most programs within the Allied Health Department are accredited by the appropriate program specific agency.

The Kinesiology Department has a multi-fold purpose for students, as well as faculty and staff. The Department offers course work leading to an Associates of Health Science Degree and eventual transfer for students who want to pursue a career in Kinesiology. General activity classes are offered for all students who want to improve/maintain fitness and/or learn new skills. Intramural and extramural activities are encouraged for students who want a competitive experience. An open gym is available to the entire St. Philip's community for those who want to work out on their own.

St. Philip's College established its first health care program, the Vocational Nursing Program, in 1949 with 12 students and the Associate Degree Nursing Mobility (ADN) Program in 1998. Today, the Vocational Nursing (VN) Program has grown to a current enrollment of approximately 200 students on two campuses, Martin Luther King Campus and New Braunfels extension campus. It is the philosophy of the Nursing Education Department that health care must be administered in a holistic manner that empowers the client to continually strive toward a healthy adaptation to their ever changing environment.

The graduates of St. Philip's Nursing programs have been meeting the needs of the local healthcare community for over 57 years. Through their entry into the nursing profession, these nurses have become the leaders, caregivers, teachers, role models, and advocates who make a difference every day in the health and welfare of the community.

Continuing Education & Extended Services

Within the framework of the College's philosophy, mission, and goals, and in cooperation with government and military agencies, Continuing Education provides education, training, and employment programs. In addition, seminars, workshops, conferences, and certification updates are provided for community organizations, business, industry, military, and professional groups. A Continuing Education Unit (CEU) is the basic unit of measurement for an individual's participation in the College's offerings of non-credit classes, courses, and programs. A CEU is defined as ten (10) contact hours of participation in an organized continuing education experience under responsible sponsorship, capable direction, and qualified instruction.

Continuing Education has the flexibility and technology to respond rapidly to the needs of the community and to implement courses in programmatic areas, such as adult basic education, allied health, business, industry, and social services. Continuing Education also serves as an outreach mechanism for directing prospective students into appropriate credit programs within the College.

Bringing the College into the community by using satellite locations, St. Philip's College Continuing Education offers a wide variety of short, non-traditional courses independent of the credit certificate or degree programs.

- Vocational/Technical
- Classes in Self-Improvement and Personal Development
- Leisure time, special-interest courses for hobbies, recreation, and diversion
- Learning opportunities designed for groups with special needs
- Workforce Development

Evening Programs – Evening Programs provide an opportunity for a student to pursue his or her educational goals in the evening. Educational Support Services that include library services, tutoring, open-use computer labs, and a writing center are available to evening students. Student services, such as

Extended Services – As the outreach arm of the college, Extended Services is dedicated to serving learners, wherever demonstrated need prevails, with quality educational programs. Off-campus satellites provide systematic support service systems that can assist adult, part-time students in adjusting to the college learning experience.

Weekend College – The Weekend College grew out of the understanding that adults desire to learn and grow, but often are unable to attend traditionally scheduled classes. The curriculum is designed to serve a wide population of learners whose needs are vaguely understood and inadequately met by traditional academia. At a minimum, working adults require a curriculum with flexible time commitments and respect for individuality. Students can earn an associate's degree and/or certificate by attending classes only on Friday nights, Saturdays, and/or Sundays through the Weekend College program.

Southwest Campus

The Southwest Campus has been a vital part of St. Philip's College since mid-1980. Located at 800 Quintana Road, the Southwest Campus is the site of the Modal Transportation, Allied Construction Trades, Architectural Computer Aided Drafting & Interior Design, Repair and Manufacturing Departments, with ten programs of Study. The three main buildings of Southwest Campus also house administrative offices, the Resource Center, Advising and Enrollment Services, Continuing Education/Contract Training, SAISD Phoenix School, Youth Opportunity Program, Workforce Development Skills and GED Academy, Alamo Area Aerospace Academy, Texas One Stop Workforce Center, and other specialized workforce development training programs. Several of these programs offer students the opportunity to train at community sites at the San Antonio Housing Authority and MAUC locations.



Multi-
and
Learning
High

The Southwest Campus serves a vital role as the South Texas region's primary center for technical and industrial training and education. A major satellite operation of St. Philip's College, Southwest Campus serves approximately 2,000 students each semester, providing classroom instruction and hands-on-training for careers in high-skill, high-wage fields such as allied construction, industrial manufacturing, aviation technology, railroad operations, architectural drafting, CNC, welding, heavy equipment maintenance and repair, as well as a variety of other manufacturing fields.

The state's first community college officially designated a "One-Stop Texas Workforce Center," the Southwest Campus serves as one of four centers linking welfare recipients and displaced workers to area education opportunities. The campus also remains a major training and development resource for business and industry, offering specialized training to help employees upgrade their technical on-the-job skills.

Located near Kelly USA, Southwest Campus is strategically positioned as a world-class technical education center capable of meeting the needs of base employees facing career transitions as well as incoming employers in need of a highly skilled workforce.



In May 2005 the Multi-Disciplinary Instructional Center (MDIC), a 26,747 square foot building, with an approximate cost of \$2,274,000 was completed. It replaced Building 3004, which was demolished. The two-story MDIC houses five Instructional Technologies labs; a technician's workroom, storage room and server room; offices; conference room; faculty resource room; and faculty/staff and student break rooms. A video conference room, a seminar room and eight classrooms are located in the second floor.

In the spring of 2009 a 21,742 square foot state-of-the-art diesel lab facility was completed. It includes 10 instructional diesel technology bays housed within a one-story building. The new lab allows the college to provide students with the most up-to-date technological training required for diesel and heavy machinery maintenance in the San Antonio area.

The ceremony to celebrate the opening of the diesel lab also included a ribbon cutting to commemorate several classroom renovations in Building 3020 at Southwest Campus.

* St. Philip's College is a community college operating under an open door policy. The desire is to serve each student's educational needs while maintaining a high standard of excellence in all programs.

Institutional Resources

Center for Learning Resources

The Learning Resource Center's mission is to provide an educational environment which stimulates leadership, personal growth, and a lifelong appreciation for learning while focusing on the importance of being responsible to a population rich in its ethnic, cultural and socioeconomic diversity.

The Center for Learning Resources is comprised of three service components: the Library, Computer Operations and Media Services. Resources are available to enhance classroom instruction and meet the information needs of students, faculty, staff, and administrators. A large number of resources are available on and off-campus at either the MLK library or the branch library at the Southwest Campus.



The Library – The LRC's Web Site provides patrons with quick access to an array of scholarly research materials in different formats. Although the College library has 145,505 cataloged items, including over 63,190 books in its collection, electronic resources have grown greatly with over 28,000 books in digital format and 166 audio books. The Library subscribes to over 420 current print periodicals; however, the 94 electronic full-text databases and periodical indexes offer access to thousands of articles from journals, magazines, newspapers and books.

Additionally, the MLK Campus LRC has over 110,000 full-text microfiche, growing DVD (movie), CD (music) and video collections. SWC LRC has 41 DVDs, 1,324 videos and 82 periodical subscriptions. Other resources such as anatomical models for biology and medical program students are available at the MLK Campus.

The LRC's Web Site also provides patrons with quick access to electronic links to other libraries, as well as to research guides, bibliographies, general information and monthly list of new materials.

Computer Operations – The LRC offers 150 Dell computers that are available for student projects, email, Internet browsing and research. LRC faculty instructs students on the use of the World Wide Web and all other LRC resources for research. SPC faculty may contact the Reference Librarians to schedule bibliographic/library instruction for their classes. Notebook computers are loaned to First-Time-In-College (FTIC) students on a semester-by-semester basis. (See FTIC Counselors for application process).

Media Services and Archives – Media Services provides the SPC campuses with non-print-oriented instructional support. It supplies and maintains most of the audio-visual equipment that is used throughout the campuses. It also produces instructional and promotional materials for College programs and events. Original materials are created using some of the latest technology in the areas of graphics arts, studio art, photography, educational television, and sound services.

St. Philip's College Archives is the official repository for historical records created by and about the College. Access is granted on the basis of age, condition and content of the records. Researchers are required to request permission to publish and to note copyright permission and credit in print.

Instructional Technologies

The Instructional Technologies (IT) Department's mission is to work hard to provide the finest computer labs equipped with the best modern equipment and instructional software for student use and instruction. The department provides the faculty and staff with workstations and software needed to support the educational process. They install the necessary software and they make sure all systems work smoothly together.

- *Technologies Services for Students* – Many academic fields use computers as an aid to instruction. The IT department provides computer labs and required software for those that do. They also have an open lab at both the Martin Luther King (MLK) Campus and the Southwest (SWC) Campus. These labs are available for unstructured study and have the same software found in the classroom labs. For those requiring additional course help, online tutoring is available. Wireless connection to the Internet is available as is special software and equipment for students with disabilities.
- *Faculty and Staff Services* –The IT Department provides computer labs of various sizes for instruction. These can be reserved online. They perform software installation and configuration and hardware maintenance and repair for lab and office computers. They also setup, configure and troubleshoot printers, SMART boards, projectors, scanners and other computer-related equipment.

Instructional Innovation Center

St. Philip's College Instructional Innovation Center is a resource center dedicated to providing a broad range of professional development opportunities for all staff and faculty including but not limited to: technical, curricular and personal growth training; curriculum and course development in traditional, technologically enhanced and distance learning environments; classroom research and assessment; technology and media support; and specialized activities and events to support excellence in teaching, learning and service.

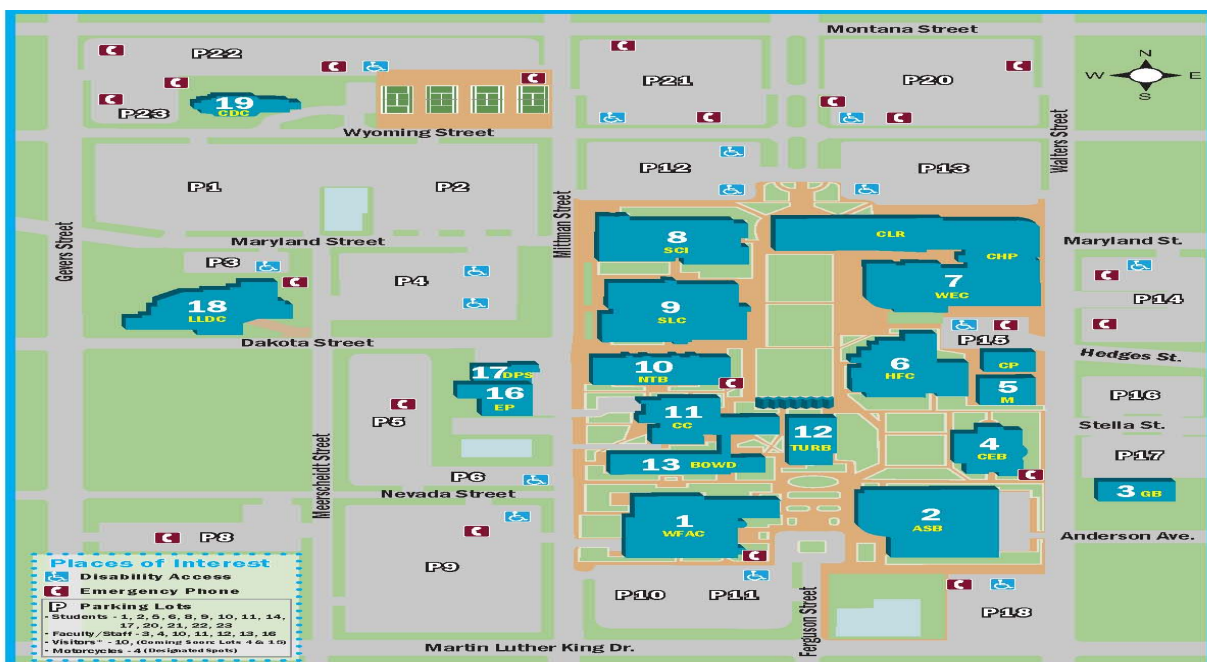
- *Center for Education Research* – Conducts serious research on contemporary education topics. Provides an excellent platform to promote professional publications/articles, thus increasing the college's national prominence.
- *Heart of Learning* – The Heart of Learning Group is an information association of members of the St. Phillip's College community who are committed to building awareness, deepening learning, and sustaining growth in ourselves as well as those for whom we all work and with whom we all learn – our students. Through dialogue, discussion and demonstration, the Heart of Learning group seeks to nurture the well being of all those who are part of the St. Phillip's College learning community.
- *Master Teacher* – The Master Teacher Program is a certification program where participants actively engage in reflective and creative exercises and dialog to improve their own teaching, as well as share their teaching experiences.

Physical Facilities of Alamo Colleges - St. Philip's College

SITES	ACREAGE	# OF BUILDINGS	SQ. FT.
MLK Campus	50.82	18	765,244
Southwest Campus	15.7	7	315,710
Advanced Technology Center	1.5	1	22,865
Total	68.02	26	1,103,814

Physical Facilities Continued

MLK CAMPUS				
Building	Sq. Ft.	Original Age	Renovation Date	
Center for Health Professionals	115,169	2009	n/a	
Center for Learning Resources	68,018	2009	n/a	
Welcome Center	30,449	2009	n/a	
LLDC	12,831	1997	n/a	
Applied Science Building	87,400	1993	n/a	
Bowden Building	20,830	1953	1996	
Campus Security Building	1,857	1977	n/a	
Continuing Education Building	10,000	1995	n/a	
Child Care Center	6,700	2001	n/a	
Maintenance Shop	8,608	1972	n/a	
Norris Technical Building	85,829	1972	1998	
Gymnasium	25,833	1942	1990	
Central Plant	8,070	1975	1995	
Science Building	83,829	1992	n/a	
Campus Center	20,064	1953	1986	
Sutton Learning Center	119,740	1975	1998	
Watson Theatre & Fine Arts	50,360	1993	n/a	
Turbon Student Center	9,657	1953	1996	
Total	765,244			

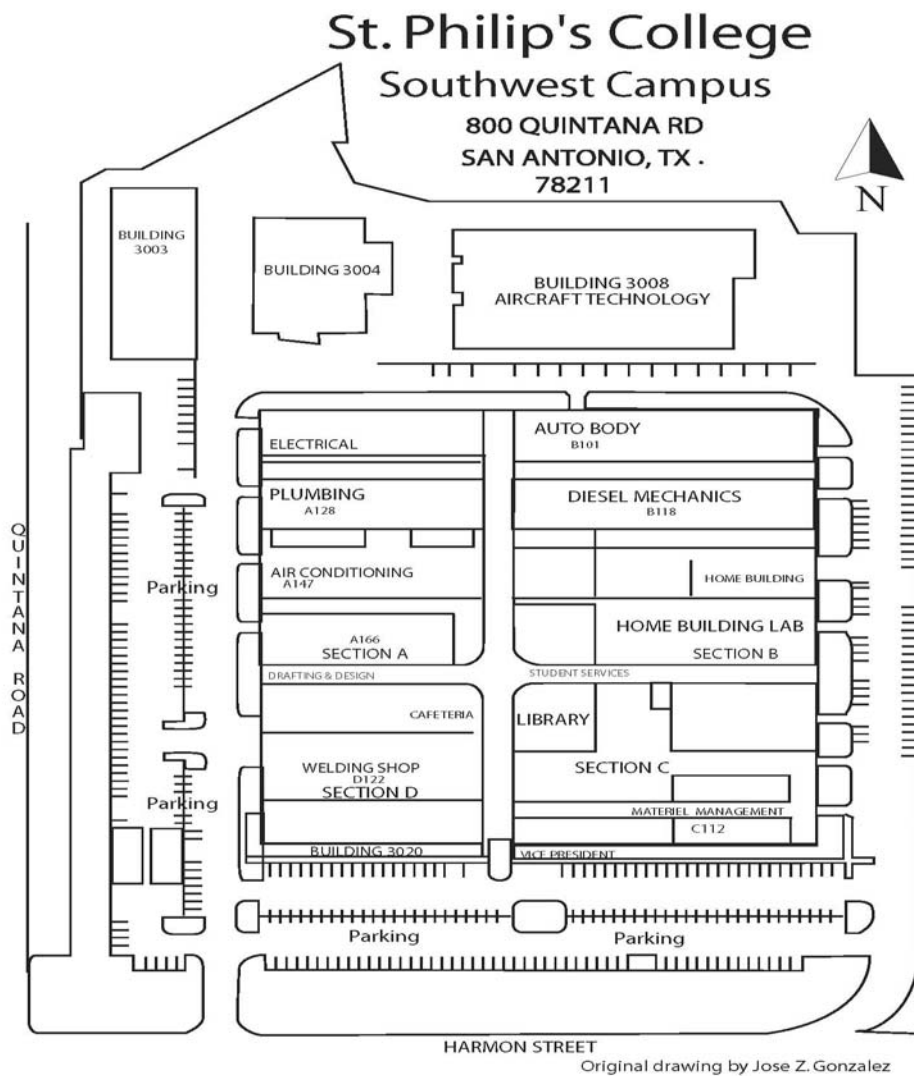


* Campus police will issue a temporary parking permit for visitors. For more information call campus police at (210) 486-2099. Created by Michelle Vasquez, 4/02/09

Physical Facilities Continued

SOUTHWEST CAMPUS

Building	Sq. Ft.	Original Age	Renovation Date
Multi-Disciplinary Instructional Center	26,747	2005	n/a
Aircraft Technology Center	41,479	1937	1999
Industrial Technology Center	225,742	1937	1990
Diesel Technology Center	10,694	2008	n/a
Diesel Technology Lab	11,048	2008	n/a
Total	315,710		



Science Building

The Science Building, which was completed in 1992, houses the Natural Sciences Department and includes: Biology, Chemistry, Geology and Physics. It also houses several lecture rooms and instructors offices.



Sutton Learning Center



Completed in 1977, the Sutton Learning Center and dedicated in honor of G. J. Sutton in 1979. It is home to the Administrative Offices, Behavioral Sciences, Career Services, College Health Center, First Year Experience, Mailroom, Public Relation, Social Sciences, Student Recruitment and the Transfer Center.

Norris Technical Building

Built in 1970 and originally completed with three floors, the Norris Technical Center Building received a fourth floor in 1972. Dedicated in honor of Clarence W. Norris, Dean Emeritus, in 1975, the NTB underwent a complete renovation in 1996 and now houses the Math, Reading, and English departments, and the offices for Educational Support Services, Instructional Technologies, and Center for Distance Learning. This building is also home to the Learning Lab, the Reading Lab, the Instructional Innovation Center, the Center for Educational Research, and the Rose R. Thomas Writing Center.



Campus Center



This building was built in 1953 and renovated in 1978 and again 1987. It houses the bookstore, cafeteria, and the Hospitality Management Laboratory. The Heritage Room, one of the college's major venues, is also located in this building. The Campus Center is also home to the Department of Tourism, Hospitality and Culinary Arts. At SPC, we offer students a specialized experience of the highest caliber to meet the challenges of the fastest growing industries across the globe.

Turbon Student Center

Across from the Campus Center is the E. L. Turbon Student Center, located directly in the heart of campus. This building, constructed in 1953 and renovated in 1976 and 1996, houses a student conference room, the student government office, the student newspaper office, study areas, lockers, lounge areas, and a variety of recreational features. This building is the center of co-curricular activities. In 1996, the E.L. Turbon Student Center was renamed for Everett L. Turbon, who devoted 36 years of service to St. Philip's College.



Bowden

The Bowden Building, built in 1953 and dedicated in honor of Miss Artemisia Bowden in 1954, underwent major renovations in 1995 in order to accommodate the Business Information Solutions Department. The department currently consists of the following programs: Accounting, Business Administration and Computer Science. Business Information Solutions is also home to the Corporate and Entrepreneurial Training Center, Certified Internet Webmaster Program and the Microsoft Office Specialist Testing Center.



Watson Fine Arts Center

Completed in 1992, this structure features a 600-seat theatre and instructional facilities for the study of art, music, dance, and drama. This center boasts studios, practice rooms, a gallery/ conference room, and instructors' offices. In 1996, the WFAC was dedicated in honor of Leonidas Watson, Associate Dean Emeritus.



Applied Science and Technology



This building was completed in 1992 and is home to Automotive Technology, CISCO Academy, Electronic Systems Technology, Grants, Microsoft Academy, Institutional Advancement and Planning and Research.

Health and Fitness Center

St. Philip's has an excellent Health and Fitness Center. Built in 1949 and remodeled in 1986, this structure contains a basketball court, a volleyball court, an aerobic studio, an indoor swimming pool, a weight room, dressing rooms, computer laboratories, and instructors' offices. The gym is available to all students, faculty, and staff.



Continuing Education Building



The Continuing Education Building which was completed in 1992 houses classrooms, laboratories, and offices. Our Continuing Education courses allow people from all walks of life to keep up with ever changing needs in the private sector through life-long continuous learning.

Child Development Center

Built in 2000, The Child Development Center is located on the northwest corner of the campus on Wyoming Street, and can accommodate up to 57 children. The Center provides childcare services to the students and staff of St. Philip's College. Our mission is to provide the highest quality training for students and early care and education for your children with respect to cultural differences, developmental capabilities and educational opportunities.



Learning and Leadership Development Center



Built in 1997, the Learning and Leadership Development Center (LLDC) is located on Meerscheidt Street, between Maryland and Dakota Street, and west of the Sutton Learning Center. The LLDC houses classrooms and computer labs designed to assist community members with attaining literacy skills. This building is shared with the City of San Antonio's literacy programs.

Welcome Center

The Welcome center is one of three state of the arts buildings built in 2009. The Welcome Center includes offices and work areas for such student support services as counseling, registration and financial aid.



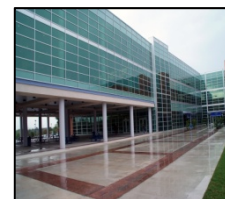
Center for Health Professionals

The Center for Health Professionals, also constructed in 2009, is the most advanced medical training facility east of the Medical Center. Its capabilities consist of classrooms and labs meant to replicate various departments found throughout healthcare facilities and will support career programs such as vocational nursing, surgical technology, radiology and diagnostic imaging, physical therapy, respiratory therapy, occupational therapy, medical assistant, health information systems and medical transcription. Both the physical therapy and respiratory therapy programs at St. Philip's College are rated Exemplary by the Texas Higher Education Coordinating Board.



Center for Learning Resources

The Center for Learning Resources is the last of the three newest editions in 2009 and includes a two-story library stacks area and many private reading areas that provide students and the public with the newest library facility in the city. It also home to St. Philip's Media Services Department.



ENROLLMENT TRENDS

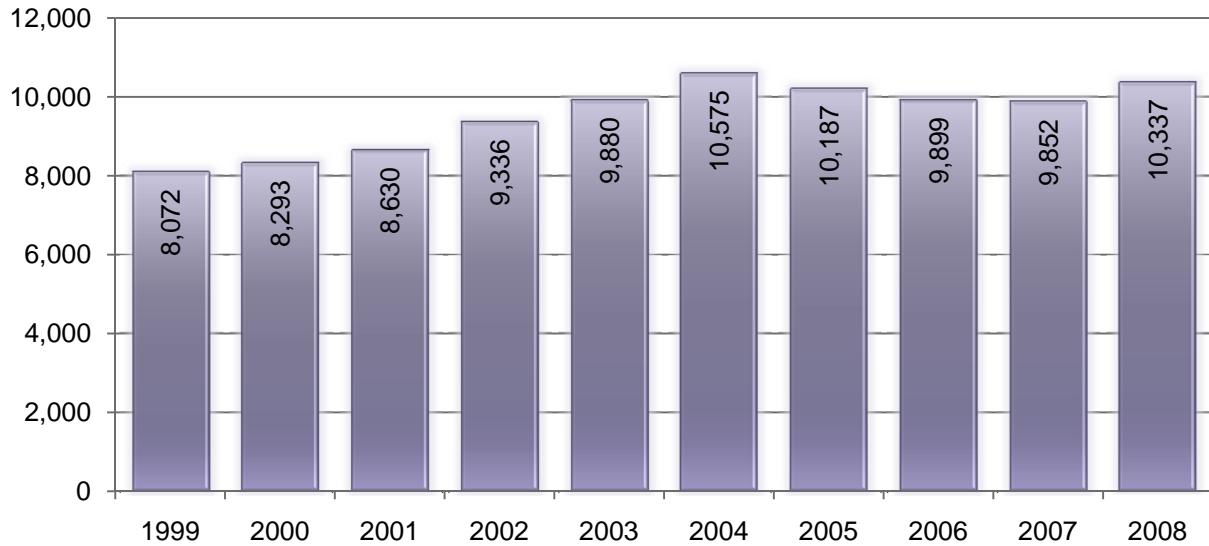
Credit Programs

Fall Semesters 1999 – 2008	31
Spring Semesters 2000 – 2009.....	31
Summer Session I 2000 – 2009.....	32
Summer Session II 2000 – 2009	32
By Classification (Summary).....	33
By Classification (Percentage).....	34
Gender	35
Ethnicity.....	35
Age.....	36
Part-Time vs. Full Time	38
Day vs. Evening	38
Divisions	39
Contact Hours	40
Distance Learning	41
Developmental Education.....	41
Continuing Education – Contact Hours	42
Continuing Education – Unduplicated Enrollment	43

Enrollment

Fall Semesters 1999 - 2008

Students

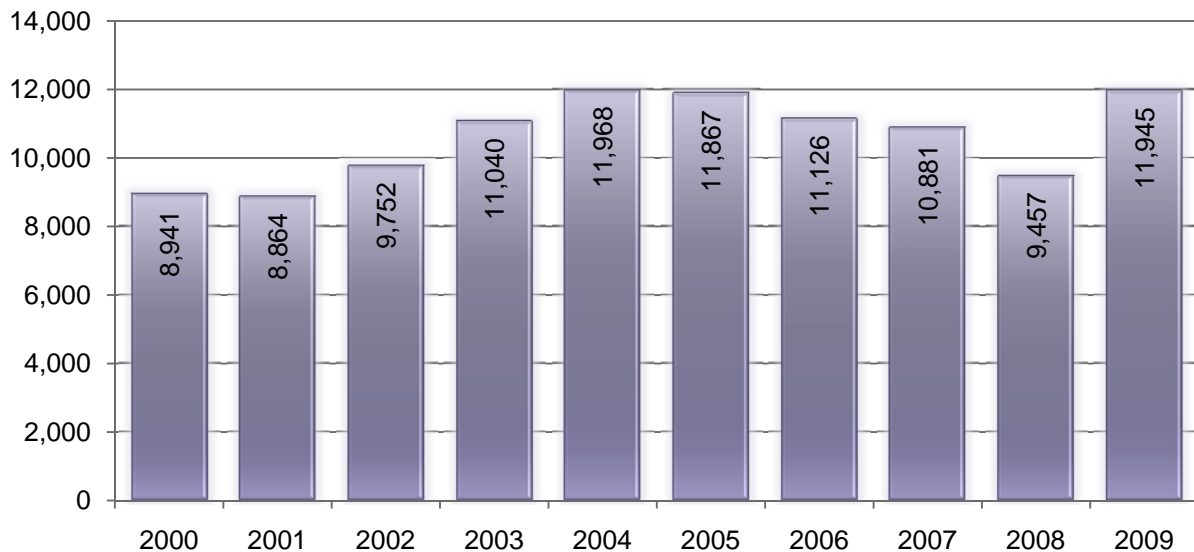


Enrollment

Spring Semester 2000-2009

(Includes Fall Flex II)

Students



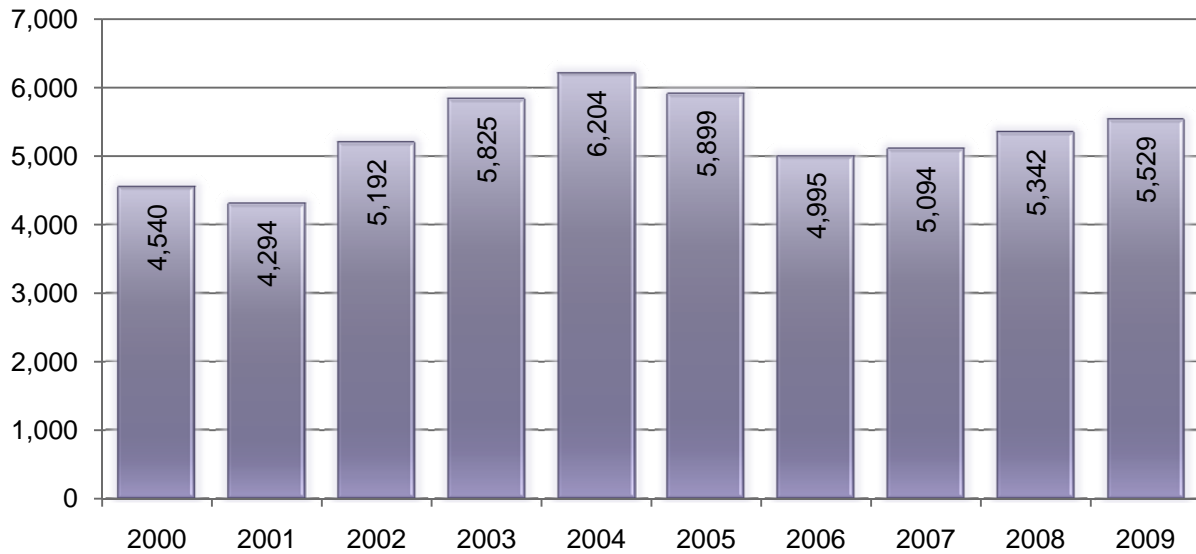
Source: RCA003; CBM001

Enrollment

Summer I Semester 2000-2009

(Includes Spring Flex II)

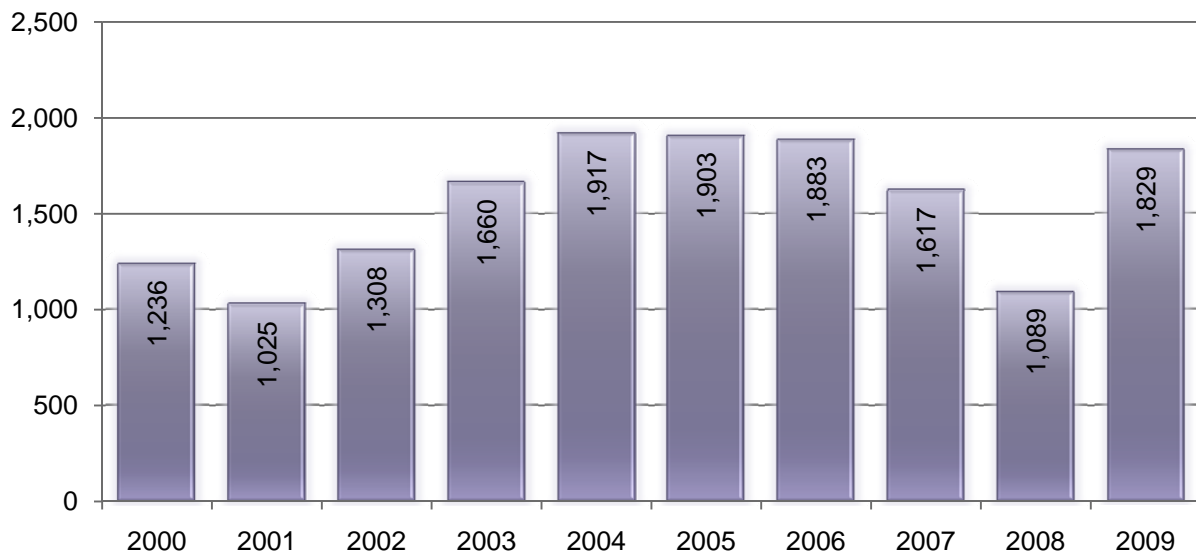
Students



Enrollment

Summer II Semester 2000-2009

Students



Source: RCA003; CBM001

Fall	2004	2005	2006	2007	2008
Total Students	10,575	10,187	9,899	9,852	10,337
Gender					
Male	4,470	4,312	4,150	4,185	4,453
Female	6,105	5,875	5,749	5,667	5,884
Ethnicity					
Black	1,837	1,640	1,628	1,596	1,675
White	3,280	3,264	3,272	3,334	3,428
Hispanic	5,201	4,967	4,702	4,658	4,953
Other	257	316	291	264	281
Age					
18 or Less	1,080	1,200	1,300	1,582	2,271
19-20	1,831	1,713	1,634	1,722	1,627
21-22	1,397	1,352	1,224	1,155	1,136
23-24	999	979	909	881	832
25-26	818	809	806	743	730
27-28	594	617	663	580	620
29-30	592	498	513	499	502
31-34	998	904	826	789	772
35-39	764	781	764	736	717
40-49	1,093	943	890	830	802
50+	409	391	370	335	328
Part-Time/Full-Time					
Full-Time	4,013	3,710	3,692	3,563	3,145
Part-Time	6,562	6,477	6,207	6,289	7,192
Day/Evening					
Day	7,042	7,101	7,027	7,463	8,196
Evening	1,500	1,379	1,242	1,071	851
Concurrent	2,033	1,707	1,603	1,318	1,290
Division					
Applied Sciences	4,988	4,862	4,709	3,152	3,360
Arts & Sciences	3,166	3,155	3,073	4,533	4,739
Health Sciences	Divisional Changes Occurred in 2007			1,970	2,020
Non-Specific	2,421	2,170	2,117	197	218

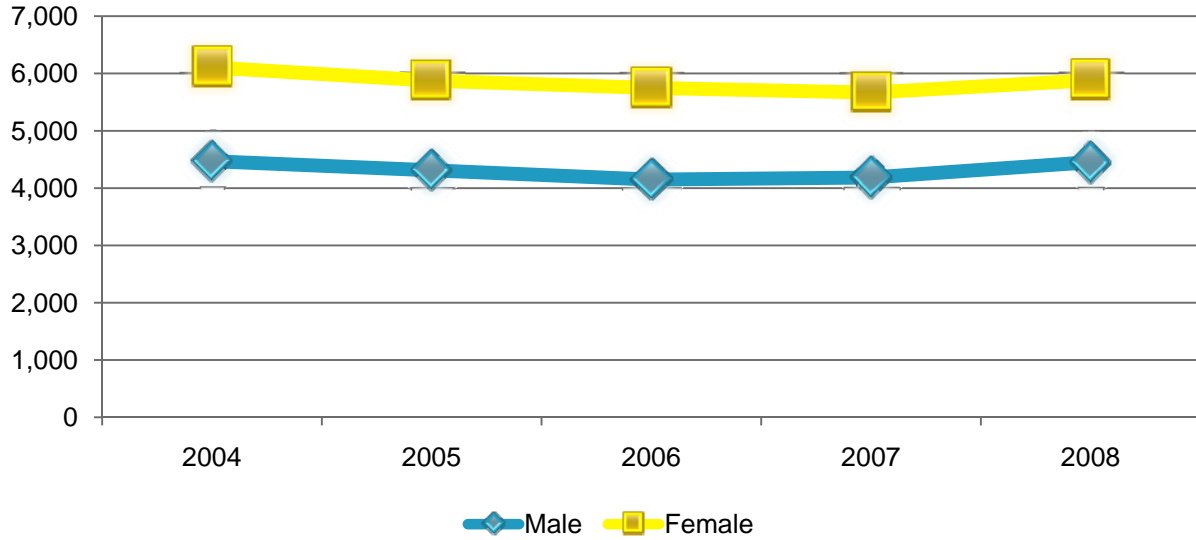
Source: CBM001; RCA003

Fall	2004	2005	2006	2007	2008
Total Students	10,575	10,187	9,899	9,852	10,337
Gender					
Male	42%	42%	41 %	42%	43%
Female	57%	57%	58%	58%	57%
Ethnicity					
Black	17%	17%	17%	16%	16%
White	29%	31%	32%	33%	34%
Hispanic	51%	49%	48%	47%	47%
Other	2%	2%	3%	2%	3%
Age					
18 or Less	10%	11%	13%	13%	22%
19-20	17%	16%	16%	17%	16%
21-22	13%	13%	12%	12%	11%
23-24	9%	9%	9%	9%	8%
25-26	7%	7%	8%	8%	7%
27-28	5%	6%	6%	7%	6%
29-30	5%	4%	5%	5%	5%
31-34	9%	8%	8%	8%	7%
35-39	7%	7%	7%	8%	7%
40-49	10%	9%	9%	9%	8%
50+	3%	3%	3%	4%	3%
Part-Time/Full-Time					
Full-Time	37%	36%	37%	36%	70%
Part-Time	62%	64%	63%	64%	30%
Day/Evening					
Day	66%	67%	70%	71%	76%
Evening	15%	14%	14%	13%	11%
Concurrent	20%	19%	17%	17%	13%
Division					
Applied Sciences	49%	47%	48%	48%	32%
Arts & Sciences	29%	30%	31%	31%	46%
Health Sciences	Divisional Changes Occurred in 2007			20%	20%
Non-Specific	22%	23%	21%	21%	2%

Source: CBM001; RCA003

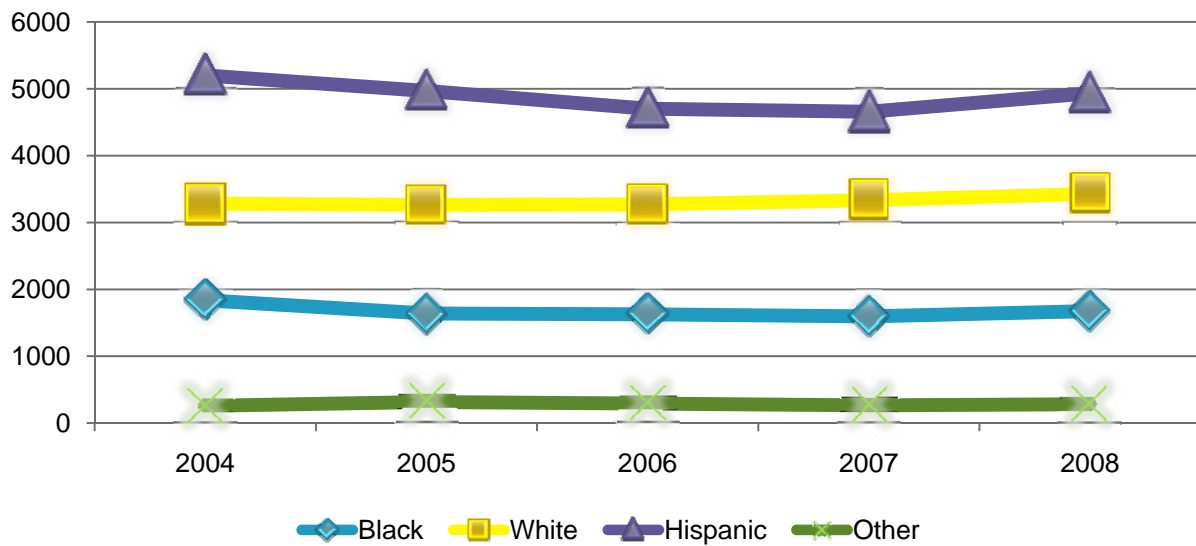
Gender

Fall	2004	2005	2006	2007	2008
Male	4,470	4,312	4,150	4,185	4,453
Female	6,105	5,875	5,749	5,667	5,884



Ethnicity

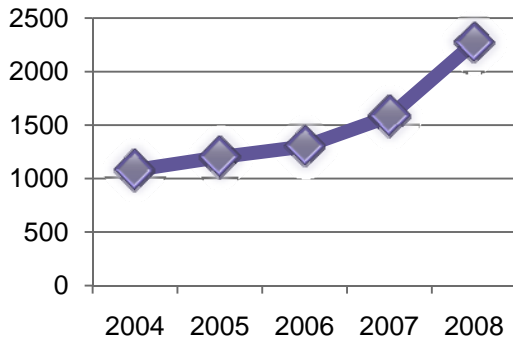
Fall	2004	2005	2006	2007	2008
Black	1,837	1,640	1,628	1,596	1,675
White	3,280	3,264	3,272	3,334	3,428
Hispanic	5,201	4,967	4,702	4,658	4,935
Other	257	316	291	264	281



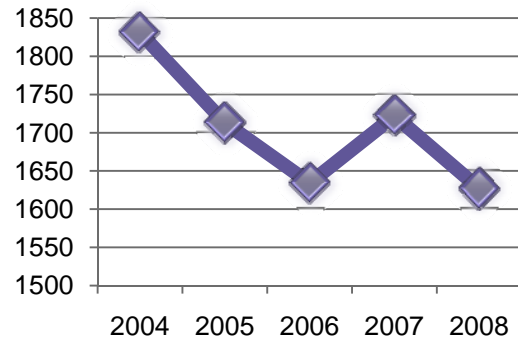
Source: CBM001; RCA003

Age	Fall	2004	2005	2006	2007	2008
18 or Less		1,080	1,200	1,300	1,582	2,271
19-20		1,831	1,713	1,634	1,722	1,627
21-22		1,397	1,352	1,224	1,155	1,136
23-24		999	979	909	881	832
25-26		818	809	806	743	730
27-28		594	617	663	580	620

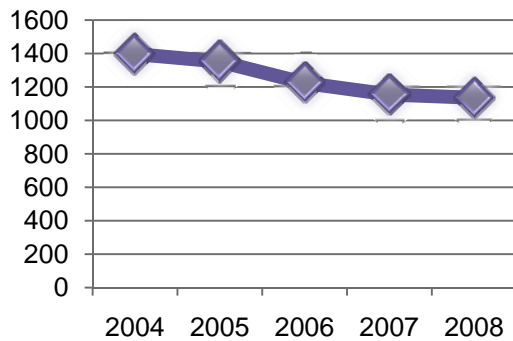
Age 18 or Less



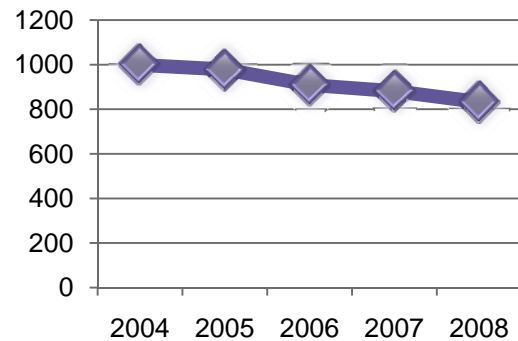
Age 19-20



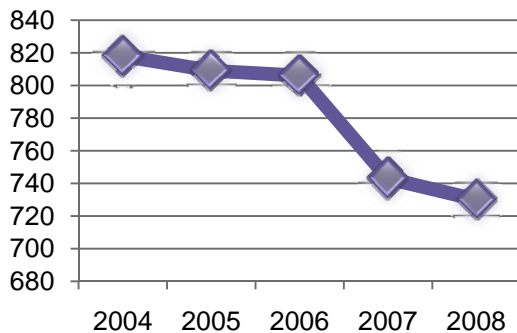
Age 21-22



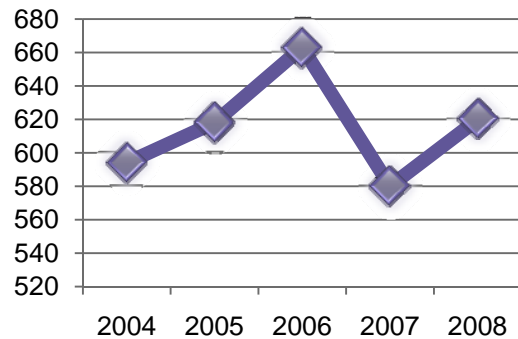
Age 23-24



Age 25-26



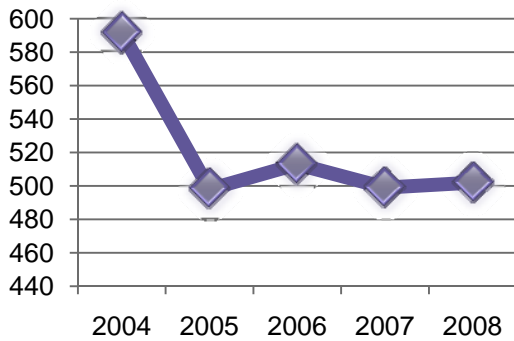
Age 27-28



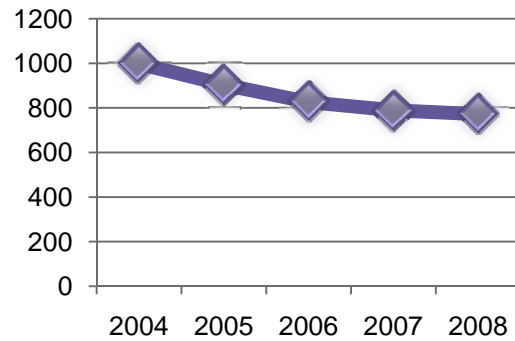
Source: CBM001; RCA003

Age (Cont.)		2004	2005	2006	2007	2008
Fall						
	29-30	592	498	513	499	502
	31-34	998	904	826	789	772
	35-39	764	781	764	736	717
	40-49	1,093	943	890	830	802
	50+	409	391	370	335	328

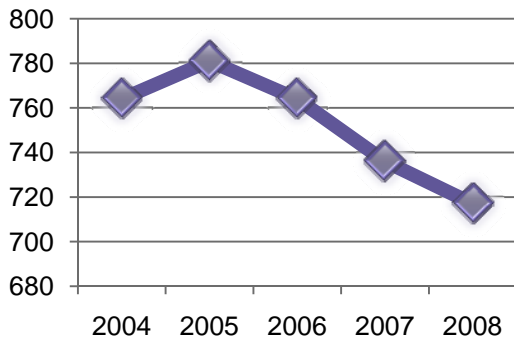
Age 29-30



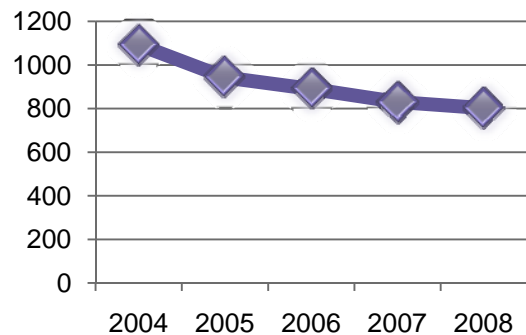
Age 31-34



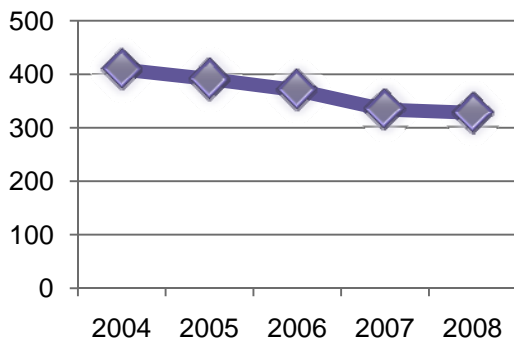
Age 35-39



Age 40-49



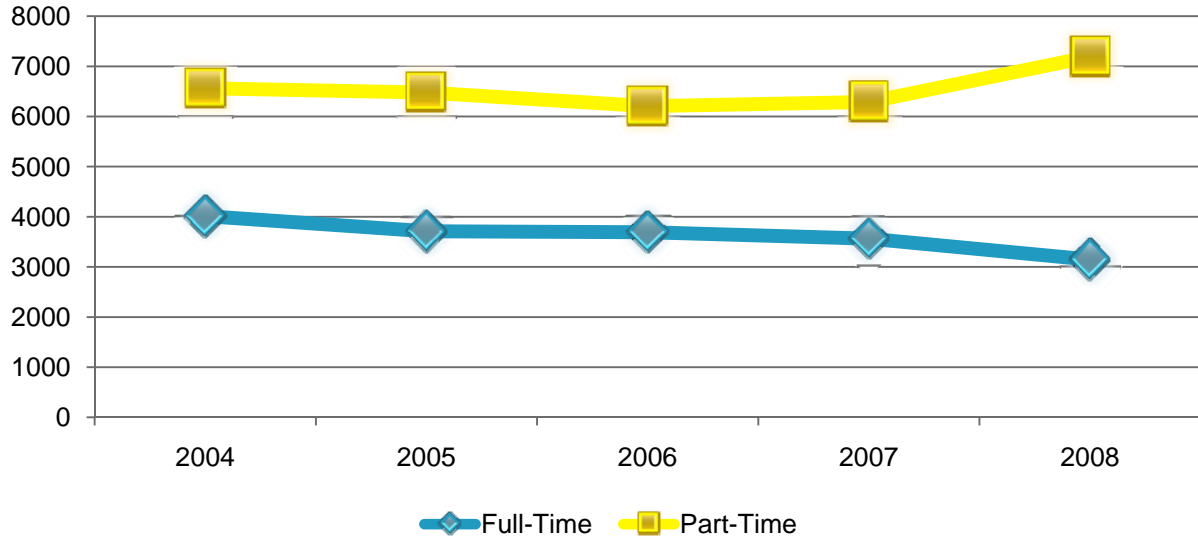
Age 50+



Source: CBM001; RCA003

Part-Time/Full-Time

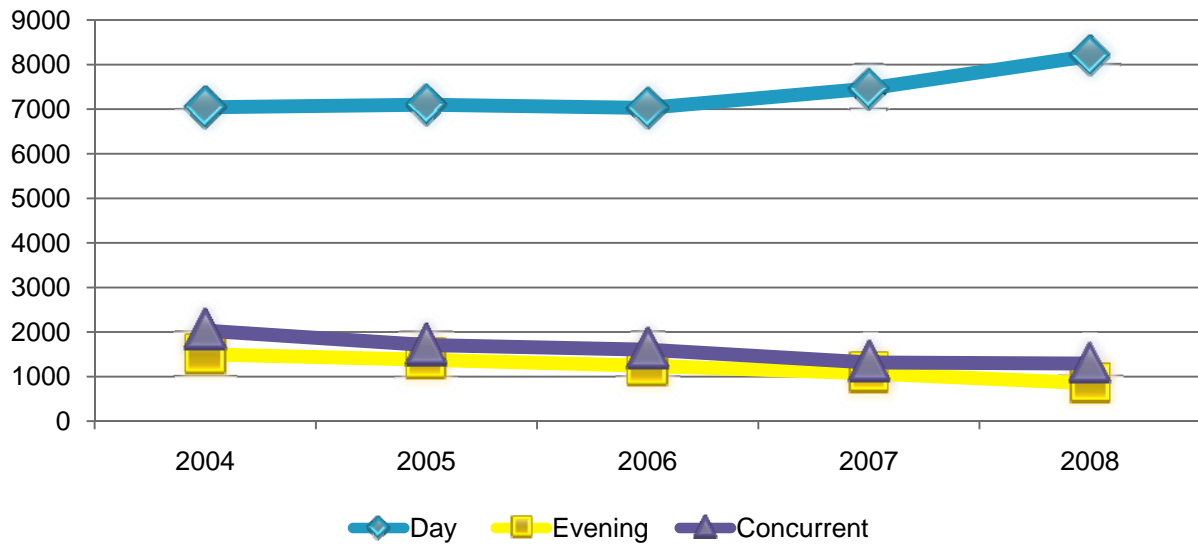
Fall	2004	2005	2006	2007	2008
Full-Time	4,013	3,710	3,692	3,563	3,145
Part-Time	6,562	6,477	6,207	6,289	7,192



Source: RCA003

Day/Evening

Fall	2004	2005	2006	2007	2008
Day	7,042	7,101	7,027	7,463	8,196
Evening	1,500	1,379	1,242	1,071	851
Concurrent	2,033	1,707	1,603	1,318	1,290

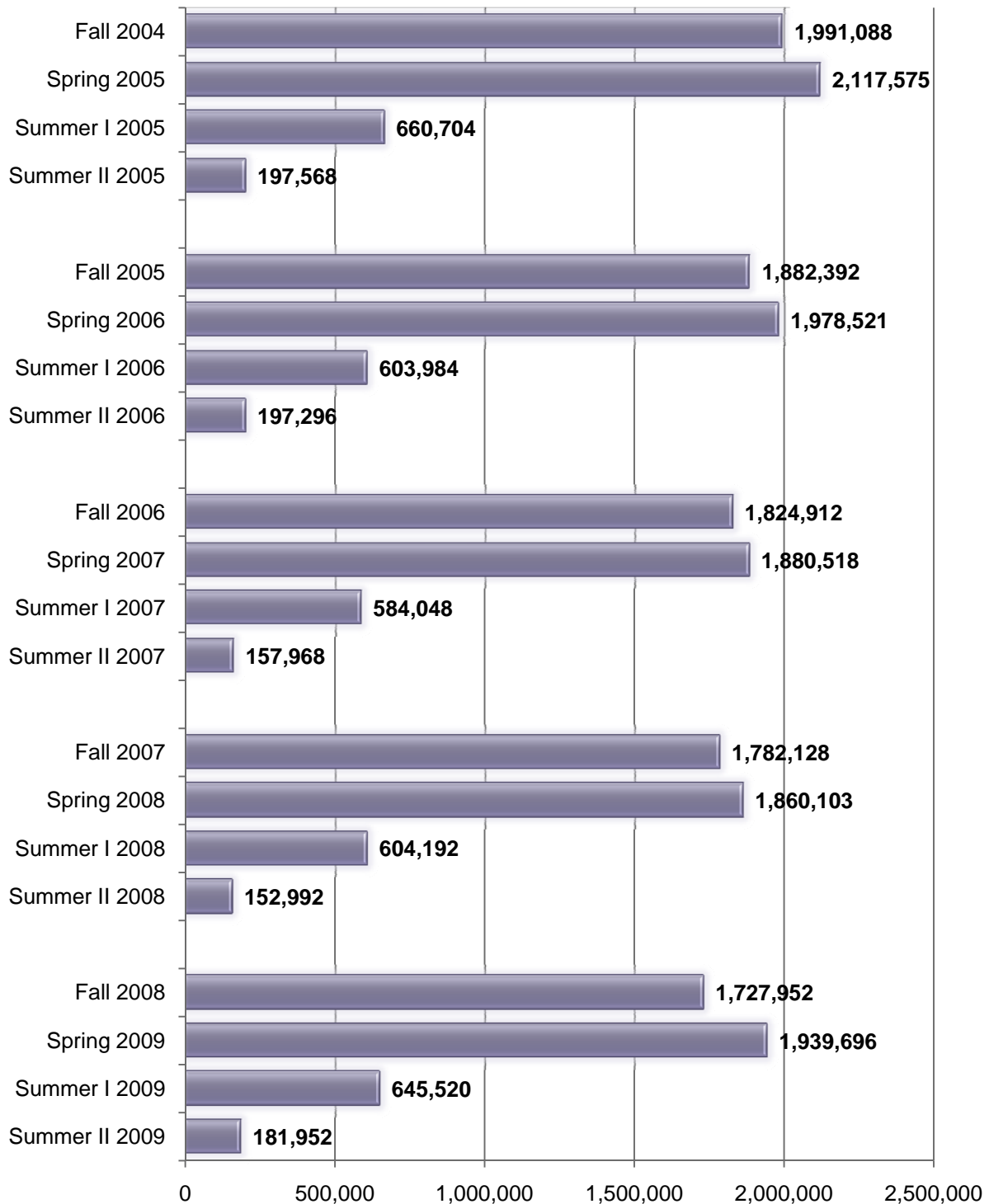


Source: RCA003

Division						
	Fall	2004	2005	2006	2007	2008
Applied Sciences		4,988	4,862	4,709	3,152	3,360
Arts & Sciences		3,166	3,155	3,073	4,533	4,736
Health Sciences		Divisional Changes Occurred			1,970	2,020
Non-Specific		2,421	2,170	2,117	197	218

Source: CBM001; SDM FOCEXEC; SDM.SPS

Contact Hours



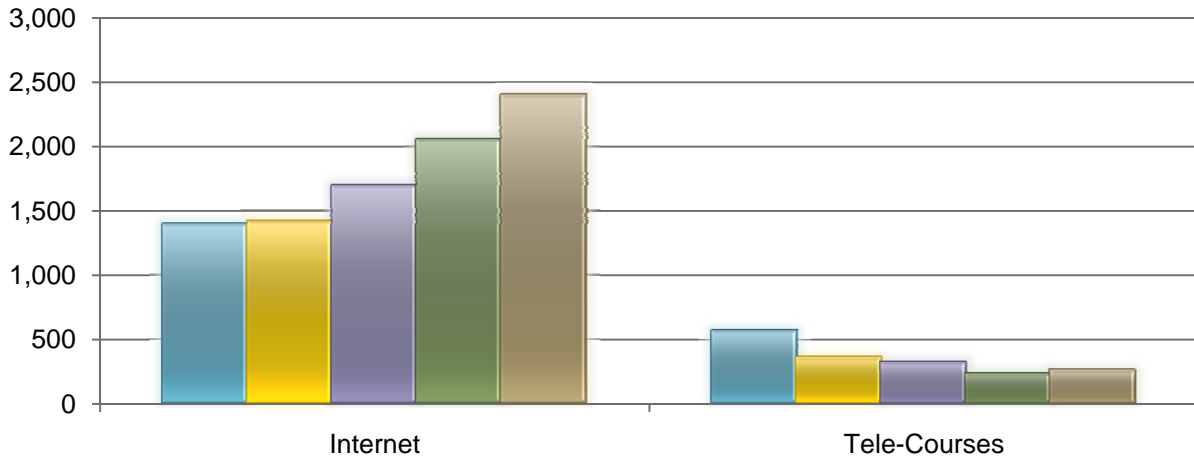
Fall Flex II included in spring; Spring Flex II included in summer I)

Source: CBM004

Distance Learning Enrollment - Unduplicated

(Includes Fall Flex II)

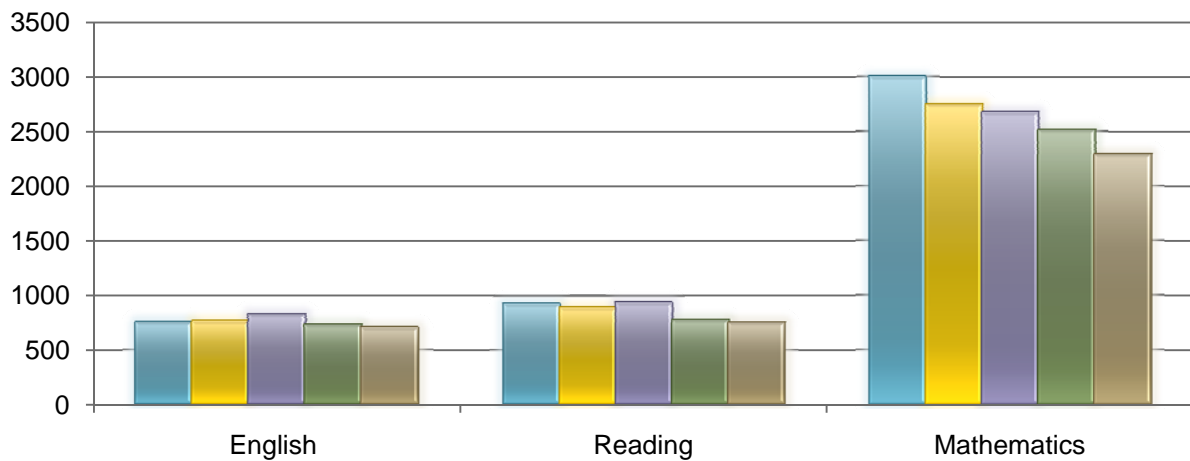
Fall	2004	2005	2006	2007	2008
Internet	1,397	1,417	1,697	2,055	2,400
Tele-Courses	570	358	322	232	257



Source: SIS+ Database

Developmental Education

Fall	2004	2005	2006	2007	2008
English	754	757	824	727	699
Reading	923	885	933	778	753
Mathematics	2,994	2,744	2,670	2,508	2,290



Source: SIS+ Database

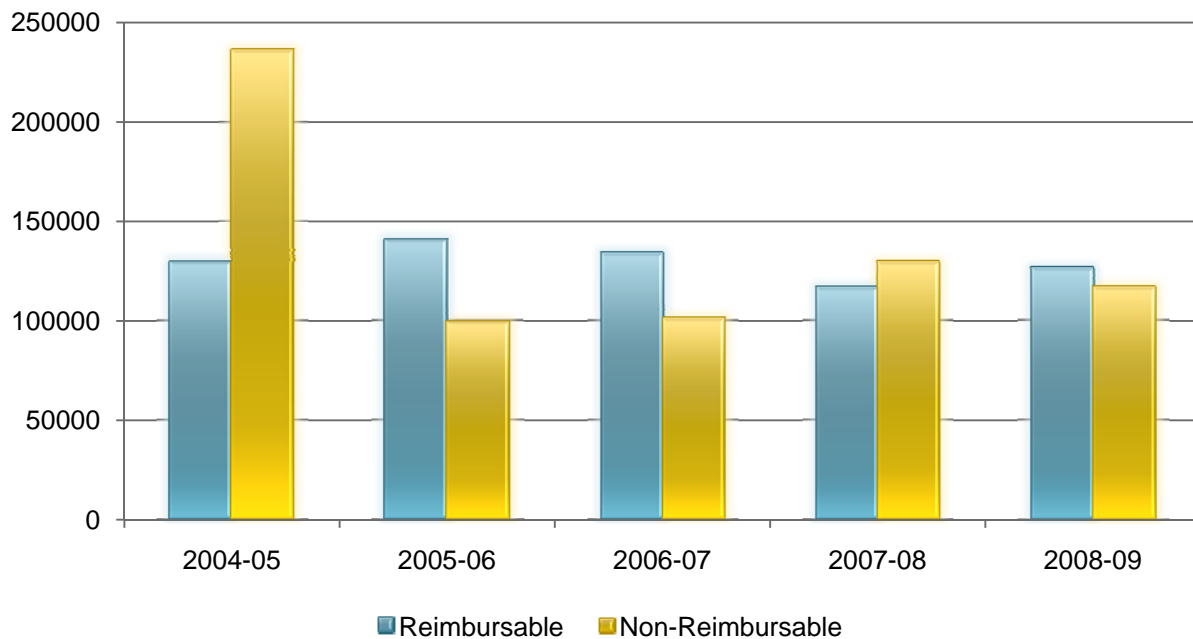
Continuing Education: Contact Hours

		<u>Reimbursable</u>				
		2004-05	2005-06	2006-07	2007-08	2008-09
Quarter A		37,288	53,884	32,812	38,549	48,514
Quarter B		45,279	31,830	30,386	18,844	29,205
Quarter C		24,568	31,335	38,350	26,739	21,184
Quarter D		22,570	23,534	32,296	32,430	27,046
Total		129,705	140,583	133,844	116,562	125,949

		<u>Non-Reimbursable</u>				
		2004-05	2005-06	2006-07	2007-08	2008-09
Quarter A		62,067	37,827	12,899	10,843	24,658
Quarter B		86,542	13,570	12,791	3,409	9,063
Quarter C		18,115	21,088	10,969	8,014	5,171
Quarter D		69,421	26,753	64,406	106,888	77,497
Total		236,145	99,238	101,065	129,154	116,389

		<u>Grand Totals</u>				
		2004-05	2005-06	2006-07	2007-08	2008-09
Yearly Totals		365,850	239,821	234,909	245,716	242,338

Continuing Education Contact Hours Reimbursable & Non-Reimbursable 2004-05 to 2008-09



Source: Registrar's Report of Continuing Education Contact Hours and Enrollment

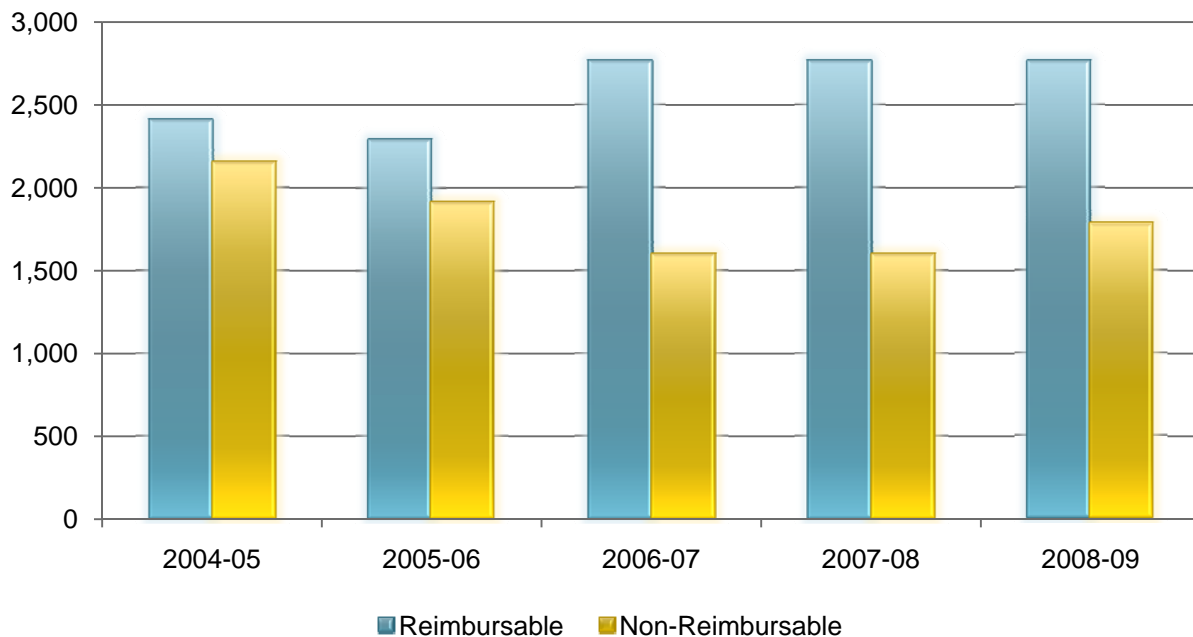
Continuing Education: Unduplicated Enrollment

		<u>Reimbursable</u>				
		2004-05	2005-06	2006-07	2007-08	2008-09
Quarter A		486	523	673	797	944
Quarter B		643	647	416	718	680
Quarter C		480	681	670	672	531
Quarter D		479	559	533	578	609
Total		2,088	2,410	2,292	2765	2,764

		<u>Non-Reimbursable</u>				
		2004-05	2005-06	2006-07	2007-08	2008-09
Quarter A		474	355	514	283	443
Quarter B		592	335	218	137	241
Quarter C		476	796	605	369	426
Quarter D		431	670	578	811	671
Total		1,973	2,156	1,915	1,600	1,781

		<u>Grand Totals</u>				
		2004-05	2005-06	2006-07	2007-08	2008-09
Yearly Totals		4,061	4,566	4,207	4,365	4,545

Continuing Education Unduplicated Enrollment Reimbursable & Non-Reimbursable 2004-05 to 2008-09



Source: Registrar's Report of Continuing Education Contact Hours and Enrollment

STUDENT PROFILE

General Information

Gender, Ethnicity, Age, Major, Hours Enrolled, Day vs. Evening 45

Top Ten

Arts & Science Majors 46

Applied Science & Technology Majors 46

Health Sciences Majors 47

Counties of Residence 47

States of Residence..... 48

Feeder High Schools 48

Feeder Zip Codes of Residence 49

Student Objective in Attending St. Philip's College 50

Intended Duration of Enrollment 51

Academic Experience on Entry 52

Student Employment Status 53

Financial Aid Awards 54

Registration 55

Academic Achievement

Graduation Degrees & Certificates Awarded..... 56

Graduates by Ethnicity 56

Degree & Certificate Trends..... 57

Grade Distribution 58

Grade Distribution Trends 58

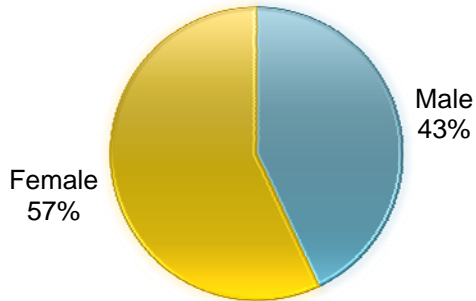
Fall to Fall Retention by Ethnicity 59

Retention of First-Time, Full-Time Degree-Seeking Freshmen by Ethnicity 60

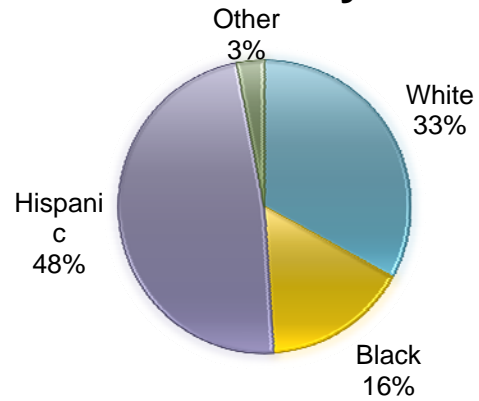
Retention by Department and Self-Declared Major 61

Fall 2008: 9,852 Students

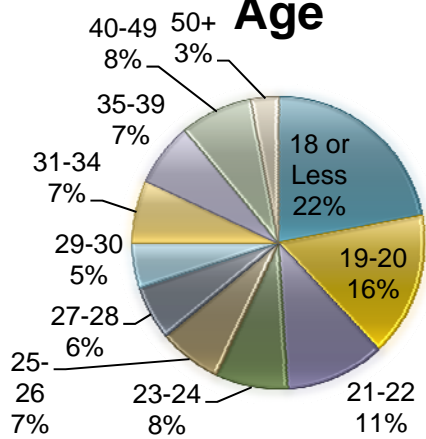
Gender



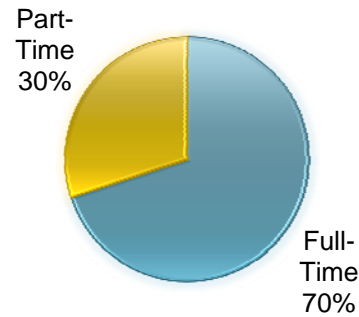
Ethnicity



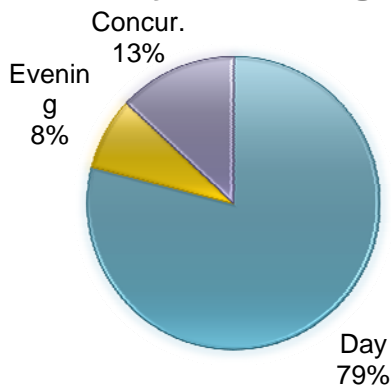
Age



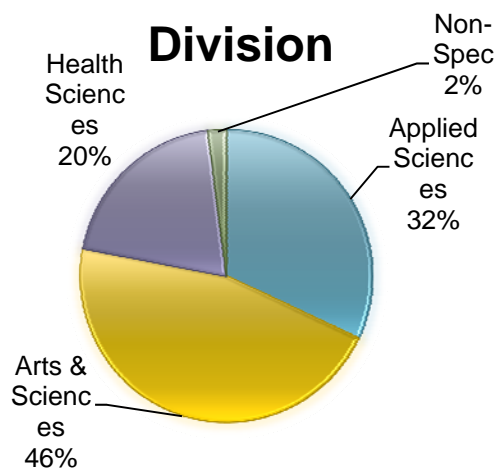
Part-Time/Full-Time



Day/Evening

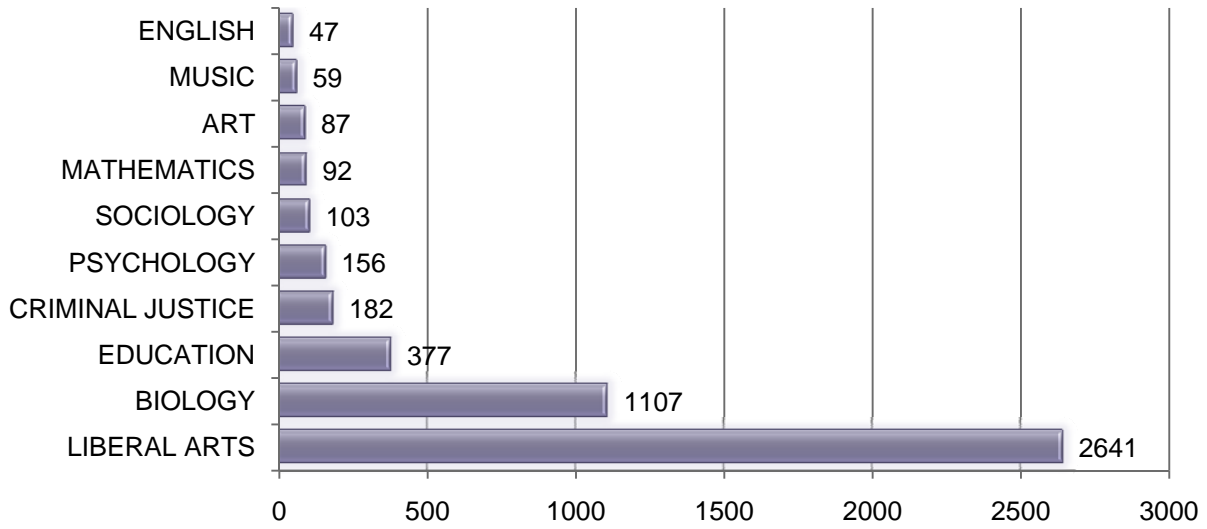


Division

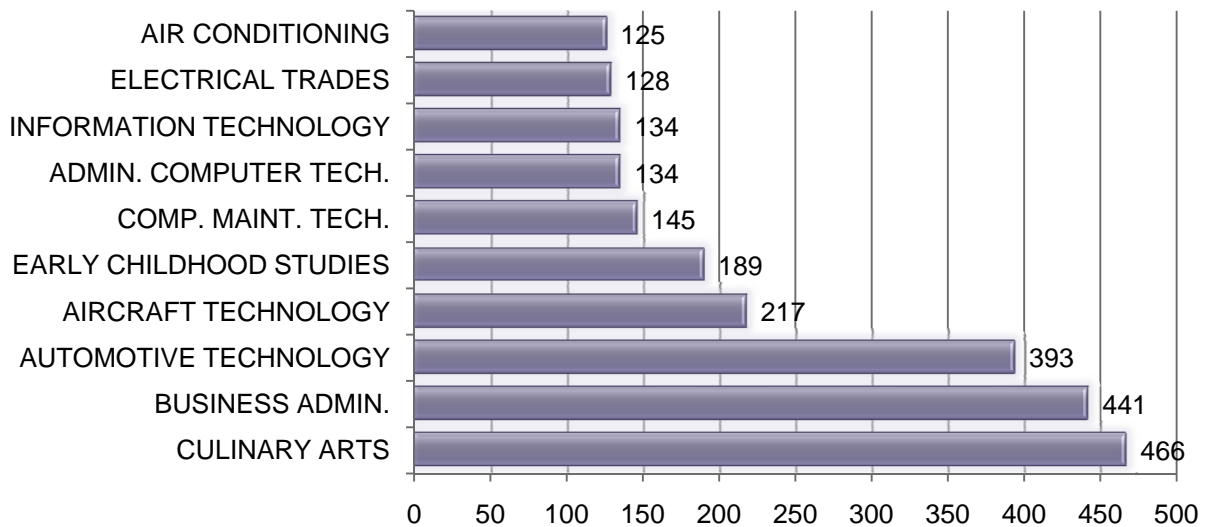


Source: CBM001; RCA003

Top 10 Arts & Science Majors Fall 2008



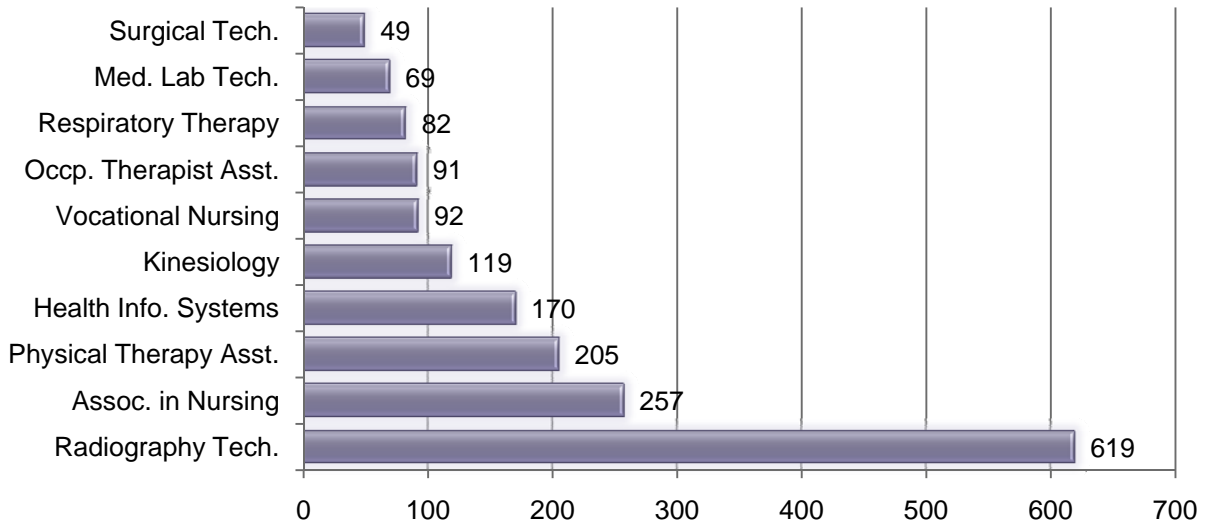
Top 10 Applied Science & Technology Majors Fall 2008



Source: SIS+

Top 10 Health Sciences Majors

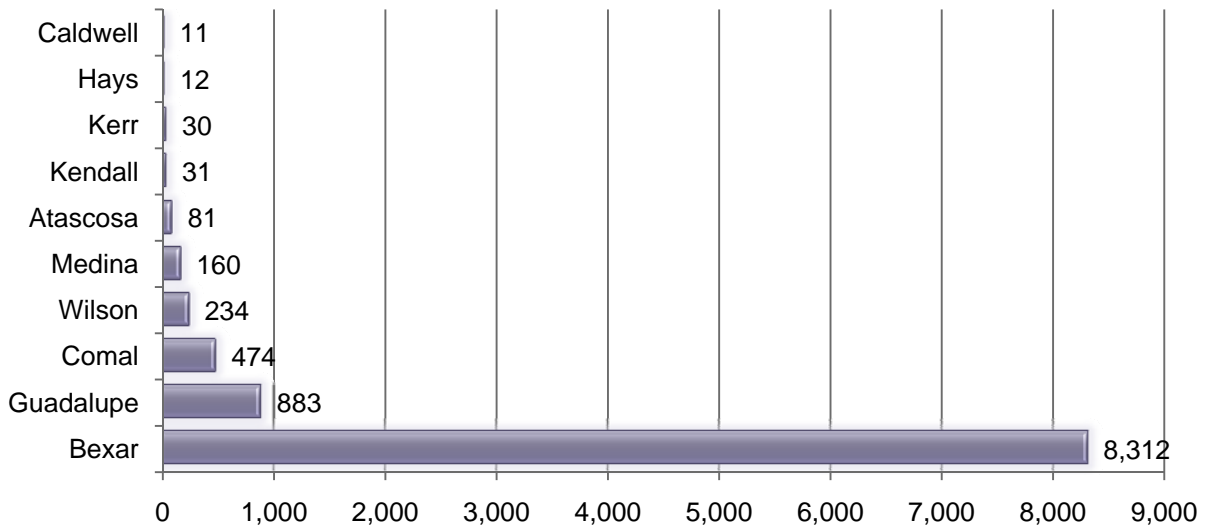
Fall 2008



Source: SIS+

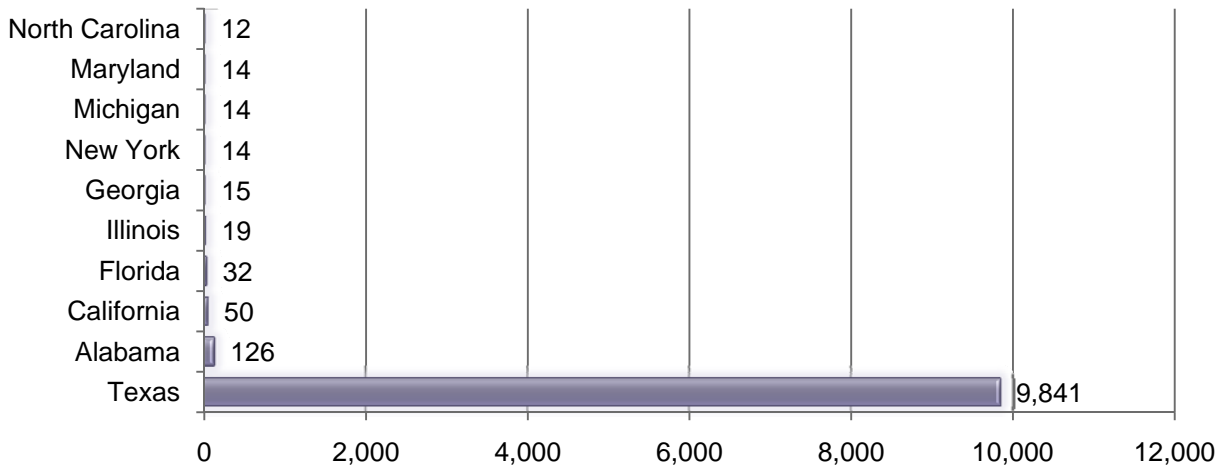
Top 10 Counties of Residence

Fall 2008



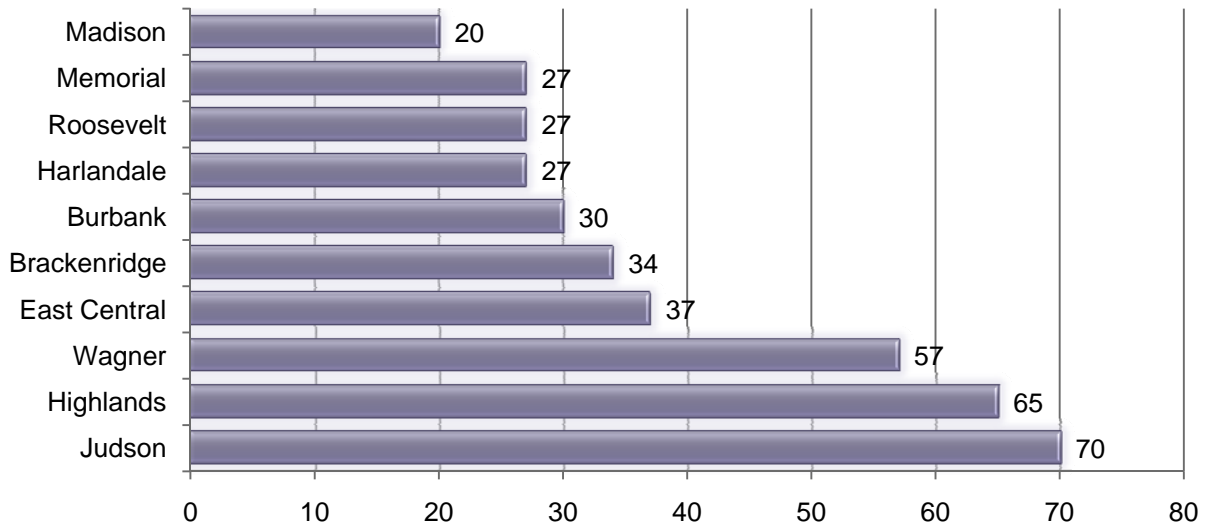
Source: RCA003

Top 10 States of Residence Fall 2008



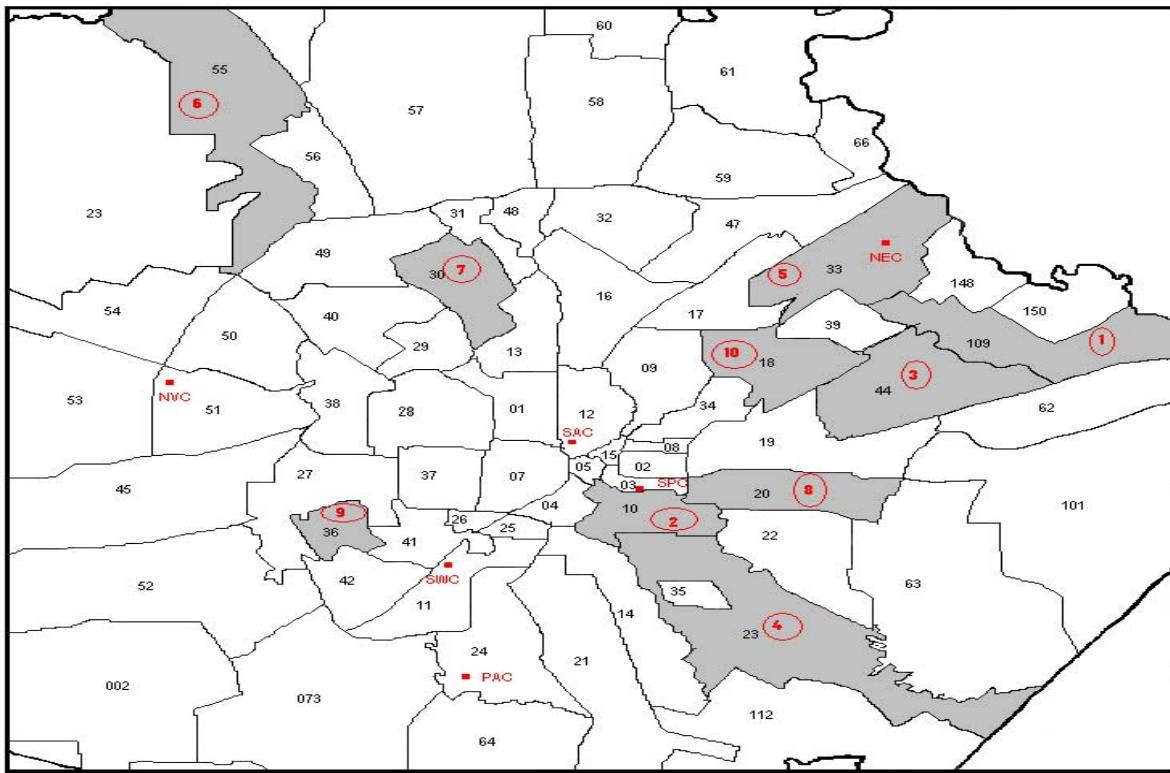
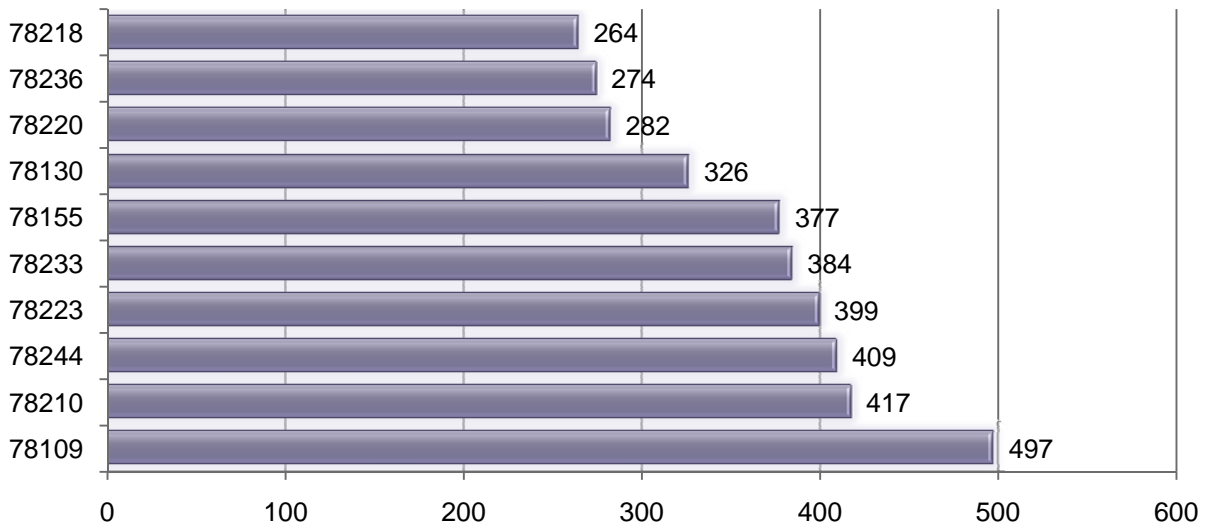
Source: RCA003

Top 10 Feeder High Schools Fall 2008



Reflects High School Graduates Within One Year.

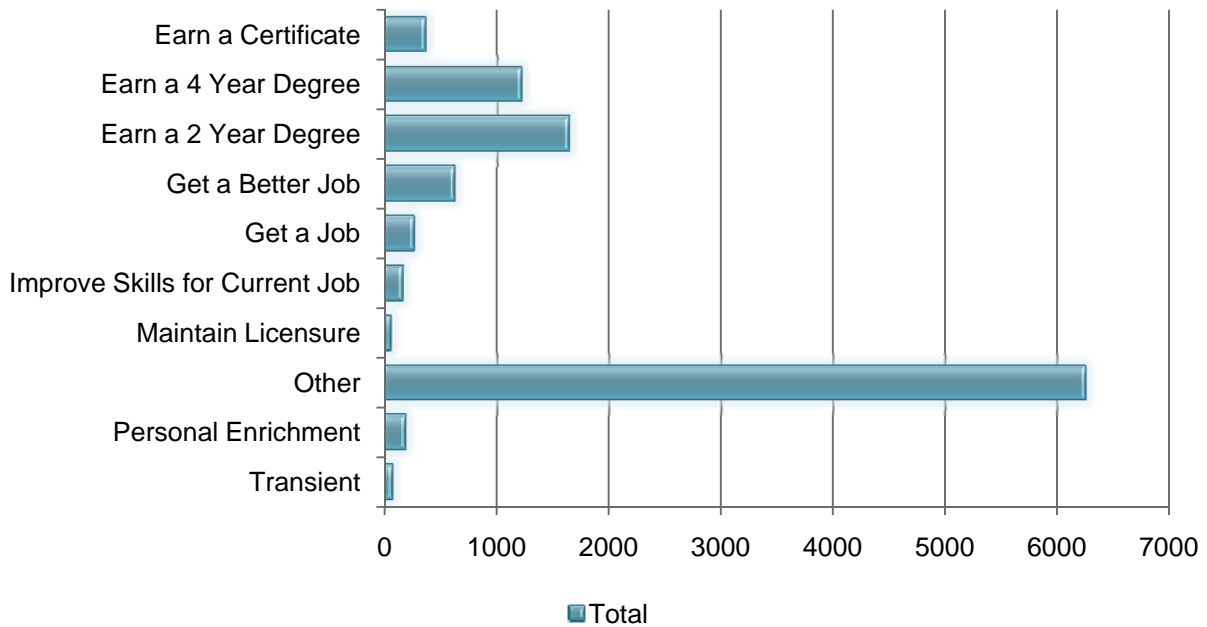
Top 10 Feeder Zip Codes Fall 2008



Source: SIS+; Includes Flex II Students

Student Objective in Attending St. Philip’s College – Fall 2008

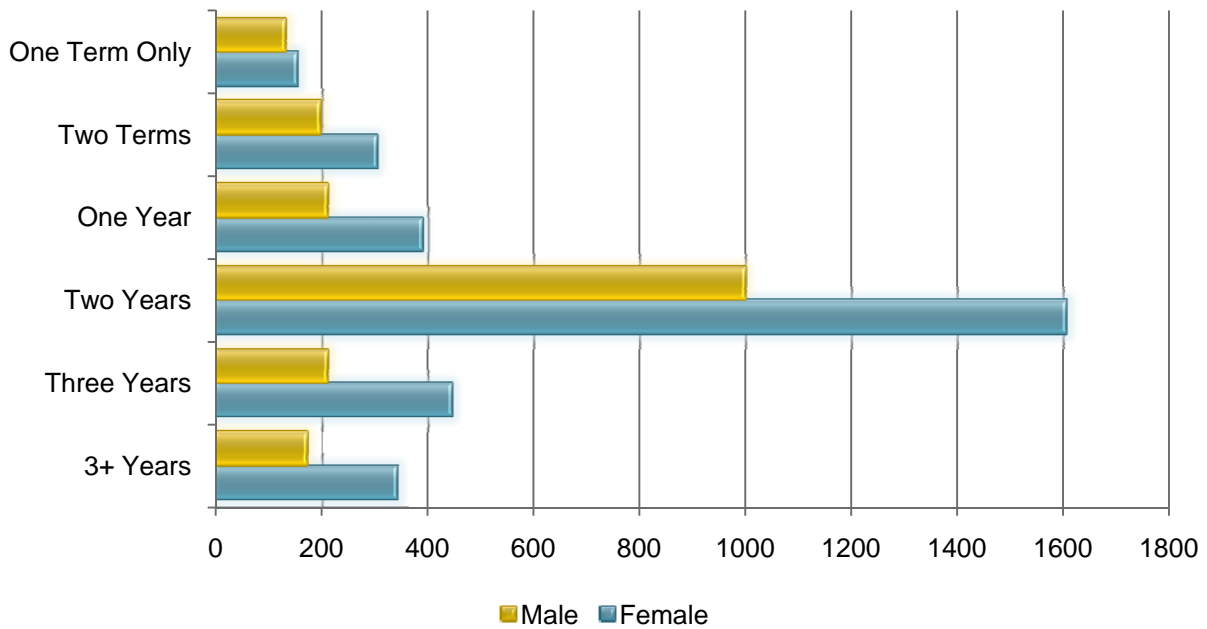
Objective	Female	Male	Total	%
Earn a Certificate	221	134	355	3.3%
Earn a 4 Year Degree	774	440	1,214	11.3%
Earn a 2 Year Degree	994	648	1,642	15.2%
Get a Better Job	412	204	616	5.7%
Get a Job	151	104	255	2.4%
Improve Skills for Current Job	103	53	156	1.45%
Maintain Licensure	34	12	46	.43%
Other	3,263	2,989	6,252	58%
Personal Enrichment	119	61	180	1.7%
Transient	46	17	63	.6%



Source: AFA020; Student Tracking Survey

Intended Duration of Enrollment – Fall 2008

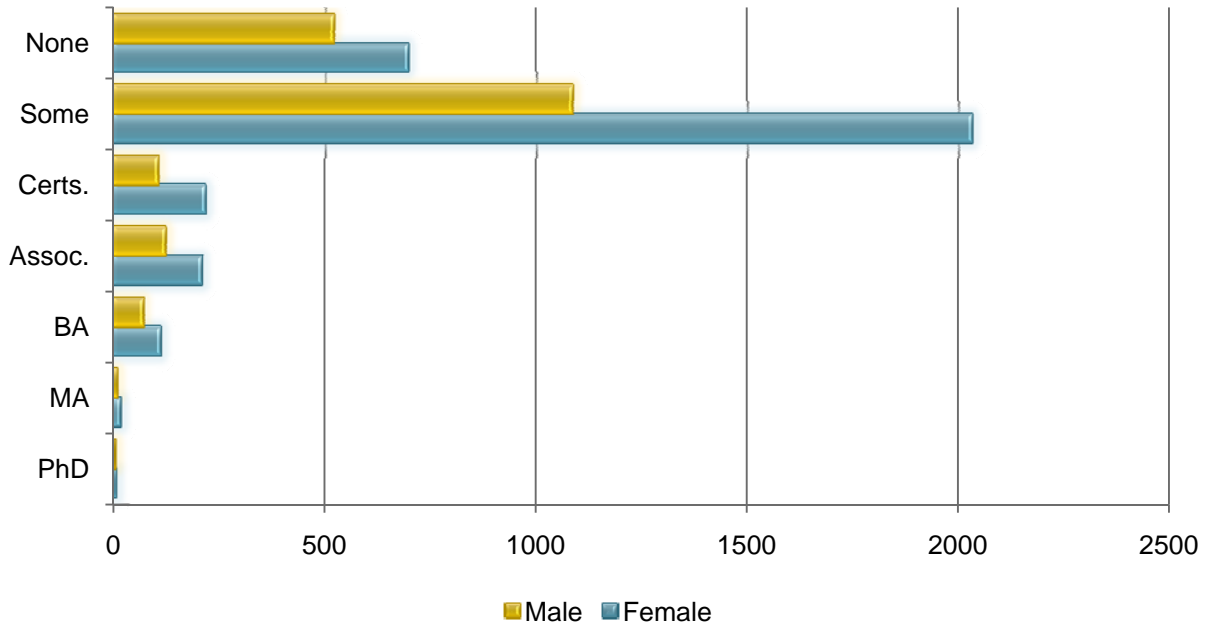
Intended Duration of Enrollment	Female	Male	Total	%
One Term Only	154	86	240	2.2%
Two Terms	303	197	500	4.6%
One Year	389	211	600	5.6%
Two Years	1,606	999	2,605	24.6%
Three Years	445	211	656	6.1%
3+ Years	342	172	514	4.8%



Source: AFA020; Student Tracking Survey

Academic Experience on Entry – Fall 2008

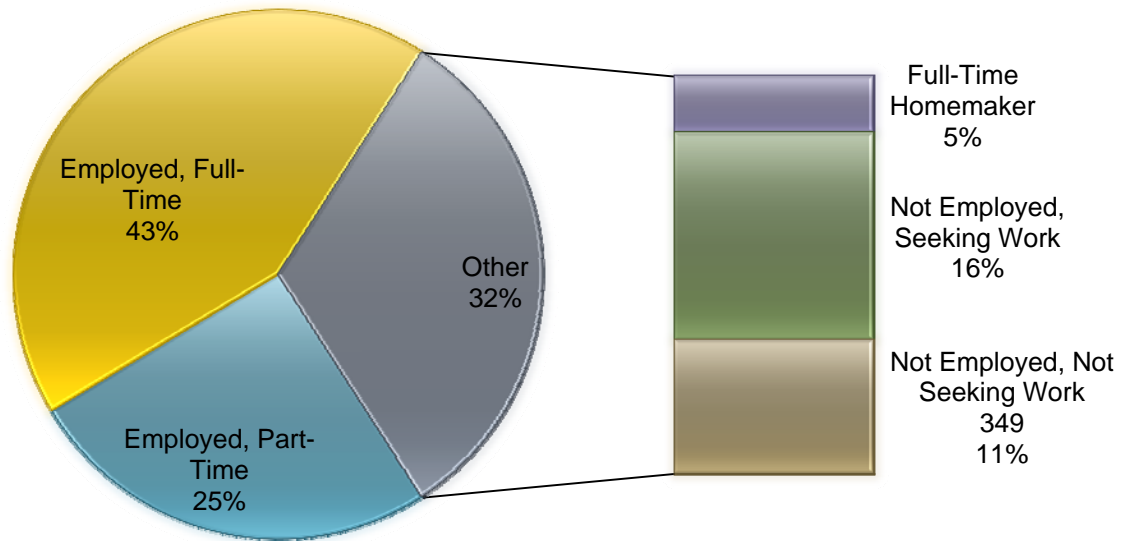
Academic Experience on Entry	Female	Male	Total	%
None	695	519	1,214	3.4%
Some College	2,031	1,085	3,116	29%
College Work with Certificate	215	105	320	3%
Associate’s Degree	208	121	329	3.1%
Bachelor’s Degree	109	69	178	1.7%
Master’s Degree	15	7	22	.2%
Doctorate Degree	4	3	7	.5%



Source: AFA020; Student Tracking Survey

Student Employment Status- Fall 2008

Student Employment Status	Female	Male	Total	%
Employed, Full-Time	1,397	866	2,263	21%
Employed, Part-Time	834	433	1,267	11.8%
Not Employed, Not Seeking Work	349	198	547	5.1%
Not Employed, Seeking Work	540	394	934	8.7%
Full-Time Homemaker	149	15	164	1.5%



Source: AFA020; Student Tracking Survey

Financial Aid Awards, FY 2008-2009

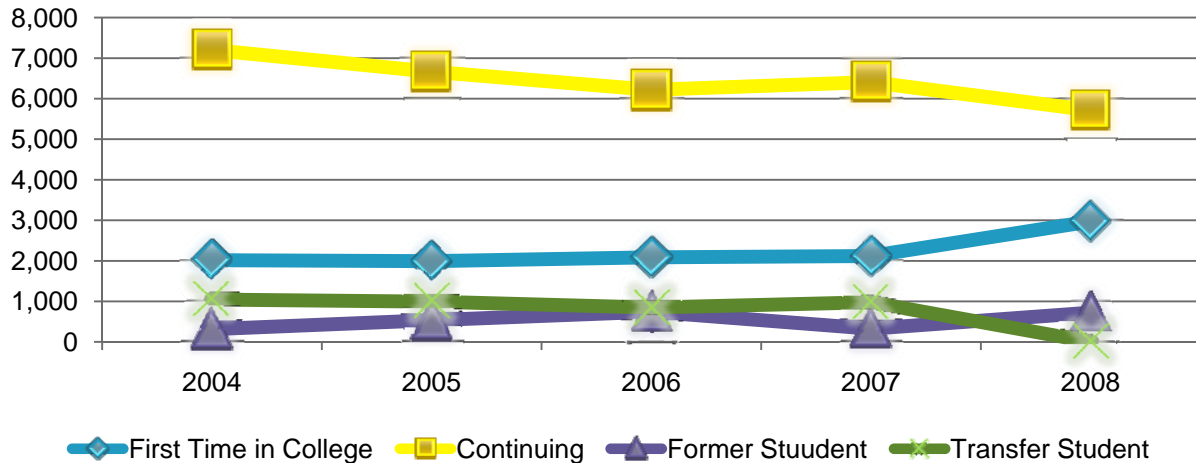
Category	Amount	Number of Awards
Grants	\$18,360,717	8,314
Scholarships	\$738,465	945
Federal Work Study	\$651,780	252
Loans	\$6,708,707	3,357
Other	\$62,922	69
Total	\$24,179,475	*12,983

*Total Duplicated Students
Unduplicated Students: 6,577

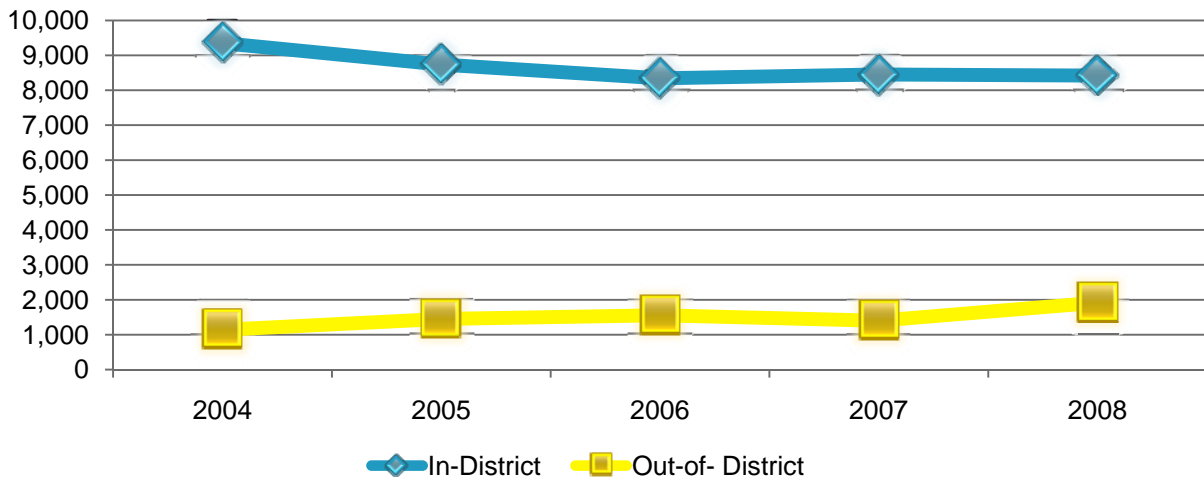
Source: SFA037

Registration – Fall 2004 to Fall 2008

Student Registered as:	2004	2005	2006	2007	2008
First Time in College	2,015	1,992	2,086	2,117	2,973
Continuing	7,201	6,665	6,220	6,410	5,715
Former Student	315	536	744	327	721
Transfer Student	1,044	994	849	977	928



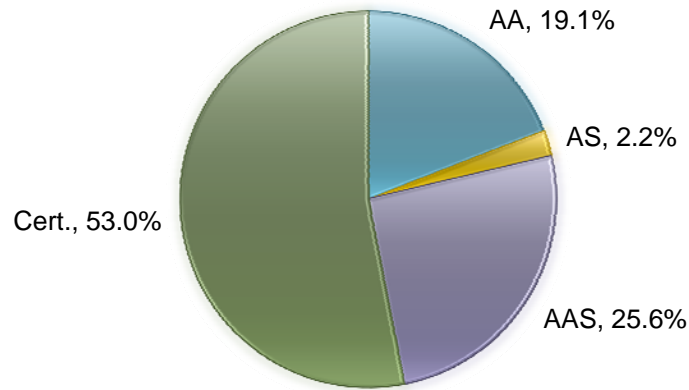
Registration Type:	2004	2005	2006	2007	2008
In-District	9,351	8,736	8,342	8,451	8,421
Out-of-District	1,141	1,451	1,557	1,401	1,916



Source: RCA003

2007-08 Graduation

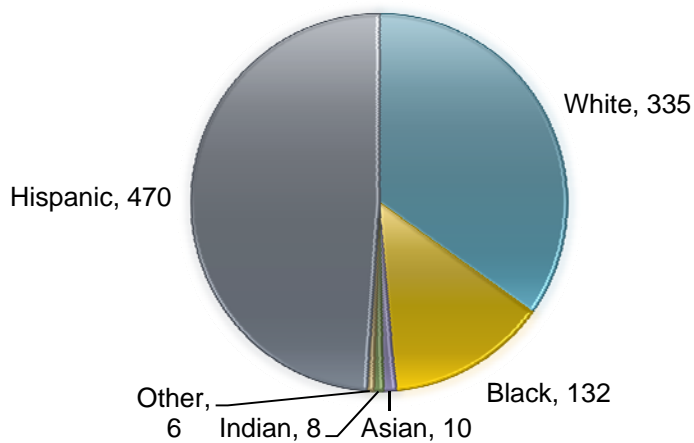
Degrees & Certificates Awarded



Source: CBM009

2007-08 Graduates

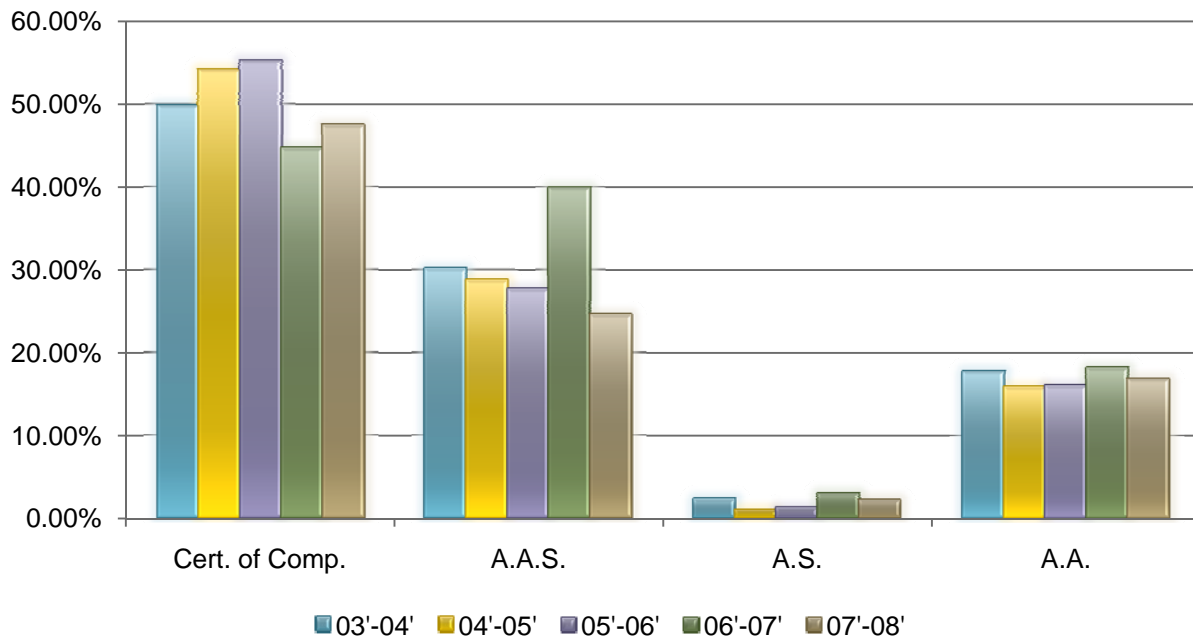
Graduates by Ethnicity



Source: CBM009

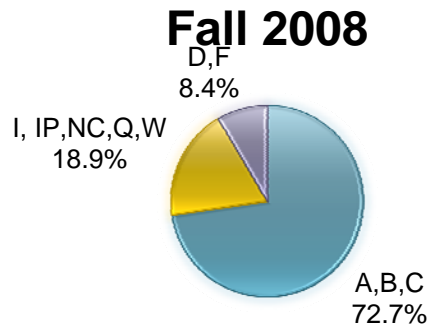
Degrees & Certificates Awarded: 2003-04 to 2007-08

Degree or Certificate	2003-04	2004-05	2005-06	2006-07	2007-08
AA	17.8%	15.9%	16.0%	18.2%	16.9%
AS	2.3%	1.2%	1.2%	3.0%	2.2%
AAS	30.1%	28.7%	27.6%	39.9%	24.5%
Cert. of Comp.	49.8%	54.1%	55.2%	44.6%	47.4%
Total	1,042	1,288	1,432	1,417	1,664

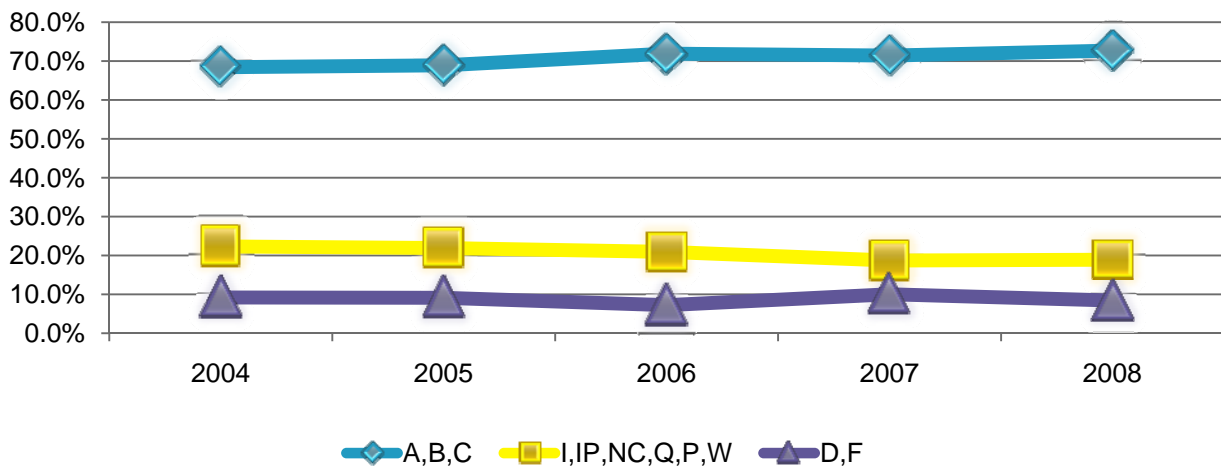


Source: SIS+

Grade Distribution



FALL	A	B	C	PRODUCTIVE GRADE	D	F	COMPLETION RATE	I	IP	NC	Q	P	W	TOTAL
2004	10,602 30.9%	8,293 24.2%	4,563 13.3%	23,458 68.4%	966 2.8%	2,199 6.4%	26,623 77.6%	64 0.2%	1,274 3.7%	17 0.0%	0 0.0%	3 0.0%	6,321 18.4%	34,302 100%
2005	10,043 31.1%	7,730 24.0%	4,444 13.8%	22,217 68.9%	885 2.7%	2,069 6.4%	25,171 78.0%	5 0.0%	1,251 3.9%	8 0.0%	0 0.0%	0 0.0%	5,820 18.0%	32,255 100%
2006	10,495 33.3%	7,769 24.7%	4,382 13.9%	22,646 71.9%	807 2.6%	1,473 4.7%	24,926 79.1%	382 1.2%	1,015 3.2%	30 0.1%	1 0.0%	0 0.0%	5,143 16.3%	31,497 100%
2007	9,759 32.9%	7,609 25.5%	4,408 14.5%	21,776 71.4%	817 2.7%	2,215 7.3%	24,808 81.3%	0 0.0%	1,291 4.2%	18 0.0%	0 0.0%	0 0.0%	4,388 14.4%	30,505 100%
2008	10,133 33.6%	7,717 25.1%	4,493 15.2%	22,343 72.7%	809 2.6%	1,767 5.7%	24,919 81.1%	407 1.3%	1,089 3.5%	11 0.0%	5 0.0%	0 0.0%	4,307 14%	30,738 100%



Source: RFA696

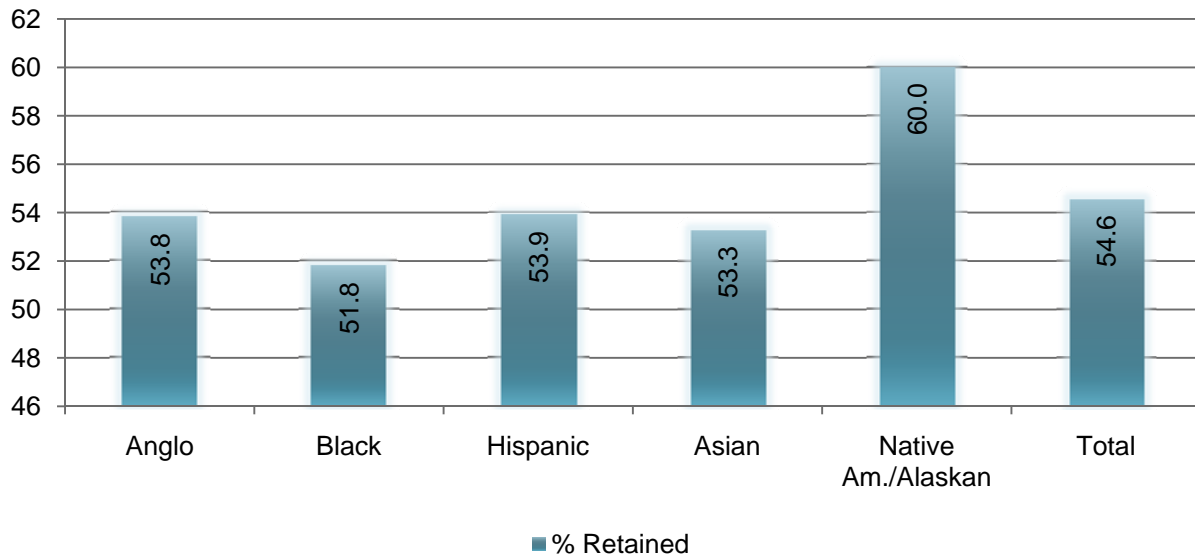
Fall to Fall Retention

% of SPC Students Who Reenrolled at SPC the Next Fall (Non-Graduates)	2003-04	2004-05	2005-06	2006-07	2007-08
Anglo	44.2%	39.4%	41.0%	43.6%	41.0%
Black	43.9%	42.6%	41.7%	42.7%	41.0%
Hispanic	45.9%	44.6%	43.5%	46.1%	44.3%
Asian	43.6%	48.1%	46.0%	47.0%	44.9%
Native American/ Alaskan	45.0%	48.7%	32.2%	31.7%	40.0%
Non-Resident	55.6%	37.5%	53.8%	60.0%	30.0%
Total AC- SPC	45.0%	42.7%	42.4%	44.6%	42.6%
Total Texas	42.6%	42.3%	41.9%	42.2%	42.4%
% of Students Not Found in Any State College the Next Fall (Non-Graduates)	2003-04	2004-05	2005-06	2006-07	2007-08
Anglo	42.0%	46.2%	43.0%	42.2%	39.5%
Black	47.0%	49.8%	47.9%	46.8%	48.5%
Hispanic	44.5%	45.8%	46.2%	44.7%	44.2%
Asian	46.1%	43.1%	41.5%	39.9%	41.6%
Native American/ Alaskan	47.5%	46.2%	49.2%	58.5%	48.6%
Non-Resident	33.3%	62.5%	23.1%	30.0%	60.0%
Total AC- SPC	44.2%	46.6%	45.3%	44.2%	43.3%
Total Texas	40.3%	40.7%	40.8%	40.1%	40.0%

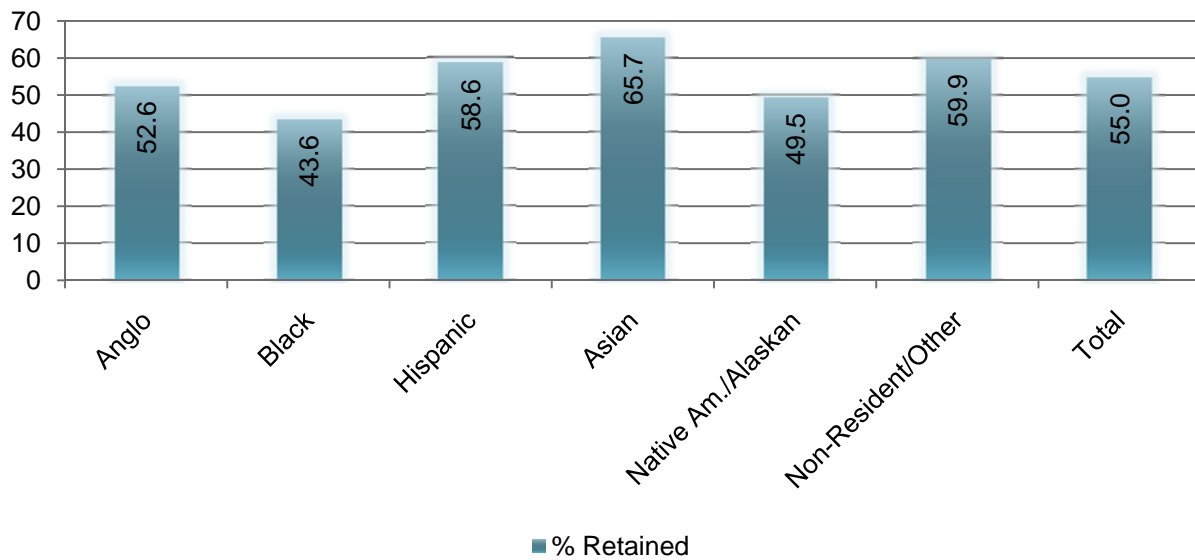
Source: THECB; transfer to private or out-of-state institutions not considered.

Retention of First-Time* Degree-Seeking Freshman by Ethnicity – Fall 2007

St. Philip's College



Texas



*A student who is enrolled in 12 or more credit hours.

Source: THECB (non-degree seeking students not considered)

**STUDENT RETENTION BY DEPARTMENT AND SELF-DECLARED MAJOR
2008-2009**

Division, Department, Major	Fall Enrollment	Fall Completion	Fall Within Semester Retention Rate	Percentage of Fall Completers Enrolled in Spring	Students Completing Fall and Enrolled Spring	Students Completing Spring Semester	Spring Within Semester Retention Rate	Continuous Enrollment Fall to End of Spring
APPLIED SCIENCE & TECHNOLOGY								
ALLIED CONSTRUCTION								
Air Conditioning	124	121	97.6%	79	65.3%	78	98.7%	62.9%
Drafting	120	111	92.5%	92	82.9%	86	93.5%	71.7%
Electrical Trades	128	116	90.6%	92	79.3%	88	95.7%	68.8%
Home Building	67	66	98.5%	54	81.8%	52	96.3%	77.6%
Interior Design	1	1	100.0%	1	100.0%	1	100.0%	100.0%
Plumbing	19	18	94.7%	11	61.1%	11	100.0%	57.9%
<i>Total Allied Construction</i>	<i>459</i>	<i>433</i>	<i>94.3%</i>	<i>329</i>	<i>76.0%</i>	<i>316</i>	<i>96.0%</i>	<i>68.8%</i>
AUTOMOTIVE TECHNOLOGY								
Automotive Service Education Program	20	20	100.0%	18	90.0%	18	100.0%	90.0%
Automotive Technology	391	371	94.9%	287	77.4%	277	96.5%	70.8%
Ford Asset	13	13	100.0%	11	94.6%	11	100.0%	84.6%
<i>Total Automotive Technology</i>	<i>424</i>	<i>404</i>	<i>95.3%</i>	<i>316</i>	<i>78.2%</i>	<i>306</i>	<i>96.8%</i>	<i>72.2%</i>

**STUDENT RETENTION BY DEPARTMENT AND SELF-DECLARED MAJOR
2008-2009
(Continued)**

Division, Department, Major	Fall Enrollment	Fall Completion	Fall Within Semester Retention Rate	Percentage of Fall Completers Enrolled in Spring	Students Completing Fall and Enrolled Spring	Students Completing Spring Semester	Spring Within Semester Retention Rate	Continuous Enrollment Fall to End of Spring
BUSINESS INFORMATION SOLUTIONS								
Accounting Information Solutions Tech.	93	87	93.5%	64	73.6%	60	93.8%	64.5%
Administrative Computer Technician	129	121	93.8%	76	62.8%	74	97.4%	57.4%
Business Administration	438	417	95.2%	292	70.0%	273	93.5%	62.3%
Business Management	119	114	95.8%	83	72.8%	82	98.8%	68.9%
Computer Science	90	87	96.7%	52	59.8%	48	92.3%	53.3%
Information Technology	37	35	94.6%	28	80.0%	27	96.4%	73.0%
<i>Total Business Information Solutions</i>	<i>906</i>	<i>861</i>	<i>95.0%</i>	<i>595</i>	<i>69.1%</i>	<i>564</i>	<i>94.8%</i>	<i>62.3%</i>
COUNSELING								
General	80	75	93.8%	56	74.7%	56	100.00%	70.0%
<i>Total Counseling</i>	<i>80</i>	<i>75</i>	<i>93.8%</i>	<i>56</i>	<i>74.7%</i>	<i>56</i>	<i>100.0%</i>	<i>70.0%</i>
EARLY CHILDHOOD & FAMILY STUDIES								
Early Childhood & Family Studies	190	184	96.8%	138	75.0%	129	93.5%	67.9%
<i>Total Early Childhood & Family Studies</i>	<i>190</i>	<i>184</i>	<i>96.8%</i>	<i>138</i>	<i>75.0%</i>	<i>129</i>	<i>93.5%</i>	<i>67.9%</i>

**STUDENT RETENTION BY DEPARTMENT AND SELF-DECLARED MAJOR
2008-2009
(Continued)**

Division, Department, Major	Fall Enrollment	Fall Completion	Fall Within Semester Retention Rate	Percentage of Fall Completers Enrolled in Spring	Students Completing Fall and Enrolled Spring	Students Completing Spring Semester	Spring Within Semester Retention Rate	Continuous Enrollment Fall to End of Spring
ELECTRONICS & INFO. TECHNOLOGY								
Bio-Medical Equipment Technology	34	33	97.1%	24	72.7%	24	100.0%	70.6%
Computer Maintenance Technology	145	140	96.6%	102	72.9%	98	96.1%	67.6%
Electronics	7	7	100.0%	5	71.4%	5	100.0%	71.4%
Information Technology	135	131	97.0%	100	76.3%	89	89.0%	65.9%
<i>Total Electronic & Info. Technology</i>	321	311	96.95	231	74.3%	216	93.5%	67.3%
MULTI-MODAL TRANSPORTATION TECH.								
Aircraft Technology	209	204	97.6%	155	76.0%	151	97.4%	72.2%
Diesel Technology	81	80	98.8%	65	81.3%	64	98.5%	79.0%
Railroad Technology	2	1	50.0%	0	0.0%	0	0.0%	0.0%
<i>Total Multi-Modal Transportation Tech.</i>	292	285	97.6%	220	77.2%	215	97.7%	73.6
REPAIR & MANUFACTURING TECH.								
Auto Body Repair	108	103	95.4%	87	84.5%	85	97.7%	78.7%
Manufacturing Engineering Technology	65	62	95.4%	54	87.1%	50	92.6%	76.9%

**STUDENT RETENTION BY DEPARTMENT AND SELF-DECLARED MAJOR
2008-2009
(Continued)**

Division, Department, Major	Fall Enrollment	Fall Completion	Fall Within Semester Retention Rate	Percentage of Fall Completers Enrolled in Spring	Students Completing Fall and Enrolled Spring	Students Completing Spring Semester	Spring Within Semester Retention Rate	Continuous Enrollment Fall to End of Spring
Welding	79	73	92.4%	53	72.6%	51	96.2%	64.6%
<i>Total Repair & Manufacturing Technology</i>	<i>252</i>	<i>238</i>	<i>94.4%</i>	<i>194</i>	<i>81.5%</i>	<i>186</i>	<i>95.9%</i>	<i>73.8%</i>
TOURISM, HOSPITALITY & CULINARY ARTS								
Baking & Pastry Arts	37	35	94.6%	32	91.4%	31	96.9%	83.8%
Culinary Arts	427	414	97.0	315	76.1	303	96.2	71.0
Hotel Operations	30	29	96.7%	24	82.8%	24	100.0%	80.0%
Restaurant Operations	22	22	100.0%	16	72.7%	14	87.5%	63.6%
Tourism	20	20	100.0%	17	85.0%	17	100.0%	85.0%
<i>Total Tourism, Hospitality & Culinary Arts</i>	<i>536</i>	<i>520</i>	<i>97.0%</i>	<i>404</i>	<i>77.7%</i>	<i>389</i>	<i>96.3%</i>	<i>72.6%</i>
<i>TOTAL APPLIED SCIENCE & TECHNOLOGY</i>	<i>3,460</i>	<i>3,311</i>	<i>95.7%</i>	<i>2,483</i>	<i>75.0%</i>	<i>2,377</i>	<i>95.7%</i>	<i>68.7%</i>
ARTS & SCIENCES								
BEHAVIORAL SCIENCES								
Criminal Justice	182	171	94.0%	116	67.8%	109	94.0%	59.9%
Philosophy	5	5	100.0%	4	80.0%	4	100.0%	80.0%

**STUDENT RETENTION BY DEPARTMENT AND SELF-DECLARED MAJOR
2008-2009
(Continued)**

Division, Department, Major	Fall Enrollment	Fall Completion	Fall Within Semester Retention Rate	Percentage of Fall Completers Enrolled in Spring	Students Completing Fall and Enrolled Spring	Students Completing Spring Semester	Spring Within Semester Retention Rate	Continuous Enrollment Fall to End of Spring
Psychology	159	153	96.2%	100	65.4%	93	93.0%	58.5%
Sociology	102	94	92.2%	70	74.5%	65	92.9%	63.7%
<i>Total Behavioral Sciences</i>	<i>448</i>	<i>423</i>	<i>94.4%</i>	<i>290</i>	<i>68.6%</i>	<i>271</i>	<i>93.4%</i>	<i>60.5%</i>
COMMUNICATIONS & LEARNING								
Education	379	356	93.9%	234	65.7%	227	97.0%	59.9%
English	46	44	95.7%	32	72.7%	30	93.8%	65.2%
Foreign Languages	29	27	93.1%	17	63.0%	16	94.1%	55.2%
Speech	13	12	92.3%	4	33.3%	4	100.0%	30.8%
<i>Total Communications & Learning</i>	<i>467</i>	<i>439</i>	<i>94.0%</i>	<i>287</i>	<i>65.4%</i>	<i>277</i>	<i>96.5%</i>	<i>59.3%</i>
COUNSELING								
General	18	16	88.9%	15	93.8%	15	100.0%	83.3%
Liberal Arts	2,647	2,516	95.1%	1,966	78.1%	1,893	96.3%	71.6%
<i>Total Counseling</i>	<i>2,665</i>	<i>2,532</i>	<i>95.0%</i>	<i>1,981</i>	<i>78.2%</i>	<i>1,908</i>	<i>96.3%</i>	<i>71.6%</i>

STUDENT RETENTION BY DEPARTMENT AND SELF-DECLARED MAJOR

2008-2009

(Continued)

Division, Department, Major	Fall Enrollment	Fall Completion	Fall Within Semester Retention Rate	Percentage of Fall Completers Enrolled in Spring	Students Completing Fall and Enrolled Spring	Students Completing Spring Semester	Spring Within Semester Retention Rate	Continuous Enrollment Fall to End of Spring
FINE ARTS								
Art	87	84	96.6%	60	71.4%	59	98.3%	67.8%
Drama	21	20	95.2%	12	60.0%	12	100.0%	57.1%
Music	59	56	94.9%	45	80.4%	43	95.6%	72.9%
<i>Total Fine Arts</i>	<i>167</i>	<i>160</i>	<i>95.8%</i>	<i>117</i>	<i>73.1%</i>	<i>114</i>	<i>97.4%</i>	<i>68.3%</i>
MATHEMATICS								
Mathematics	91	89	97.8%	57	64.0%	56	98.2%	61.5%
<i>Total Mathematics</i>	<i>91</i>	<i>89</i>	<i>97.8%</i>	<i>57</i>	<i>64.0%</i>	<i>56</i>	<i>98.2%</i>	<i>61.5%</i>
NATURAL SCIENCES								
Biology	1,106	1,054	95.3%	695	65.9%	675	97.1%	61.0%
Chemistry	37	37	100.0%	24	64.9%	24	100.0%	64.9%
<i>Total Natural Sciences</i>	<i>1,143</i>	<i>1,091</i>	<i>95.5%</i>	<i>719</i>	<i>65.9%</i>	<i>699</i>	<i>97.2%</i>	<i>61.2%</i>

**STUDENT RETENTION BY DEPARTMENT AND SELF-DECLARED MAJOR
2008-2009
(Continued)**

Division, Department, Major	Fall Enrollment	Fall Completion	Fall Within Semester Retention Rate	Percentage of Fall Completers Enrolled in Spring	Students Completing Fall and Enrolled Spring	Students Completing Spring Semester	Spring Within Semester Retention Rate	Continuous Enrollment Fall to End of Spring
SOCIAL SCIENCES								
Economics	21	20	95.2%	14	70.0%	13	92.9%	61.9%
Government	10	9	90.0%	5	55.6%	5	100.0%	50.0%
History	36	33	91.7%	22	66.7%	22	100.0%	61.1%
Humanities	9	9	100.0%	5	55.6%	5	100.0%	55.6%
Pre-Law	44	41	93.2%	33	80.5%	32	97.0%	72.7%
<i>Total Social Sciences</i>	<i>120</i>	<i>112</i>	<i>93.3%</i>	<i>79</i>	<i>70.5%</i>	<i>77</i>	<i>97.5%</i>	<i>64.2%</i>
TOTAL ARTS & SCIENCES	5,101	4,846	95.0%	3,530	72.8%	3,402	96.4%	66.7%
HEALTH SCIENCES								
ALLIED HEALTH								
Health Information Systems	170	158	92.9%	124	78.5%	116	93.5%	68.2%
Histological Technology	75	14	93.3%	10	71.4%	10	100.0%	66.7%
Kinesiology	119	113	95.0%	80	70.8%	77	96.2%	64.7%
Medical Lab Technician	69	66	95.7%	51	77.3%	47	92.2%	68.1%
Occupation Therapy Assistant	91	89	97.8%	77	86.5%	77	100.0%	84.6%

**STUDENT RETENTION BY DEPARTMENT AND SELF-DECLARED MAJOR
2008-2009
(Continued)**

Division, Department, Major	Fall Enrollment	Fall Completion	Fall Within Semester Retention Rate	Percentage of Fall Completers Enrolled in Spring	Students Completing Fall and Enrolled Spring	Students Completing Spring Semester	Spring Within Semester Retention Rate	Continuous Enrollment Fall to End of Spring
Physical Therapy Assistant	206	196	95.1%	147	75.0%	143	97.3%	69.4%
Radiography Technology	506	489	96.6%	356	72.8%	346	97.2%	68.4%
Respiratory Therapy	82	77	93.9%	62	80.5%	60	96.8%	73.2%
Sonography	112	107	95.5%	91	85.0%	88	96.7%	78.6%
Surgical Technologist	49	47	95.9%	36	76.6%	32	88.9%	65.3%
<i>Total Allied Health</i>	<i>1,419</i>	<i>1,356</i>	<i>95.6%</i>	<i>1,034</i>	<i>76.3%</i>	<i>996</i>	<i>96.3%</i>	<i>70.2%</i>
ASSOCIATE DEGREE IN NURSING								
Associate Degree Nursing	256	243	94.9%	168	69.1%	161	95.8%	62.9%
<i>Total Associate Degree Nursing</i>	<i>256</i>	<i>243</i>	<i>94.9%</i>	<i>168</i>	<i>69.1%</i>	<i>161</i>	<i>95.8%</i>	<i>62.9%</i>
VOCATIONAL NURSING								
Vocational Nursing	320	310	96.9%	198	63.9%	182	91.9%	56.9%
<i>Total Vocational Nursing</i>	<i>320</i>	<i>310</i>	<i>96.9%</i>	<i>198</i>	<i>63.9%</i>	<i>182</i>	<i>91.9%</i>	<i>56.9%</i>
TOTAL HEALTH SCIENCES	1,995	1,909	95.7%	1,400	73.3%	1,339	95.6%	67.1%

**STUDENT RETENTION BY DEPARTMENT AND SELF-DECLARED MAJOR
2008-2009
(Continued)**

Division, Department, Major	Fall Enrollment	Fall Completion	Fall Within Semester Retention Rate	Percentage of Fall Completers Enrolled in Spring	Students Completing Fall and Enrolled Spring	Students Completing Spring Semester	Spring Within Semester Retention Rate	Continuous Enrollment Fall to End of Spring
NON-SPECIFIC								
COUNSELING								
Non-Degree Seeking	44	40	90.9%	28	70.0%	28	100.0%	63.6%
Non-Specific	226	213	94.2%	126	59.2%	120	95.2%	53.1%
<i>Total Counseling</i>	<i>270</i>	<i>253</i>	<i>93.7%</i>	<i>154</i>	<i>60.9%</i>	<i>148</i>	<i>96.1%</i>	<i>54.8%</i>
TOTAL NON-SPECIFIC	270	253	93.7%	154	60.9%	148	96.1%	54.8%
TOTAL	10,826	10,319	95.3%	7,567	73.3%	7,266	96.0%	67.1%

Source: SIS+

PERSONNEL PROFILE

Employee Profile

Full Time Employment by Gender & Classification..... 71

Full Time Employment by Ethnicity & Classification..... 71

Faculty Profile

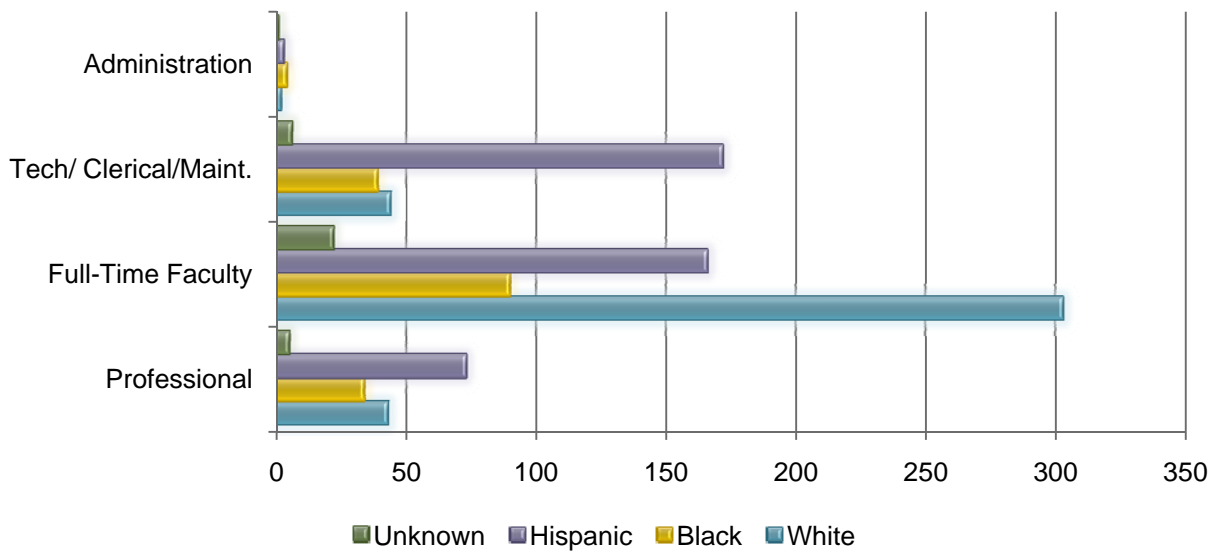
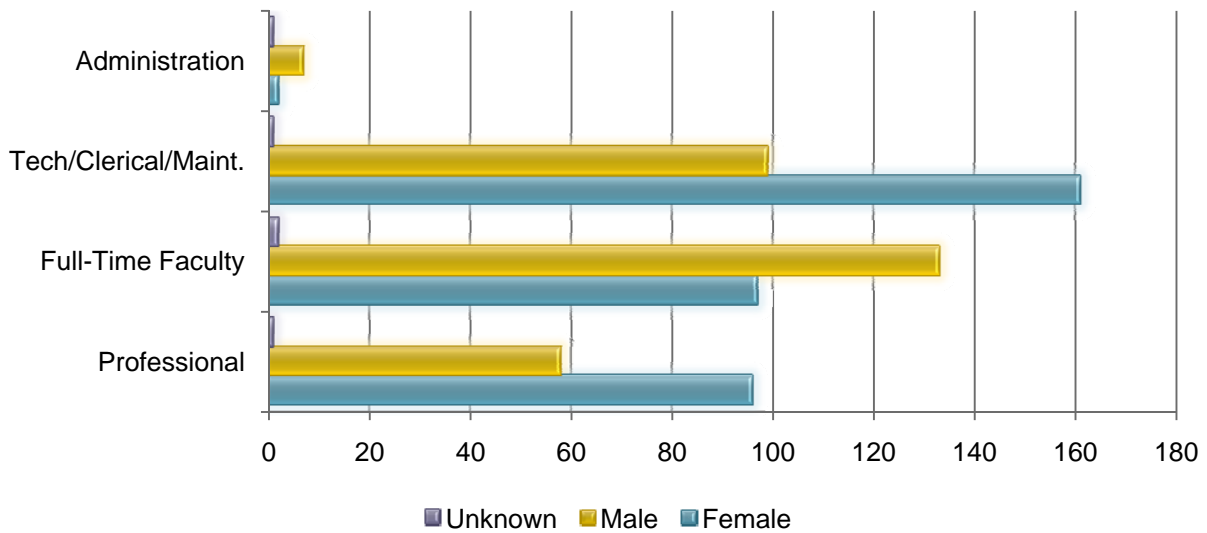
Gender, Ethnicity, Faculty Rank, Highest Degree Earned..... 72

By Division 73

By Department 73

Employee Profile - Fall 2008

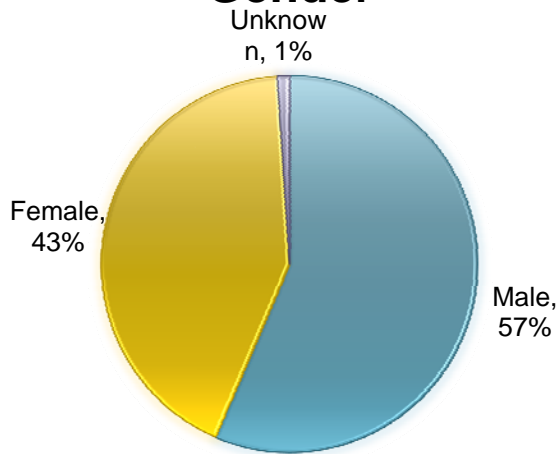
Full-Time Employees	Female	Male	Unknown	White	Black	Hispanic	Unknown
Administration	2	7	1	2	4	3	0
Tech/Clerical/Maintenance	161	99	1	44	39	172	6
Full-Time Faculty	97	133	2	303	90	166	22
Professional	96	58	1	43	34	73	5
Total	356	297	5	430	185	447	35



Source: SIS+

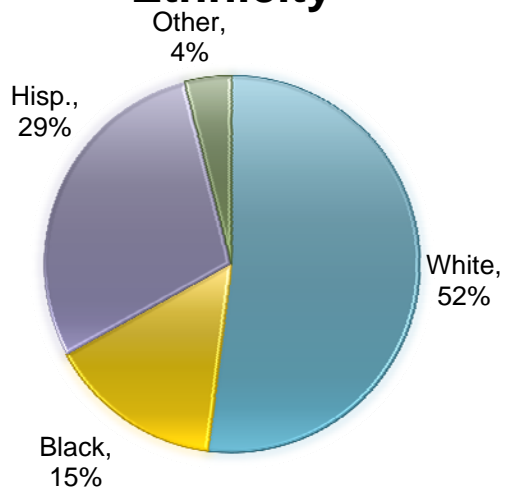
Faculty Profile – Fall 2008

Gender



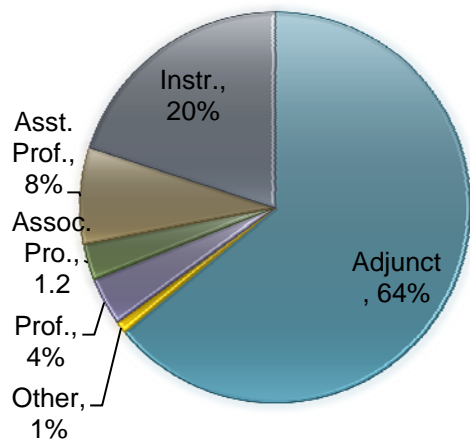
Total: 601

Ethnicity



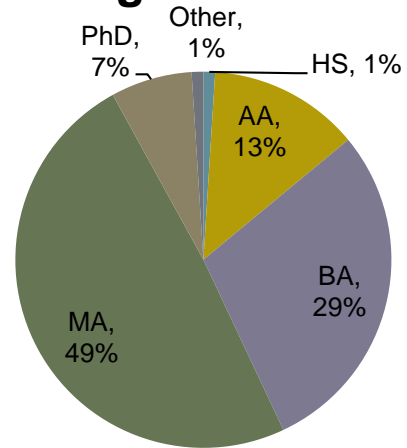
Total: 601

Faculty Rank



Total: 594

Degree Level



Total: 594

Includes Full-Time, Temporary and Adjunct Faculty

Source: SIS+

Faculty by Division/Department – Fall 2008

Division	Full-Time	Full-Time Temp.	Adjunct	Total
Arts & Science	78	1	214	293
Applied Science	62	5	75	142
Health Science	47	5	68	120
Other	17	1	28	46
Total	204	12	385	601

Department	Full-Time	Full-Time Temp.	Adjunct	Total
Allied Construction	11	0	21	32
Automotive Technology	10	0	11	21
Business Information Solutions	10	0	13	23
Electronic & Information Technology	7	0	3	10
Multi-Modal Transportation	10	3	8	21
Repair and Manufacturing Tech.	6	2	11	19
Tourism, Hospitality & Culinary Arts	8	0	8	16
Allied Health	31	0	54	85
Associates Degree Nursing	0	0	0	0
Vocational Nursing	0	0	0	0
Early Childhood & Family Studies	2	0	4	6
Fine Arts	5	0	23	28
Mathematics	17	0	54	71
Behavioral Sciences	5	0	18	23
Natural Sciences	14	0	40	54
Communications & Learning	23	0	45	68
Social Sciences	14	1	34	49
Counseling & Guidance	5	0	24	29
Learning Resources	10	1	0	11

Full-Time to Part-Time Ratio : 57% -43%

Faculty to Student Ratio : 1 : 19

Counselor to Student Ratio : 1 : 1,723

Source: SIS+

FINANCIAL PROFILE

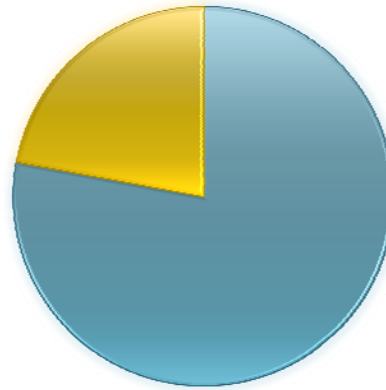
Tuition and Fees 75

Budget, FY 2008-2009 76

Semester Hours Taken	Texas Residents FY 2008-09				Non-Texas Residents & International Students	
	In District		Out-of-District		Tuition	General Fee
	Tuition	General Fee	Tuition	General Fee		
1-6	\$306	\$116	\$570	\$116	\$1098	\$116
7	\$357	\$121	\$665	\$121	\$1,281	\$121
8	\$408	\$121	\$760	\$121	\$1464	\$121
9	\$459		\$855		\$1647	
10	\$510	\$121	\$950	\$121	\$1830	\$121
11	\$561		\$1045		\$2013	
12	\$612	\$121	\$1140	\$121	\$2196	\$121
13	\$663		\$1235		\$2379	
14	\$714	\$121	\$1330	\$121	\$2562	\$121
15	\$765		\$1425		\$2745	
16	\$816	\$121	\$1520	\$121	\$2928	\$121
17	\$867		\$1615		\$3111	
18	\$918	\$121	\$1710	\$121	\$3294	\$121
19	\$969		\$1805		\$3477	
20	\$1020	\$121	\$1900	\$121	\$3660	\$121
21	\$1071		\$1995		\$3843	

Budget FY 2008-2009

St. Philip's College Budget : \$40,369,753



■ Personnel ■ General

Budgeted Expenses

Personnel

Non-Instructional Salaries	\$9,177,488
Instructional Salaries	\$18,282,318
Other Salaries & Wages	\$701,797
College Work Studies	\$147,816
Fringe Benefits	\$3,141,419
Total	\$31,450,838

General

Scholarships and Fellowships	\$1,825,282
General Expenses	\$4,948,962
Computer Service Charges	\$1,415,526
Instructional Equipment	\$553,000
Employee Travel	\$176,145
Mandatory Transfers	\$0
Total	\$8,918,915

Source: AC-SPC FY 2008 Budget